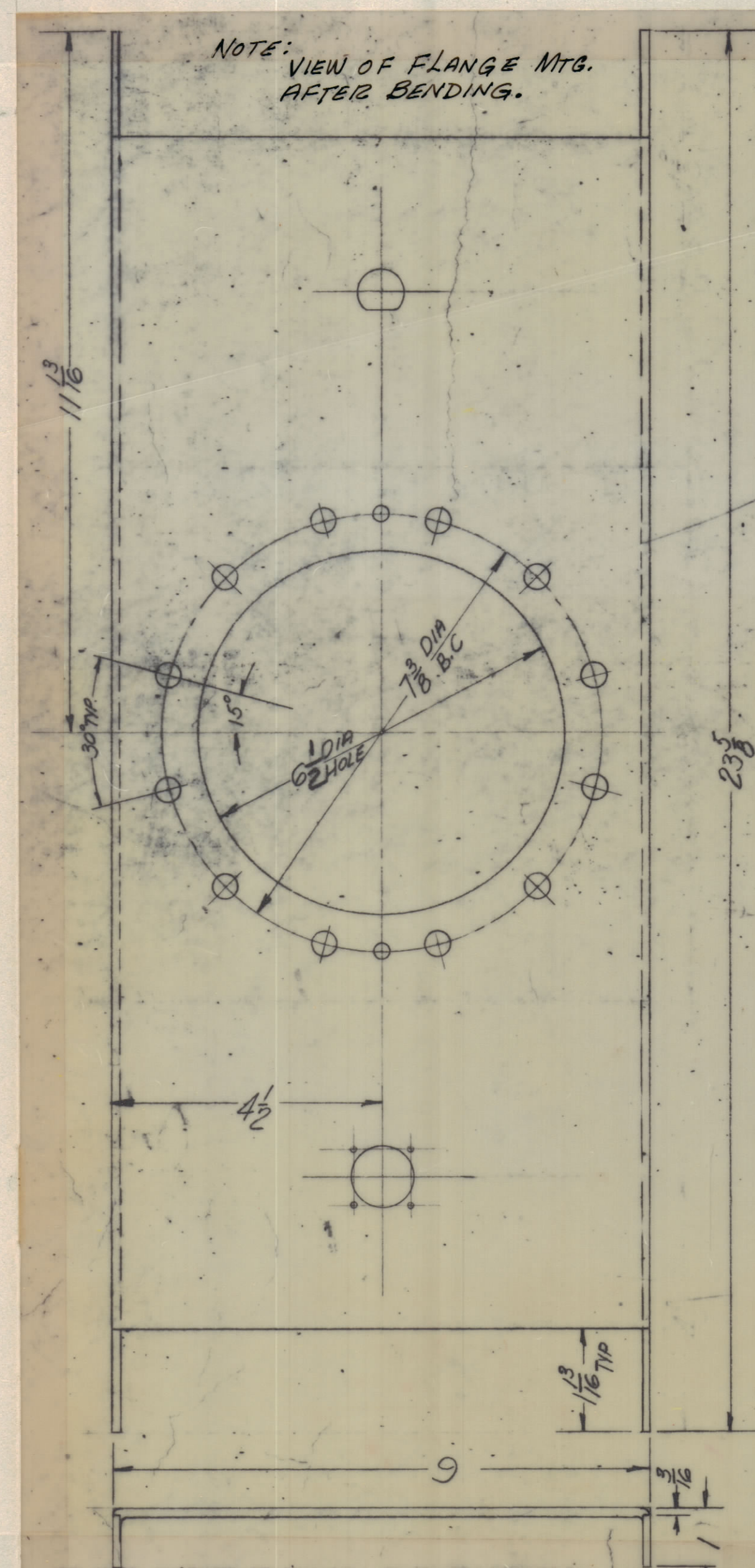
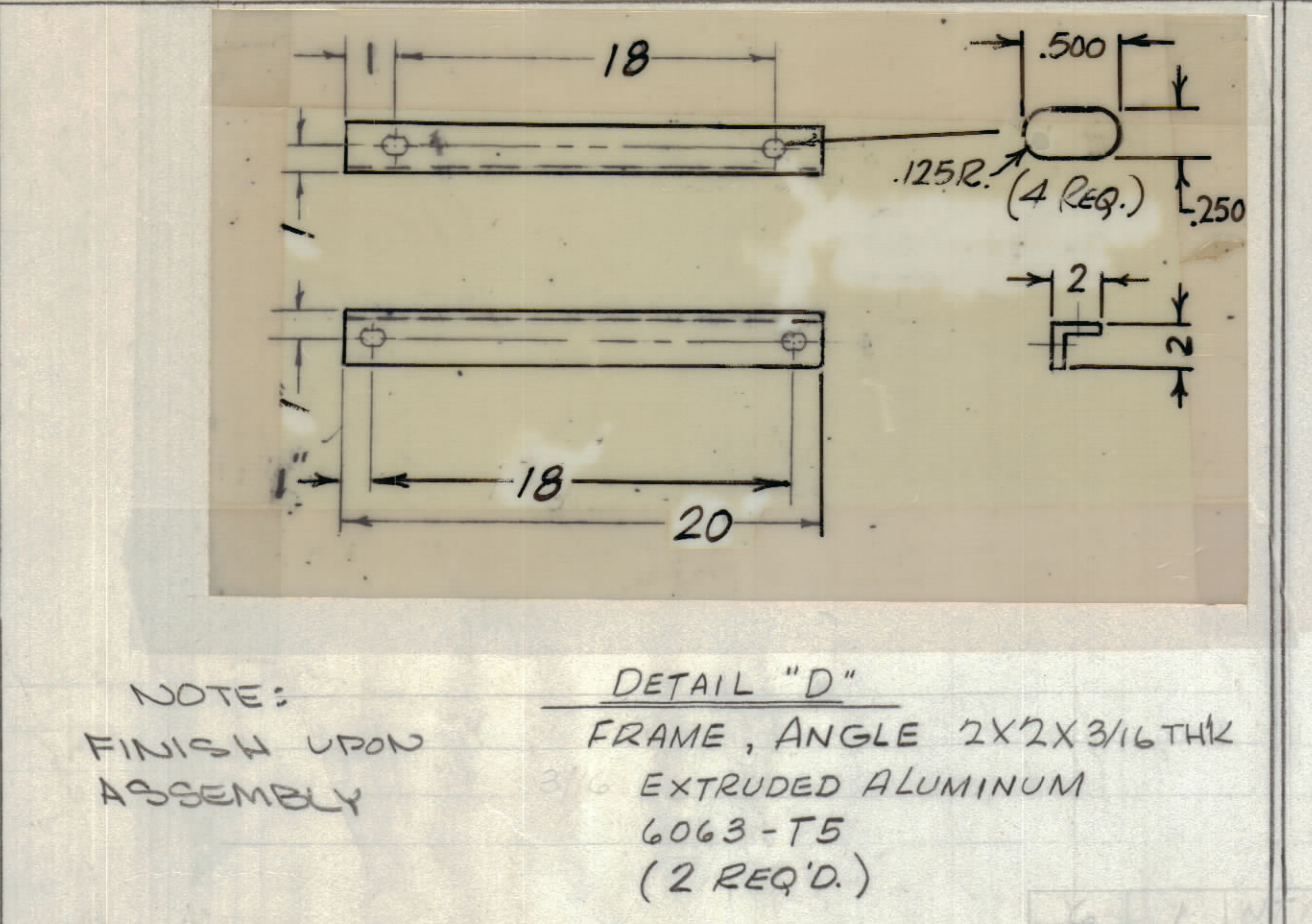
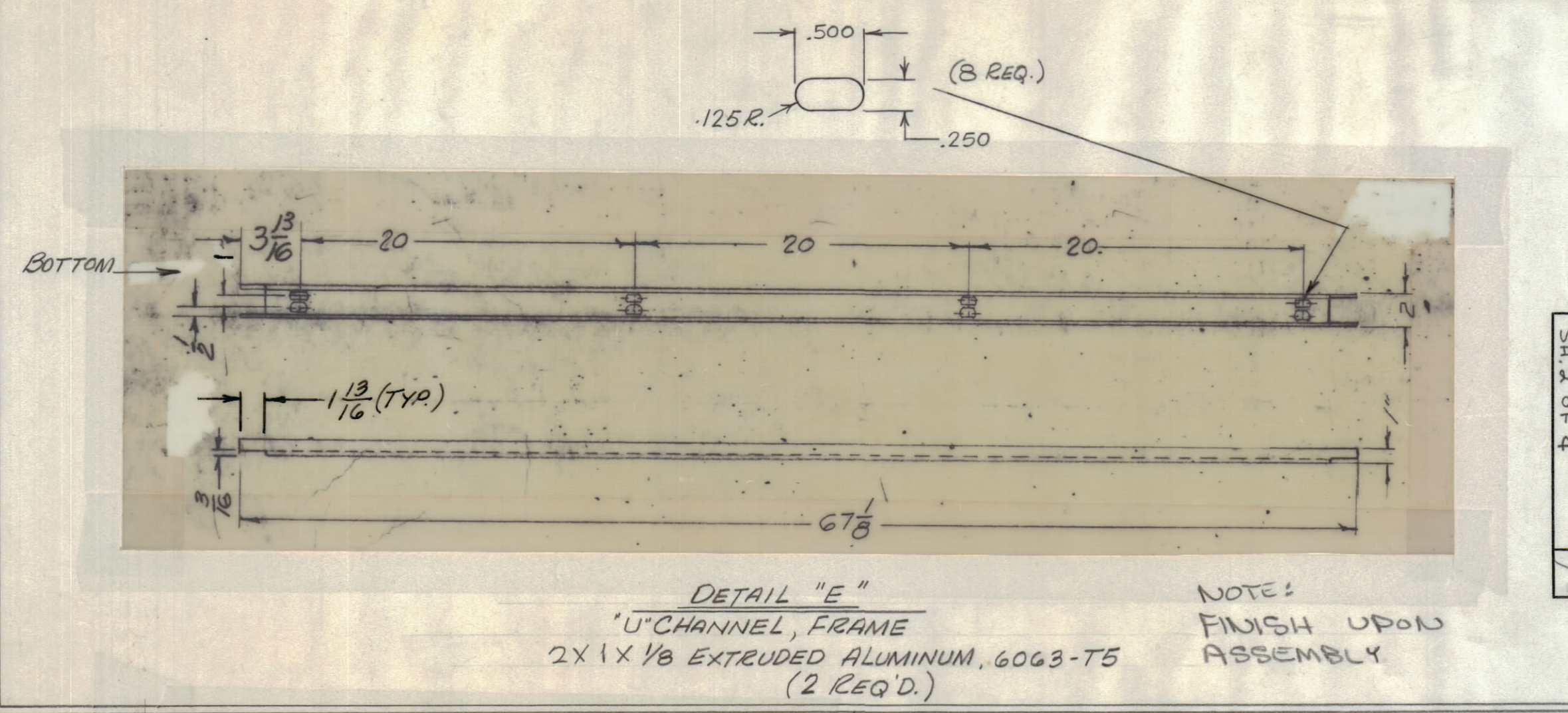
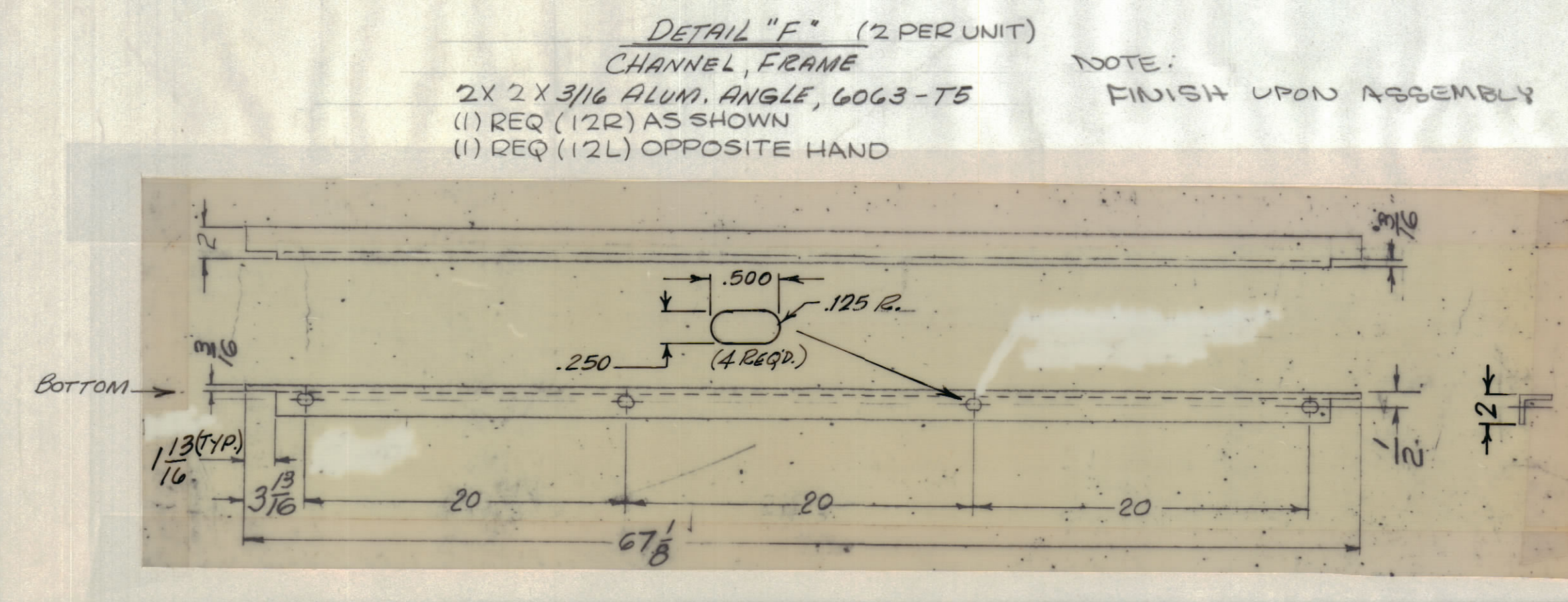
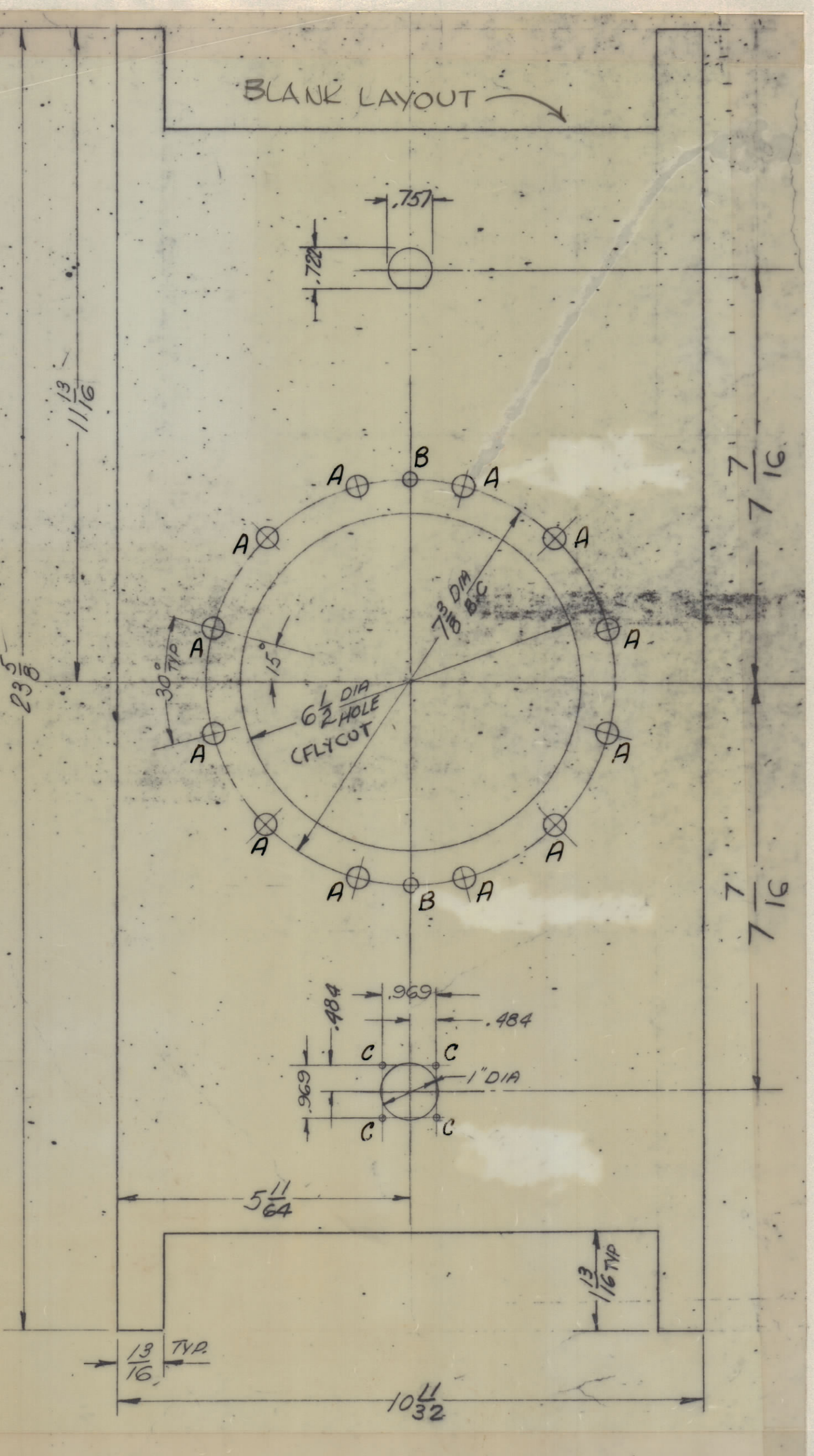


REVISIONS						
ZONE	SYM	DESCRIPTION	DATE	E.M.N. NO.	DRAFT	CHKD
	X2	SEE SHET 1	12-7-61	1		
	Ø	ORIGINAL RELEASE FOR PRODUCTION	4/1/65			

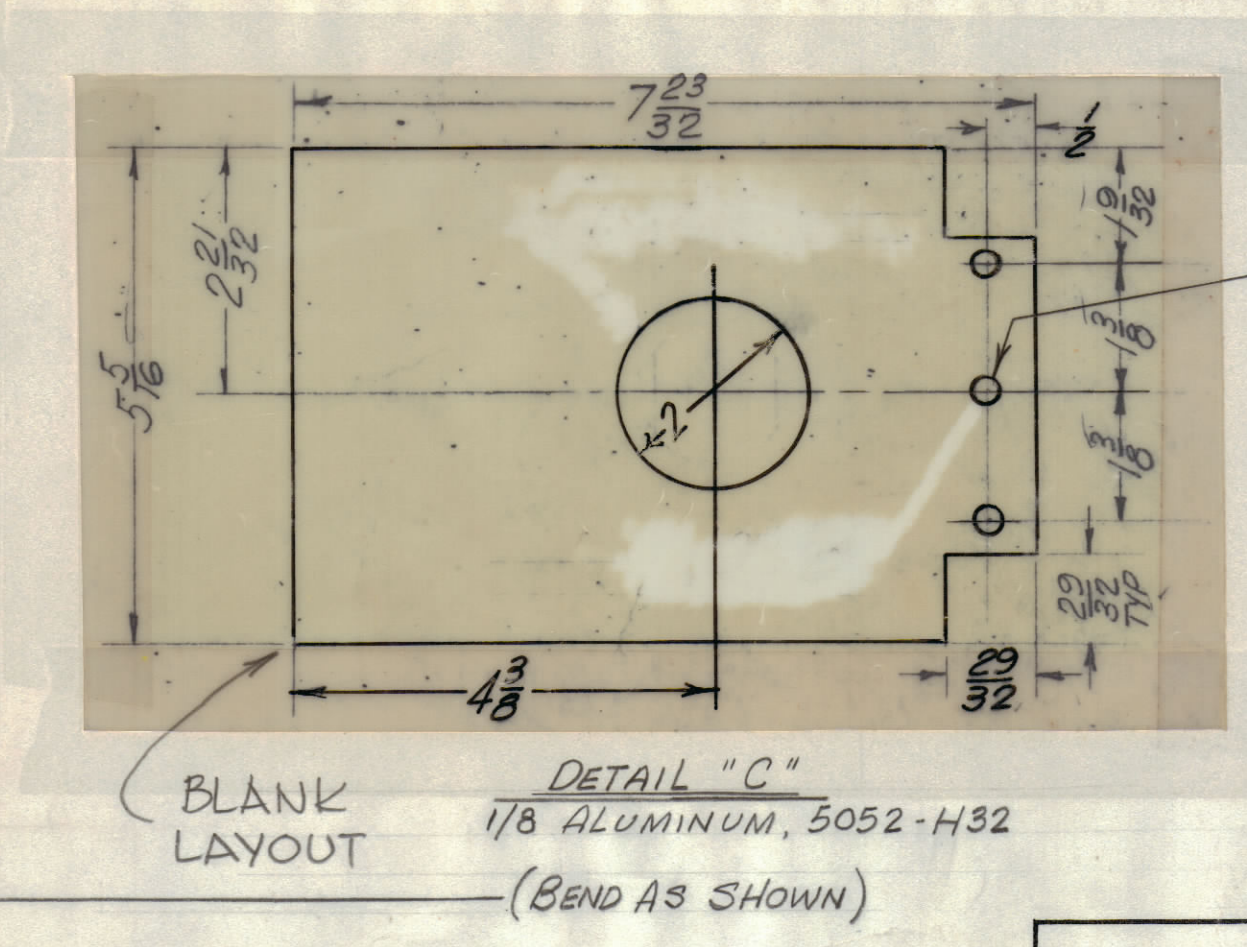
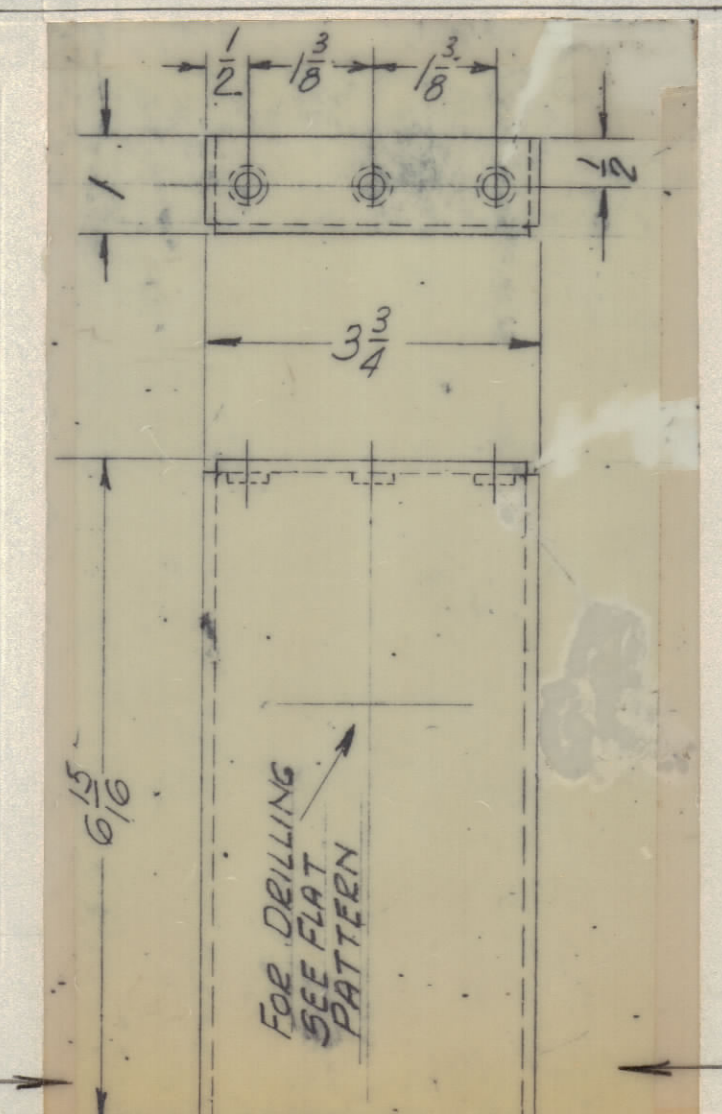
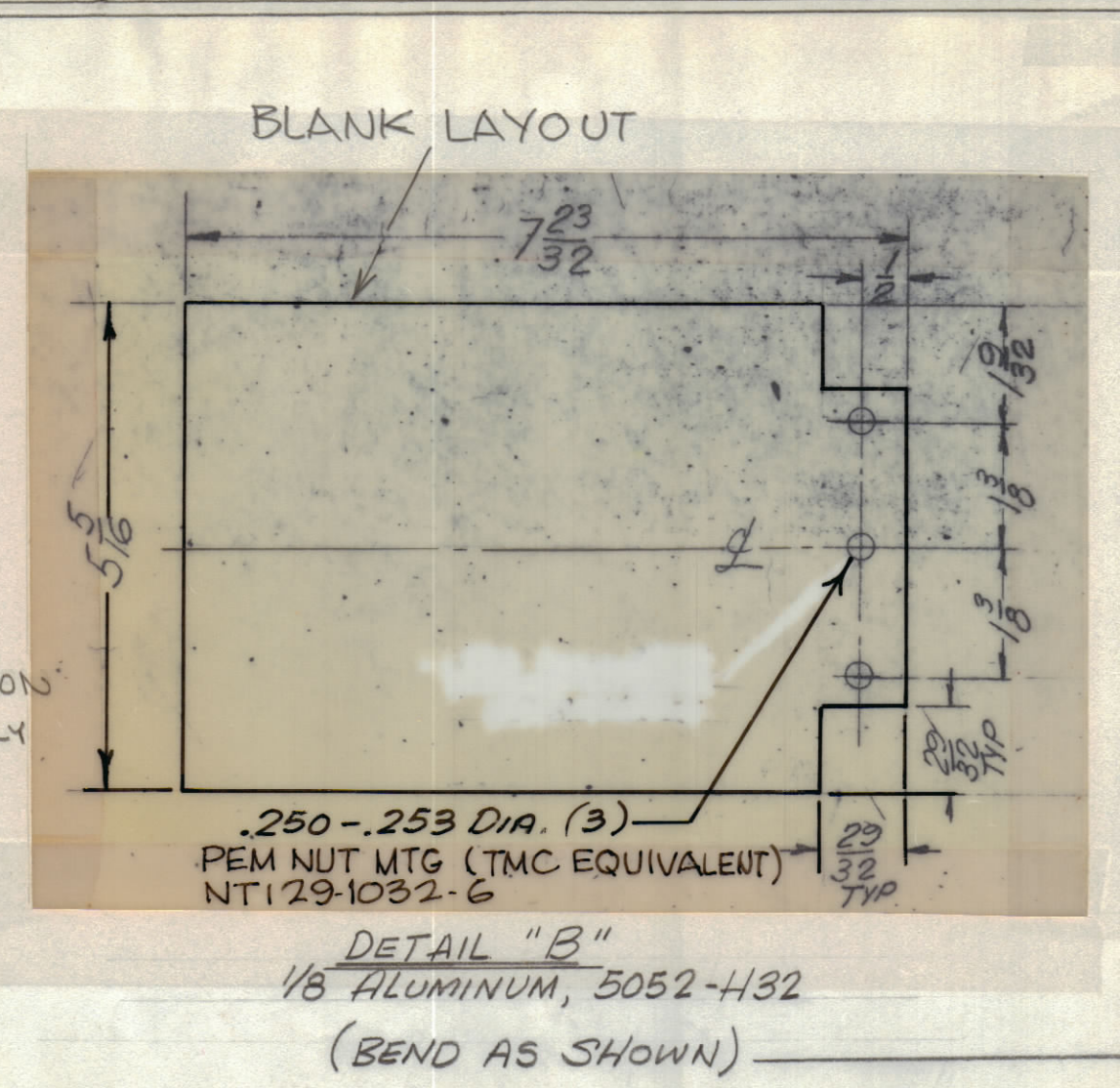


HOLE	DESCRIPTION	REQ.
A	7/16 DIA	12
B	9/32 DIA.	2
C	.120 DIA.	4

DETAIL "A"
 FLANGE MTG. RIGHT & LEFT
 3/16 ALUMINUM, 5052-H32
 NOTE:
 FINISH UPON
 ASSEMBLY



- UNLESS OTHERWISE SPECIFIED:
- * 1. USE MATERIAL THICKNESS FOR MAXIMUM RADIUS ON ALL BENDS
 - * 2. ALL ANGULAR BENDS 90 DEGREES
 - * 3. REMOVE ALL BURRS AND SHARP EDGES
 - * 4. MOUNT INSERTS AFTER FINISHING
 - * 5. TOLERANCES ON ALL DIMENSIONS TO BE NON-ACCUMULATIVE.
- * EXTRUDED PARTS DO NOT APPLY.



NOTE:
 FINISH UPON
 ASSEMBLY

NOTE:
 FINISH UPON
 ASSEMBLY

NOTE:
 FINISH UPON
 ASSEMBLY

DETAIL "B"
 1/8 ALUMINUM, 5052-H32
 (.BEND AS SHOWN)

DETAIL "C"
 1/8 ALUMINUM, 5052-H32
 (.BEND AS SHOWN)

NOTES

REQ'D.	ITEM	PART NUMBER	DESCRIPTION	SYMBOL
BUDETTI LIST OF MATERIAL				
MATERIAL		AS NOTED		
FINISH		SEE SHEET 1		
THE TECHNICAL MATERIEL CORP.		MAMARONECK, NEW YORK		
TITLE		MACHINING, FRAME		
TER-100K		TER-100K		
SCALE	TER-100K	MODEL USED ON	ASSY. NO.	
Do Not SCALE		5401-189		
UNLESS OTHERWISE SPECIFIED DIMENSIONS ARE IN INCHES AND INCLUDE CHEMICALLY APPLIED OR PLATED FINISHES		DRAWN	DATE	FINAL APPROVAL
DECIMALS ±.05		H. AUSTIN	10/5/65	
ANGLES ±.01		CHKD		
XXX ±.005				
TOLERANCES	± 1/64 ANGLES ± 0° 30'	ELECT. DES.	DATE	
THE CONTENTS OF THIS DRAWING ARE THE EXCLUSIVE PROPERTY OF THE TECHNICAL MATERIEL CORP. ITS UNAUTHORIZED USE OR REPRODUCTION IN WHOLE OR IN PART IS STRICTLY FORBIDDEN.		MECH. DES.	DATE	
SHEET 2 OF 4				REV. LTR.

MS3140
 10 of 4