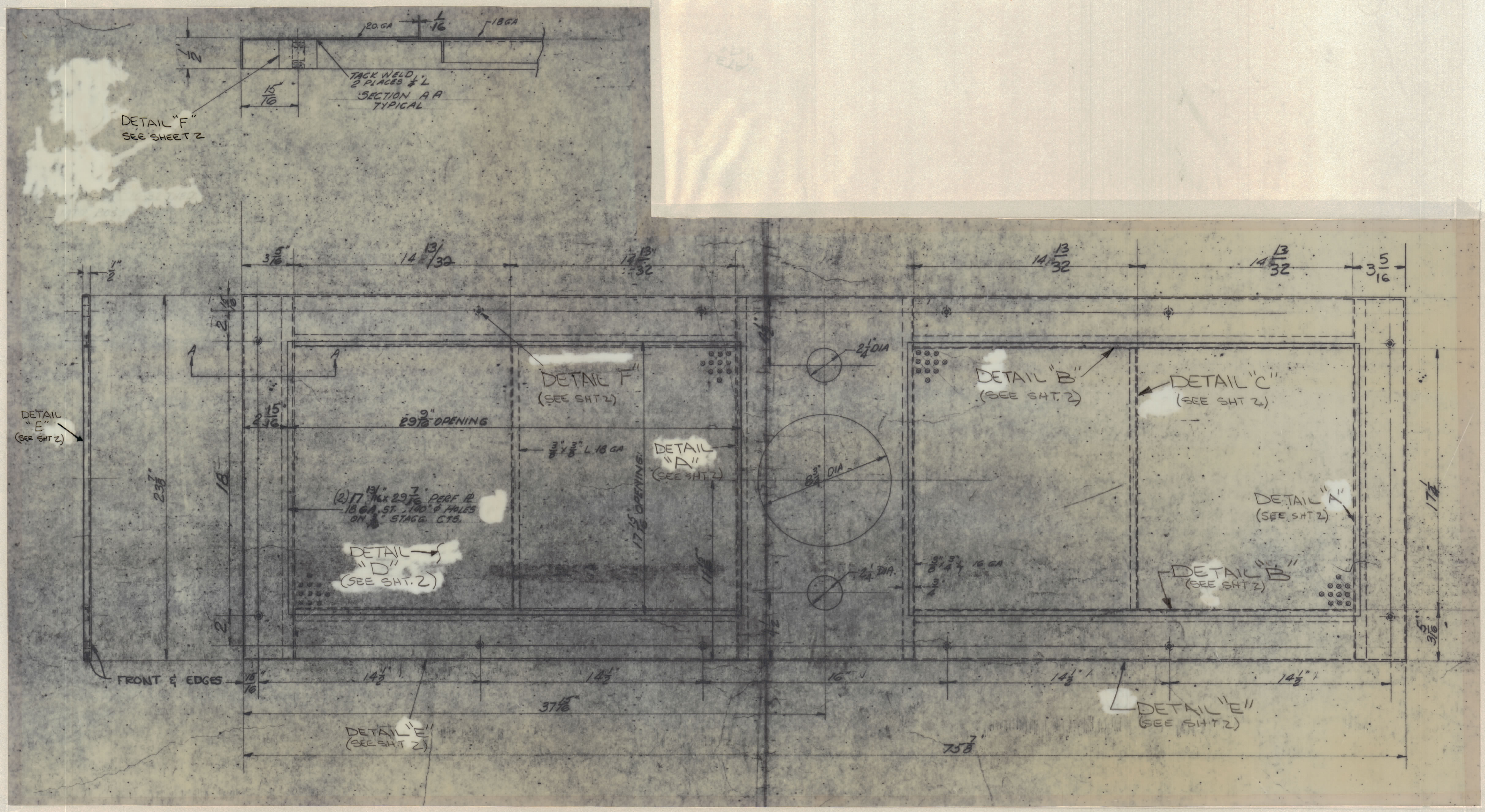


ZONE		SYM		REVISIONS			DATE	E.M.N. NO.	DRAFT	CHKD	APPD
				ORIGINAL RELEASE FOR PRODUCTION			12/1/65				



- UNLESS OTHERWISE SPECIFIED
- CONSTRUCTION STEEL
 - MOUNT ALL INSERTS AFTER FINISHING.
 - ALL WELD JOINTS TO BE VEE'D OUT PRIOR TO WELDING.
 - WELDING TO BE PER MIL-T-5021C, TUNGSTEN INERT GAS PROCESS.
 - ALL JOINTS SHOULD BE WELDED INSIDE AND OUTSIDE.
 - ALL OUTSIDE WELDS TO BE GROUND FLUSH.
 - OUTSIDE SURFACES TO BE REASONABLY FREE OF SCRATCHES AND TOOL MARKS AND HAVE A SURFACE ROUGHNESS NOT TO EXCEED $\sqrt{25}$
- NOTE: ALL DIMENSIONS TO THREAD ROD MUST BE HELD.
- FINISH NOTE:
- COPPER PLATE AND CLEAR IRIDITE ALL OVER.
 - S114 AND BLUE TEXTURED FRONT AND EDGES ONLY.

5520

MS3143

NOTES

AS NOTED	JER-400 R	ABS'Y. NO.
QTY/UNIT	MODEL USED ON	
SCALE	CODE	5401-189
DO NOT SCALE		

REQ'D.	ITEM	PART NUMBER	DESCRIPTION	SYMBOL
BUDETTI LIST OF MATERIAL				
MATERIAL		THE TECHNICAL MATERIEL CORP. MAMARONECK, NEW YORK		
FINISH		TOP PANEL		
DRAWN		EMISA	DATE	FINAL APPROVAL
CHECKED		JCB	DATE	
ELECT. DES.			DATE	
MECH. DES.			DATE	
TOLERANCES		DECIMALS: .XX ± .05, .XXX ± .005; FRACTIONS: ± 1/64; ANGLES: ± 0° 30'		
SHEET		MS3143		
REV. LTR.		002		