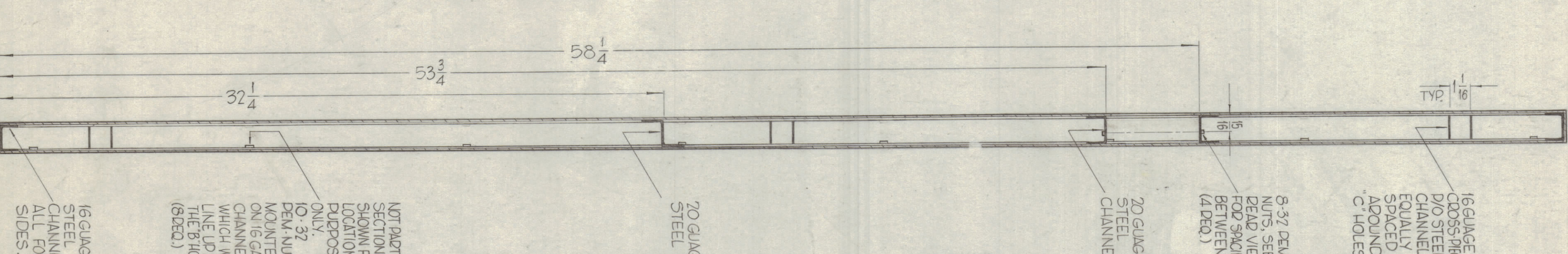
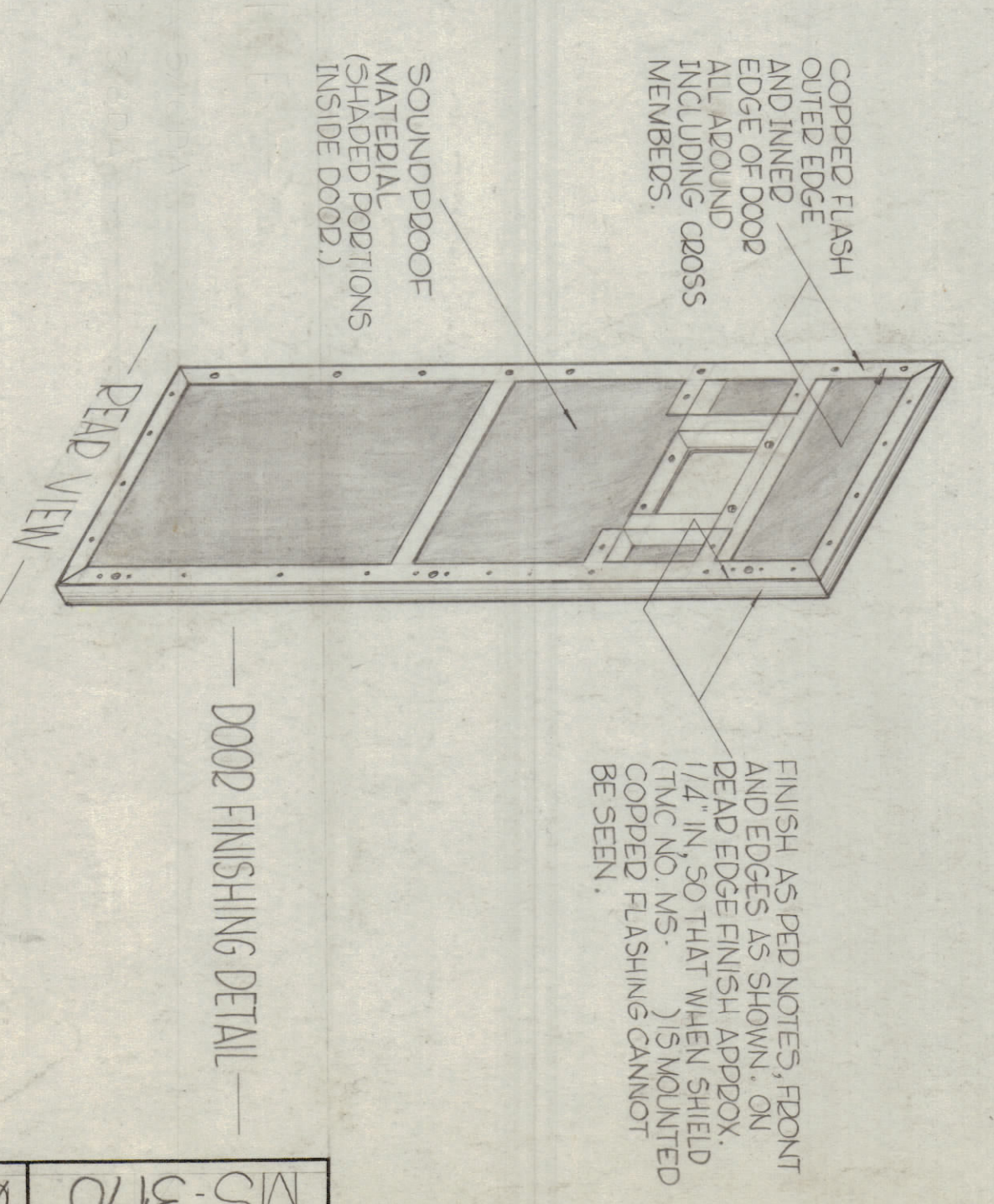


SECTION



REVISIONS

ZONE	REV	DESCRIPTION	DATE	BY	CHKD	APPD
	1	ORIGINAL RELEASE FOR PRODUCTION	6/24/48	GE		



- HOLES —
- A - DRILL ϕ TAP 4-40 THREADS — 30 DEG.
 - B - 5/16 DIA. (DEAD LIP ONLY) — 8 DEG.
 - C - 3/8 DIA. (THRU TO FRONT) — 6 DEG.

MS-3170-1, AS SHOWN
MS-3170-2, OPPOSITE HAND

LIST OF MATERIAL

QTY	ITEM	PART NUMBER	DESCRIPTION	SYMBOL
	E. BUDETTI		THE TECHNICAL MATERIAL CORP.	
	20 GAUGE STEEL		MAMARONECK, NEW YORK	

UNLESS OTHERWISE SPECIFIED DIMENSIONS ARE IN INCHES AND INCLUDE CHEMICALLY APPLIED OR PLATED FINISHES

DECIMALS	FRACTIONS	ANGLES	TOLERANCES	FINISH	DATE
XXX ± .005	± 1/32	± 1/16	± .015	SEE NOTES	6/24/48

QTY/UNIT	MODEL USED ON	CODE	ASBY. NO.
2	GPT. 2002		AV. 393

FINISHING NOTES — COPPED FLASH. S114 ZINC CHROMATE PRIMED. S720 DOAF BLUE GRAY ENAMEL.

MACHINING NOTES — 1- GRIND SMOOTH, ALL WELD POINTS ON DEAD. 2- HOLES MUST BE DRILLED. 3- DOOR MUST BE FREE OF ALL MACHINING MARKS, COUGES & SCRATCHES. IF NECESSARY, SAND WITH NO. 120 GRIT SANDPAPER.