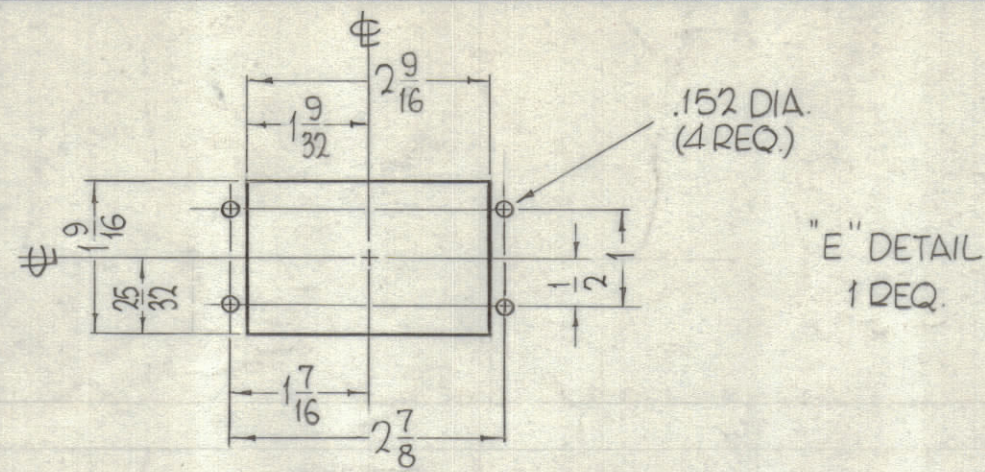
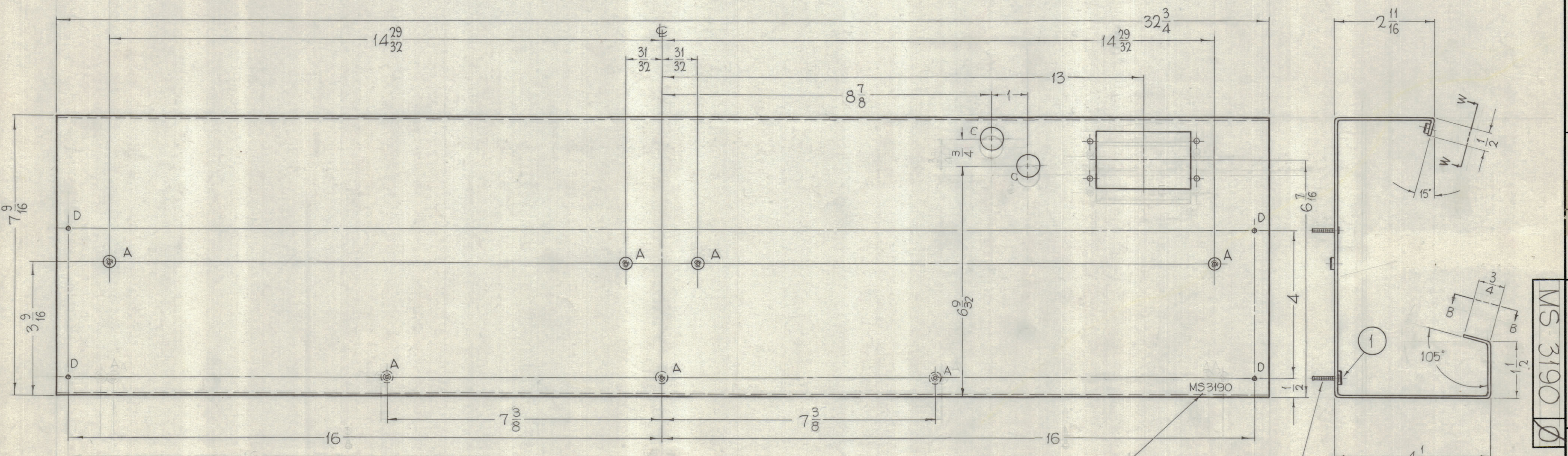
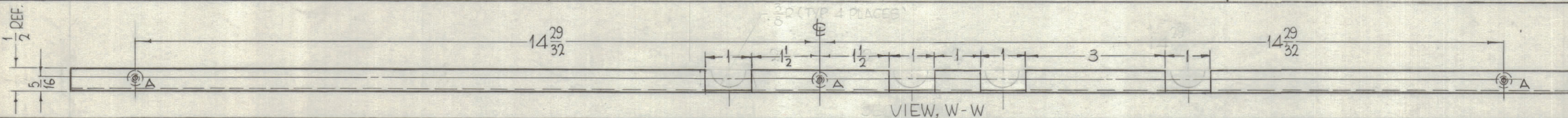


- HOLES REQ.
- A- .221 MIN., .224 MAX. DIA'S. 10
- B- DRILL & C'SK FOR 6-32 FHS. 4
- C- 5/8 DIA. 2
- D- 15/64 DIA. 4



REVISIONS					
ZONE	SYM	DESCRIPTION	DATE	E.M.N. NO.	APPD
X5		④ NOTCHES ADDED TO TOP LIP	10-11-63		
0		ORIGINAL RELEASE FOR PROD	5/11/64		



METAL STAMP TMC PART NO. 1/8 HIGH GOTHIC WITH LATEST REVISION LETTER.

BRAZE 10-32 X 5/8 LONG BHS TO BOX AS SHOWN (4 REQ) MOUNT IN "D" HOLES



UNLESS OTHERWISE SPECIFIED:

- USE MATERIAL THICKNESS FOR MAXIMUM RADIUS ON ALL BENDS.
- ALL ANGULAR BENDS 90°.
- REMOVE ALL BURRS AND SHARP EDGES.
- MOUNT INSERTS AFTER FINISHING.

FINISH NOTES:

- S404 - IRIDITE 14-2 AL-COAT.
- S114 - ZINC CHROMATE PRIMER
- S115 - SMOOTH GRAY ENAMEL } EXCEPT REAR

REF-TMC DWG. LD-1216.

1	GPT-200K	AM-120
QTY./UNIT	MODEL USED ON	ASS'Y. NO.
SCALE 1/2" = 1"	CODE A	1 1/2" = 1"

10	1	NT-129-832-4	NUT, ROUND, SWAGE TYPE	
REQ'D.	ITEM	PART NUMBER	DESCRIPTION	SYMBOL
F. BUDETTI LIST OF MATERIAL				
MATERIAL .064 THICK ALUMINUM, 5052, H-32			THE TECHNICAL MATERIEL CORP. MAMARONECK, NEW YORK	
FINISH SEE FINISH NOTES			TITLE METER BOX, POWER SUPPLY "B"	
DRAWN John C. Biele		DATE 7-1-63	FINAL APPROVAL	
CHECKED aa		DATE	DATE	
ELECT. DES. JB		DATE 4/9/64	MS 3190	
MECH. DES. ne		DATE 4/1/64	SHEET	
DECIMALS .X ± .05 .XX ± .01 .XXX ± .005		FRACTIONS ± 1/64 ANGLES ± 0° 30'		REV. LTR.