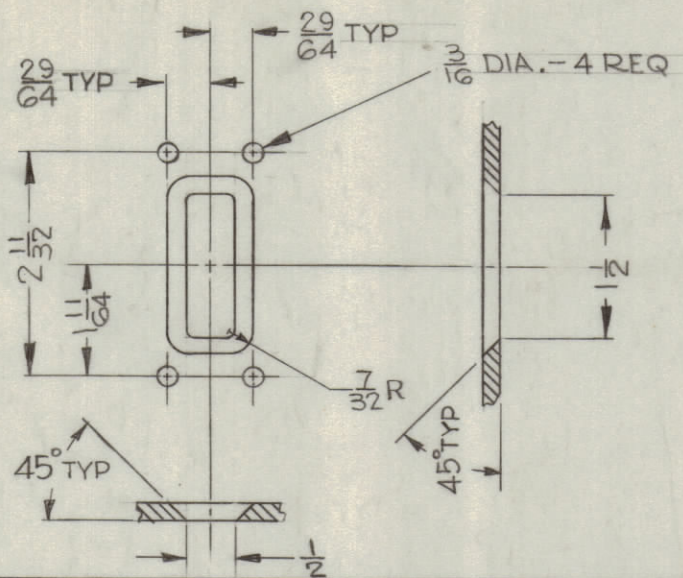
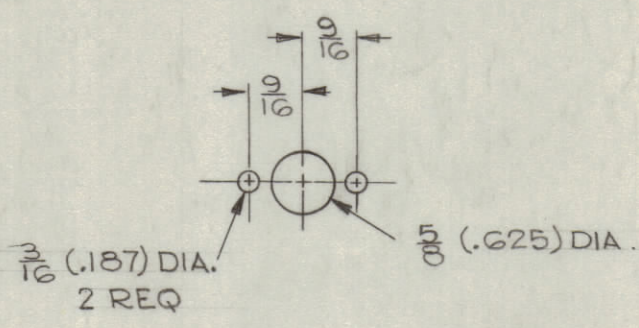


DETAIL "C"

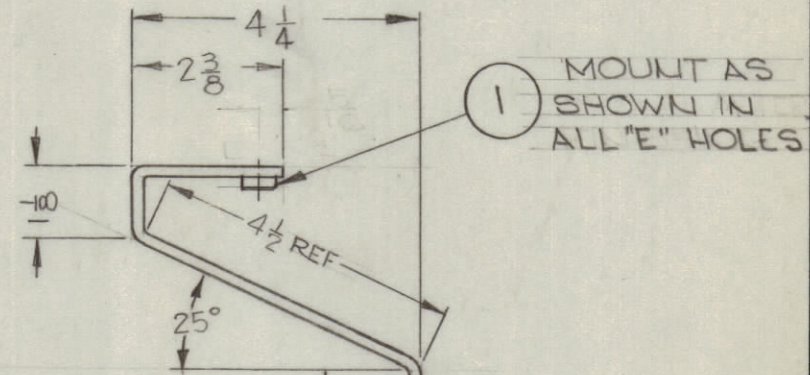
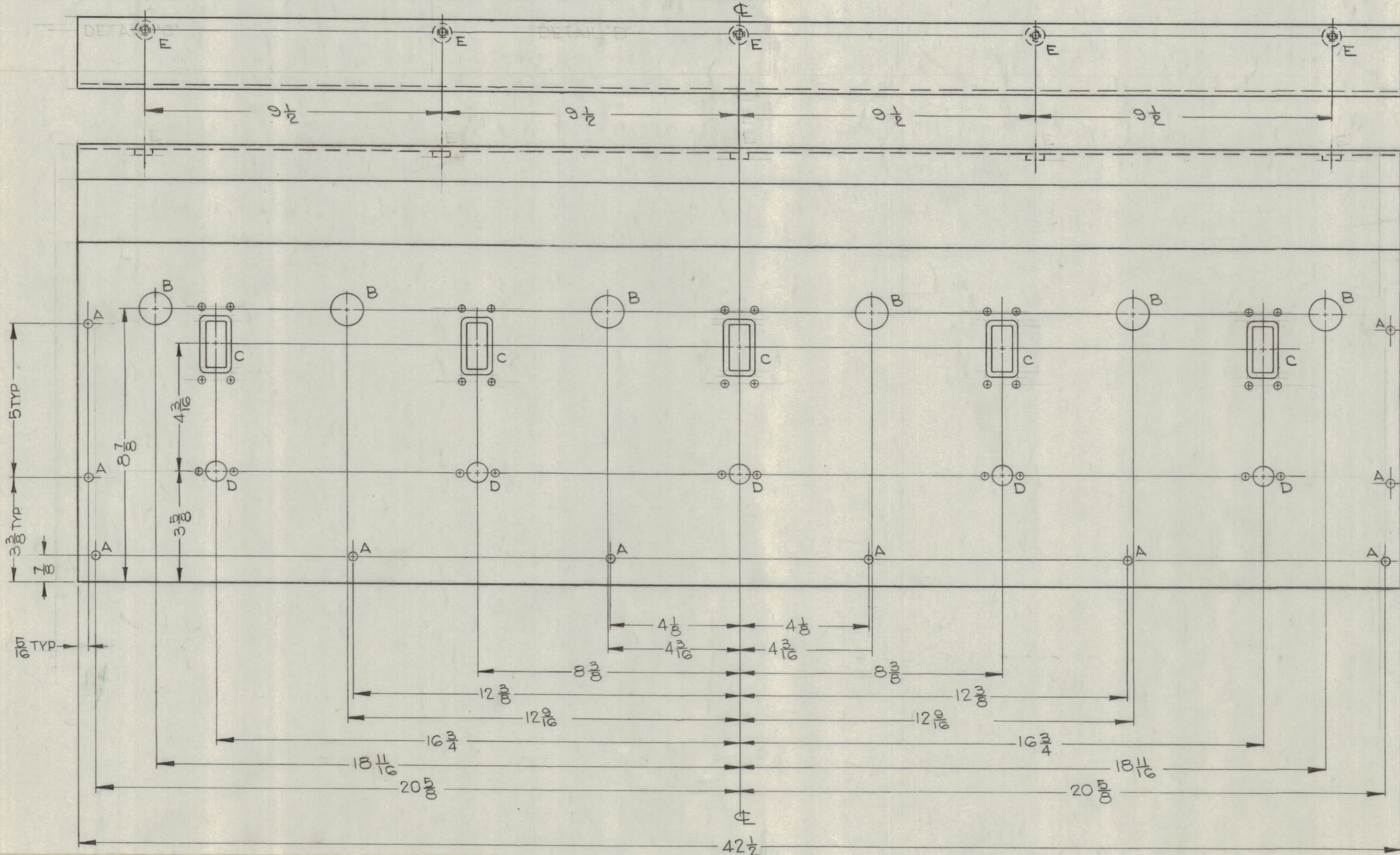


DETAIL "D"



LEGEND		
HOLE	DESCRIPTION	REQ
A	7/32 DIA.	10
B	1.0 DIA	6
C	SEE DETAIL	5
D	SEE DETAIL	5
E	.253-.250 DIA	5

REVISIONS						
ZONE	SYM	DESCRIPTION	DATE	E.M.N. NO.	DRAFT	CHKD
	Ø	ORIGINAL RELEASE FOR PRODUCTION	5-18-64		SEE	APPD



METAL STAMP TMC PART No. (MS-3193 )  
 1/8 HIGH GOTHIC ON REAR OF PANEL  
 W/LATEST REV. LETTER.

MS-3193

**MACHINING:**

1. MILL ALL EDGES.
2. HOLES MUST BE DRILLED, UNLESS OTHERWISE SPECIFIED.
3. LATERAL BOW OF PANEL MUST BE KEPT TO .031 TOLERANCE.
4. PANEL MUST BE FREE OF ALL MACHINING MARKS, GOUGES AND SCRATCHES. IF NECESSARY, SAND FRONT OF PANEL WITH NO. 120 GRIT SANDPAPER.

**UNLESS OTHERWISE SPECIFIED:**

1. USE MATERIAL THICKNESS FOR MAXIMUM RADIUS ON ALL BENDS.
2. ALL ANGULAR BENDS 90°.
3. REMOVE ALL BURRS AND SHARP EDGES.
4. MOUNT INSERTS AFTER FINISHING.

**FINISH NOTES:**

1. S404 - IRIDITE 14-2 AL-COAT.
2. S114 - ZINC CHROMATE PRIMER) FRONT AND
3. S115 - SMOOTH GRAY ENAMEL ) EDGES ONLY

**NOTES**

Q'TY./UNIT	MODEL USED ON	ASS'Y. NO.
SCALE	CODE	
1:3		

THE CONTENTS OF THIS DRAWING ARE THE EXCLUSIVE PROPERTY OF THE TECHNICAL MATERIEL CORP. ITS UNAUTHORIZED USE OR REPRODUCTION IN WHOLE OR IN PART IS STRICTLY FORBIDDEN.

REF: LD-1204, SHEETS 1 & 2, PX-

REQ'D.	ITEM	PART NUMBER	DESCRIPTION	SYMBOL
5	1	NT-129-1032-G	NUT, ROUND, SWAGE TYPE	

**F. BUDETTI**

LIST OF MATERIAL	
MATERIAL	THE TECHNICAL MATERIEL CORP. MAMARONECK, NEW YORK
ALUMINUM, 5052-H32 1/8 THICK	
FINISH	TITLE
SEE NOTES	PANEL, FRONT, P.A.

UNLESS OTHERWISE SPECIFIED DIMENSIONS ARE IN INCHES AND INCLUDE CHEMICALLY APPLIED OR PLATED FINISHES	DRAWN CHECKED	DATE DATE	FINAL APPROVAL DATE
DECIMALS .X ± .05 .XX ± .01 .XXX ± .005	TOLERANCES	FRACTIONS ± 1/64 ANGLES ± 0° 30'	ELECT. DES. MECH. DES.
		DATE DATE	MS-3193 SHEET