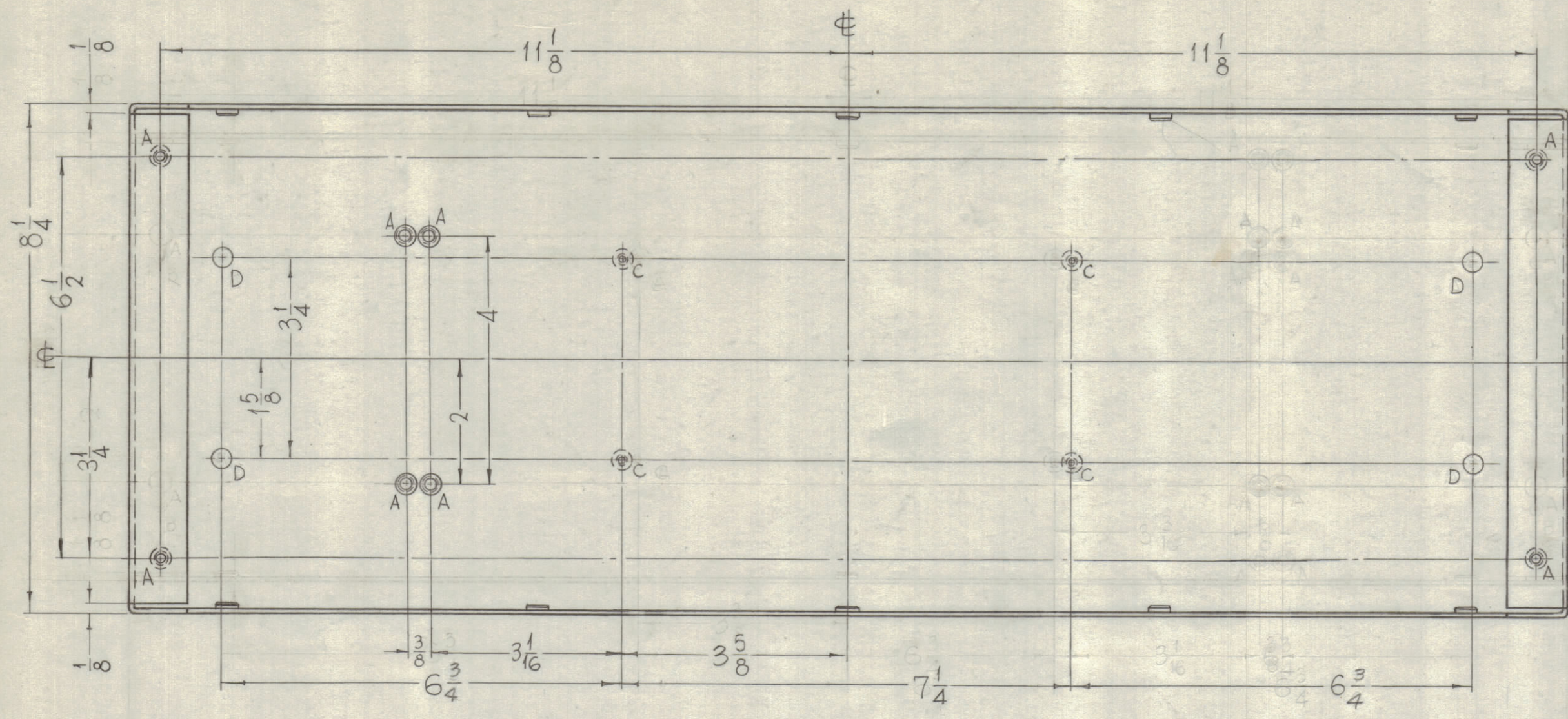
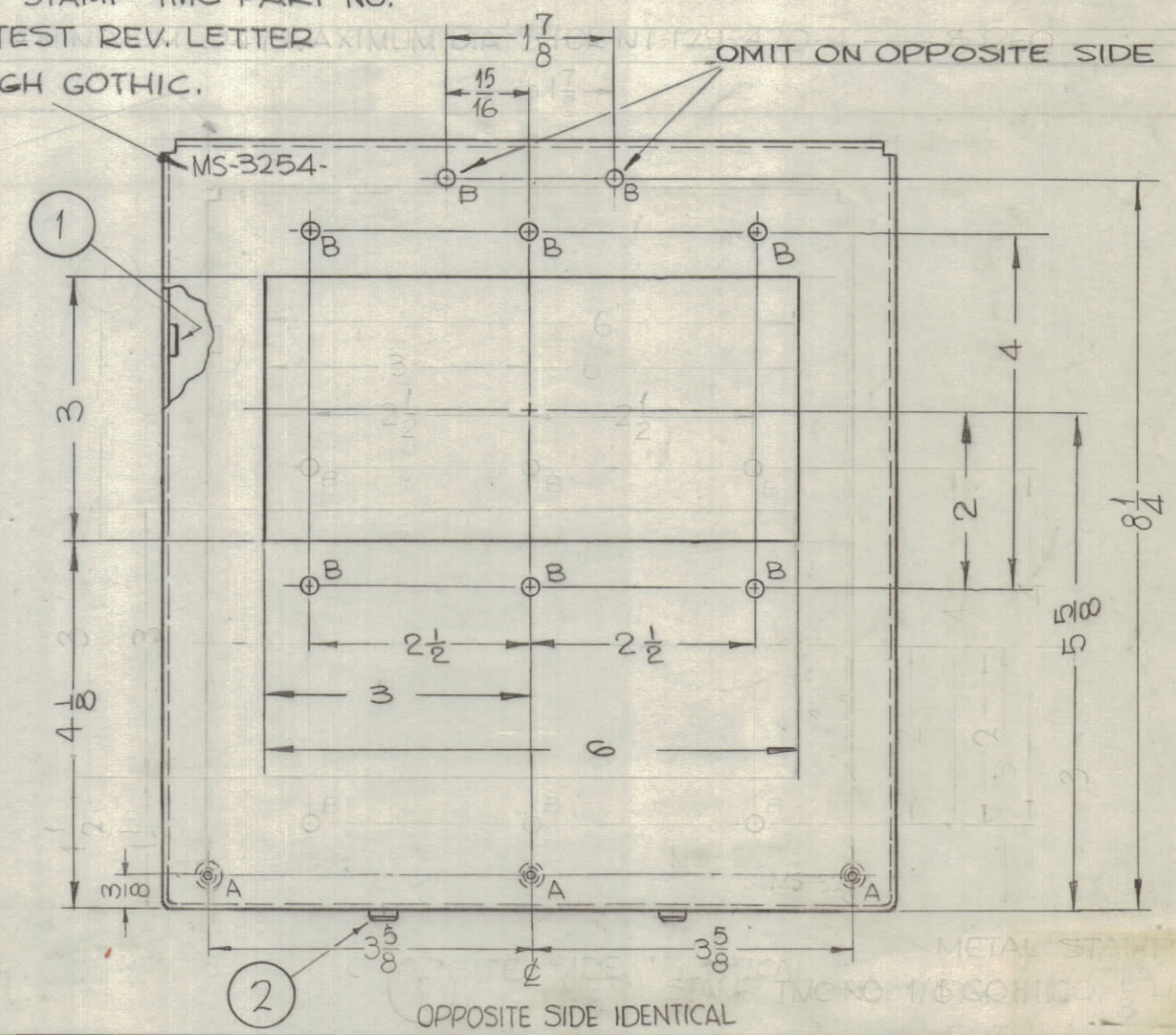
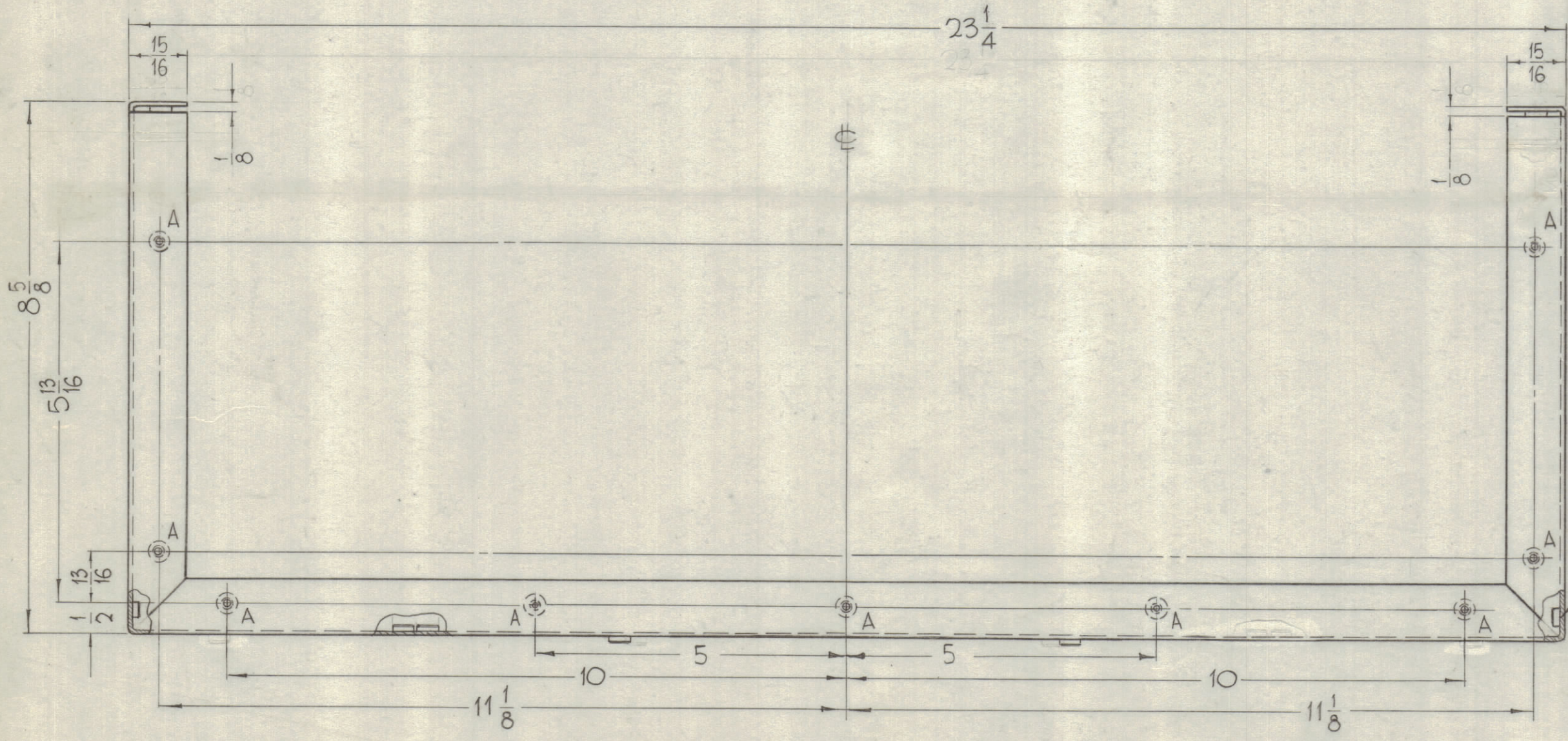


REVISIONS							
ZONE	SYM	DESCRIPTION	DATE	E.M.N. NO.	DRAFT	CHKD	APPD
		6 1/2 DIM WAS 6 3/4 (2 PLACES) 3 3/8 WAS 3 7/8, 7 1/8 WAS 6 3/4, 3 7/8 WAS 3 3/8	10-24-63				
		DIM. FOR 'A' HOLES 6 1/2 WAS 4	2-4-64				
		2 B HOLES ADDED	4-7-64				
		D HOLES WERE NT-129-2520-4	4-15-64				
		ORIGINAL RELEASE FOR PRODUCTION	5-6-64				
		6 3/4 WAS 6 1/2	7-8-65	14424	SRG		



HOLES:

- A- .221-.224 DIA. MAX. DIA. _____ 32 REQ.
- B- 13/64 DIA. _____ 14 REQ.
- C- .344-.347 DIA. _____ 4 REQ.
- D- 9/32 DIA. _____ 4 REQ.



UNLESS OTHERWISE SPECIFIED
 1- USE MATERIAL THICKNESS FOR MAXIMUM RADIUS ON ALL BENDS.
 2- MOUNT INSERTS AFTER FINISHING.
 3- ALL BENDS 90°.

NOTES

REF. TMC DWG. LD-1254-

REQ'D.	ITEM	PART NUMBER	DESCRIPTION	SYMBOL
4	2	NT-129-420-4	NUT, ROUND, SWAGE TYPE	
32	1	NT-129-832-4	NUT, ROUND, SWAGE TYPE	

F. BUDETTI LIST OF MATERIAL			
MATERIAL .081 THICK, ALUMINUM, 5052-H32		THE TECHNICAL MATERIEL CORP. MAMARONECK, NEW YORK	
FINISH S404-IRIDITE 14-2 AL-COAT		TITLE CHASSIS, DECOUPLER	
DRAWN John C. Biele	DATE 4-19-63	FINAL APPROVAL	DATE
CHECKED	DATE		
ELECT. DES.	DATE	MS-3254 A	
MECH. DES.	DATE	REV. LTR.	
SHEET		REV. LTR.	

QTY./UNIT	MODEL USED ON	ASSY. NO.
1	GPT-200K (AX-395)	A-3258
SCALE 1/2" = 1"	CODE A	

THE CONTENTS OF THIS DRAWING ARE THE EXCLUSIVE PROPERTY OF THE TECHNICAL MATERIEL CORP. ITS UNAUTHORIZED USE OR REPRODUCTION IN WHOLE OR IN PART IS STRICTLY FORBIDDEN.