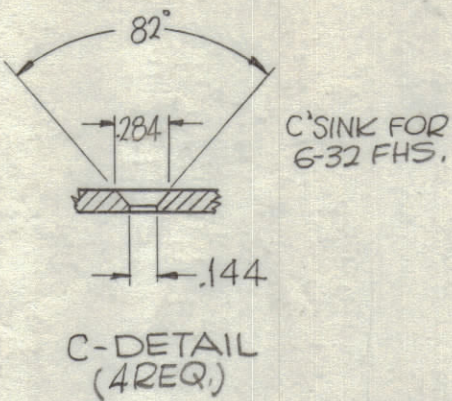
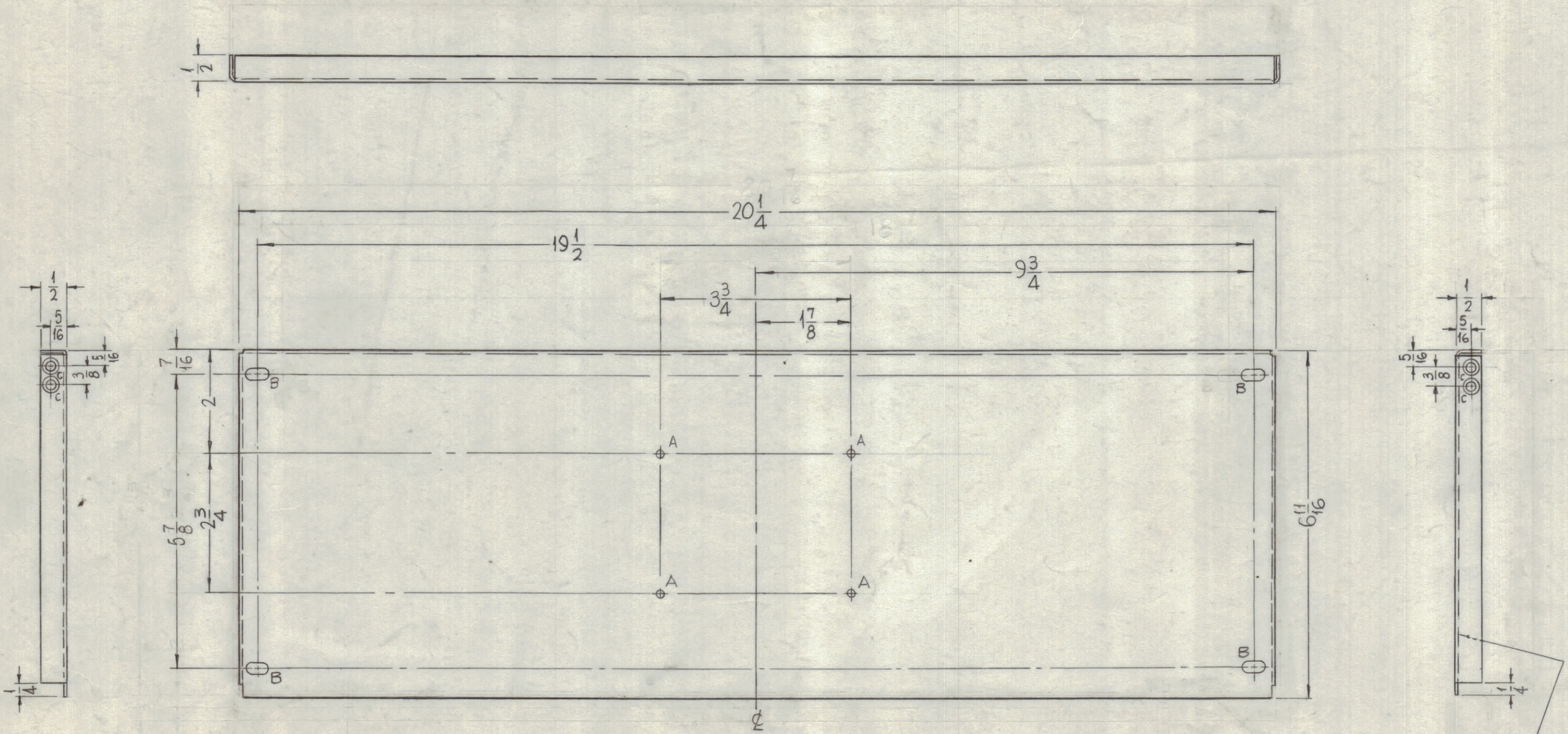


HOLE	DESCRIPTION	REQ'D
A	.071 DIA	4
B	13/64 X 13/32 SLOT	2
C	SEE DETAIL	



REVISIONS						
ZONE	SYM	DESCRIPTION	DATE	E.M.N. NO.	DRAFT	CHKD
	X2	REDRAWN + REVISED				
	X3	REVISED	3-8-64			
	X4	7/16 WAS 1/2, 5/8 WAS 5/4, 6 11/16 WAS 6 3/16	4-9-64			
	O	ORIGINAL RELEASE FOR PRODUCTION	4-23-64			
C3	A	METAL STAMP NO. MS3263 WAS MS3663	7-18-64	11954		



METAL STAMP TMC PART NO. MS-3263 - WITH LATEST REV. LETTER 1/8 HIGH GOTHIC (INSIDE)

UNLESS OTHERWISE SPECIFIED:

1. USE MATERIAL THICKNESS FOR MAXIMUM RADIUS ON ALL BENDS.
2. ALL ANGULAR BENDS 90°.
3. REMOVE ALL BURRS AND SHARP EDGES.

FINISH NOTES:

1. S404 - IRIDITE 14-2 AL-COAT.
2. S114 - ZINC CHROMATE PRIMER) FRONT AND
3. S115 - SMOOTH GRAY ENAMEL ) EDGES ONLY  
OR PRIME & PAINT TO CUST. SPEC.

MS-3263 A

Q'TY./UNIT	MODEL USED ON	ASS'Y. NO.
1	GPT-200K	AR138
1	GPT 200K	AR137
SCALE	CODE	
1/2	A	2A-2769

REQ'D.	ITEM	PART NUMBER	DESCRIPTION	SYMBOL
F. BUDETTI LIST OF MATERIAL				
MATERIAL			THE TECHNICAL MATERIEL CORP.	
1/16 TH'K ALUMINUM			MAMARONECK, NEW YORK	
5052 - H32			TITLE	
FINISH			COVER, PLATE, RELAY PANEL.	
SEE NOTES				
UNLESS OTHERWISE SPECIFIED			DRAWN	
DIMENSIONS ARE IN INCHES AND INCLUDE			A TURS1	
CHEMICALLY APPLIED OR PLATED FINISHES			DATE	
			Kee	
DECIMALS			ELECT. DES.	
.X ± .05			4B 2B	
.XX ± .01			DATE	
.XXX ± .005			4/12/64	
FRACTIONS			MECH. DES.	
± 1/64			Kee	
ANGLES			DATE	
± 0° 30'			4/12/64	
TOLERANCES			SHEET	
			MS-3263	
			REV. LTR.	
			A	

NOTES

THE CONTENTS OF THIS DRAWING ARE THE EXCLUSIVE PROPERTY OF THE TECHNICAL MATERIEL CORP. ITS UNAUTHORIZED USE OR REPRODUCTION IN WHOLE OR IN PART IS STRICTLY FORBIDDEN.