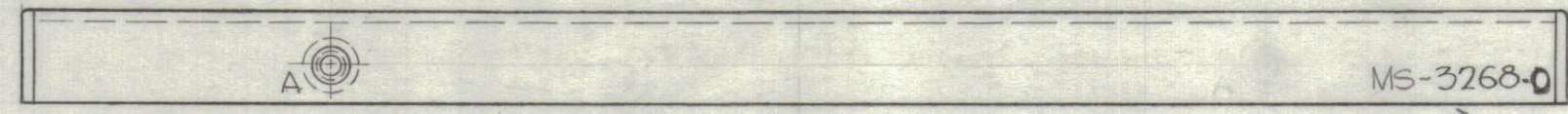


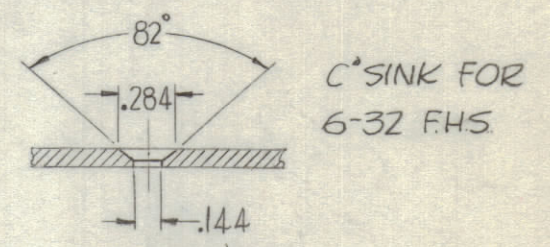
REVISIONS							
ZONE	SYM	DESCRIPTION	DATE	E.M.N. NO.	DRAFT	CHKD	APPD
	0	ORIGINAL RELEASE FOR PRODUCTION	3-2-64		A.M.		



MS-3268-0

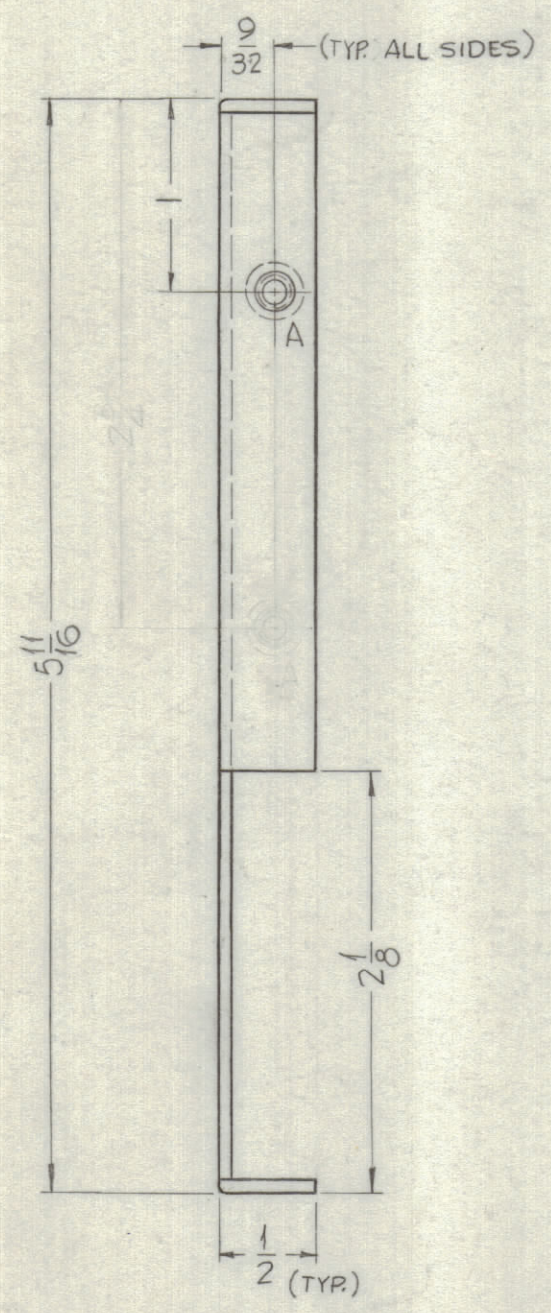
METAL STAMP TMC PART NO.  $\frac{1}{8}$  GOTHIC AS SHOWN.

HOLES:  
 A ~ .191-.194 DIA. — 9 REQ.  
 B ~ SEE DETAIL

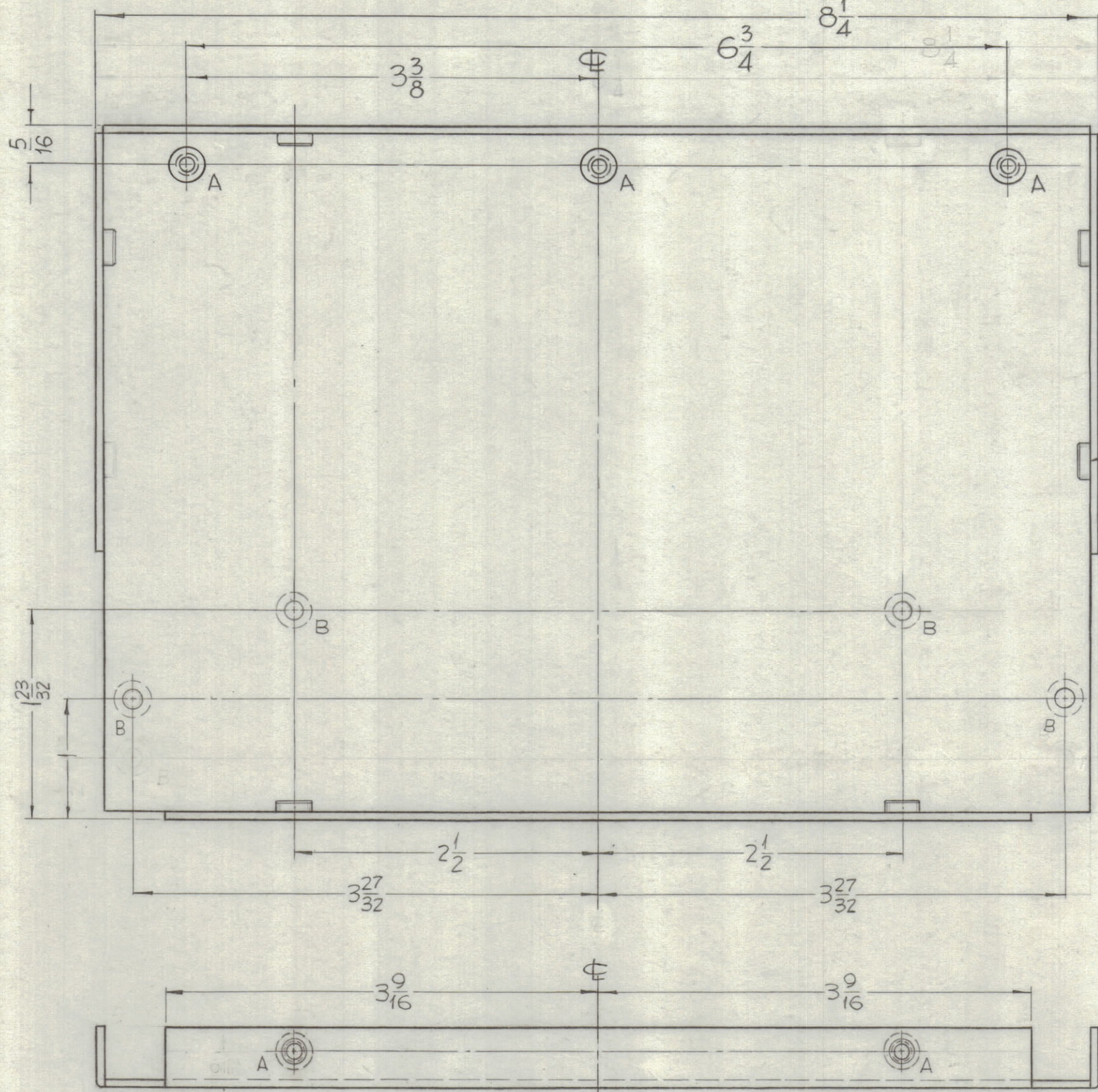


B-DETAIL (4 REQ.)

1 MOUNT ITEM 1 IN ALL 'A' HOLES AFTER FINISHING.



OPPOSITE SIDE IDENTICAL



NOTE:  
 - USE MATERIAL THICKNESS FOR MAXIMUM RADIUS ON ALL BENDS.  
 - ALL ANGLES 90°

NOTES

Q'TY./UNIT	MODEL USED ON	ASS'Y. NO.
1	GPT-200K	AZ-101
SCALE	CODE	
1:1	A	

THE CONTENTS OF THIS DRAWING ARE THE EXCLUSIVE PROPERTY OF THE TECHNICAL MATERIEL CORP. ITS UNAUTHORIZED USE OR REPRODUCTION IN WHOLE OR IN PART IS STRICTLY FORBIDDEN.

REQ'D.	ITEM	PART NUMBER	DESCRIPTION	SYMBOL
9	1	NT-129-0632-4	NUT ROUND, SWAGE TYPE	A

MATERIAL		THE TECHNICAL MATERIEL CORP.	
.064 THICK ALUMINUM 5052-H32		MAMARONECK, NEW YORK	
FINISH		TITLE	
S404 YELLOW IRIDITE		PLATE, SIDE LEFT	
DRAWN	DATE	FINAL APPROVAL	DATE
SRG	2-15-63	[Signature]	
CHECKED	DATE		
JCB	2/11/64		
ELECT. DES.	DATE		
JCB	2/11/64		
MECH. DES.	DATE		
[Signature]	2/16/64		
DECIMALS		FRACTIONS	
.X ± .05		± 1/64	
.XX ± .01		ANGLES ± 0° 30'	
.XXX ± .005			

MS-3268