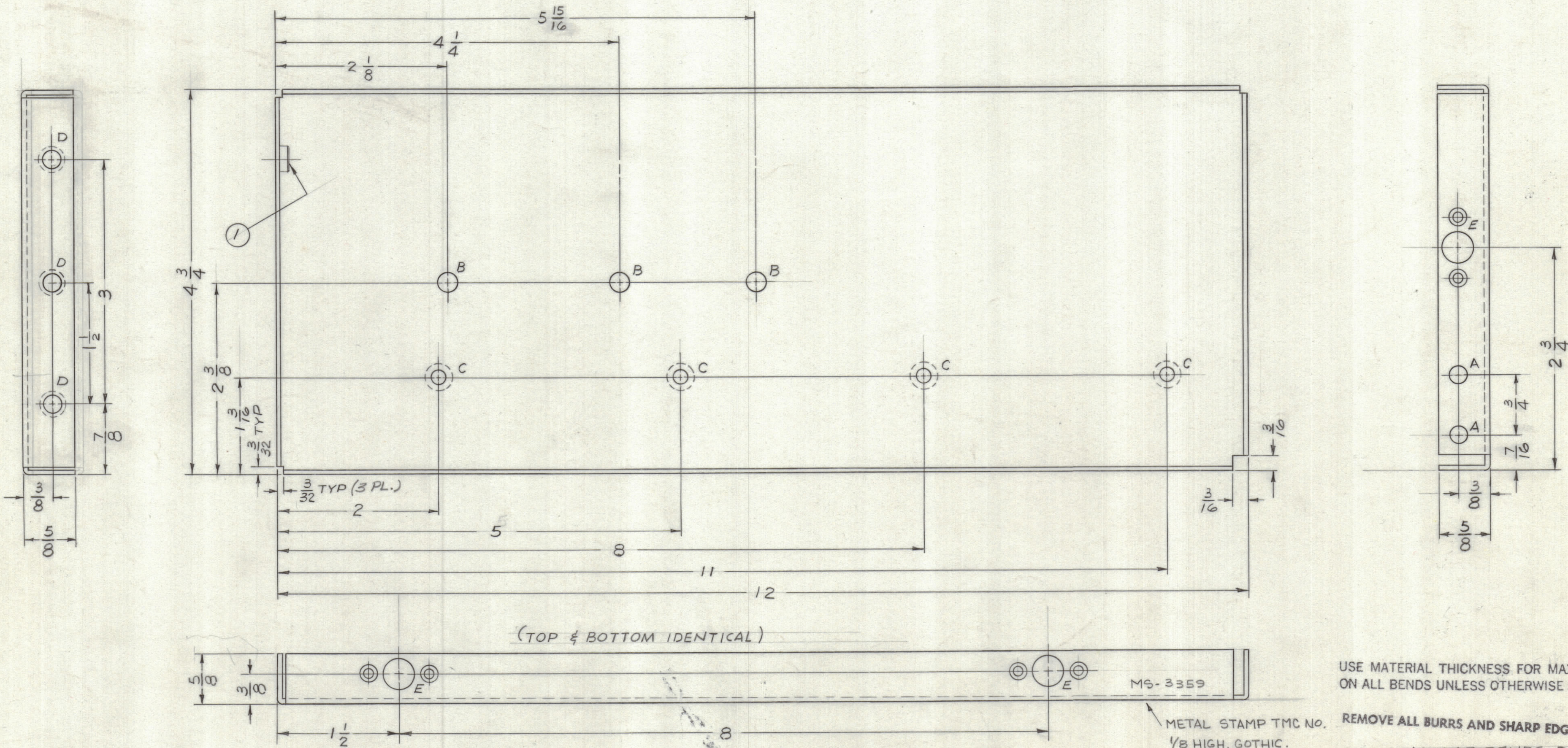
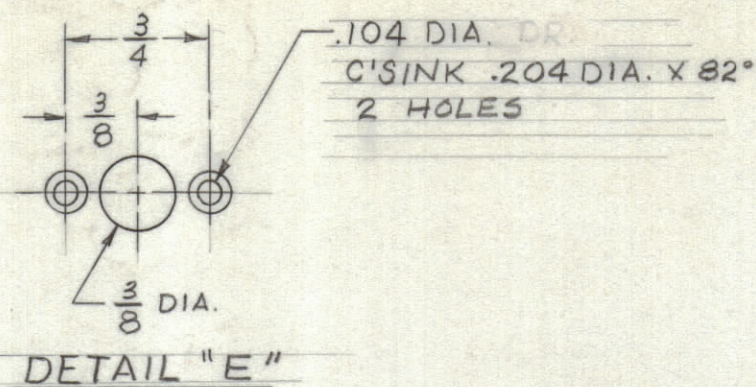


LEGEND

HOLE	DESCRIPTION	REQ'D
A	13/64 DIA.	2
B	15/64 DIA.	3
C	.169 DIA. DR. C'SINK .337 DIA. X 82°	4
D	.224 - .221 DIA.	3
E	SEE DETAIL	5



(TOP & BOTTOM IDENTICAL)

MS-3359

METAL STAMP TMC NO. 1/8 HIGH, GOTHIC.

USE MATERIAL THICKNESS FOR MAX. RADIUS ON ALL BENDS UNLESS OTHERWISE SPECIFIED

REMOVE ALL BURRS AND SHARP EDGES

ALL ANGULAR BENDS 90°
MOUNT ALL INSERTS AFTER FINISHING.

SYM	ZONE	DESCRIPTION	DATE	CH. NO.	DRAFTS	CHECKER	ENG. APP.
UNLESS OTHERWISE SPECIFIED:							
DIMENSIONS ARE IN INCHES			SCALE 1:1				
TOLERANCES ON			MAXIMUM ALLOWABLE TOLERANCES HAVE BEEN DETERMINED AND ANY DEVIATIONS WILL BE CAUSE FOR REJECTION. REMOVE ALL BURRS & SHARP EDGES				
FRACTIONS ± 1/64		DECIMALS ± .005	ANGLES ± 1/2°				

REQ. PER UNIT	MODEL	SECTION	ASS'Y. NO.	DATE
1	LFA-4			4-26-63

REQ. ITEM	PART NO.	DESCRIPTION	SYMBOL
3	1	NT-129-832-4 NUT, ROUND, SWAGE TYPE	D
.064 THK.		POSE	
STOCK SIZE		THE TECHNICAL MATERIEL CORP. MAMARONECK, NEW YORK	
ALUMINUM		PLATE, LEFT SIDE	
MATERIAL		TRAMIREZ <i>TR</i> 6/5/63 TF-11 6/11/63	
5052 H32		DRAWN CHECKED FINAL APPROVAL	
TYPE & TEMPER HEAT TREAT. SPEC.		YEL. IRIDITE, 5404	
FINISH & SPEC. NO.		MS-3359	
ELEC. DES. APP.		MECH. DES. APP.	
SHEET		OF	