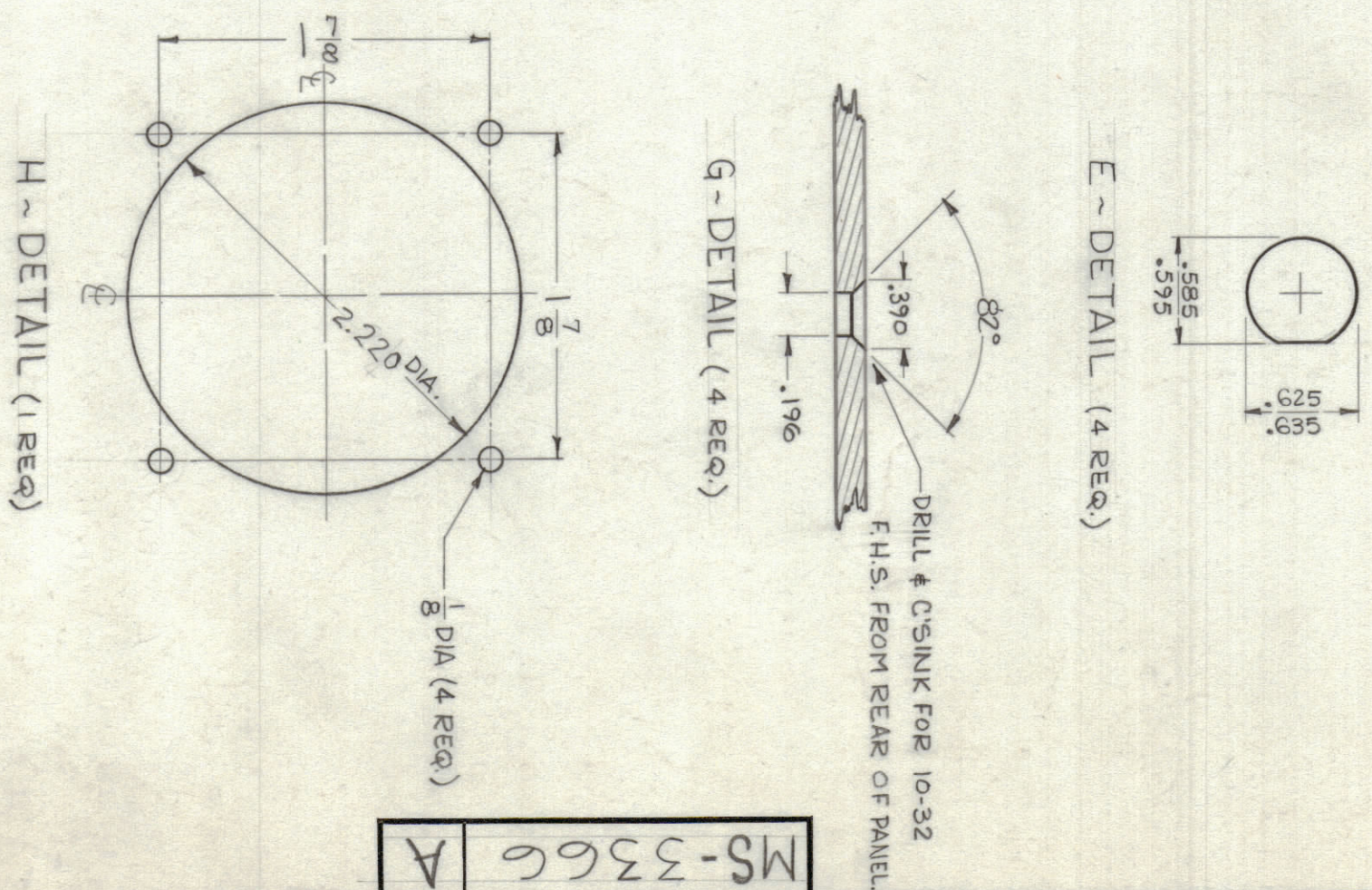
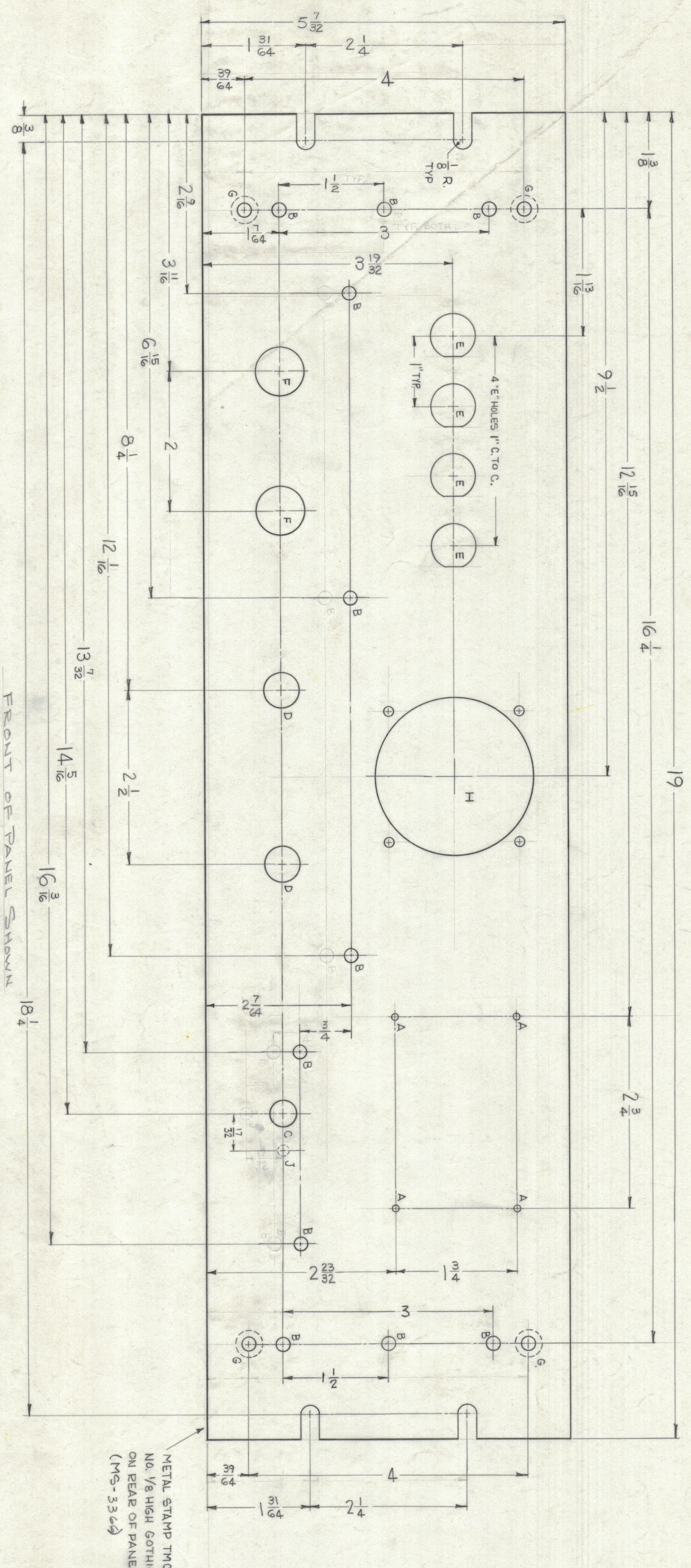


HOLE	DESCRIPTION	REQ
A	.076 DIA.	4
B	3/16 DIA.	1/1
C	3/8 DIA.	1
D	1/2 DIA.	2
E	SEE DETAIL	4
F	11/16 DIA.	2
G	SEE DETAIL	4
H	SEE DETAIL	1
J	5/32 DIA, 1/16 DP FROM REAR	1



MS-3366 A



FRONT OF PANEL SHOWN

- MACHINING -
- LATERAL BOW OF PANEL MUST BE KEPT TO .031 TOLERANCE.
 - MILL ALL EDGES.
 - HOLES MUST BE DRILLED UNLESS OTHERWISE SPECIFIED.
 - PANEL MUST BE FREE OF ALL MACHINING MARKS, GOUGES & SCRATCHES. IF NECESSARY, SAND FRONT OF PANEL WITH NO. 120 GRIT SANDPAPER.

- FINISH NOTES -
- 5404 - IRIDITE 14-2 AL-COAT.
 - 5114 - ZINC CHROMATE PRIMER.
 - 5115 - SMOOTH GRAY ENAMEL.
- FRONT & EDGES ONLY.

SYM	ZONE	DESCRIPTION	DATE	CH. NO.	BY	CHECKED	INC. APP.
D1		2-1/8" DETAIL, 2.220 DIA., WAS 2 1/4"	2-18-65	13493	JZ		

REQ. ITEM	PART NO.	DESCRIPTION	SYMBOL
1	3/16 THICK	ALUMINUM	

REQ. ITEM	DESCRIPTION	DATE
1	LFA-A	4-30-63

REQ. ITEM	PART NO.	DESCRIPTION	SYMBOL
1	2024 T3	FRONT PANEL, MACHINING	