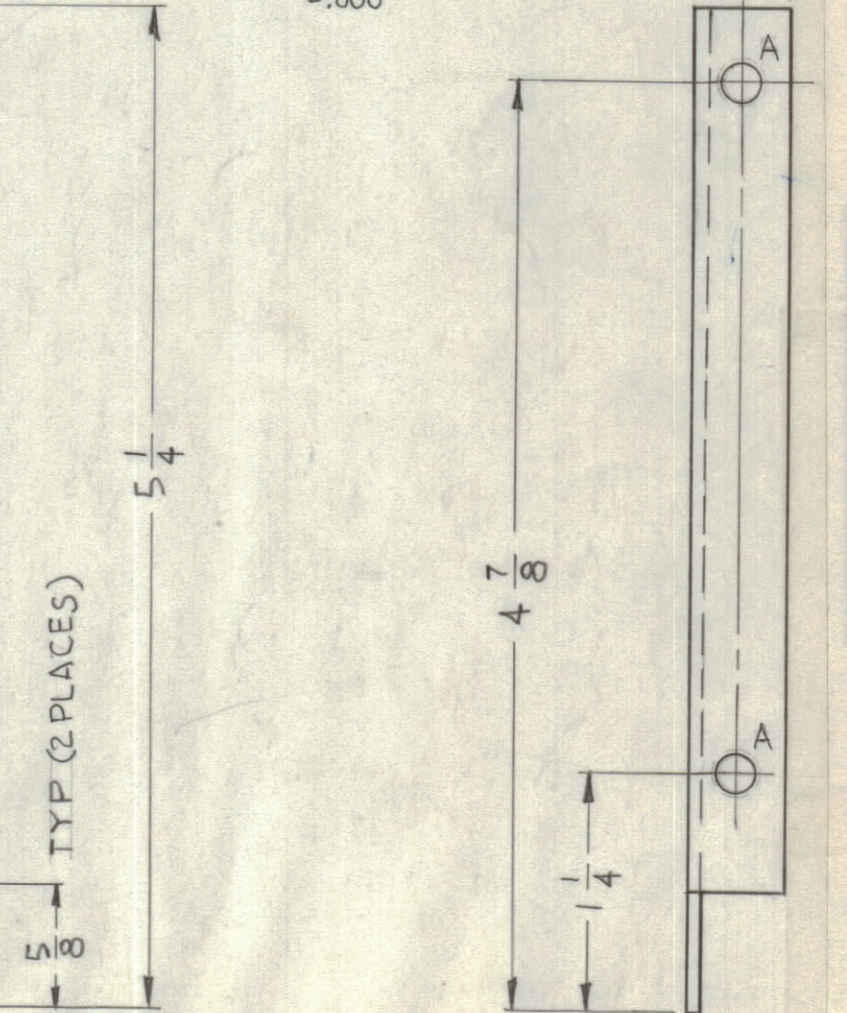
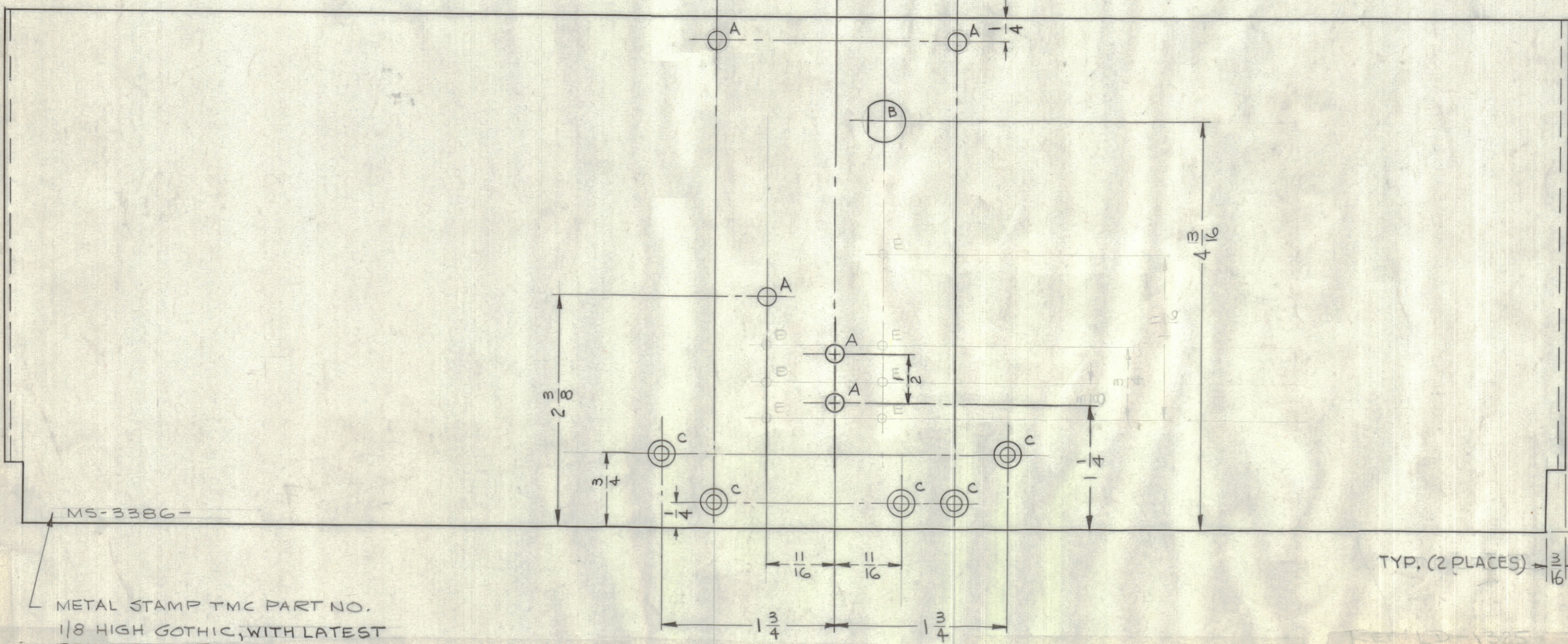
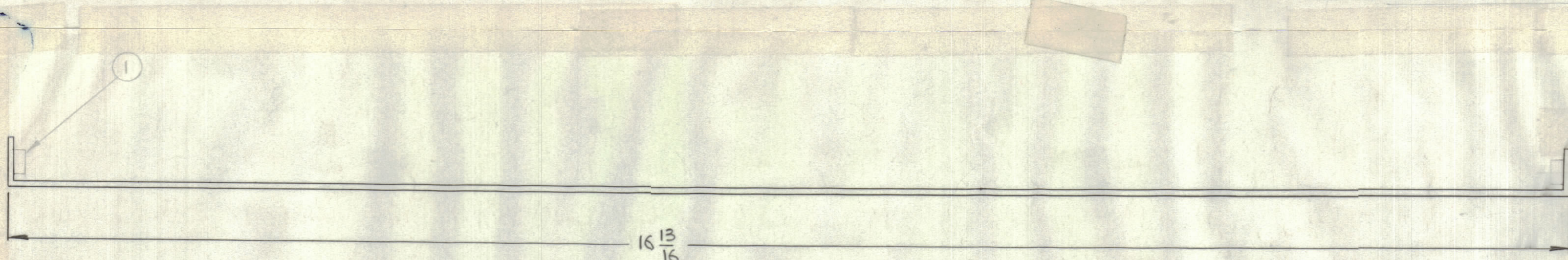
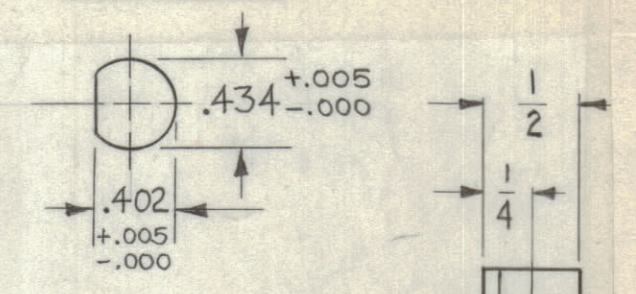


REVISIONS						
ZONE	SYM	DESCRIPTION	DATE	E.M.N. NO.	DRAFT	CHKD APPD
D4	A	"B" HOLE WAS 7/16 DIA. DETAIL	5.22.64	11438	JFB	<i>[Signature]</i>
-4-	B	2 "D" HOLES 1/8 DIA & 5 "E" HOLES 3/32 DIA. DELETED 2 "A" HOLES ADDED ON CENTER LINE	6/1/64	11608	A.M.	<i>[Signature]</i>

HOLE LEGEND		
HOLE	DESCRIPTION	REQD
A	3/16 DIA	9
B	SEE DETAIL	1
C	.144 DIA - CSK 82° X .284 DIA	5
D	1/8 DIA	2
E	3/32 DIA	6
F	.191 - .194 DIA	4

"B"-DETAIL



MS-3386-
METAL STAMP TMC PART NO.
1/8 HIGH GOTHIC, WITH LATEST
REVISION LETTER.

- NOTES:
1. USE MAT'L THICKNESS FOR MAX. BEND RADIUS.
 2. ALL ANGULAR BENDS 90°.
 3. REMOVE ALL BURRS & SHARP EDGES.
 4. MOUNT ITEM #1 IN ALL "F" HOLES AS SHOWN AFTER FINISHING.

NOTES

1	TTR-10	A-2777
Q'TY./UNIT	MODEL USED ON	ASS'Y. NO.
SCALE 1:1	CODE A	

THE CONTENTS OF THIS DRAWING ARE THE EXCLUSIVE PROPERTY OF THE TECHNICAL MATERIEL CORP. ITS UNAUTHORIZED USE OR REPRODUCTION IN WHOLE OR IN PART IS STRICTLY FORBIDDEN.

REF: LD-1325		324 NUT, SWAGE	
REQ'D.	ITEM	PART NUMBER	DESCRIPTION
KOHN LIST OF MATERIAL			
MATERIAL		THE TECHNICAL MATERIEL CORP.	
.064 THK. ALUMINUM		MAMARONECK, NEW YORK	
5052-H32		TITLE	
FINISH		SHIELD, REAR	
S404 YELLOW IRIDITE		DRAWN <i>[Signature]</i>	
UNLESS OTHERWISE SPECIFIED		DATE 5/2/63	
DIMENSIONS ARE IN INCHES AND INCLUDE		CHECKED <i>[Signature]</i>	
CHEMICALLY APPLIED OR PLATED FINISHES		DATE 6/13/63	
DECIMALS		ELECT. DES. RKOHN	
.X ± .05		DATE 1-16-64	
.XX ± .01		MECH. DES. W. JORDAN	
.XXX ± .005		DATE 1/16/64	
TOLERANCES		SHEET	
FRACTIONS ± 1/64		MS-3386	
ANGLES ± 0° 30'		B	
		REV. LTR.	

MS-3386 B