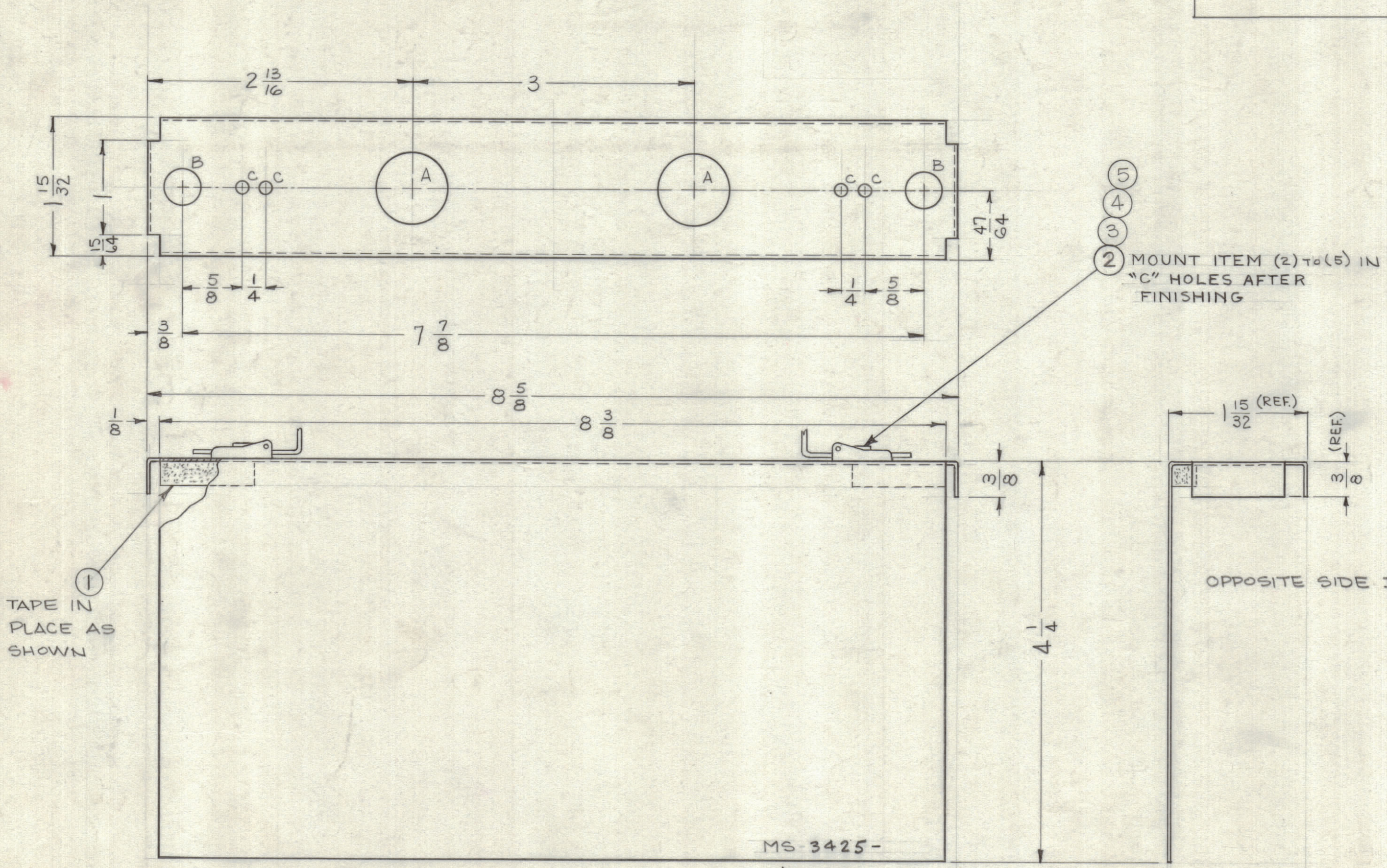


REVISIONS						
ZONE	SYM	DESCRIPTION	DATE	E.M.N. NO.	DRAFT	CHKD
	X1	DWG TITLE WAS COVER-MOUNTING FRAME (BFO MODULE)	4/9/64	1	JL	
	O	ORIGINAL RELEASE FOR PRODUCTION	5/12/64	O	A.M.	
B2	A	ITEM 1 WAS TA III-2-2-1-G	8.4.64	112.16	W.B.	
	B	LD1349-2 & MODEL REF. ADDED	1-2-66	15603		

LEGEND		
HOLE	DESCRIPTION	REQ
A	3/4 DIA.	2
B	3/8 DIA.	2
C	.128 DIA.	4



TAPE IN PLACE AS SHOWN

METAL STAMP TMC PART NO. 1/8 HIGH GOTHIC. W/LATEST REVISION LETTER GOTHIC.

REF: LD1349 FOR VLRA-1
LD1349-2 FOR VLRE-1

UNLESS OTHERWISE SPECIFIED -
1- USE MATERIAL THICKNESS MAXIMUM RADIUS ON ALL BENDS.
2- ALL BENDS TO BE 90°

UNLESS OTHERWISE SPECIFIED:
1. USE MATERIAL THICKNESS FOR MAXIMUM RADIUS ON ALL BENDS.
2. ALL ANGULAR BENDS 90°.
3. REMOVE ALL BURRS AND SHARP EDGES.
4. MOUNT INSERTS AFTER FINISHING.

NOTES

Q'TY./UNIT	MODEL USED ON	ASS'Y. NO.
1	VLRE-1	AX597
1	VLRA-1	AX 424
SCALE	CODE	
1:1	A	

THE CONTENTS OF THIS DRAWING ARE THE EXCLUSIVE PROPERTY OF THE TECHNICAL MATERIEL CORP. ITS UNAUTHORIZED USE OR REPRODUCTION IN WHOLE OR IN PART IS STRICTLY FORBIDDEN.

REQ'D.	ITEM	PART NUMBER	DESCRIPTION	SYMBOL
2	5	FS-119-3	LATCHGUIDE, SNAPSLIDE FASTENER	A-C
2	4	FS-118-2	LATCH, SNAPSLIDE FASTENER	B-C
2	3	WA-131-23	WASHER, SPRING	B-C
2	2	FS-120-2-1-C	POST, SNAPSLIDE FASTENER	C
2	1	TA-III-2-2-1.00G	TAPE, URETHANE	

M. GELLMAN		LIST OF MATERIAL	
MATERIAL	.032, ALUMINUM 5052-H32	THE TECHNICAL MATERIEL CORP. MAMARONECK, NEW YORK	
FINISH	IRIDITE AS PER TMC SPEC. S-404	TITLE COVER, TOP-MOUNTING FRAME (BFO MODULE)	
UNLESS OTHERWISE SPECIFIED DIMENSIONS ARE IN INCHES AND INCLUDE CHEMICALLY APPLIED OR PLATED FINISHES		DRAWN	DATE
		4-8-63	
		CHECKED	DATE
		5-1-64	
		DATE	DATE
			MS-3425
DECIMALS .X ± .05 .XX ± .01 .XXX ± .005		FRACTIONS ± 1/64 ANGLES ± 0° 30'	
TOLERANCES		ELECT. DES. MECH. DES.	
		DATE	
		SHEET	
		REV. LTR.	

MS-3425 B