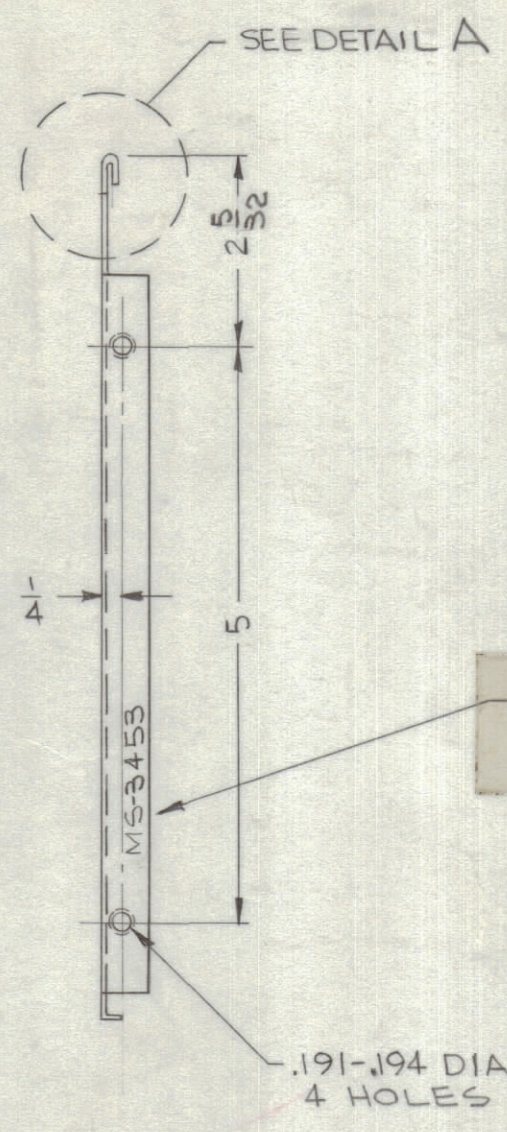
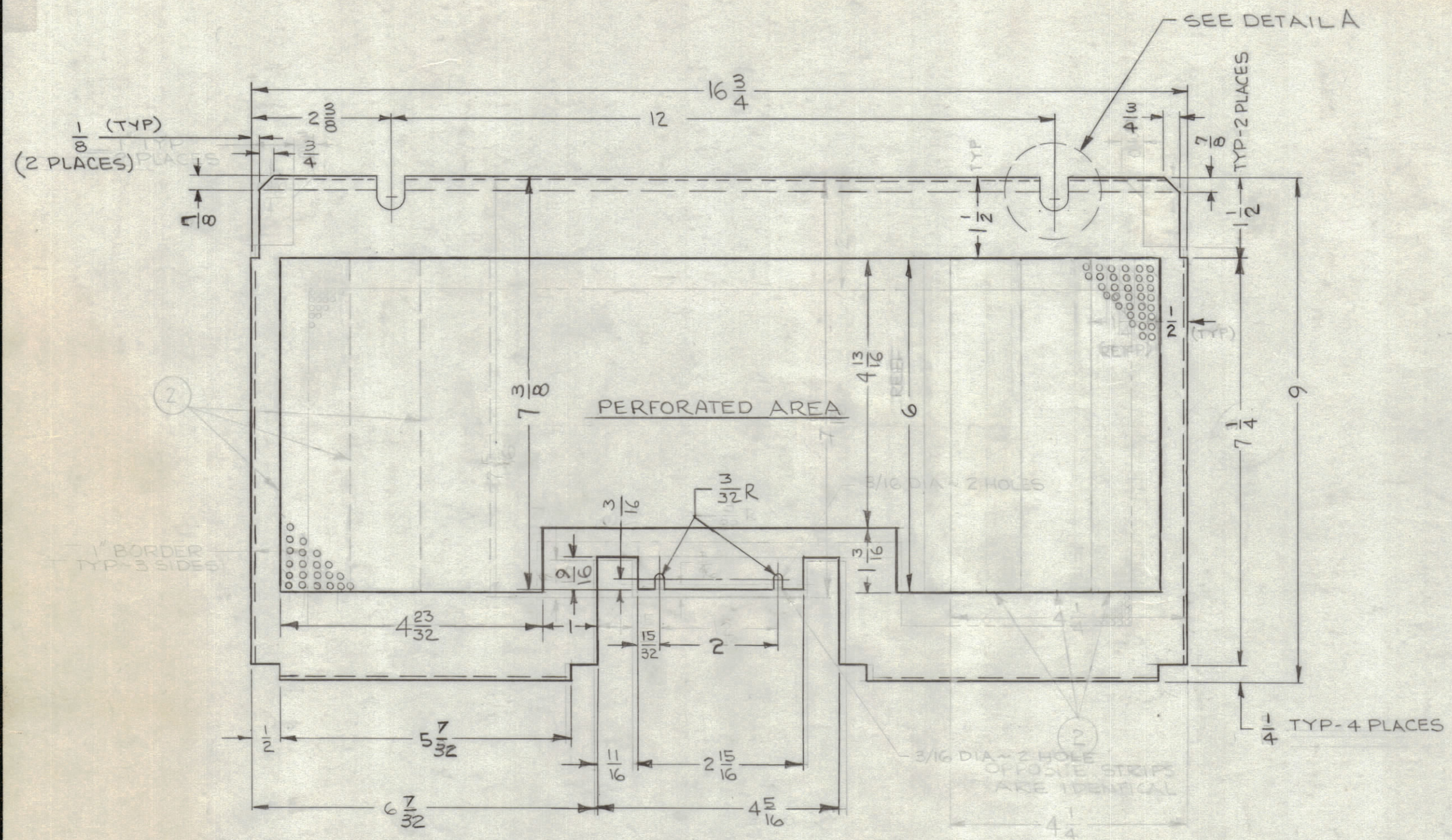
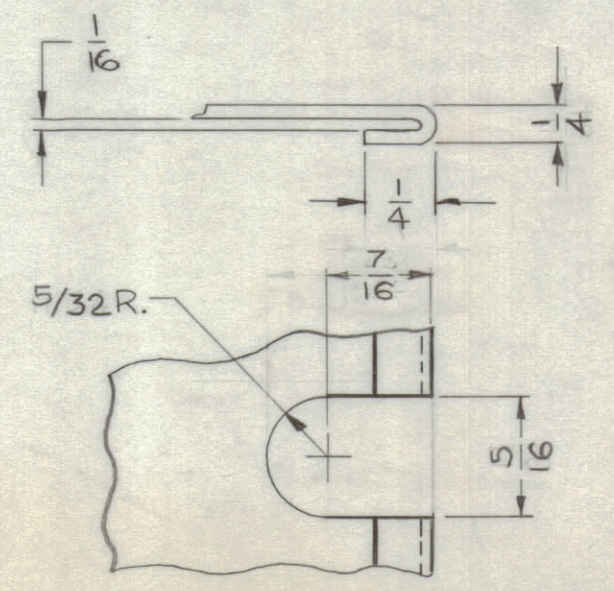
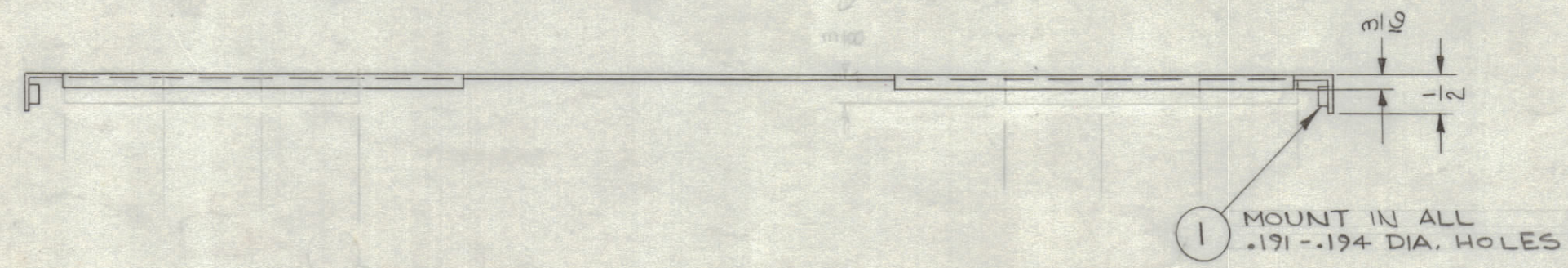


REVISIONS						
ZONE	SYM	DESCRIPTION	DATE	E.M.N. NO.	DRAFT	CHKD APPD
	A	IT. 2 DELETED, PERFORATED AREA W/DIMS ADD. MAT'L & PERFORATION NOTES ADDED.	7.22.64	11923	WB	@ JKA
A6,7	B	ON DETAIL "A" 5/16 WAS 17/32, 7/16 WAS 23/64 ON DETAIL "A" 5/32 R WAS 17/64 R.	8.19.64	12166	WB	@ JKA



METAL STAMP TMC PART NO, WITH LATEST REV. LETTER, 1/8 HIGH GOTHIC.

NOTE:
 MAT'L - .050 PERFORATED ALUM - 5052-H32
 PERFORATIONS - .072 DIA. HOLES ON 1/8 CENTERS STAGGERED.



- ~ UNLESS OTHERWISE SPECIFIED ~
1. USE MAT'L THICKNESS FOR MAX. BEND RADIUS ON ALL BENDS
 2. ALL ANGULAR BENDS 90°
 3. REMOVE ALL BURRS & SHARP EDGES
 4. MOUNT INSERTS AS SHOWN AFTER FINISH

DETAIL A
2 REQ'D

NOTES

1	TTR-10	AX-418
Q'TY./UNIT	MODEL USED ON	ASS'Y. NO.
SCALE 1:2	CODE A	

THE CONTENTS OF THIS DRAWING ARE THE EXCLUSIVE PROPERTY OF THE TECHNICAL MATERIEL CORP. ITS UNAUTHORIZED USE OR REPRODUCTION IN WHOLE OR IN PART IS STRICTLY FORBIDDEN.

REQ'D.	ITEM	PART NUMBER	DESCRIPTION	SYMBOL
4	1	NT-129-632-4	NUT, SWAGE	

JORDAN LIST OF MATERIAL E3037-

MATERIAL	SEE NOTE	THE TECHNICAL MATERIEL CORP. MAMARONECK, NEW YORK	
FINISH	S404 YELLOW IRIDITE	TITLE COVER, BOTTOM	
DRAWN	J. Davis	DATE	7-24-63
CHECKED	[Signature]	DATE	7-25-63
ELECT. DES.	R. JOHN	DATE	1-15-64
MECH. DES.	W. JORDAN	DATE	1/15/64

MS-3453 B

MS-3453 B