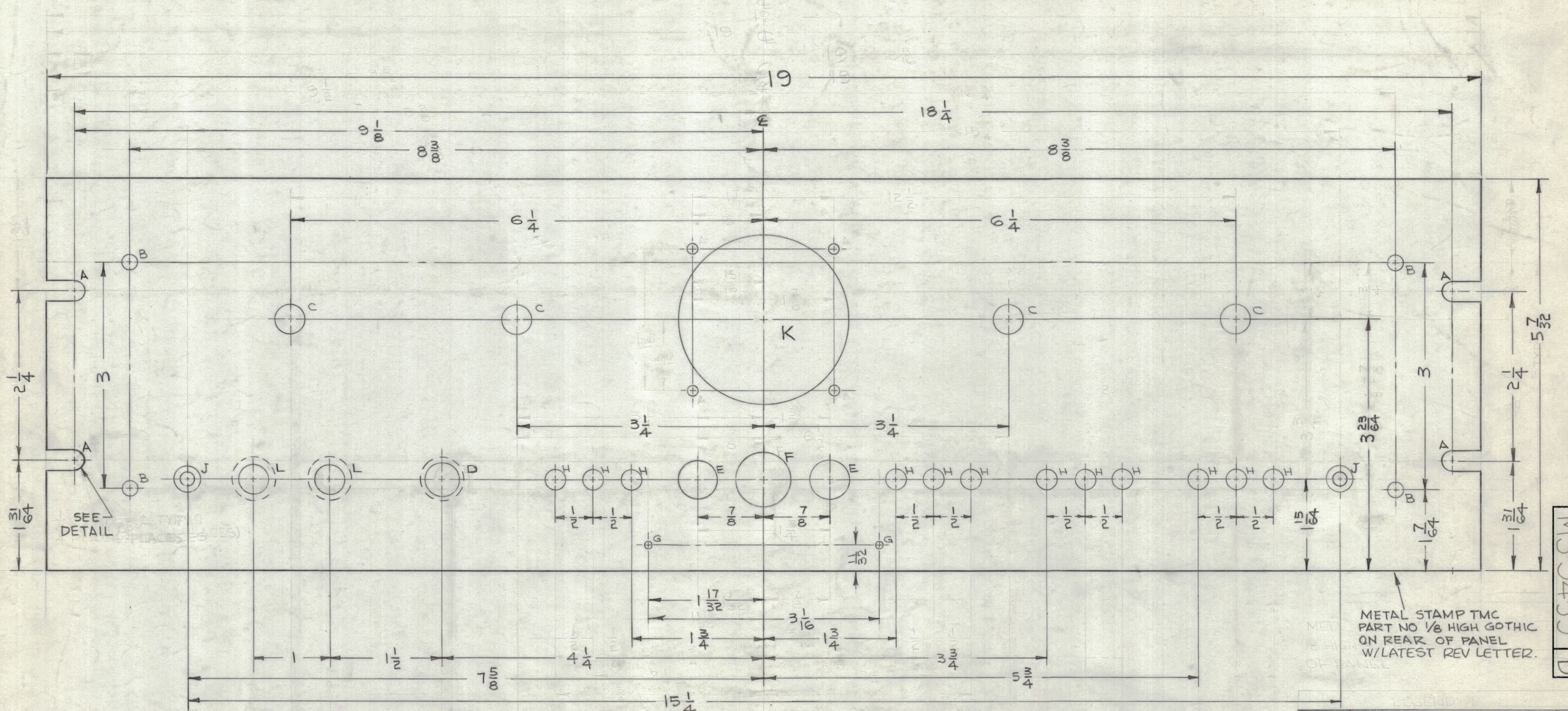
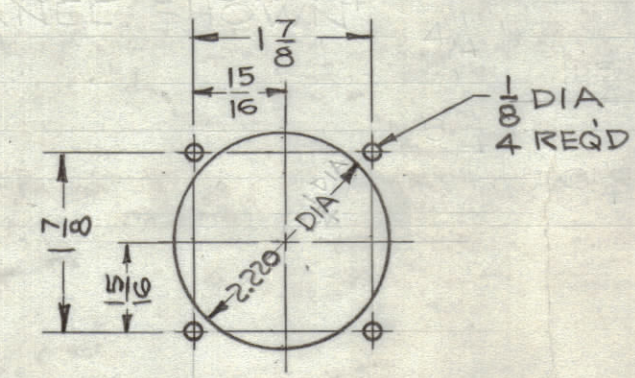
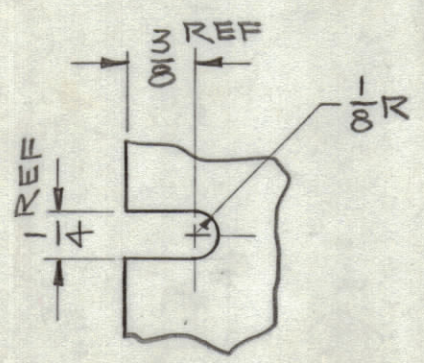


REVISIONS							
ZONE	SYM	DESCRIPTION	DATE	E.M.N. NO.	DRAFT	CHKD	APP'D
-	A	UPDATED & C'BORES ADDED	1/4/69	10701			
B4	B	DET. 'K', 2.220 DIA. HOLE WAS 2 1/4 DIA	2/10/65	13420			



FRONT OF PANEL SHOWN



HOLE	DESCRIPTION	REQ
A	SEE DETAIL A	4
B	3/16 DIA	4
C	3/8 DIA	4
D	7/16 D. (C'BORE 1/16 X 9/16 FROM REAR)	1
E	1/2 DIA	2
F	23/32 DIA	1
G	(# 48) .076 DIA	2
H	.257 DIA	12
J	.169 DIA., C'SK 82° x .337 DIA	2
K	SEE DETAIL K	1
L	3/8" D. (C'BORE 1/16 X 9/16 FROM REAR)	2

MACHINING:

- MILL ALL EDGES.
- HOLES MUST BE DRILLED, UNLESS OTHERWISE SPECIFIED.
- LATERAL BOW OF PANEL MUST BE KEPT TO .031 TOLERANCE.
- PANEL MUST BE FREE OF ALL MACHINING MARKS, GOUGES AND SCRATCHES. IF NECESSARY, SAND FRONT OF PANEL WITH NO. 120 GRIT SANDPAPER.

FINISH NOTES:

- S404 - IRIDITE 14-2 AL-COAT.
- S114 - ZINC CHROMATE PRIMER) FRONT AND
- S115 - SMOOTH GRAY ENAMEL) EDGES ONLY

DVC-1		
172-21 (TELE-SIG CORP)		
Q'TY./UNIT	MODEL USED ON	ASS'Y. NO.
SCALE	CODE	

THE CONTENTS OF THIS DRAWING ARE THE EXCLUSIVE PROPERTY OF THE TECHNICAL MATERIEL CORP. ITS UNAUTHORIZED USE OR REPRODUCTION IN WHOLE OR IN PART IS STRICTLY FORBIDDEN.

REF: LD-1257

REQ'D.	ITEM	PART NUMBER	DESCRIPTION	SYMBOL
LIST OF MATERIAL				
MATERIAL			THE TECHNICAL MATERIEL CORP.	
ALUMINUM, 2024-T3			MAMARONECK, NEW YORK	
3/16 THICK				
FINISH			TITLE	
SEE NOTES			PANEL, FRONT MACHINING	
UNLESS OTHERWISE SPECIFIED			DRAWN	
DIMENSIONS ARE IN INCHES AND INCLUDE			DATE	
CHEMICALLY APPLIED OR PLATED FINISHES			8-5-63	
DECIMALS			CHECKED	
.X ± .05			DATE	
.XX ± .01			4-10-63	
.XXX ± .005			ELECT. DES.	
FRACTIONS			DATE	
± 1/64			8-27-63	
ANGLES			MECH. DES.	
± 0° 30'			DATE	
			8-27-63	

NOTES

MS-3455 B