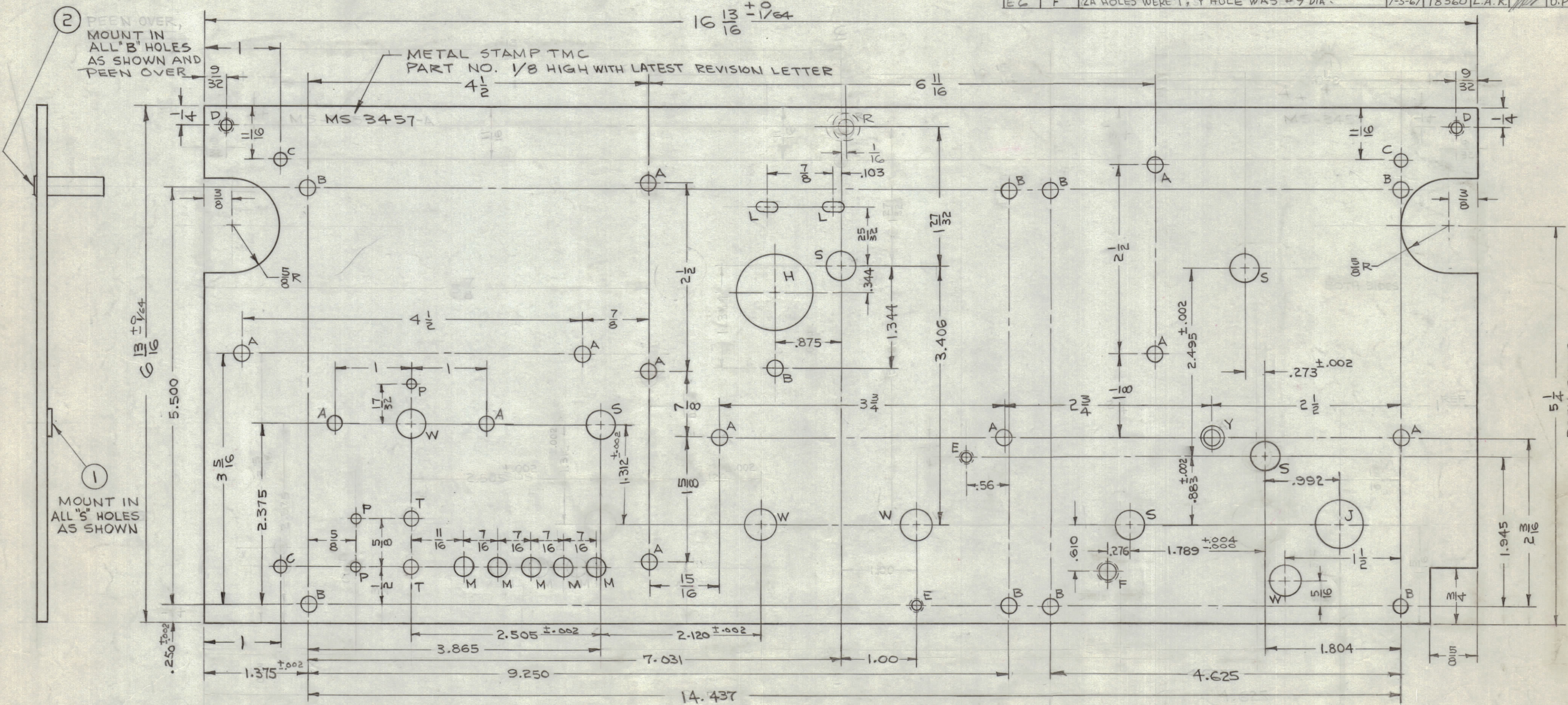


REVISIONS						
ZONE	SYM	DESCRIPTION	DATE	E.M.N. NO.	DRAFT	CHKD
—	A	(2) "P" HOLES & (1) "M" HOLE ADDED. 3/16 DIA "T" HOLES WERE 5/32 X 5/16 SLOTS.	10-3-63	10147	AP	WJ
—	B	REF LD-1363 ADDED	10/17/63	10220	WJ	MJT
—	C	RELOCATED "R" HOLE BB-118-36 WAS -3	11/11/63	10145	WJ	WJ
EG	D	(2) "T" HOLES ADDED; (2) "X" HOLES DELETED WERE 5/32 DIA	7-11-64	11794	WJ	WJ
E	E	CHG'D 1 "A" HOLE TO "Y" HOLE	1-5-67	17634	RME	WJ
EG	F	2A HOLES WERE "T"; Y HOLE WAS #9 DIA.	7-5-67	18360	L.A.K.	D.P.



HOLE	DESCRIPTION	REQ'D
A	13/64 DIA	12
B	#(11) .191 DIA	9
C	11/64 DIA	3
D	DRILL & TAP FOR 8-32	2
E	DRILL & TAP FOR 6-32	2
F	DRILL & TAP FOR 1/4-28	1
H	1" DIA	1
J	5/8 DIA	1
L	1/8 X 9/32 SLOT	2
M	1/4 DIA	5
P	1/8 DIA	3
R	DRILL #9 (.196) DIA. THRU. C'SK 82° TO .390 DIA. FROM REAR OF PANEL.	1
S	.375 <sup>+0.000</sup> / <sub>-.005</sub> DIA	5
T	3/16 DIA SLOT	2
W	13/32 DIA	4
Y	DRILL # 18 (.169) DIA. THRU. C'SK 82° TO .337 DIA. FROM FRONT OF PANEL.	1

- NOTES:
- REMOVE ALL BURRS AND SHARP EDGES.
  - INSTALL ITEMS 1 & 2 AFTER FINISHING

FRONT OF PANEL SHOWN  
NOTE: PANEL MUST BE FLAT WITHIN .003

REF: LD-1363

REQ'D.	ITEM	PART NUMBER	DESCRIPTION	SYMBOL
9	2	TE-108-24	STANDOFF, RIVET TYPE	
5	1	BB-118-36	BEARING, FLANGE TYPE	

LIST OF MATERIAL

MATERIAL	1/8 THK ALUM. 2024-T3	THE TECHNICAL MATERIEL CORP. MAMARONECK, NEW YORK	
FINISH	S-404 YEL IRIDITE	TITLE PLATE, GEAR	

UNLESS OTHERWISE SPECIFIED DIMENSIONS ARE IN INCHES AND INCLUDE CHEMICALLY APPLIED OR PLATED FINISHES	DRAWN	DATE	FINAL APPROVAL	DATE
DECIMALS .X ± .05 .XX ± .01 .XXX ± .005	CHECKED	DATE	MS-3457	F
FRACTIONS ± 1/64 ANGLES ± 0° 30'	ELECT. DES.	DATE		
TOLERANCES	MECH. DES.	DATE	SHEET	REV. LTR.

1	CHG-2A	
QTY/UNIT	MODEL USED ON	ASS'Y. NO.
SCALE 1/1	CODE	
THE CONTENTS OF THIS DRAWING ARE THE EXCLUSIVE PROPERTY OF THE TECHNICAL MATERIEL CORP. ITS UNAUTHORIZED USE OR REPRODUCTION IN WHOLE OR IN PART IS STRICTLY FORBIDDEN.		

NOTES