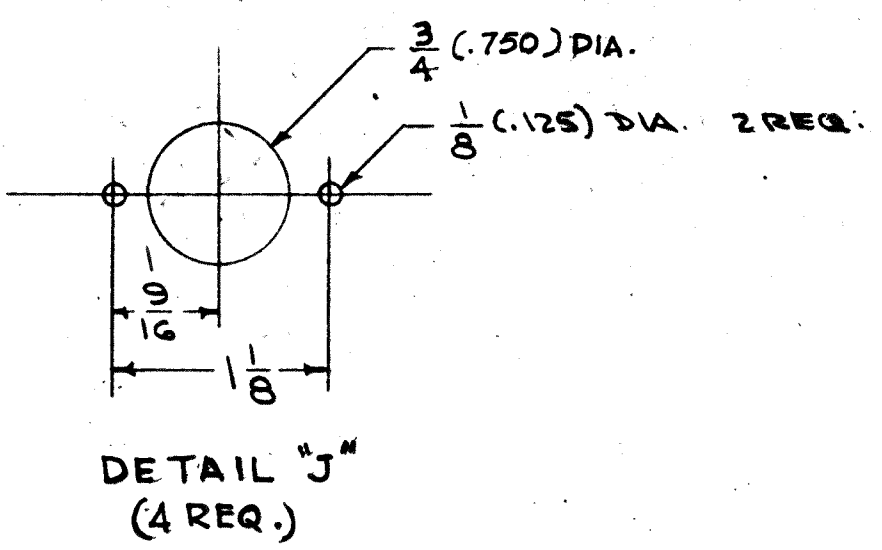


IF IT IS FOUND DESIRABLE TO CHANGE ANY TOLERANCE OR OTHER DETAIL SPECIFIED ON THIS DRAWING NOTIFY THE PURCHASER PROMPTLY.
 MAXIMUM ALLOWABLE TOLERANCES HAVE BEEN DETERMINED AND DEVIATIONS WILL BE CAUSE FOR REJECTION. REMOVE ALL BURRS AND SHARP EDGES.

METAL STRAP THE PART NO. 1/8 HIGH GOTHIC.

LEGEND		
HOLE	DESCRIPTION	REQ.
A	5/32 DIA.	26
B	11/64 DIA.	13
C	7/32 DIA.	12
D	1/4 DIA.	1
E	3/8 DIA.	1
F	5/32 x 5/16 SLOT	3
G	11/64 x 11/32 SLOT	12
J	SEE DETAIL	4
H	53/64 DIA.	2



- UNLESS OTHERWISE SPECIFIED:
1. USE MATERIAL THICKNESS FOR MAXIMUM RADIUS ON ALL BENDS.
 2. ALL ANGULAR BENDS 90°.
 3. REMOVE ALL BURRS AND SHARP EDGES.

NOTE TO PERSONS RECEIVING THIS DRAWING
 THE TECHNICAL MATERIEL CORPORATION claims proprietary right in the material disclosed herein. This drawing is issued in confidence for engineering information only and may not be reproduced or used to manufacture anything shown herein without permission from THE TECHNICAL MATERIEL CORPORATION to the user. This drawing is loaned for mutual assistance and is subject to recall at any time.
 Property of:
 THE TECHNICAL MATERIEL CORPORATION
 MAMARONECK, NEW YORK

REF. LD-1357

REQ. ITEM	PART NO.	DESCRIPTION	SYMBOL
1	064	THE TECHNICAL MATERIEL CORP. MAMARONECK, NEW YORK	
ALUMINUM		MAIN CHASSIS	
MATERIAL QUANTITY PER PC.		RTC-2	
TYPE & TEMPER.		G.D.L.	
HEAT TREAT SPEC.		7102-167	
FINISH & SPEC. NO.		MS-3492	

1	RTC-2	FRAG. NO.	ASBY. NO.	DATE	9-16-63
REQ. PER UNIT					

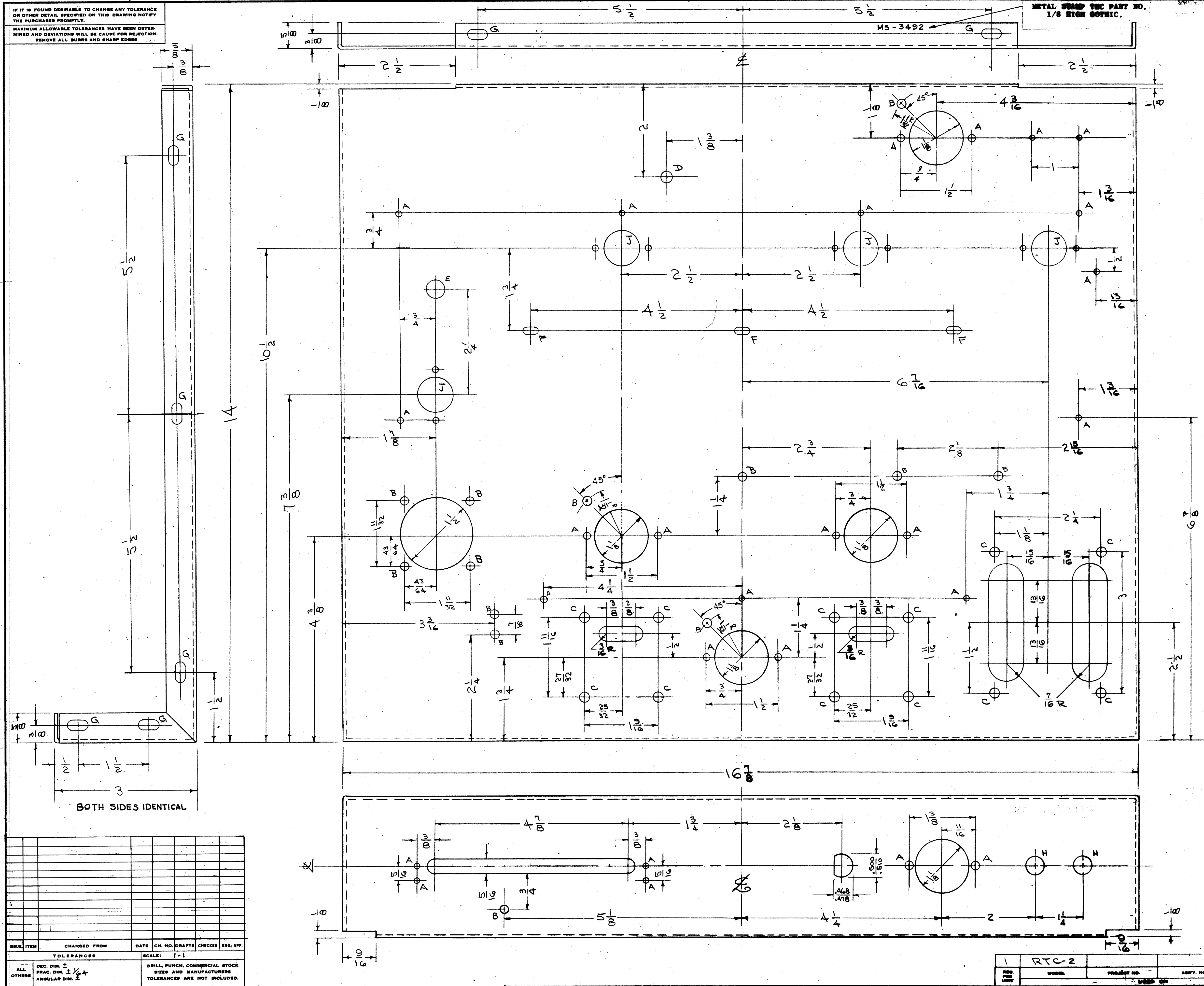
REVISION	DATE	BY	CHKD.	APP.

CHANGED FROM: _____ DATE: _____ CN. NO. DRAFTS: _____ CHECKER: _____ ENG. APP.: _____

TOLERANCES: _____ SCALE: 1-1

ALL DIM. ± 1/64
 DEC. DIM. ± 1/100
 ANGULAR DIM. ± 1/2°

DRILL PUNCH COMMERCIAL STOCK
 SIZES AND MANUFACTURERS
 TOLERANCES ARE NOT INCLUDED.



MS-3492