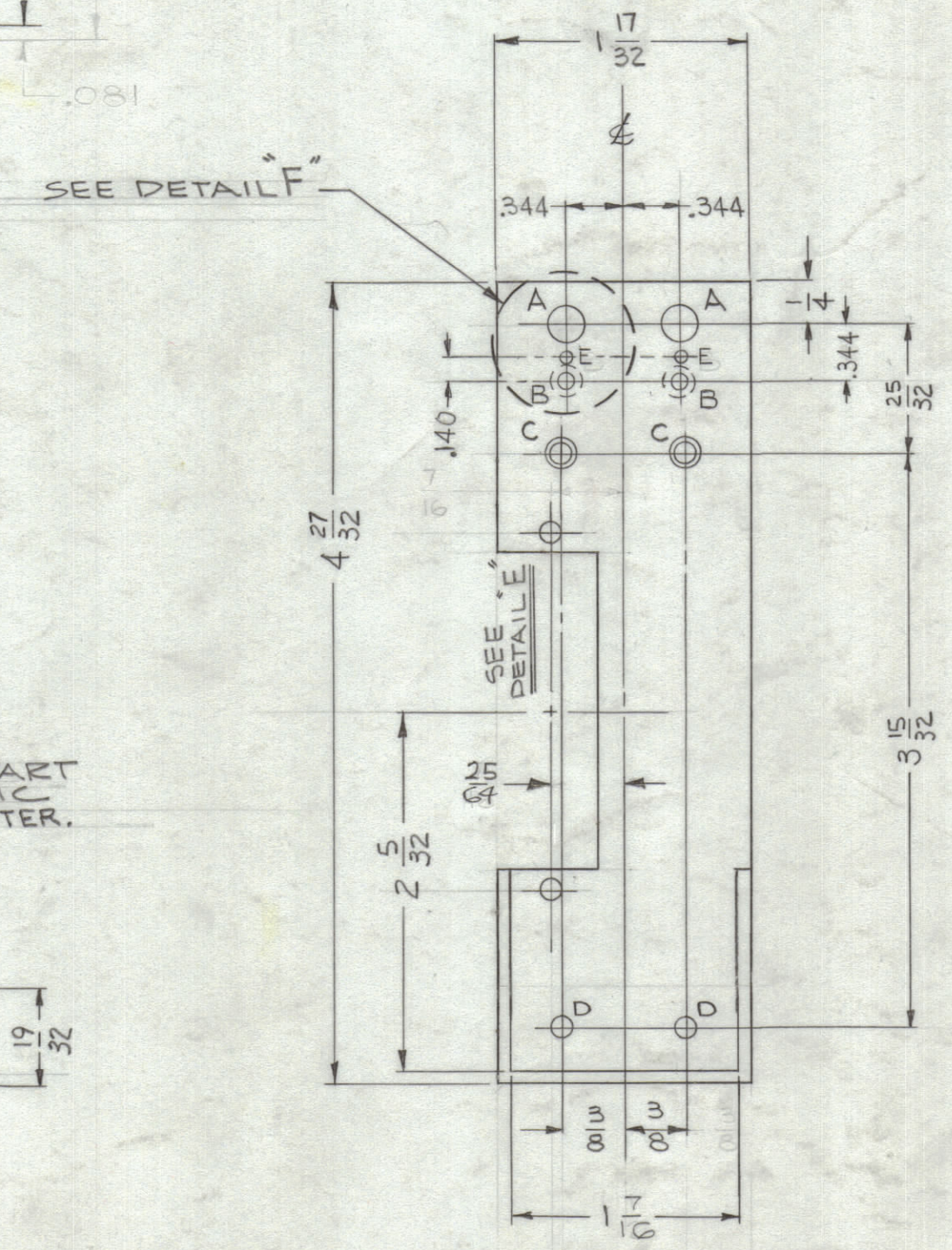
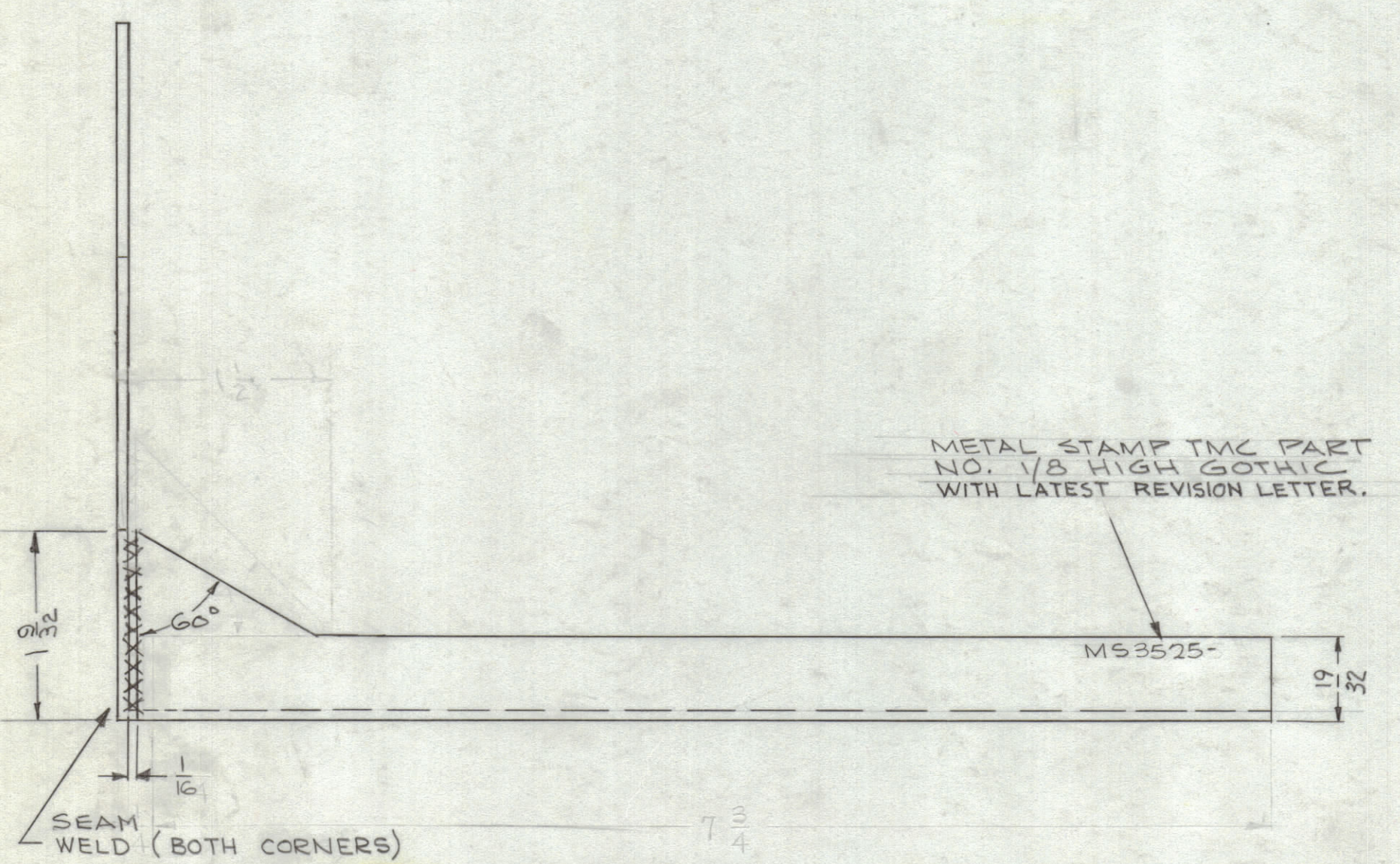
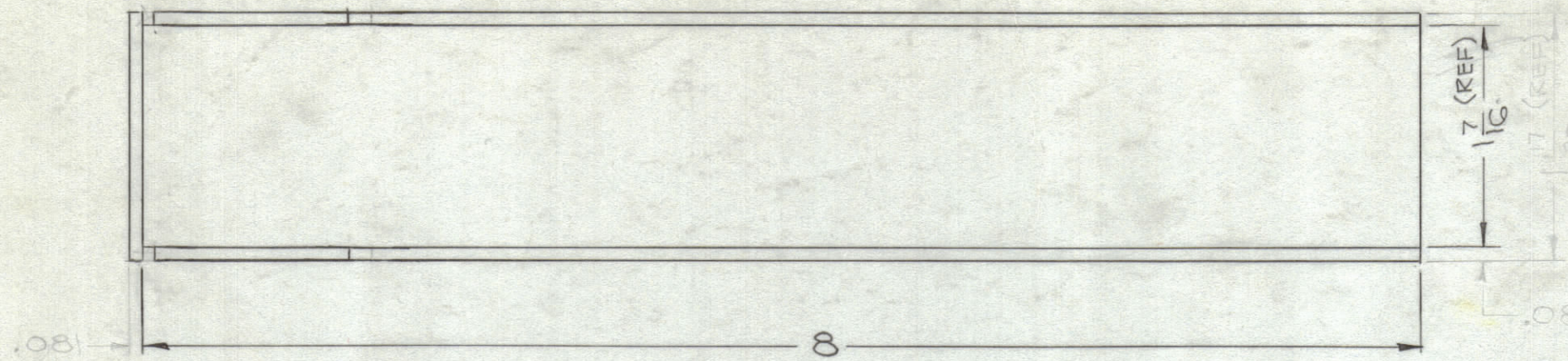
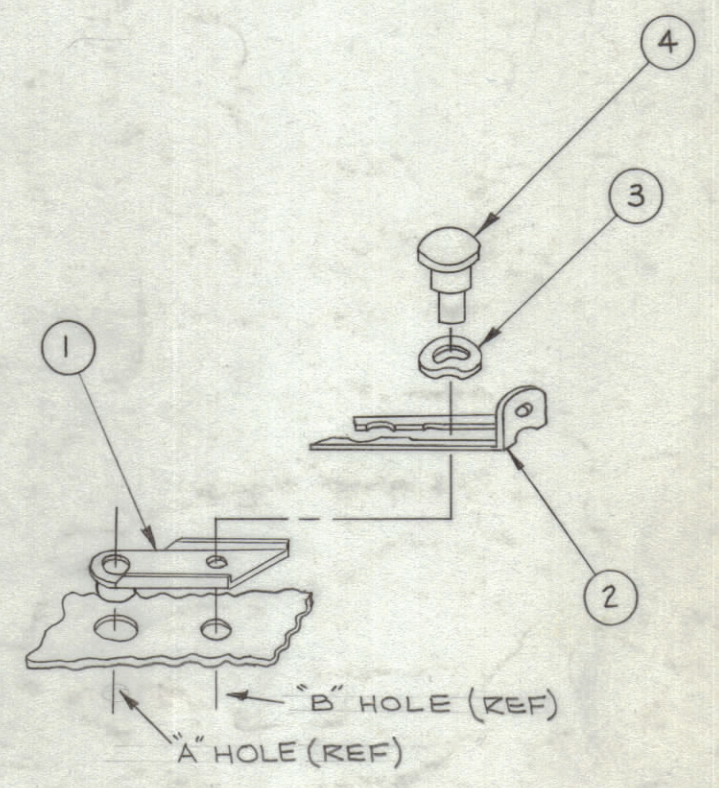


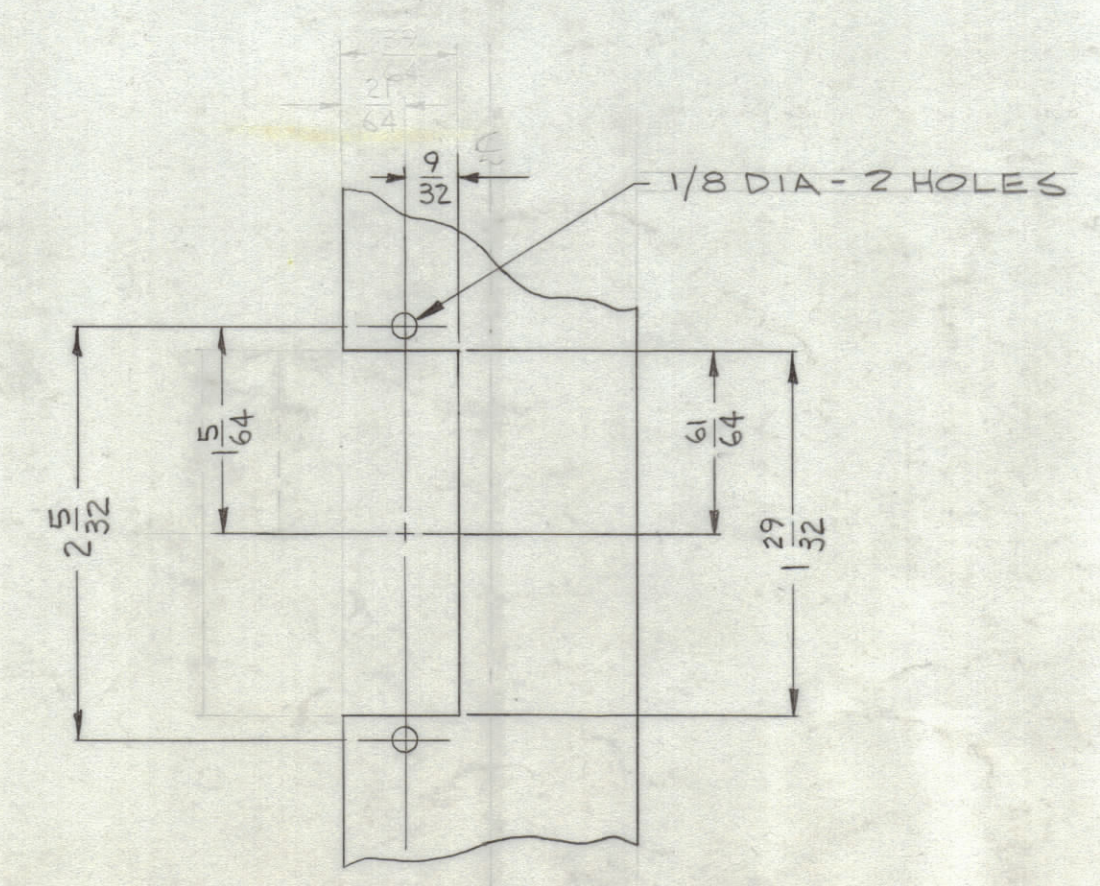
REVISIONS							
ZONE	SYM	DESCRIPTION	DATE	E.M.N. NO.	DRAFT	CHKD	APFD
F3	A	② "E" HOLES WITH LOC. DIM. ADD; IT. 1 WAS FS119-1; IT. 4 WAS FS120-2.	3.12.65	13643	PT	RH	
	B	39/64 DELE FR DETAIL E; 25/64 DIM WAS 7/16	11.1.66	17130	WV	PT	



HOLE LEGEND		
HOLE	DESCRIPTION	REQD
A	.228 DIA	2
B	.082 DIA - C-BORE 3/16 DIA. X.039 DEEP	2
C	.120 DIA - CSK 82° X.230D	2
D	1/8 DIA	2
E	1/16 DIA.	2



DETAIL F
MOUNT ITEMS 1, 2, 3 & 4 IN "A" & "B" HOLES AS SHOWN AFTER FINISH



DETAIL E
SCALE 1:1

- NOTES:
1. USE MAT'L THICKNESS FOR MAX. BEND RADIUS ON ALL BENDS.
 2. ALL ANGULAR BENDS 90°
 3. REMOVE ALL BURRS & SHARP EDGES.

REQ'D.	ITEM	PART NUMBER	DESCRIPTION	SYMBOL
2	4	FS-120-1	POST, SNAPSLIDE FASTENER	
2	3	WA-131-22	WASHER, SPRING TENSION	
2	2	FS-118-1	LATCH, SNAPSLIDE FASTENER	
2	1	FS-119-2	LATCHGUIDE, SNAPSLIDE FASTENER	

KOHN LIST OF MATERIAL E3037-				
MATERIAL .081 THK ALUMINUM 5052-H32		THE TECHNICAL MATERIEL CORP. MAMARONECK, NEW YORK		
FINISH S404 YELLOW IRIDIUM		TITLE BRACKET, SUPPORT TEST MODULE		
DRAWN <i>[Signature]</i>	DATE 9/13/63	FINAL APPROVAL <i>[Signature]</i>		DATE
CHECKED <i>[Signature]</i>	DATE 1/12/64	PART NUMBER MS 3525		REV. LTR. B
ELECT. DES. <i>[Signature]</i>	DATE 2/16/64	SHEET		
MECH. DES. <i>[Signature]</i>	DATE 2/16/64			

TTR-10		
Q'TY./UNIT	MODEL USED ON	ASS'Y. NO.
SCALE 1:1	CODE A	
THE CONTENTS OF THIS DRAWING ARE THE EXCLUSIVE PROPERTY OF THE TECHNICAL MATERIEL CORP. ITS UNAUTHORIZED USE OR REPRODUCTION IN WHOLE OR IN PART IS STRICTLY FORBIDDEN.		

NOTES

MS 3525
B