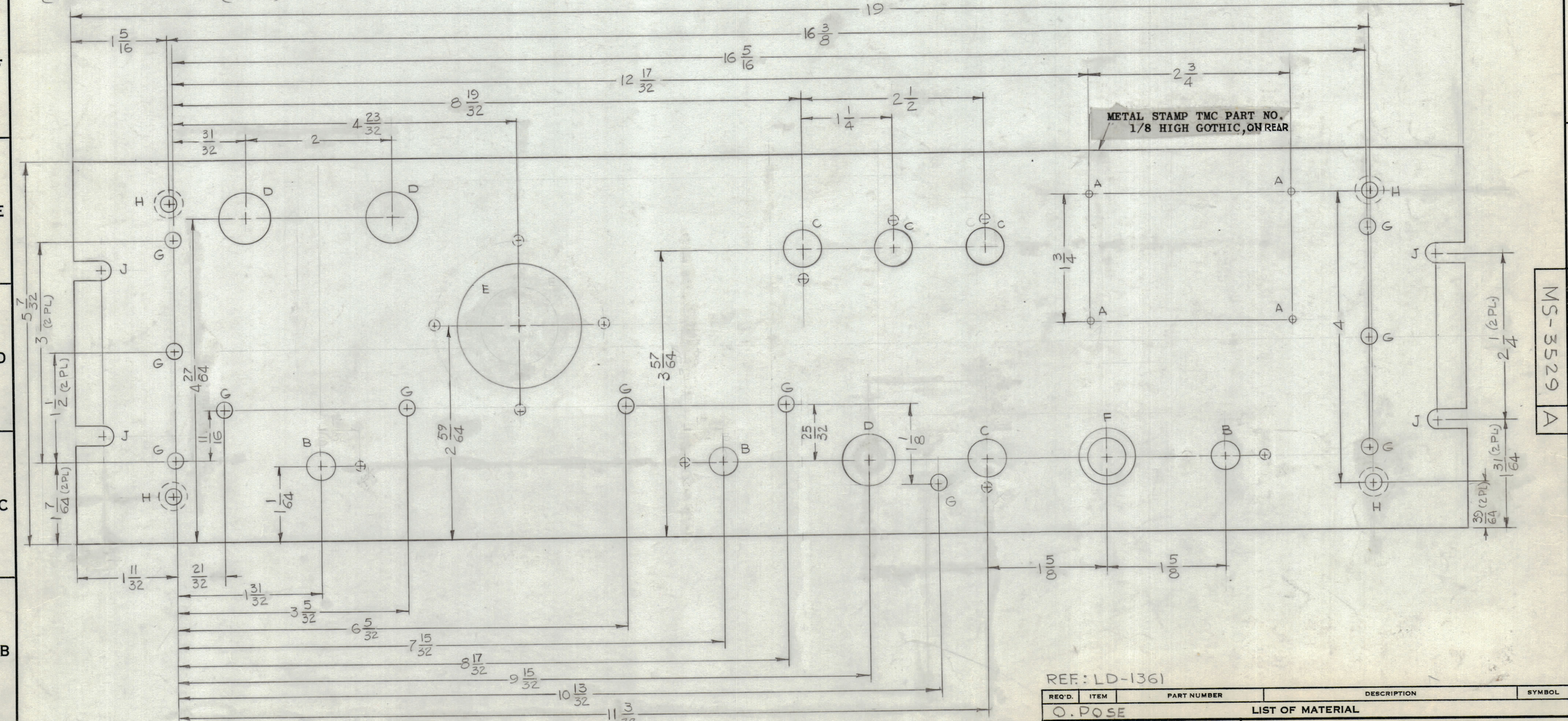
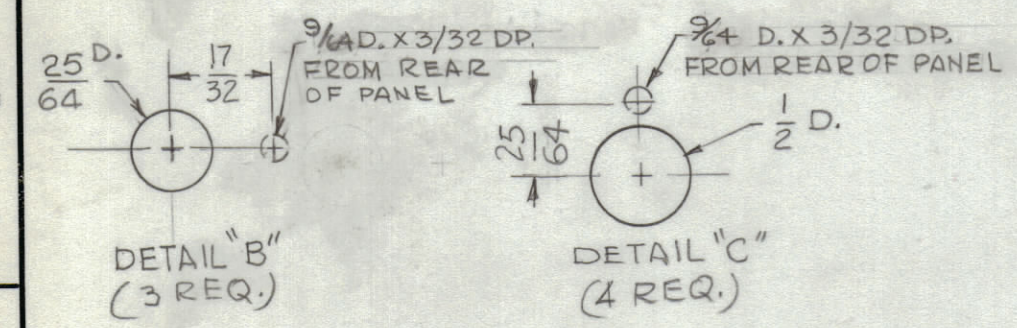
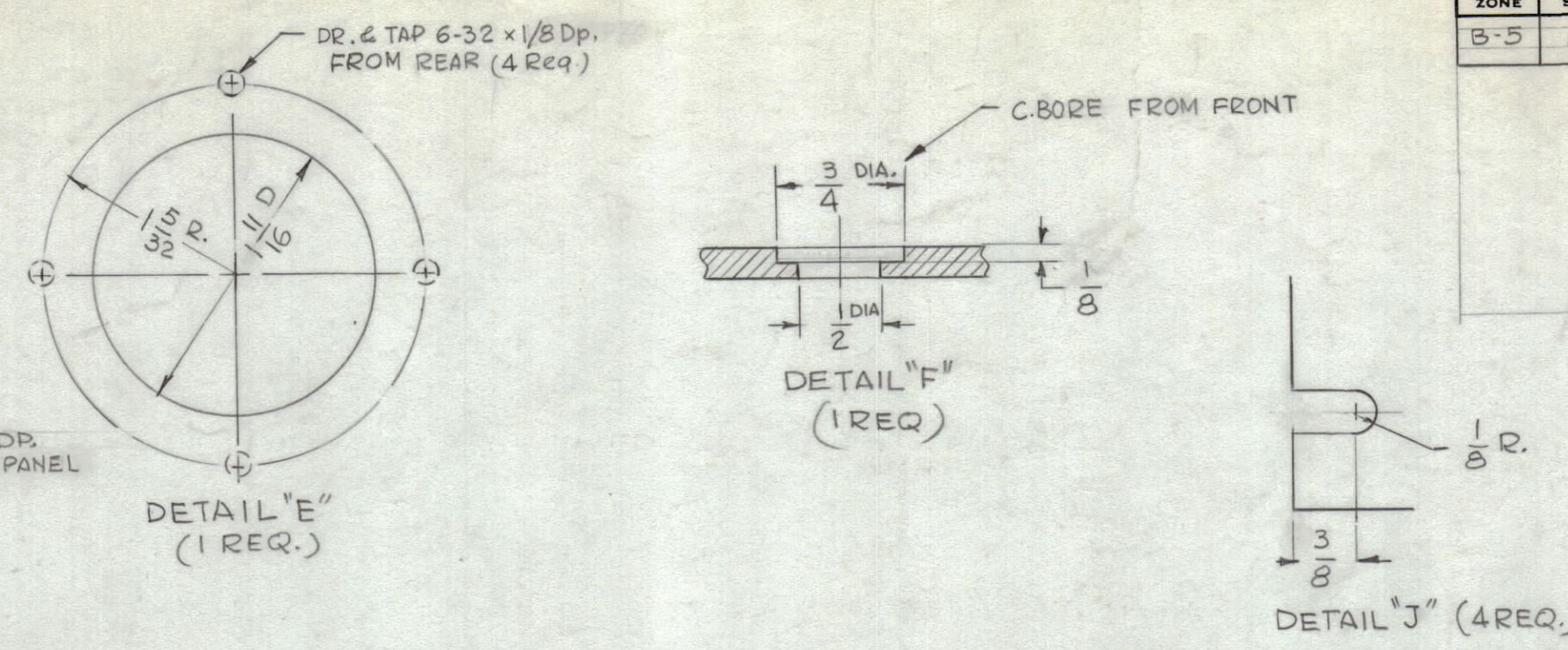


HOLE	DESCRIPTION	REQ.
A	≈ .47 DRILL (.078) DIA	4
B	SEE DETAIL "B"	3
C	SEE DETAIL "C"	4
D	11/16 DIA.	3
E	SEE DETAIL "E"	1
F	SEE DETAIL "F"	1
G	13/64 DIA.	11
H	.196 D. C'SINK 82° TO .390 DIA.	4
J	SEE DETAIL	4

REVISIONS					
ZONE	SYM	DESCRIPTION	DATE	E.M.N. NO.	APPD
B-5	A	DIM. 8 17/32 WAS 8 11/32	3.20.64	11056	JWB



FINISH NOTES:

- S404 - IRIDITE 14-2 AL-COAT.
- S114 - ZINC CHROMATE PRIMER) FRONT AND
- S115 - SMOOTH GRAY ENAMEL) EDGES ONLY

MACHINING:

- MILL ALL EDGES.
- Holes MUST BE DRILLED, UNLESS OTHERWISE SPECIFIED.
- LATERAL BOW OF PANEL MUST BE KEPT TO .031 TOLERANCE.
- PANEL MUST BE FREE OF ALL MACHINING MARKS, GOUGES AND SCRATCHES. IF NECESSARY, SAND FRONT OF PANEL WITH NO. 120 GRIT SANDPAPER.

1	MSR-9	
QTY./UNIT	MODEL USED ON	ASSY. NO.
SCALE 1:1	CODE A	
THE CONTENTS OF THIS DRAWING ARE THE EXCLUSIVE PROPERTY OF THE TECHNICAL MATERIEL CORP. ITS UNAUTHORIZED USE OR REPRODUCTION IN WHOLE OR IN PART IS STRICTLY FORBIDDEN.		

REF: LD-1361

REQ'D.	ITEM	PART NUMBER	DESCRIPTION	SYMBOL
O. POSE LIST OF MATERIAL				
MATERIAL		3/16 THK ALUMINUM 2024-T3		
FINISH		SEE FINISH NOTE		
UNLESS OTHERWISE SPECIFIED DIMENSIONS ARE IN INCHES AND INCLUDE CHEMICALLY APPLIED OR PLATED FINISHES		TOLERANCES		
DECIMALS .X ± .05 .XX ± .01 .XXX ± .005		FRACTIONS ± 1/64 ANGLES ± 0° 30'		
DRAWN G.D.L		DATE 5-27-63		
CHECKED		DATE 12-15-63		
ELECT. DES.		DATE		
MECH. DES.		DATE 12-12-63		
THE TECHNICAL MATERIEL CORP. MAMARONECK, NEW YORK		TITLE PANEL, FRONT		
FINAL APPROVAL BP		DATE		
MS-3529 A		REV. LTR.		

MS-3529 A