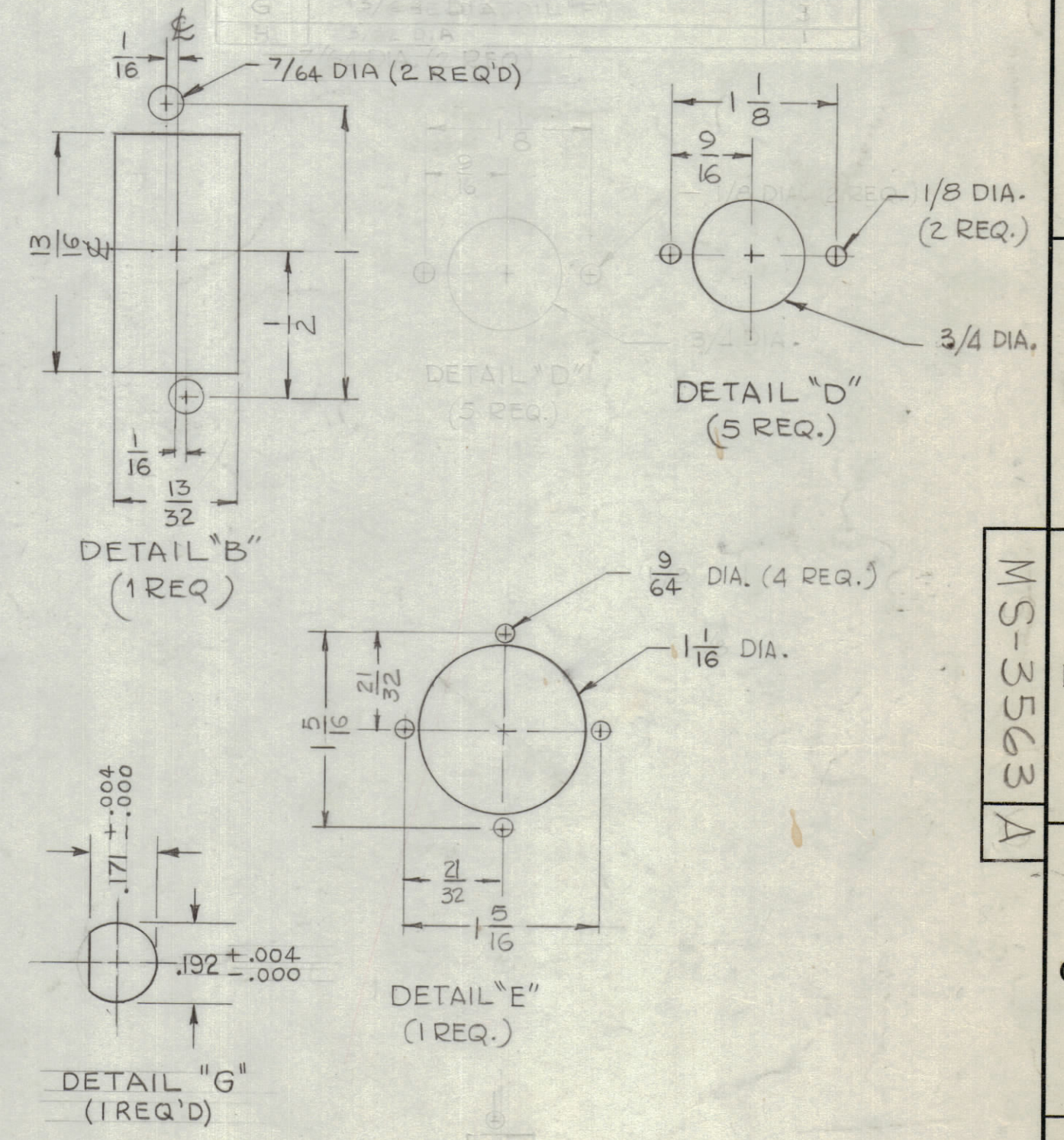


REVISIONS							
ZONE	SYM	DESCRIPTION	DATE	E.M.N. NO.	DRAFT	CHKD	APPD
F4	X1	ADDED "G" HOLE. ROTATE SELECT ORIENTATION TO 45°	11/10/63		T.R.		
FG	X2	1/8 DIM ADDED BET. E + D HOLES	12/21/63	X2		TRC	TRC
B-734	X3	(2) "G" HOLES WERE "A" HOLES	1-22-64	X3	TRC		TRC
O		ORIGINAL RELEASE FOR PRODUCTION	4-20-64	O	A.M.	@	
A		QTY. OF "G" HOLES WAS 3. "B" HOLES WAS 2. "H" ADDED TO EXISTING HOLE. 2 "J" HOLES ADDED ON HOLE LEGEND "G" HOLE READ (SEE DETAIL "F")	6/10/64	11534	A.M.	@	TRC

HOLE	DESCRIPTION	REQ.
A	5/32 DIA.	2
B	SEE DETAIL "B"	1
C	.312 DIA.	2
D	SEE DETAIL "D"	5
E	SEE DETAIL "E"	1
F	.161 - .164 DIA	6
G	SEE DETAIL "G"	1
H	3/32 DIA.	1
J	13/64 DIA.	2



METAL STAMP TMC PART NO. 1/8 HIGH GOTHIC. MS-3563-A

MOUNT IN ALL "F" HOLES AS SHOWN

- UNLESS OTHERWISE SPECIFIED:
1. USE MATERIAL THICKNESS FOR MAXIMUM RADIUS ON ALL BENDS.
 2. ALL ANGULAR BENDS 90°.
 3. REMOVE ALL BURRS AND SHARP EDGES.
 4. MOUNT INSERTS AFTER FINISHING.

4	MSA-1	AX-469
QTY./UNIT	MODEL USED ON	ASS'Y. NO.
SCALE	CODE	
1:1	A	

THE CONTENTS OF THIS DRAWING ARE THE EXCLUSIVE PROPERTY OF THE TECHNICAL MATERIEL CORP. ITS UNAUTHORIZED USE OR REPRODUCTION IN WHOLE OR IN PART IS STRICTLY FORBIDDEN.

REF: LD-1432			
6	1	NT-129-440-4	NUT, ROUND, SWAGE TYPE
REQ'D.	ITEM	PART NUMBER	DESCRIPTION
T. AALTONEN LIST OF MATERIAL			
MATERIAL .062 THK ALUMINUM 5052-H32		THE TECHNICAL MATERIEL CORP. MAMARONECK, NEW YORK	
FINISH 5404 IRIDITE 14-2 AL COAT		TITLE CHASSIS, ELECTRICAL, MODULE	
UNLESS OTHERWISE SPECIFIED DIMENSIONS ARE IN INCHES AND INCLUDE CHEMICALLY APPLIED OR PLATED FINISHES		DRAWN G.D.L. DATE 7-1-63	
DECIMALS .X ± .05 .XX ± .01 .XXX ± .005		CHECKED @ DATE 3-12-64	
FRACTIONS ± 1/64 ± 0° 30'		ELECT. DES. TRC DATE 3/12/64	
TOLERANCES		MECH. DES. TRC DATE 3/12/64	
		FINAL APPROVAL MS-3563-A DATE 4/20/64	
		SHEET	
		REV. LTR.	

MS-3563 A