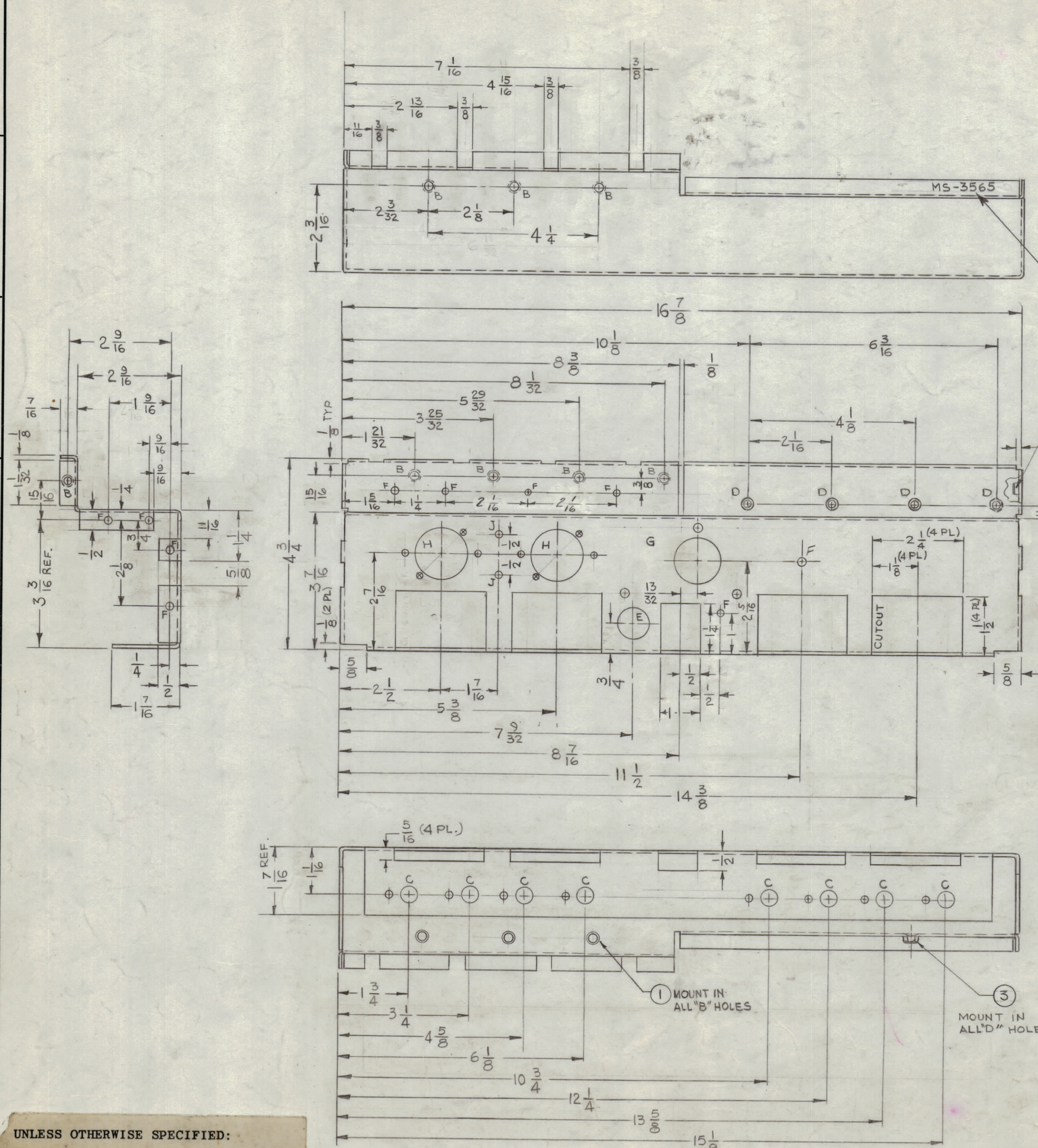
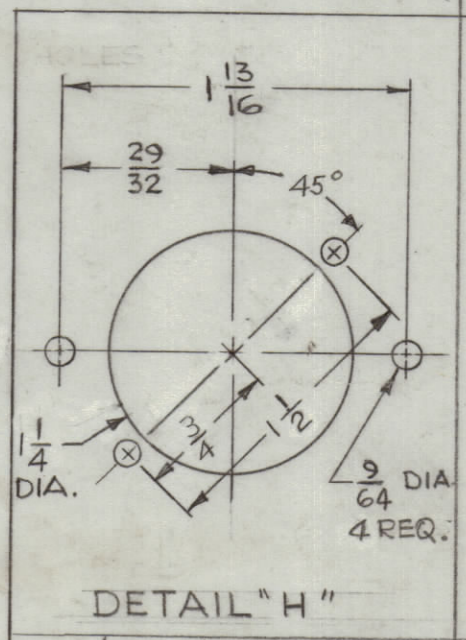
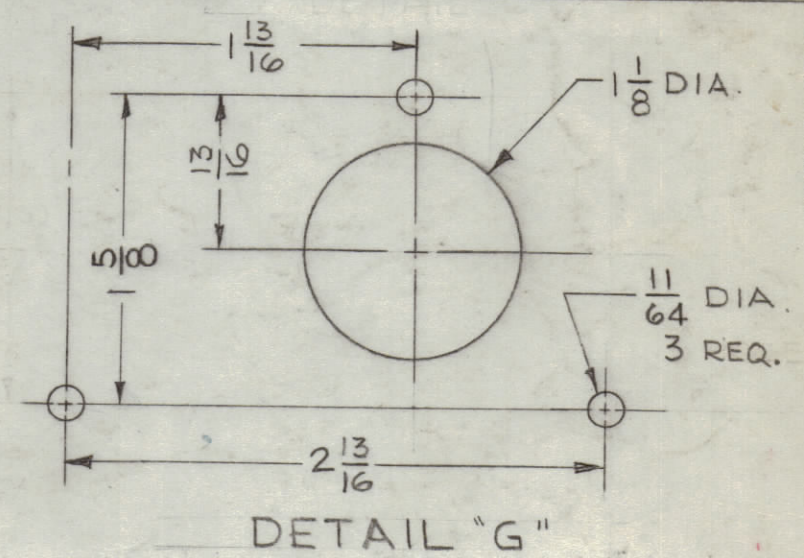
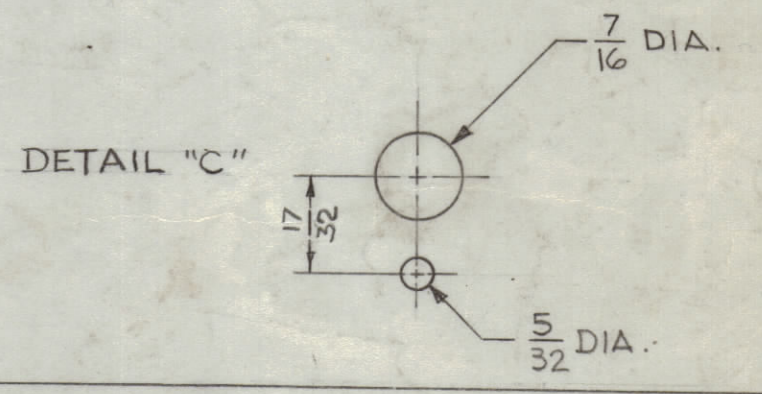


REVISIONS							
ZONE	SYM	DESCRIPTION	DATE	E.M.N. NO.	DRAFT	CHKD	APPD
G, D2	A	(A) HOLES WERE .161-.164 DIA; IT(1) NT129-440-4 DELETED	2-1-65	13380			
G, B2	A	(2) "B" HOLES ADDED (WERE "A" HOLES) IT(1) NT129-440-4 DELETED	11/2/65	15018			
E4	B	"F" HOLE ADDED					



HOLE	DESCRIPTION	REQ.
A	DELETED	→
B	.194 - .191 DIA.	7
C	SEE DETAIL	8
D	.213 DIA. C'SK 90° TO .265 DIA.	4
E	3/4 DIA.	1
F	11/64 DIA.	13
G	SEE DETAIL	1
H	SEE DETAIL	2
J	3/64 DIA.	2



MS-3565 B

- UNLESS OTHERWISE SPECIFIED:
1. USE MATERIAL THICKNESS FOR MAXIMUM RADIUS ON ALL BENDS.
 2. ALL ANGULAR BENDS 90°.
 3. REMOVE ALL BURRS AND SHARP EDGES.
 4. MOUNT INSERTS AFTER FINISHING.

NOTES

Q'TY./UNIT	MODEL USED ON	ASS'Y. NO.
1	MSA-1	A-3404

SCALE 1:2

CODE A

THE CONTENTS OF THIS DRAWING ARE THE EXCLUSIVE PROPERTY OF THE TECHNICAL MATERIEL CORP. ITS UNAUTHORIZED USE OR REPRODUCTION IN WHOLE OR IN PART IS STRICTLY FORBIDDEN.

REQ'D.	ITEM	PART NUMBER	DESCRIPTION	SYMBOL
4	3	SM-107-23	INSERT, HEX	D
→	2	DELETED	→	→
9	1	NT-129-632-4	NUT, ROUND, SWAGE TYPE	B

T. AALTONEN LIST OF MATERIAL

MATERIAL .064 THK. ALUMINUM 5052-H32

FINISH 5404-IRIDITE 14-2-AL COAT

THE TECHNICAL MATERIEL CORP. MAMARONECK, NEW YORK

TITLE CHASSIS, ELECTRICAL, FRONT

DRAWN GDL DATE 8-15-63

CHECKED DATE 8-12-64

ELECT. DES. DATE 12/6/63

MECH. DES. DATE 3-12-64

MS-3565 B

FINAL APPROVAL DATE 1/20/64

SHEET

REV. LTR.