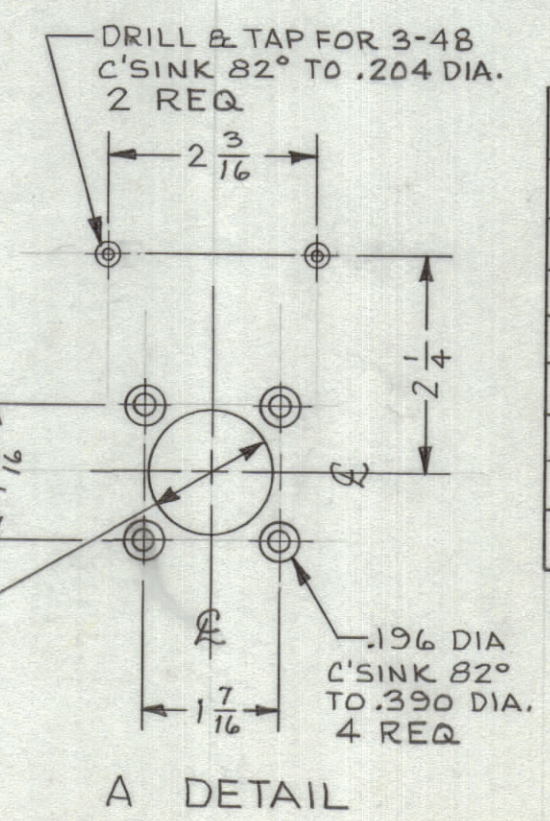
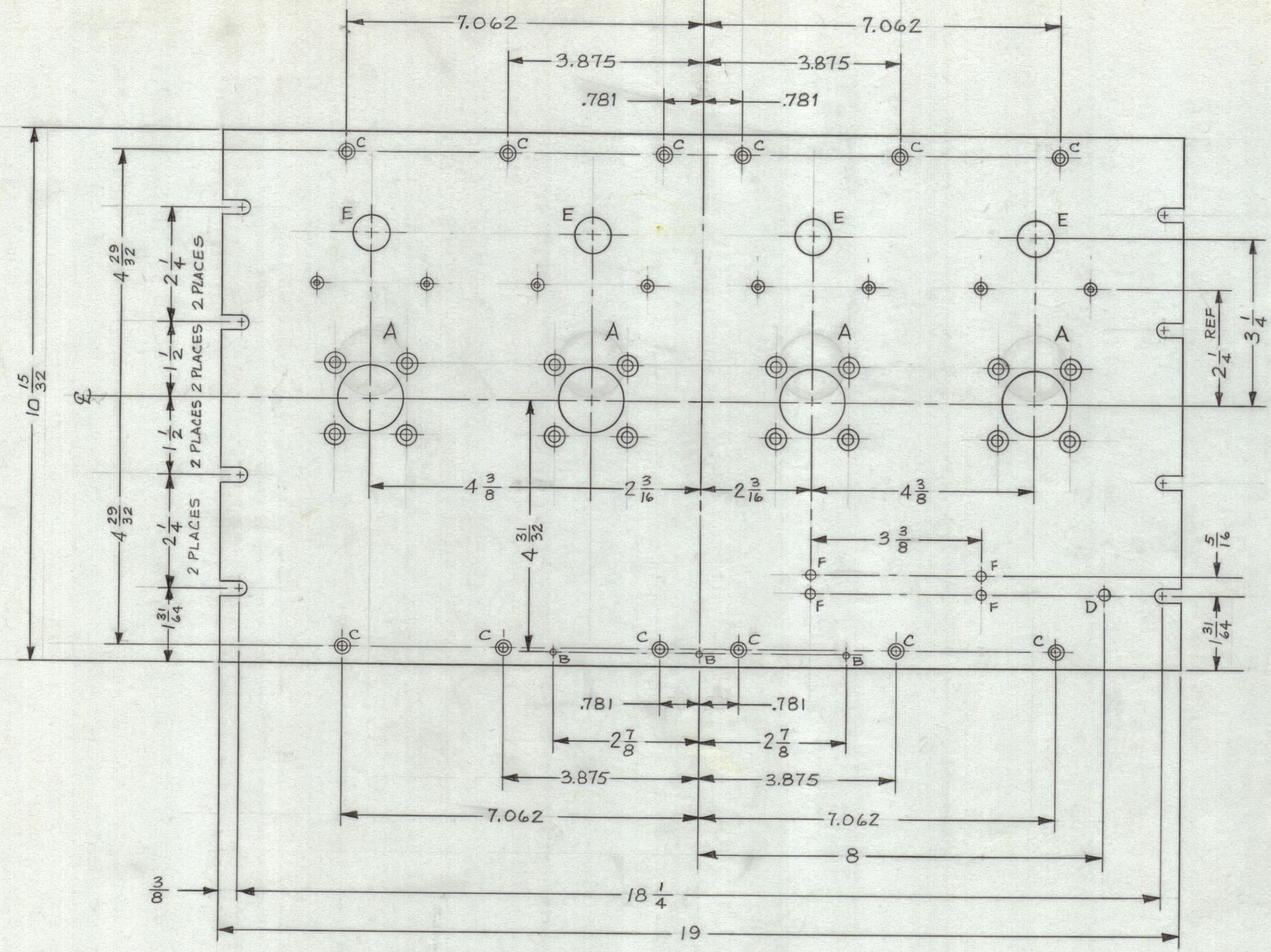


REVISIONS						
ZONE	SYM	DESCRIPTION	DATE	E.M.N. NO.	DRAFT	CHKD APPD



HOLE	DESCRIPTION	REQ
A	SEE DETAIL	4
B	.078 DIA	3
C	.144 DIA. C'SINK 82° TO .284 DIA	12
D	13/64 DIA	1
E	11/16 DIA.	4
F	.144 DIA.	4

- NOTES:
- MACHINING -
- 1- LATERAL BOW OF PANEL MUST BE KEPT TO .031 TOL.
  - 2- MILL ALL EDGES.
  - 3- HOLES MUST BE DRILLED.
  - 4- ALL THREADED HOLES & HOLE DIA. MUST BE HELD AFTER FINISHING.
  - 5- PANEL MUST BE FREE OF ALL MACHINING MARKS, GOUGES AND SCRATCHES. IF NECESSARY SAND FRONT WITH NO. 120 GRIT SAND-PAPER.

- FINISH-
- S404 - YELLOW IRIDITE
  - S114 - ZINC CHROMATE PRIMER
  - S115 - TMC SMOOTH GRAY ENAMEL
- OR
- PRIME & PAINT PER CUSTOMER
- FRONT & EDGES ONLY

REQ'D.	ITEM	PART NUMBER	DESCRIPTION	SYMBOL
MARTINENGO LIST OF MATERIAL				
MATERIAL ALUMINUM 3/16 2024 - T3			THE TECHNICAL MATERIEL CORP. MAMARONECK, NEW YORK	
FINISH SEE NOTES			TITLE PANEL, FRONT	
UNLESS OTHERWISE SPECIFIED DIMENSIONS ARE IN INCHES AND INCLUDE CHEMICALLY APPLIED OR PLATED FINISHES		DRAWN M TANTILLO	DATE 10-23-63	FINAL APPROVAL <i>BP</i>
DECIMALS .X ± .05 .XX ± .01 .XXX ± .005		TOLERANCES	FRACTIONS ± 1/64 ANGLES ± 0° 30'	DATE 10-27-63
THE CONTENTS OF THIS DRAWING ARE THE EXCLUSIVE PROPERTY OF THE TECHNICAL MATERIEL CORP. ITS UNAUTHORIZED USE OR REPRODUCTION IN WHOLE OR IN PART IS STRICTLY FORBIDDEN.		MECH. DES. <i>dm</i>		DATE 10-27-63
NOTES		MS-3569		REV. LTR.

MS-3569