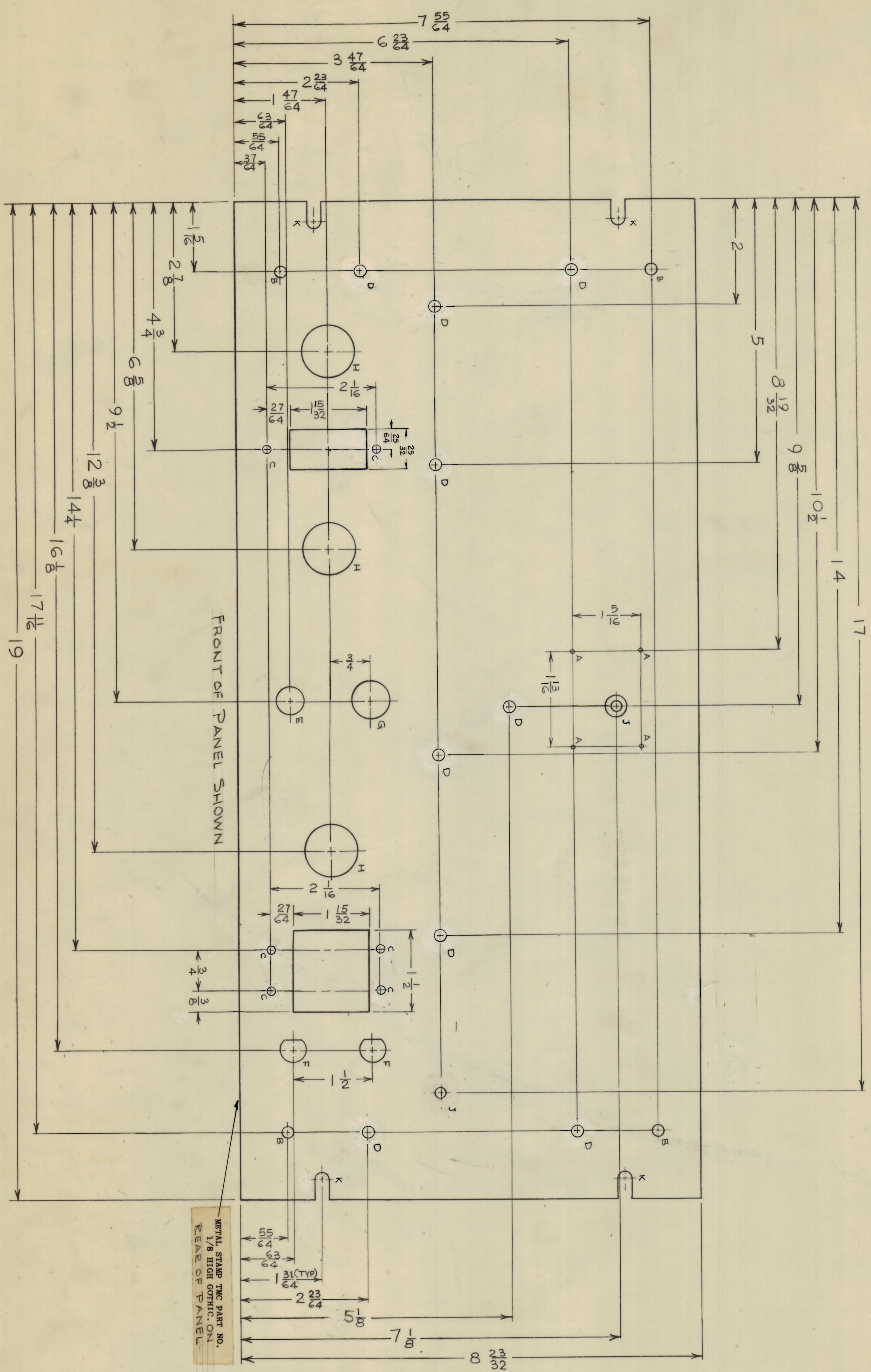
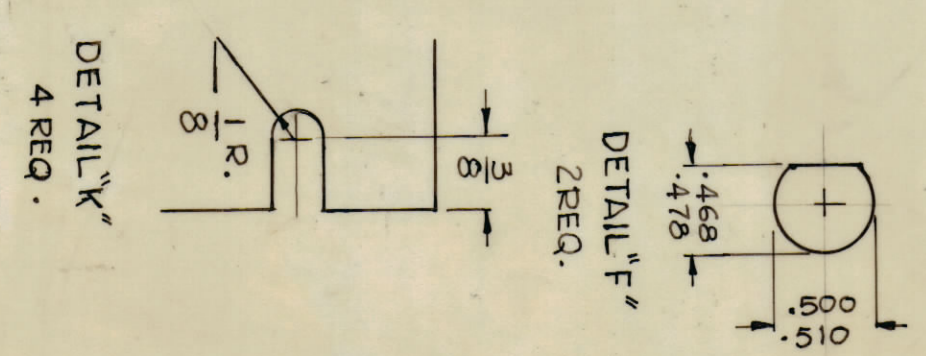


REV	DATE	BY	CHK	APP
A	1967			

REV	DATE	DESCRIPTION	BY	CHK	APP
A	1967	REVISED TO SHOW DIMENSIONS AND TOLERANCES			



HOLE	DIMENSION	REQ
A	.078 DIA.	4
B	.2187 DIA.	4
C	.144 DIA.	6
D	.196 DIA.	9
E	.4844 DIA.	1
F	SEE DETAIL 'F'	2
G	.6875 DIA.	1
H	1.000 DIA.	3
J	.15625 DIA. CSINK .8270.350DIA	1
K	SEE DETAIL 'K'	4



FINISH NOTES:

- S404 - IRIDITE 14-2 AL-COAT.
- S114 - ZINC CHROMATE PRIMER FRONT AND
- S115 - SMOOTH GRAY ENAMEL) EDGES ONLY

MACHINING:

- MILL ALL EDGES.
- HOLES MUST BE DRILLED, UNLESS OTHERWISE SPECIFIED.
- LATERAL BOW OF PANEL MUST BE KEPT TO .031 TOLERANCE.
- PANEL MUST BE FREE OF ALL MACHINING MARKS, GOUGES AND SCRATCHES. IF NECESSARY, SAND FRONT OF PANEL WITH NO. 120 GRIT SANDPAPER.

REF: LD 1407 - PSP 350
LD10197 - PSP 500

3/16 THICK
ALUMINUM
2024 T3
G.D.L.

PS-P-500	PAL-500	10-11-63	MS-3595	A
PSP-350A	PAL-350A			

FORM-120
TOLERANCES
ALL DIMENSIONS
UNLESS OTHERWISE SPECIFIED
ARE IN INCHES
DECIMALS
FRACTIONS
AND ANGLES
TOLERANCES ARE NOT INDICATED