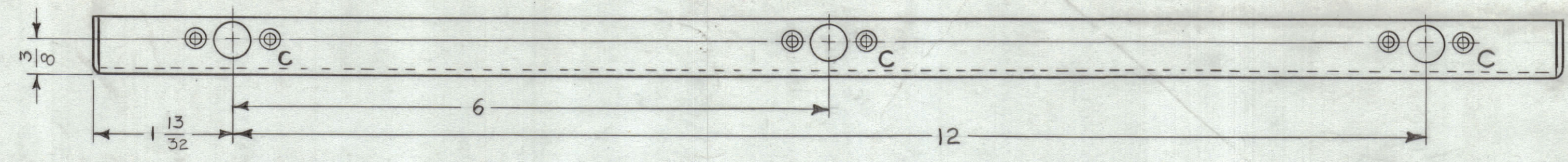
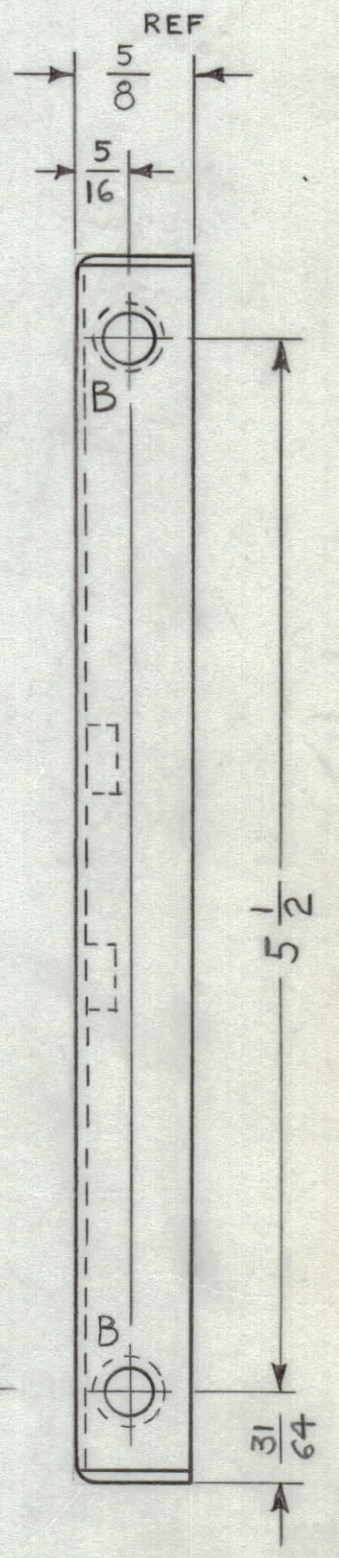
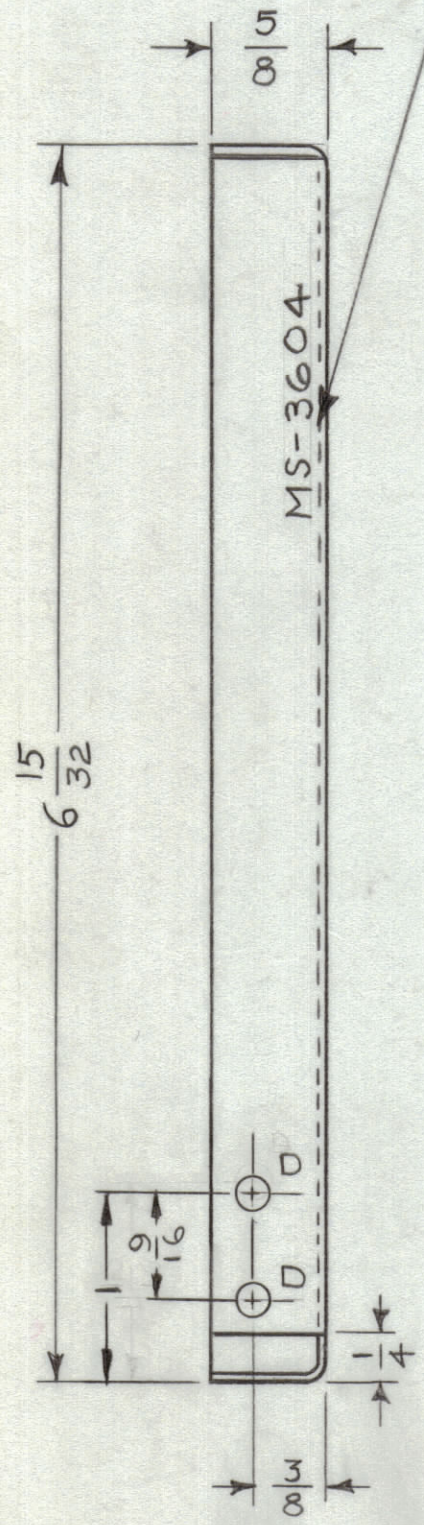
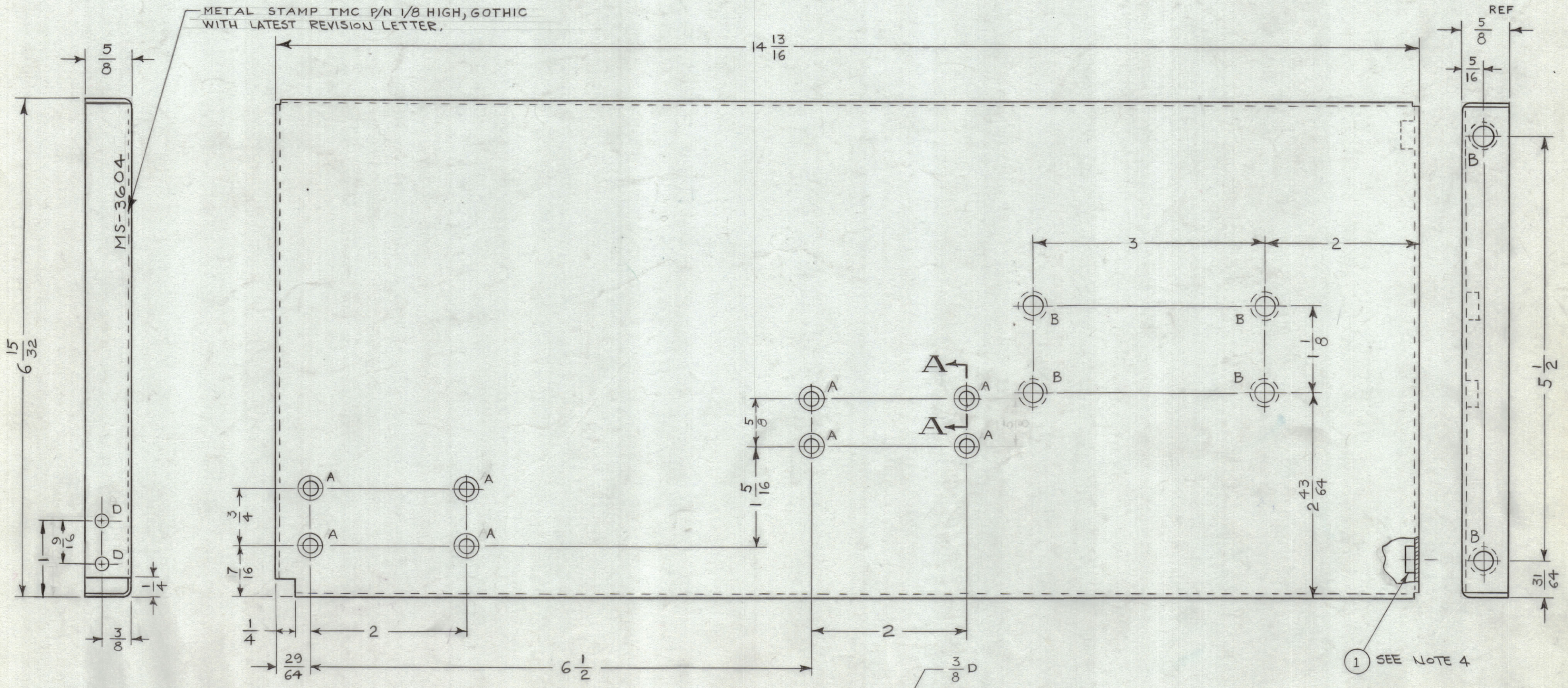


REVISIONS							
ZONE	SYM	DESCRIPTION	DATE	E.M.N. NO.	DRAFT	CHKD	APPD
CT	X1	1" DIM. WAS 13/16; ADDED 9/16 DIM; "D" HOLE QTY WAS (1).	4/6/64	1	JL		
#	Q	ORIGINAL RELEASE FOR PRODUCTION	7-27-64				

OPPOSITE SIDE IDENTICAL

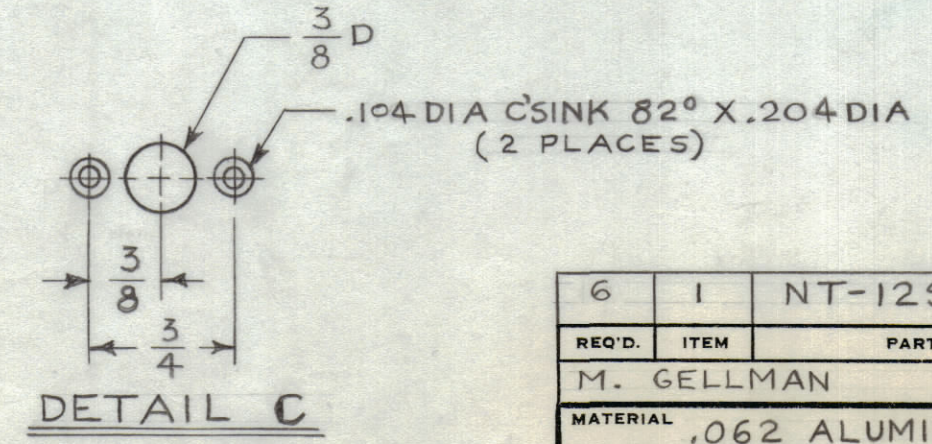
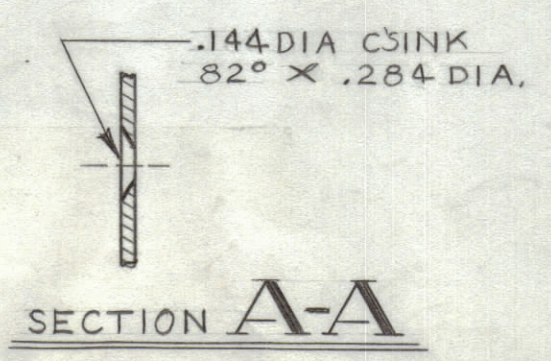


METAL STAMP TMC P/N 1/8 HIGH, GOTHIC WITH LATEST REVISION LETTER.



LEGEND		
HOLE	DESCRIPTION	REQD
A	SEE SECTION A-A	8
B	.250-.253 DIA	6
C	SEE DETAIL	6
D	3/16 DIA	2

- UNLESS OTHERWISE SPECIFIED:
1. USE MATERIAL THICKNESS FOR MAXIMUM RADIUS ON ALL BENDS.
 2. ALL ANGULAR BENDS 90°.
 3. REMOVE ALL BURRS AND SHARP EDGES.
 4. MOUNT INSERTS AFTER FINISHING.



REQ'D	ITEM	PART NUMBER	DESCRIPTION	SYMBOL
6	1	NT-129-1032-4	NUT, ROUND, SWAGE TYPE	B

M. GELLMAN LIST OF MATERIAL

MATERIAL .062 ALUMINUM 5052-H32	THE TECHNICAL MATERIEL CORP. MAMARONECK, NEW YORK		
FINISH YEL IRIDITE PER S404	TITLE PLATE, SIDE-LEFT		

DRAWN <i>M. Peters</i>	DATE 8-15-63	FINAL APPROVAL <i>RCL</i>	DATE
CHECKED <i>@</i>	DATE 7-27-64	DATE	
ELECT. DES. <i>MS</i>	DATE	MS-3604	
MECH. DES. <i>M. Gellman</i>	DATE 7-27-64	SHEET	REV. LTR.

1	LFS-1	
Q'TY./UNIT	MODEL USED ON	ASS'Y. NO.
SCALE 1:1	CODE A	

THE CONTENTS OF THIS DRAWING ARE THE EXCLUSIVE PROPERTY OF THE TECHNICAL MATERIEL CORP. ITS UNAUTHORIZED USE OR REPRODUCTION IN WHOLE OR IN PART IS STRICTLY FORBIDDEN.

NOTES