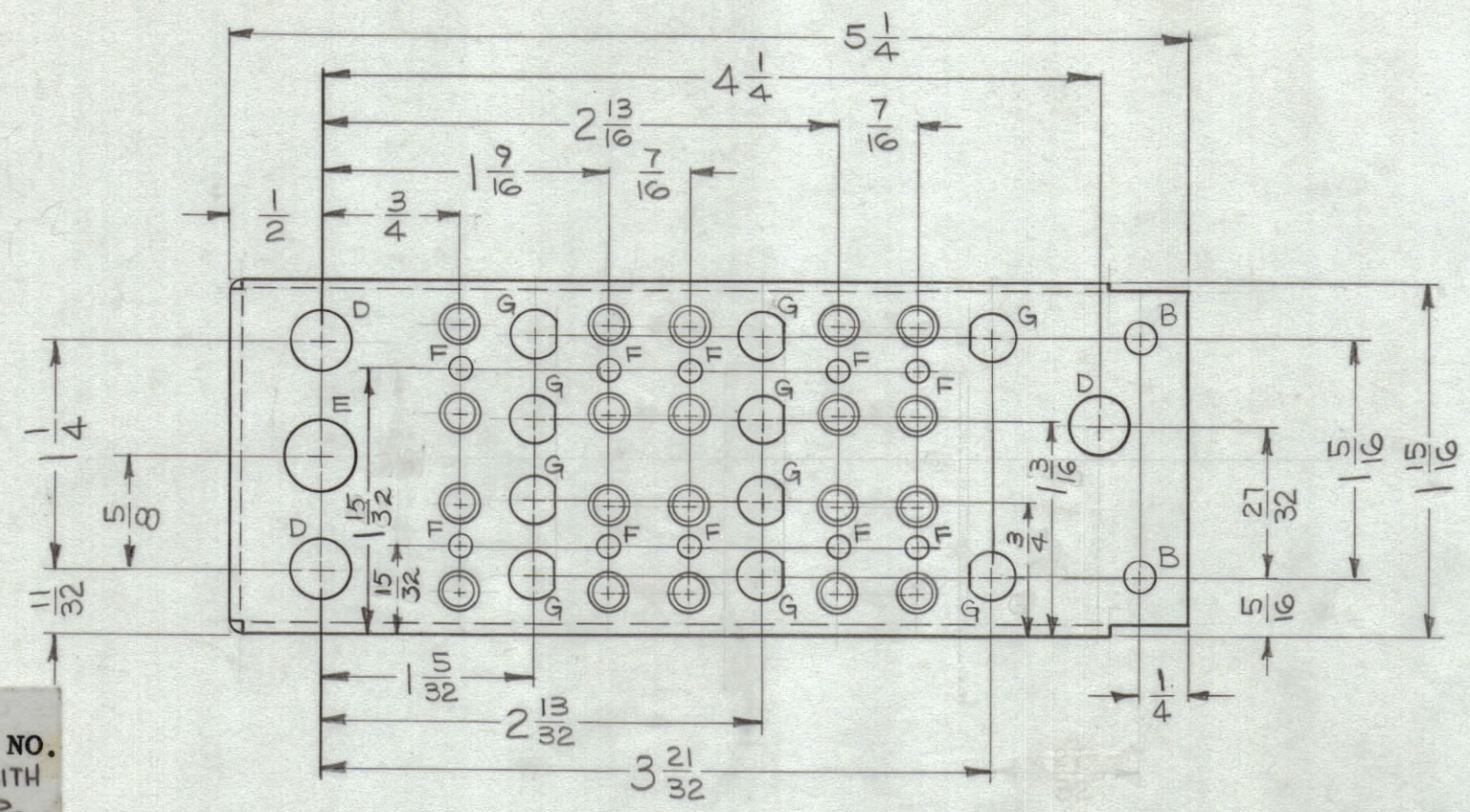
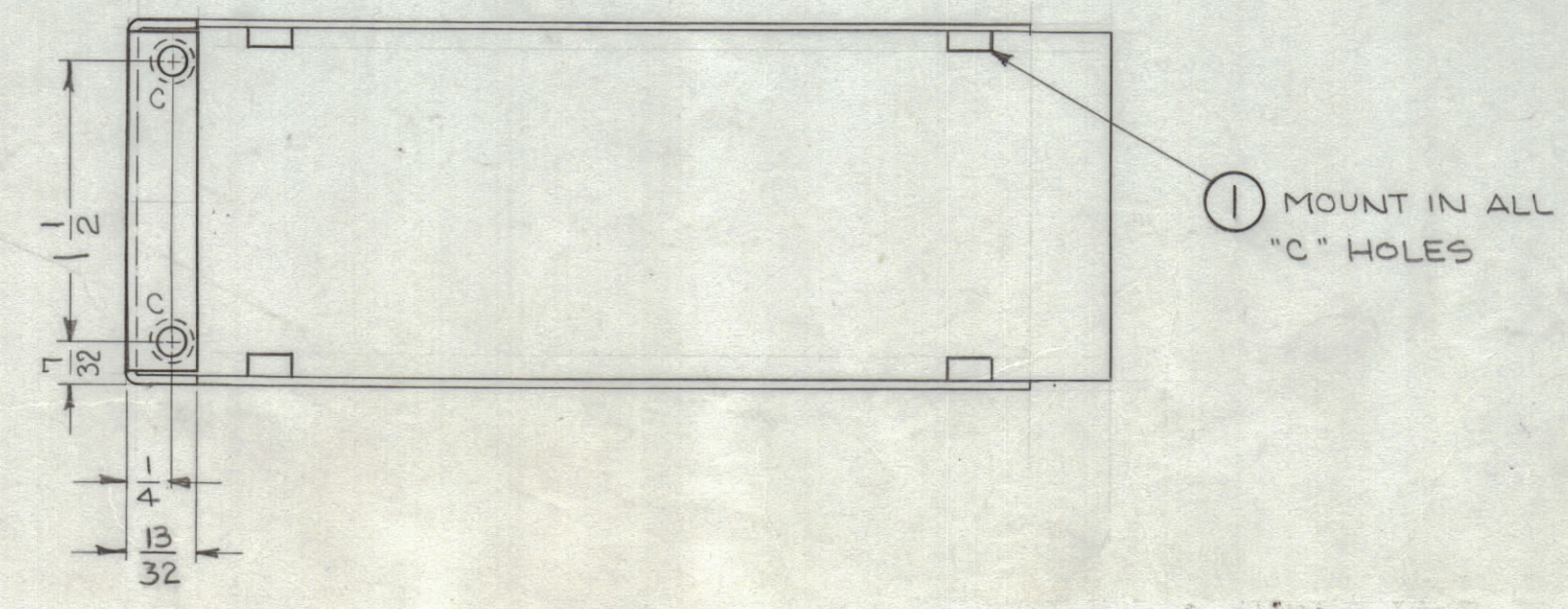
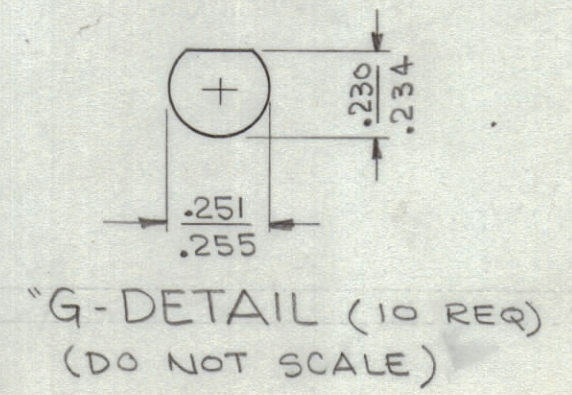
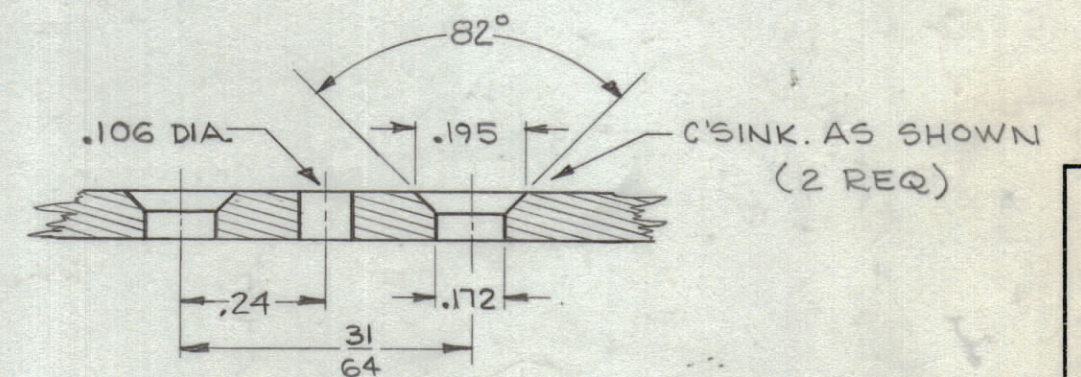
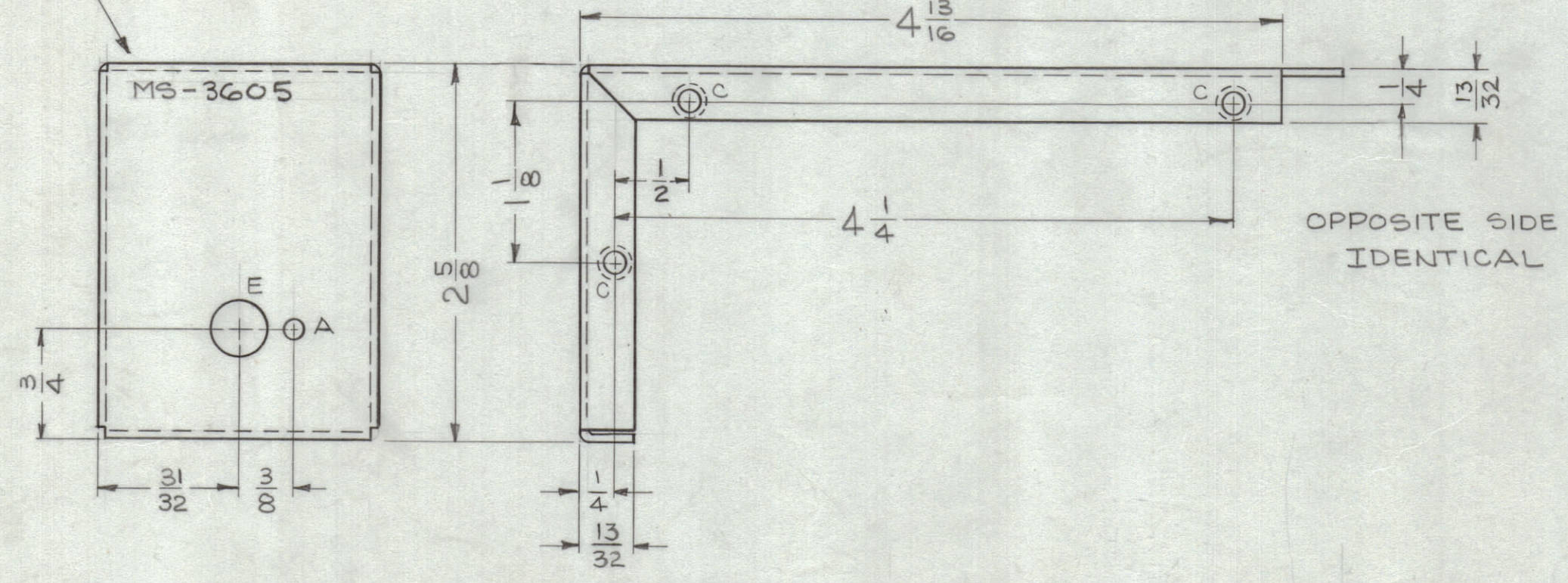


ZONE		SYM	DESCRIPTION	DATE	E.M.N. NO.	DRAFT	CHKD	APPD
#	Ø		ORIGINAL RELEASE FOR PRODUCTION	7-27-64	Ø			



LEGEND		
HOLE	DESCRIPTION	REQ.
A	9/64 DIA.	1
B	5/32 DIA.	2
C	.161 - .164 DIA.	8
D	5/16 DIA.	3
E	3/8 DIA.	2
F	SEE DETAIL	10
G	SEE DETAIL	10

METAL STAMP TMC PART NO. 1/8 HIGH GOTHIC, WITH LATEST REVISION LETTER.



- UNLESS OTHERWISE SPECIFIED:
1. USE MATERIAL THICKNESS FOR MAXIMUM RADIUS ON ALL BENDS.
  2. ALL ANGULAR BENDS 90°.
  3. REMOVE ALL BURRS AND SHARP EDGES.
  4. MOUNT INSERTS AFTER FINISHING.
- NOTES

5	LFS-1	
Q'TY./UNIT	MODEL USED ON	ASS'Y. NO.
SCALE 1:1 & AS NOTED	CODE A	
THE CONTENTS OF THIS DRAWING ARE THE EXCLUSIVE PROPERTY OF THE TECHNICAL MATERIEL CORP. ITS UNAUTHORIZED USE OR REPRODUCTION IN WHOLE OR IN PART IS STRICTLY FORBIDDEN.		

REF: LD-1416

8	1	NT-129-0440-3	NUT, ROUND, SWAGE TYPE	C
REQ'D.	ITEM	PART NUMBER	DESCRIPTION	SYMBOL
M. GELLMAN LIST OF MATERIAL				
MATERIAL		THE TECHNICAL MATERIEL CORP. MAMARONECK, NEW YORK		
.040, ALUMINUM 5052-H32		TITLE CHASSIS, ELECTRICAL (SPECTRUM FILTER)		
FINISH 3404 - YEL. IRIDITE		DRAWN [Signature] DATE 8-27-63		
UNLESS OTHERWISE SPECIFIED DIMENSIONS ARE IN INCHES AND INCLUDE CHEMICALLY APPLIED OR PLATED FINISHES		CHECKED [Signature] DATE 7-27-64		
DECIMALS X ± .05 XX ± .01 .XXX ± .005		ELECT. DES. [Signature] DATE 7-28-64		
FRACTIONS ± 1/64 ANGLES ± 0° 30'		MECH. DES. [Signature] DATE 7-28-64		
TOLERANCES		REVISIONS MS-3605 Ø		
		SHEET		

MS-3605 Ø