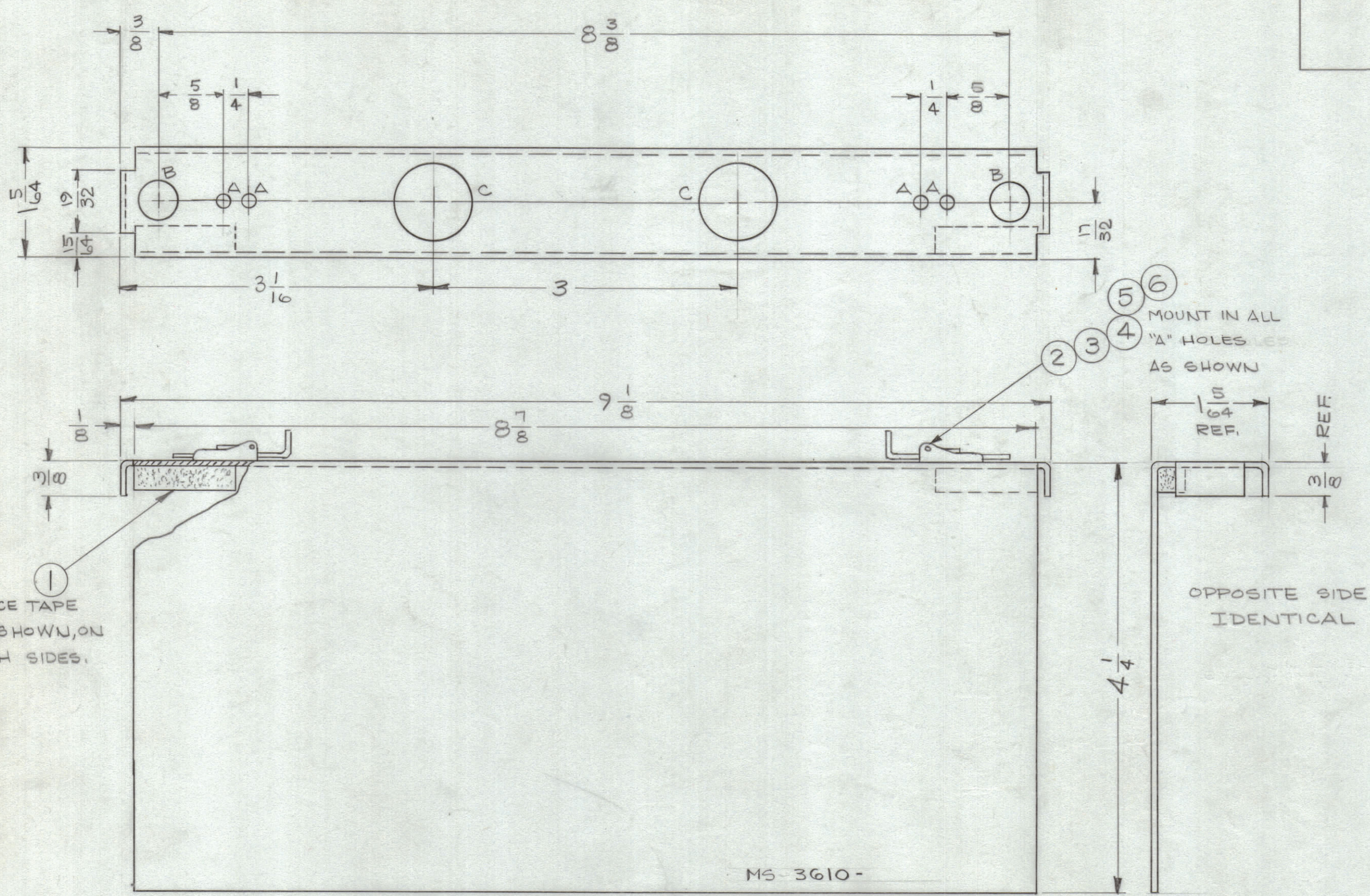


REVISIONS							
ZONE	SYM	DESCRIPTION	DATE	E.M.N. NO.	DRAFT	CHKD	APPD
B2	X1	ITEM (G) ADDED	2/24/64	1	ES	HK	WJ
	X2	DWG TITLE WAS COVER-FRAME, MTG; ADDED AX-470 UP TO AX-474.	4/9/64	2	JL	ME	
-		ORIGINAL RELEASE FOR PRODUCTION	7.30.64	-	HTB		



LEGEND		
HOLE	DESCRIPTION	REQ
A	.128 DIA	4
B	3/8 DIA	2
C	3/4 DIA	2

1
PLACE TAPE AS SHOWN, ON BOTH SIDES.

2 3 4 5 6
MOUNT IN ALL "A" HOLES AS SHOWN

OPPOSITE SIDE IDENTICAL

MS-3610-

METAL STAMP TMC PART NO. 1/8 HIGH GOTHIC, WITH LATEST REV. LETTER.

MS-3610

UNLESS OTHERWISE SPECIFIED:

1. USE MATERIAL THICKNESS FOR MAXIMUM RADIUS ON ALL BENDS.
2. ALL ANGULAR BENDS 90°.
3. REMOVE ALL BURRS AND SHARP EDGES.
4. MOUNT INSERTS AFTER FINISHING.

NOTES

Q'TY./UNIT	MODEL USED ON	ASSY. NO.
1	LFS-1	AX-474
4		AX-473
5		AX-472
1		AX-471
1	LFS-1	AX-470

REQ'D.	ITEM	PART NUMBER	DESCRIPTION	SYMBOL
2	6	FW06HBN	WASHER, FLAT	A
2	5	FS 119-3	LATCHGUIDE, SNAPSLIDE FASTENER	A
2	4	FS 118-2	LATCH, SNAPSLIDE FASTENER	A
2	3	WA 131-23	WASHER, SPRING	A
2	2	FS 120-2	POST, SNAPSLIDE FASTENER	A
2	1	TA 111-2-2-1-G	TAPE, URETHANE	

M.GELLMAN		LIST OF MATERIAL	
MATERIAL		THE TECHNICAL MATERIEL CORP.	
.032, ALUMINUM 5052-H32		MAMARONECK, NEW YORK	
FINISH		TITLE	
S404-YELLOW IRIDITE		COVER, TOP-MOUNTING FRAME	
DRAWN	DATE	FINAL APPROVAL	DATE
G. Jensen	8-13-63	KAL	
CHECKED	DATE		
ELECT. DES.	DATE		
MECH. DES.	DATE		
	7-29-64		

THE CONTENTS OF THIS DRAWING ARE THE EXCLUSIVE PROPERTY OF THE TECHNICAL MATERIEL CORP. ITS UNAUTHORIZED USE OR REPRODUCTION IN WHOLE OR IN PART IS STRICTLY FORBIDDEN.

UNLESS OTHERWISE SPECIFIED DIMENSIONS ARE IN INCHES AND INCLUDE CHEMICALLY APPLIED OR PLATED FINISHES

DECIMALS: .X ± .05, .XX ± .01, .XXX ± .005
 FRACTIONS: ± 1/64
 ANGLES: ± 0° 30'

TOLERANCES