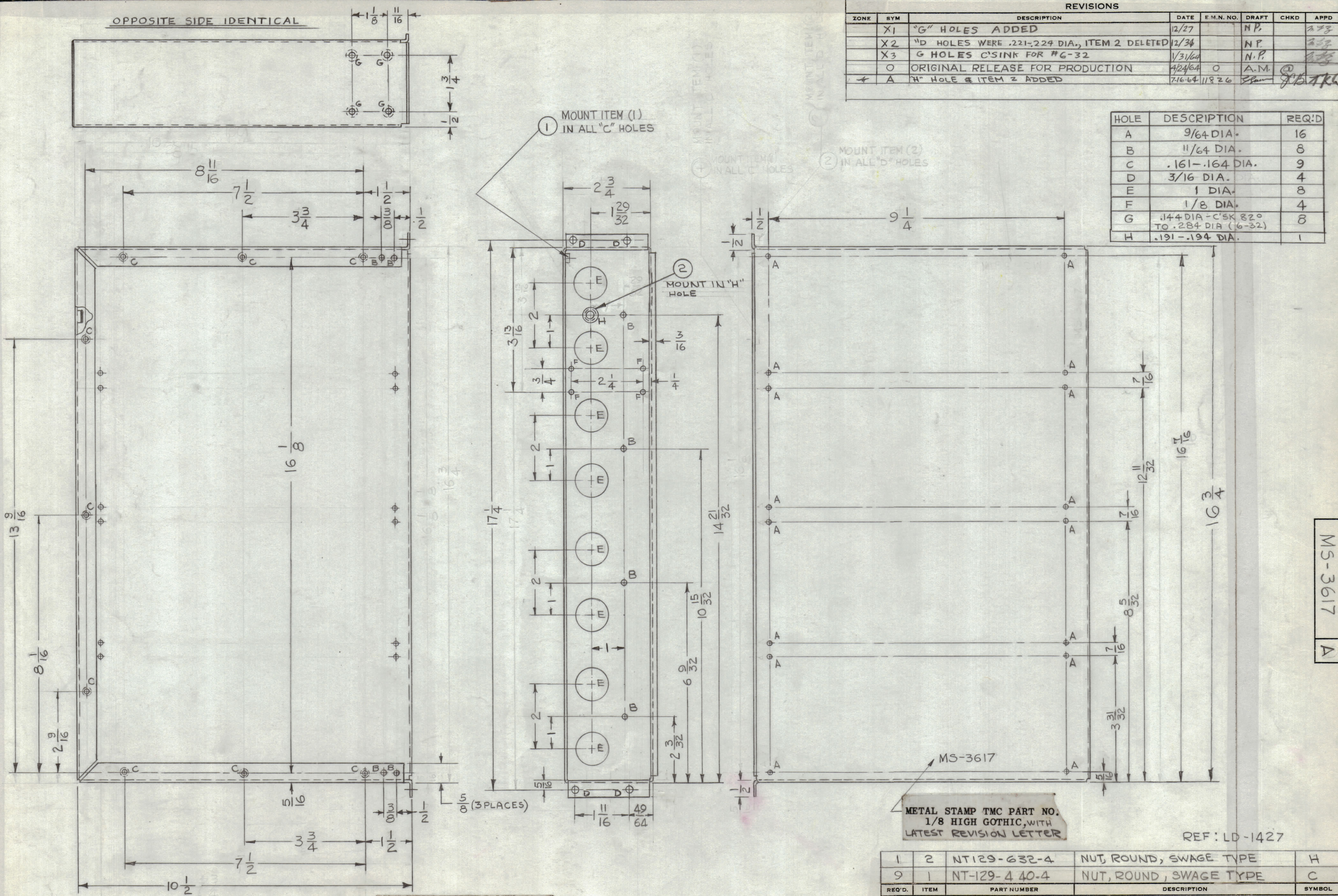


OPPOSITE SIDE IDENTICAL

REVISIONS							
ZONE	SYM	DESCRIPTION	DATE	E.M.N. NO.	DRAFT	CHKD	APPD
	X1	"G" HOLES ADDED	12/27		N.P.		273
	X2	"D" HOLES WERE .221-.224 DIA., ITEM 2 DELETED	12/34		N.P.		273
	X3	G HOLES C'SINK FOR #6-32	1/31/64		N.P.		273
	O	ORIGINAL RELEASE FOR PRODUCTION	4/24/64	O	A.M.		
	A	"H" HOLE & ITEM 2 ADDED	7-16-64	11826			8/15/64

HOLE	DESCRIPTION	REQ'D
A	9/64 DIA.	16
B	11/64 DIA.	8
C	.161-.164 DIA.	9
D	3/16 DIA.	4
E	1 DIA.	8
F	1/8 DIA.	4
G	.144 DIA - C'SK 82° TO .284 DIA (6-32)	8
H	.191-.194 DIA.	1



- UNLESS OTHERWISE SPECIFIED:
- USE MATERIAL THICKNESS FOR MAXIMUM RADIUS ON ALL BENDS.
  - ALL ANGULAR BENDS 90°.
  - REMOVE ALL BURRS AND SHARP EDGES.
  - MOUNT INSERTS AFTER FINISHING.

NOTES

QTY./UNIT	MODEL USED ON	ASS'Y. NO.
SCALE	CODE	
1:2	A	

THE CONTENTS OF THIS DRAWING ARE THE EXCLUSIVE PROPERTY OF THE TECHNICAL MATERIEL CORP. ITS UNAUTHORIZED USE OR REPRODUCTION IN WHOLE OR IN PART IS STRICTLY FORBIDDEN.

METAL STAMP TMC PART NO. 1/8 HIGH GOTHIC, WITH LATEST REVISION LETTER

REF: LD-1427

REQ'D.	ITEM	PART NUMBER	DESCRIPTION	SYMBOL
1	2	NT129-632-4	NUT, ROUND, SWAGE TYPE	H
9	1	NT-129-440-4	NUT, ROUND, SWAGE TYPE	C

T. AALTONEN LIST OF MATERIAL

MATERIAL	THE TECHNICAL MATERIEL CORP. MAMARONECK, NEW YORK		
.062 THK. ALUMINUM 5052-H32	TITLE		
FINISH	CHASSIS, ELECTRICAL, MAIN		
≤ 404 YEL IRIDITE 14-2 AL COAT	DRAWN		
	G.D.L.	DATE	FINAL APPROVAL
		12-11-63	RAC
	DATE	DATE	DATE
	4-23-64	4/29/64	
	ELECT. DES.	DATE	
	MECH. DES.	DATE	
		MS-3617	

UNLESS OTHERWISE SPECIFIED DIMENSIONS ARE IN INCHES AND INCLUDE CHEMICALLY APPLIED OR PLATED FINISHES

DECIMALS	FRACTIONS
X ± .05	± 1/64
XX ± .01	ANGLES
XXX ± .005	± 0° 30'

MS-3617 A