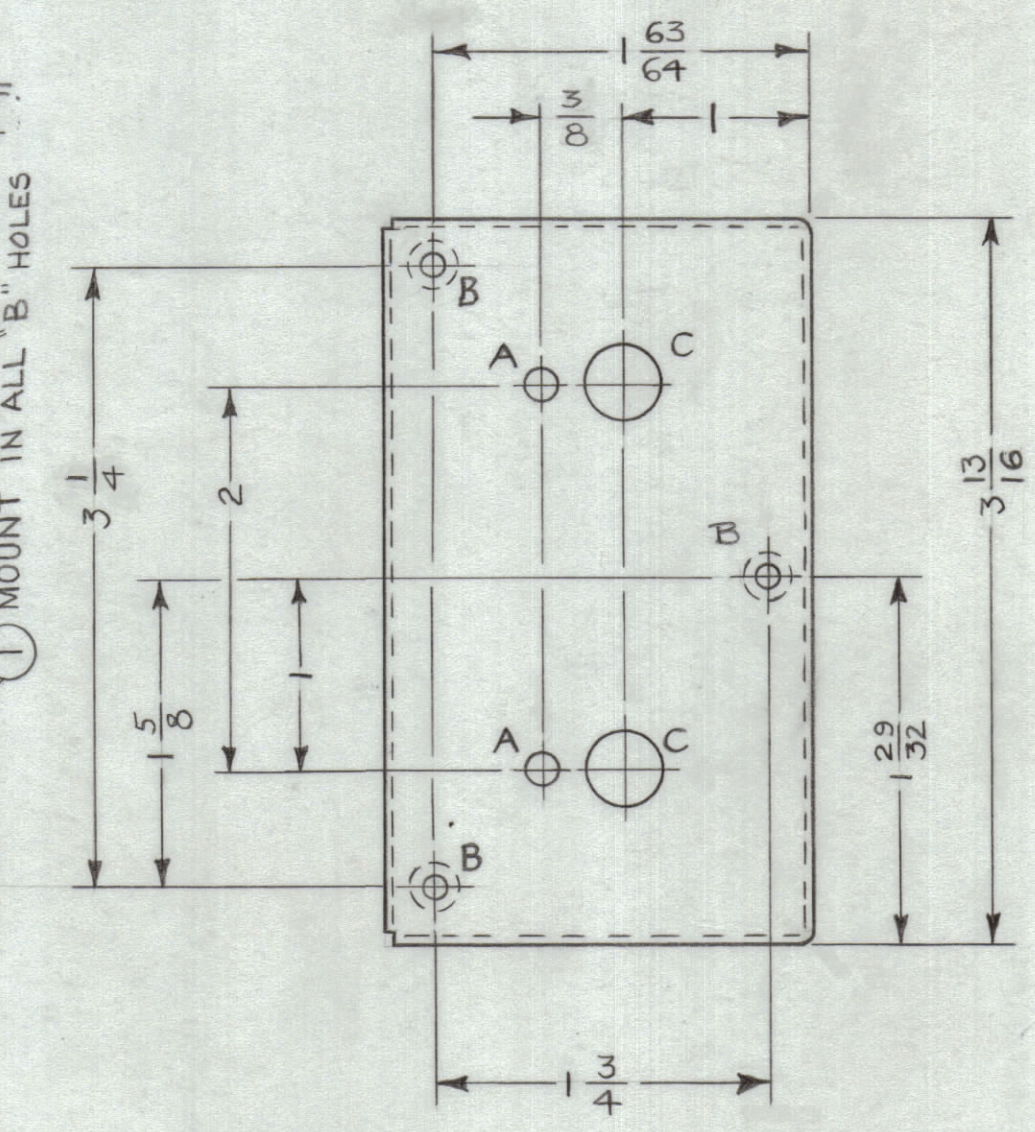
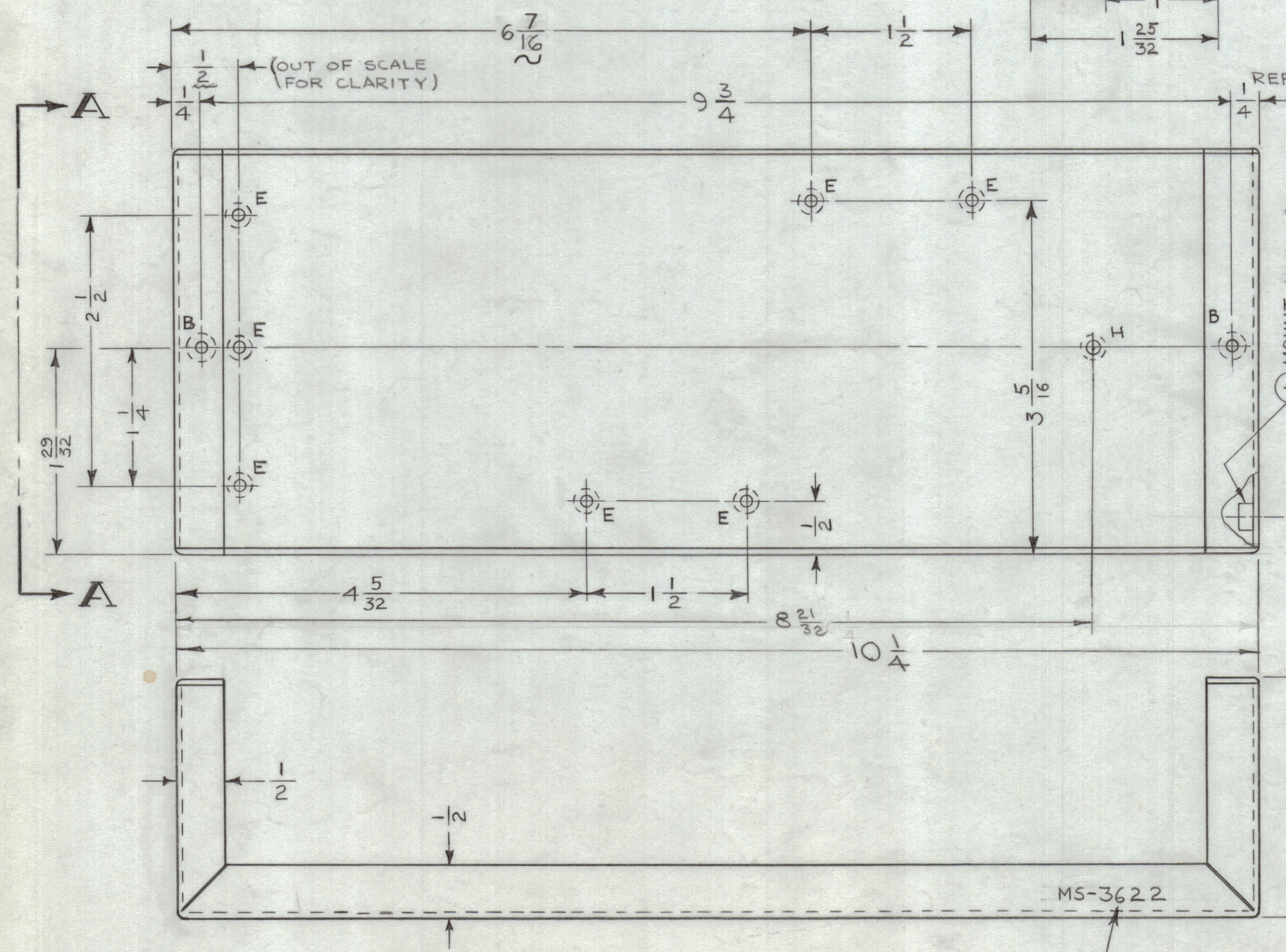
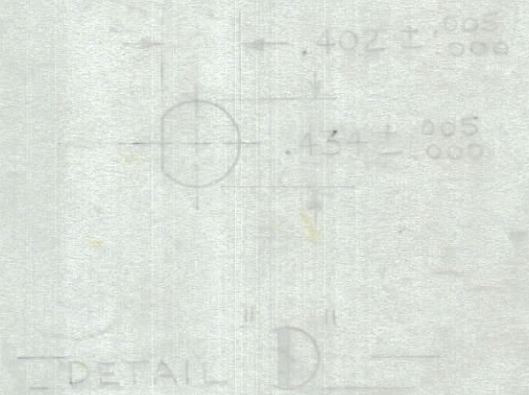
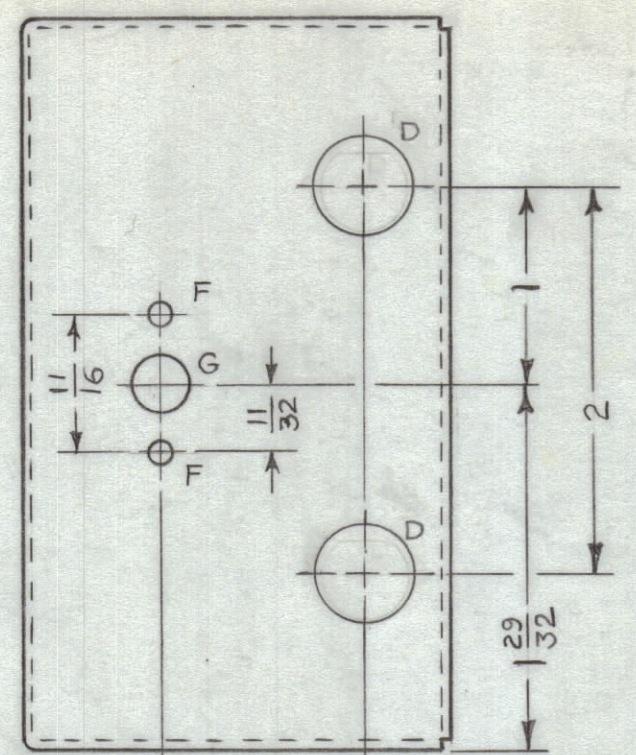


LEGEND		
HOLE	DESCRIPTION	REQD
A	5/32 DIA	2
B	.191-.194 DIA	5
C	13/32 DIA	2
D	33/64 DIA	2
E	.144 DIA - C'SINK 82° TO .284 DIA (6-32)	7
F	9/64 DIA	2
G	5/16 DIA	1
H	.120 DIA - C'SINK 82° TO .230 DIA (4-40)	1

REVISIONS							
ZONE	SYM	DESCRIPTION	DATE	E.M.N. NO.	DRAFT	CHKD	APPD
E4	X1	"H" HOLE ADDED	12/1/63	X1			
#	0	ORIGINAL RELEASE FOR PRODUCTION	4/24/64	0	AM	(a)	

VIEW A-A



1 MOUNT IN ALL "B" HOLES

MS-3622

REF: LD-1428

- UNLESS OTHERWISE SPECIFIED:
1. USE MATERIAL THICKNESS FOR MAXIMUM RADIUS ON ALL BENDS.
 2. ALL ANGULAR BENDS 90°.
 3. REMOVE ALL BURRS AND SHARP EDGES.
 4. MOUNT INSERTS AFTER FINISHING.

NOTES

METAL STAMP TMC PART NO.
1/8 HIGH GOTHIC.

4	MAF-1	
Q'TY./UNIT	MODEL USED ON	ASS'Y. NO.
SCALE	CODE	
1:1	A	

THE CONTENTS OF THIS DRAWING ARE THE EXCLUSIVE PROPERTY OF THE TECHNICAL MATERIEL CORP. ITS UNAUTHORIZED USE OR REPRODUCTION IN WHOLE OR IN PART IS STRICTLY FORBIDDEN.

5	1	NT-129-632-4	NUT, ROUND, SWAGE TYPE	B
REQ'D.	ITEM	PART NUMBER	DESCRIPTION	SYMBOL
AALTONEN LIST OF MATERIAL				
MATERIAL .062 THICK 5052-H32 ALUMINUM			THE TECHNICAL MATERIEL CORP. MAMARONECK, NEW YORK	
FINISH S404 YEL IRIDITE 14-2 AL COAT			TITLE CHASSIS, ELECTRICAL, MAIN MODULE	
DRAWN	DATE	FINAL APPROVAL	DATE	
Checked	11/12/63		4/29/64	
DATE	4-23-64			
ELECT. DES.	DATE	MS-3622		
MECH. DES.	DATE			
	1/29/64			
SHEET				REV. LTR.

MS-3622 0