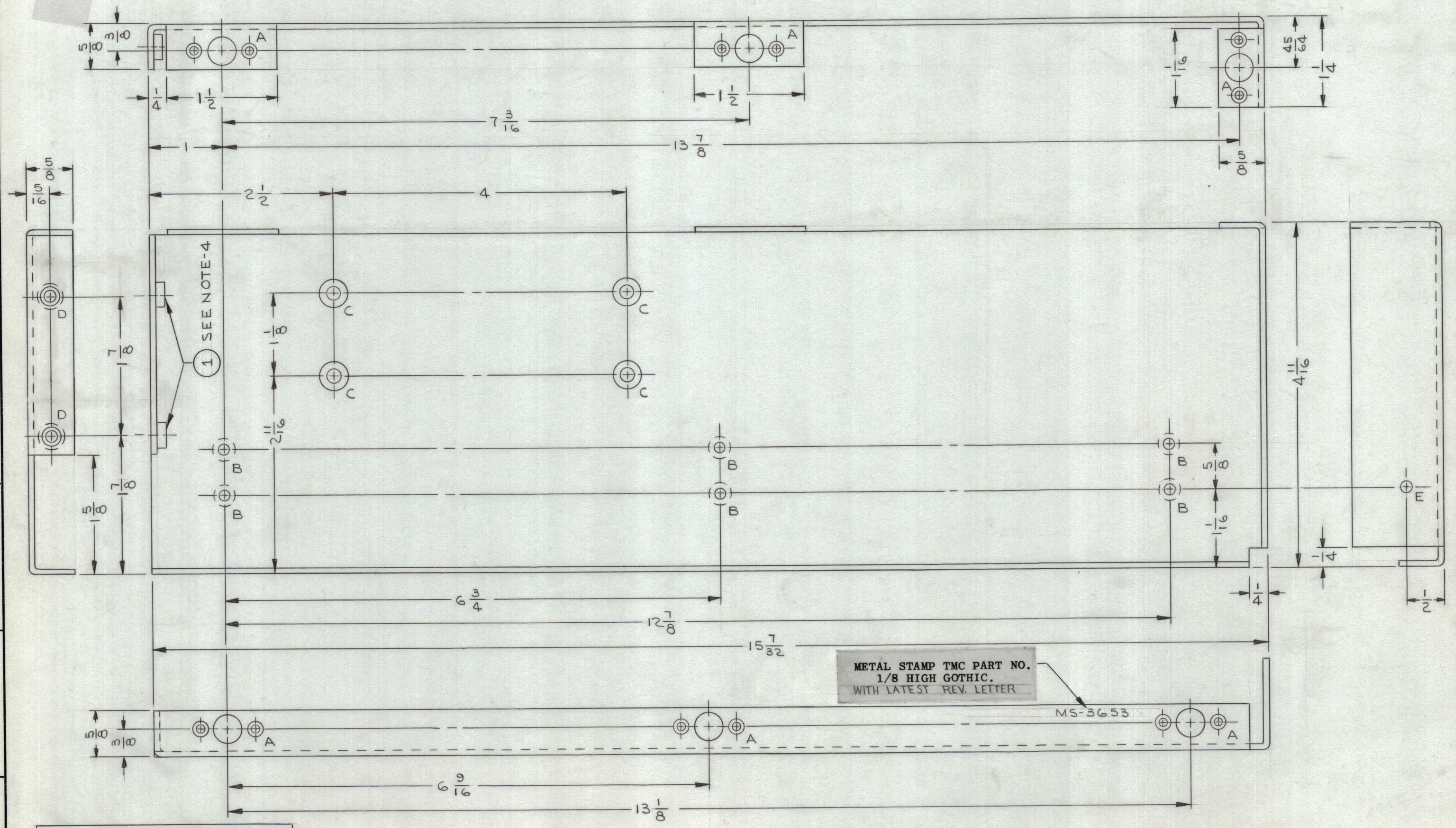


		REVISIONS					
ZONE	SYM	DESCRIPTION	DATE	E.M.N. NO.	DRAFT	CHKD	APPD
G4	XI	1/2 FLANGE WIDTH DIM. WAS 2 1/2	2/4/64	1	JL		
G7	Ø	ORIGINAL RELEASE FOR PRODUCTION	10-29-64	Ø	J.L.		

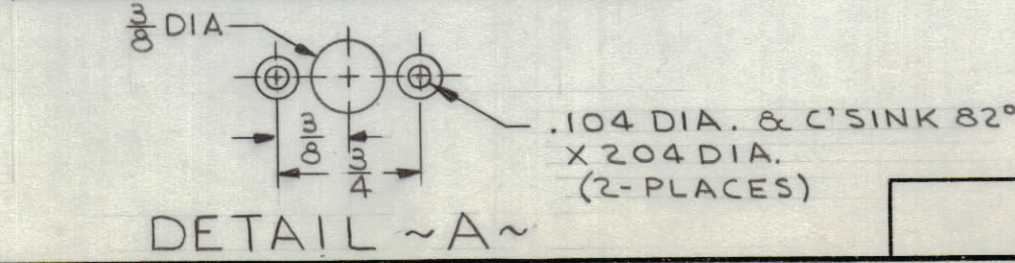


METAL STAMP TMC PART NO.
1/8 HIGH GOTHIC.
WITH LATEST REV. LETTER

MS-3653

HOLE LEGEND		
HOLE	DESCRIPTION	REQ'D
A	SEE DETAIL	6
B	.144 DIA. & C'SINK 82° X .284 DIA.	6
C	.196 DIA. & C'SINK 82° X .390 DIA.	4
D	.250 - .253 DIA.	2
E	5/32 DIA.	1

- UNLESS OTHERWISE SPECIFIED:
1. USE MATERIAL THICKNESS FOR MAXIMUM RADIUS ON ALL BENDS.
 2. ALL ANGULAR BENDS 90°.
 3. REMOVE ALL BURRS AND SHARP EDGES.
 4. MOUNT INSERTS AFTER FINISHING.



Q'TY./UNIT	MODEL USED ON	ASS'Y. NO.
1	BPS()-1	
SCALE	CODE	
1:1		

REQ'D.	ITEM	PART NUMBER	DESCRIPTION	SYMBOL
2	1	NT-129-1032-4	NUT, PLAIN SPLINE SE TYPE	

M. GELLMAN LIST OF MATERIAL

MATERIAL	.081 THK ALUMINUM 5052-H32	THE TECHNICAL MATERIEL CORP. MAMARONECK, NEW YORK
FINISH	YELLOW IRIDITE PER TMC SPEC S-404	

TITLE: PLATE, SIDE-LEFT

DRAWN	J. LESHINSKI	DATE	12/19/63	FINAL APPROVAL		DATE	
CHECKED	<i>A. Turan</i>	DATE	2/7/64				
ELECT. DES.		DATE					
MECH. DES.	<i>J.F.</i>	DATE	10-29-64				

UNLESS OTHERWISE SPECIFIED DIMENSIONS ARE IN INCHES AND INCLUDE CHEMICALLY APPLIED OR PLATED FINISHES

DECIMALS	FRACTIONS
.X ± .05	± 1/64
.XX ± .01	ANGLES
.XXX ± .005	± 0° 30'

TOLERANCES

THE CONTENTS OF THIS DRAWING ARE THE EXCLUSIVE PROPERTY OF THE TECHNICAL MATERIEL CORP. ITS UNAUTHORIZED USE OR REPRODUCTION IN WHOLE OR IN PART IS STRICTLY FORBIDDEN.

MS-3653

MS-3653