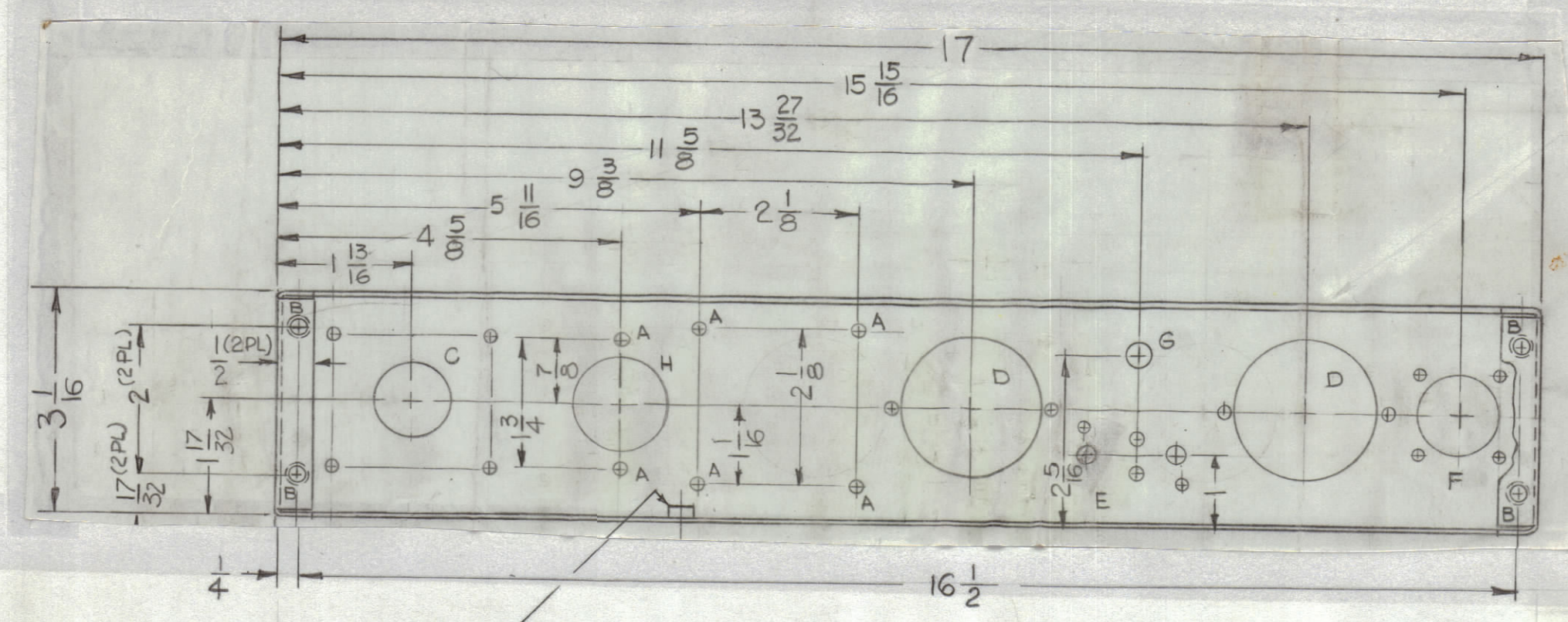
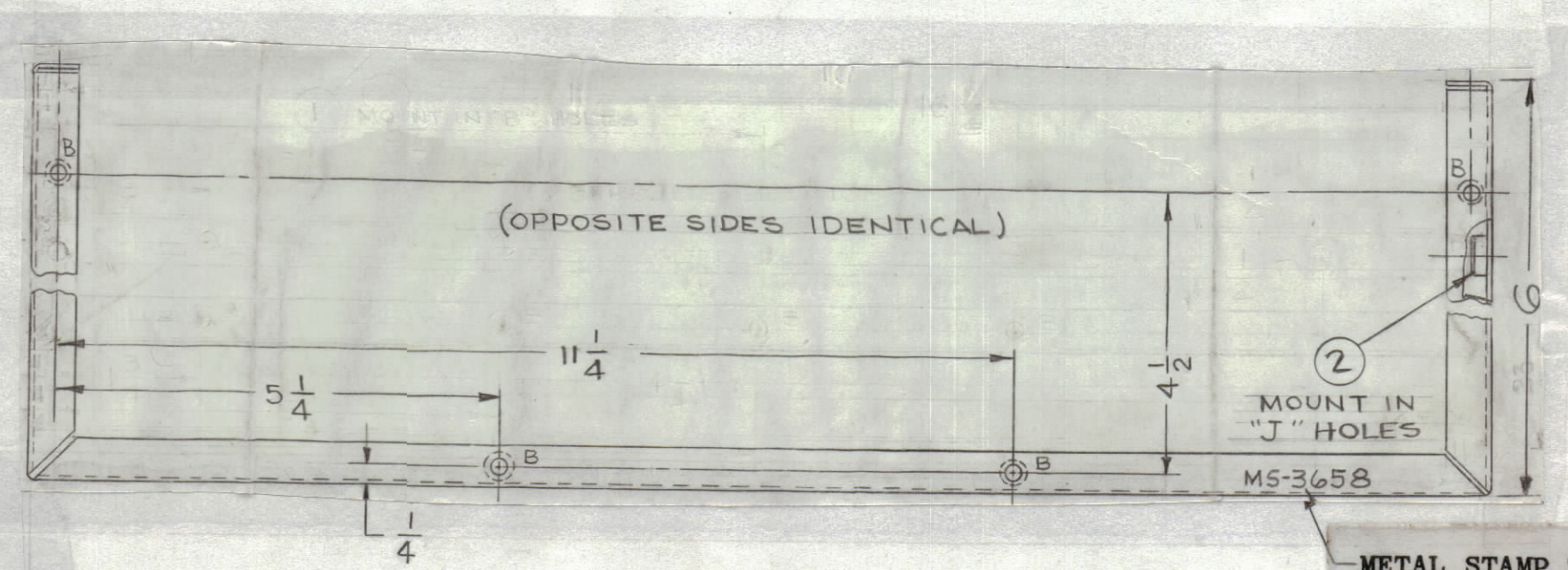
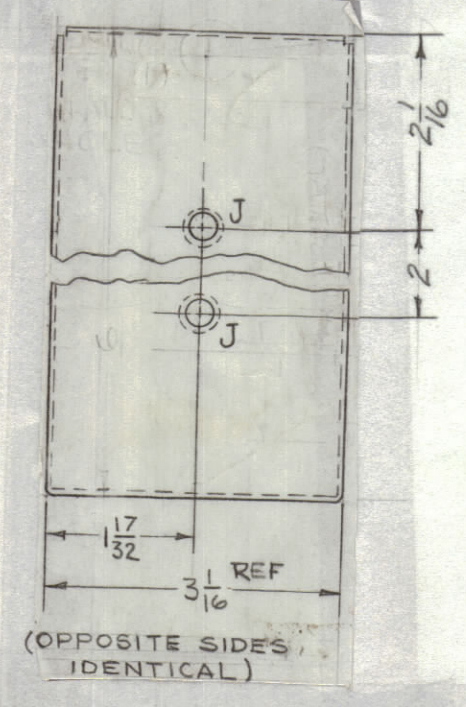
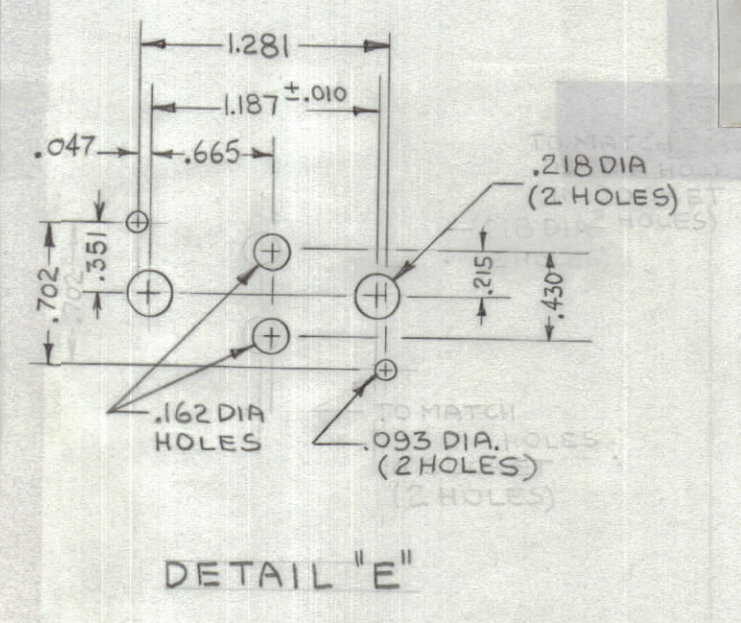
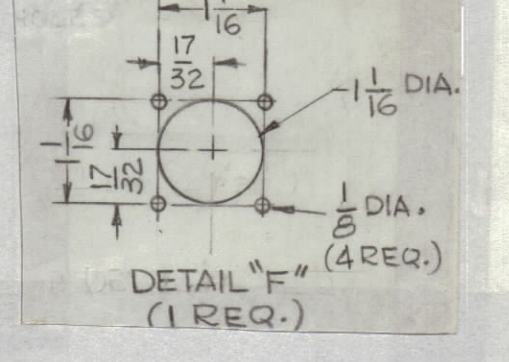
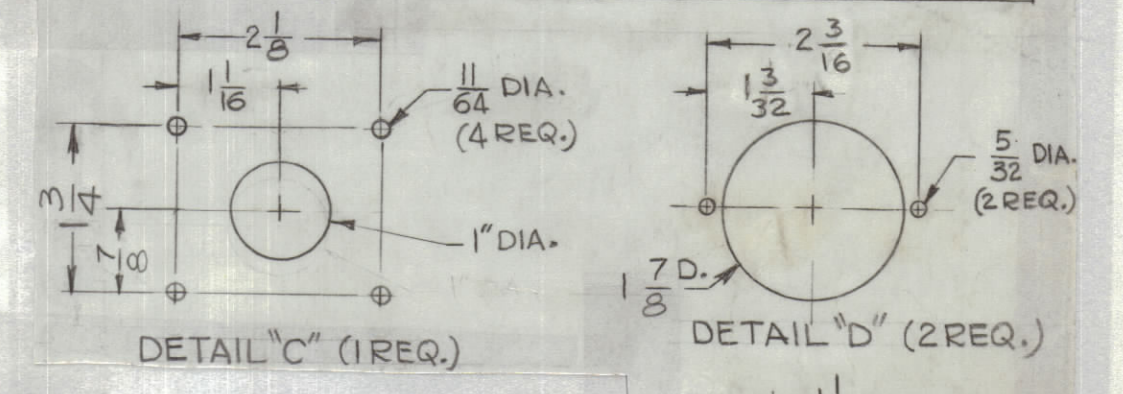


| REVISIONS | | | | | | | |
|-----------|----------------|--|---------|------------|--------|------|------|
| ZONE | SYM | DESCRIPTION | DATE | E.M.N. NO. | DRAFT | CHKD | APPD |
| | X ₁ | ALL HOLES MOVED - 2 "A" HOLES & "H" HOLE ADDED | 1-2-64 | - | G.D.L. | | |
| | X ₂ | 6 "B" HOLES ON SIDE VIEW DELETED | 1-6-64 | | G.D.L. | | |
| | X ₃ | ADDED 4 "J" HOLES 6 WAS 2 1/2, 4 1/2 WAS 1 1/4 | 2-6-64 | | T.R. | | |
| | O | ORIGINAL RELEASE FOR PRODUCTION | 4/24/64 | O | AM | @ | |



1 MOUNT IN "B" HOLES

| HOLE | DESCRIPTION | REQ'D |
|------|------------------|-------|
| A | 11/64 DIA. | 6 |
| B | .191 - .194 DIA. | 12 |
| C | SEE DETAIL "C" | 1 |
| D | SEE DETAIL "D" | 2 |
| E | SEE DETAIL "E" | 1 |
| F | SEE DETAIL "F" | 1 |
| G | 5/16 DIA. | 1 |
| H | 1-1/4 DIA. | 1 |
| J | .250 - .253 DIA. | 4 |



METAL STAMP TMC PART NO. 1/8 HIGH GOTHIC.

REF:LD-1441

- UNLESS OTHERWISE SPECIFIED:
1. USE MATERIAL THICKNESS FOR MAXIMUM RADIUS ON ALL BENDS.
 2. ALL ANGULAR BENDS 90°.
 3. REMOVE ALL BURRS AND SHARP EDGES.
 4. MOUNT INSERTS AFTER FINISHING.

| REQ'D. | ITEM | PART NUMBER | DESCRIPTION | SYMBOL |
|--------|------|---------------|------------------------|--------|
| 4 | 2 | NT-129-1032-4 | NUT, ROUND, SWAGE TYPE | J |
| 12 | 1 | NT-129-632-4 | NUT, ROUND, SWAGE TYPE | B |

| MATERIAL | | LIST OF MATERIAL | |
|---|--|---|---------------|
| .62 THK. ALUMINUM 5052 - H32 | | THE TECHNICAL MATERIEL CORP. MAMARONECK, NEW YORK | |
| FINISH 5404 IRIDITE 14-2 AL-COAT | | TITLE CHASSIS, ELECTRICAL, MAIN | |
| UNLESS OTHERWISE SPECIFIED DIMENSIONS ARE IN INCHES AND INCLUDE CHEMICALLY APPLIED OR PLATED FINISHES | | DRAWN G.D.L. | DATE 12-16-63 |
| DECIMALS .X ± .05 .XX ± .01 .XXX ± .005 | | CHECKED @ | DATE 3-14-64 |
| FRACTIONS ± 1/64 ANGLES ± 0° 30' | | ELECT. DES. J.S.G. | DATE 3/14/64 |
| | | MECH. DES. J.S.G. | DATE 4/22/64 |
| | | SHEET 1 | |

| QTY./UNIT | MODEL USED ON | ASS'Y. NO. |
|-----------|---------------|------------|
| 1 | MPS-1 | |
| SCALE 1:2 | CODE A | |

THE CONTENTS OF THIS DRAWING ARE THE EXCLUSIVE PROPERTY OF THE TECHNICAL MATERIEL CORP. ITS UNAUTHORIZED USE OR REPRODUCTION IN WHOLE OR IN PART IS STRICTLY FORBIDDEN.

NOTES

MS-3658

REV. LTR. O