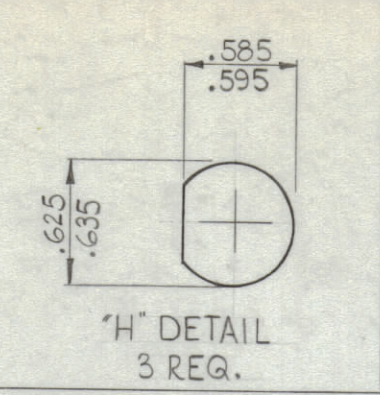
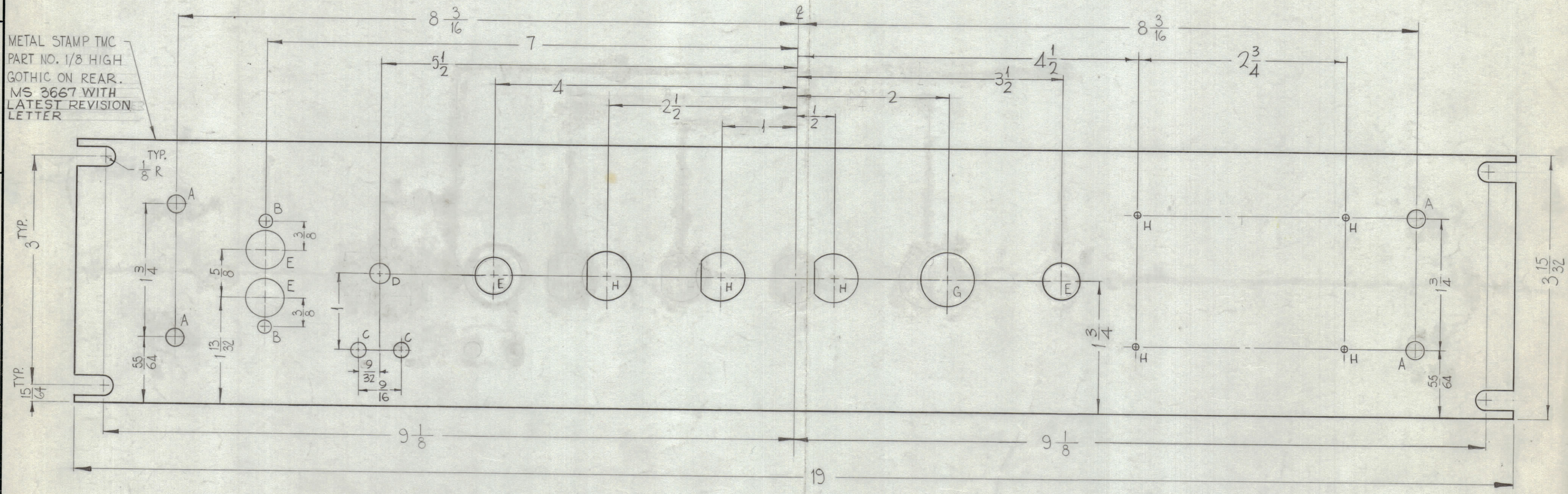


HOLE	DESCRIPTION	REQ.
A	15/64 DIA	4
B	5/32 DIA.	2
C	13/64 DIA.	2
D	1/4 DIA.	1
E	15/32 DIA.	4
F	DELETED	
G	11/16 DIA.	1
H	5/64 DIA	4



REVISIONS						
ZONE	SYM	DESCRIPTION	DATE	E.M.N. NO.	DRAFT	CHKD APPD
X	1	F HOLES WERE 7/16, BECAME 2 E HOLES	5-4-64		SRG	
O		ORIGINAL RELEASE FOR PRODUCTION	5-4-64		SRG	

METAL STAMP TMC
PART NO. 1/8 HIGH
GOTHIC ON REAR.
MS 3667 WITH
LATEST REVISION
LETTER



FRONT VIEW SHOWN

MACHINING:

1. MILL ALL EDGES.
2. HOLES MUST BE DRILLED, UNLESS OTHERWISE SPECIFIED.
3. LATERAL BOW OF PANEL MUST BE KEPT TO .031 TOLERANCE.
4. PANEL MUST BE FREE OF ALL MACHINING MARKS, GOUGES AND SCRATCHES. IF NECESSARY, SAND FRONT OF PANEL WITH NO. 120 GRIT SANDPAPER.

FINISH NOTES:

1. S404 - IRIDITE 14-2 AL-COAT.
2. S114 - ZINC CHROMATE PRIMER) FRONT AND
3. S115 - SMOOTH GRAY ENAMEL) EDGES ONLY

NOTES

1	SWCU-1	
Q'TY./UNIT	MODEL USED ON	ASS'Y. NO.
SCALE 1=1	CODE A	

THE CONTENTS OF THIS DRAWING ARE THE EXCLUSIVE PROPERTY OF THE TECHNICAL MATERIEL CORP. ITS UNAUTHORIZED USE OR REPRODUCTION IN WHOLE OR IN PART IS STRICTLY FORBIDDEN.

REF: LD-1374

REQ'D.	ITEM	PART NUMBER	DESCRIPTION	SYMBOL
F. BUDETTI LIST OF MATERIAL				
MATERIAL	3/16 ALUMINUM 2024-T3		THE TECHNICAL MATERIEL CORP. MAMARONECK, NEW YORK	
FINISH	SEE NOTES		TITLE PANEL, FRONT	
UNLESS OTHERWISE SPECIFIED DIMENSIONS ARE IN INCHES AND INCLUDE CHEMICALLY APPLIED OR PLATED FINISHES			DRAWN W.A. FRANCO	DATE 10-16-63
DECIMALS .X ± .05 .XX ± .01 .XXX ± .005			CHECKED <i>[Signature]</i>	DATE 11/16/64
FRACTIONS ± 1/64 ANGLES ± 0° 30'			ELECT. DES. <i>[Signature]</i>	DATE 11/16/64
TOLERANCES			MECH. DES. <i>[Signature]</i>	DATE 11/16/64
FINAL APPROVAL KAC				DATE 5-6-64
MS 3667				0
SHEET				REV. LTR.