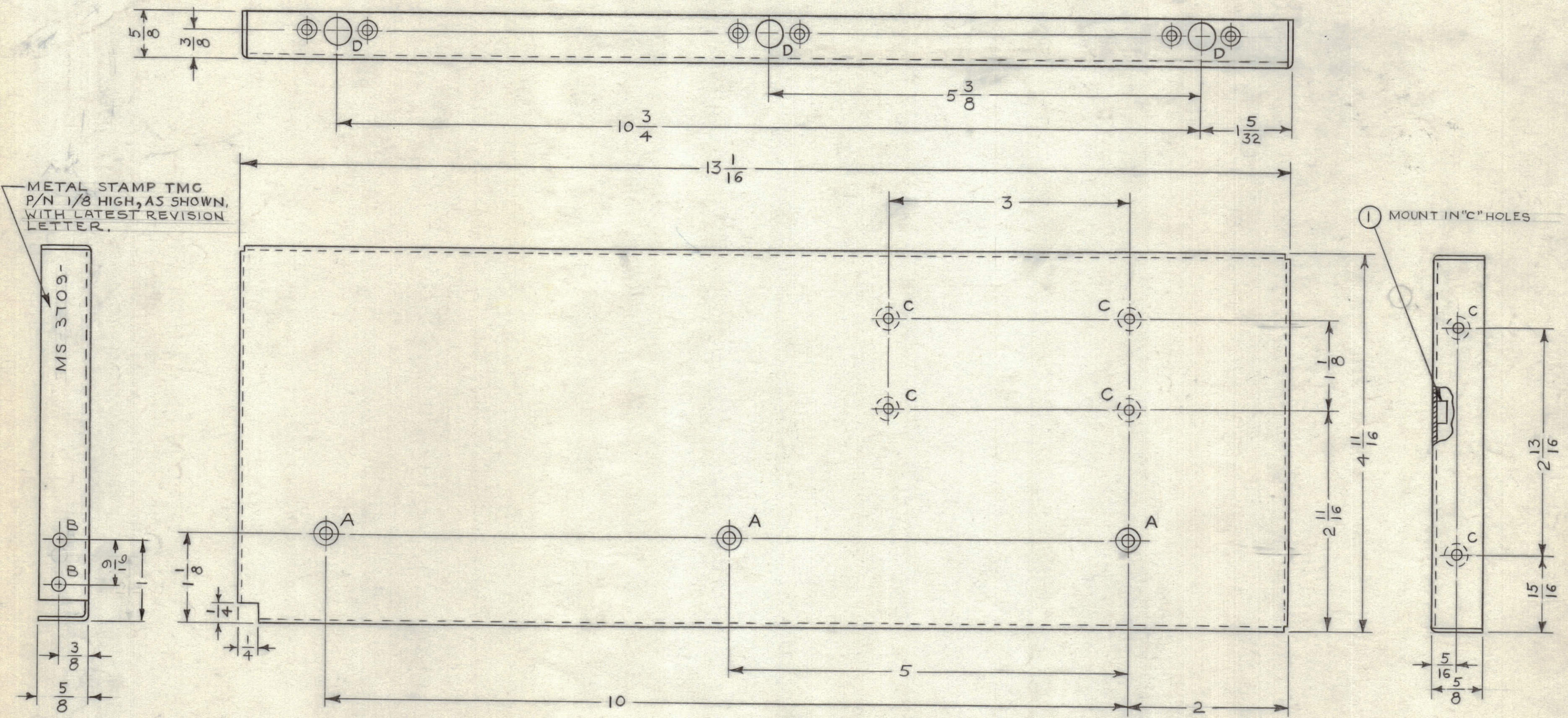
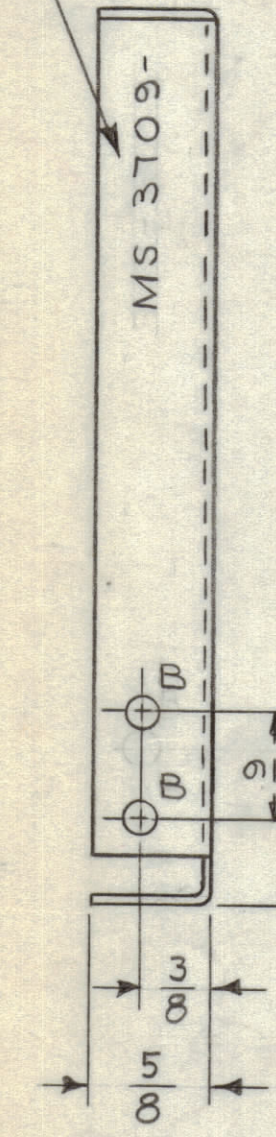


REVISIONS							
ZONE	SYM	DESCRIPTION	DATE	E.M.N. NO.	DRAFT	CHKD	APPD
D7	X1	"B" HOLE 1" LOCATION WAS 13/16"; ADDED 9/16 DIM. & "B" HOLE; "B" HOLE QTY WAS 1; DWG TITLE WAS PANEL, SIDE LEFT MAIN CHASSIS.	4/2/64	1	JL		
X	X2	"A" HOLE WAS .166 DIA HOLE & "C" SINK 82° X .28 DIA. DETAIL "D" MOUNTING HOLE DIA WERE .110 DIA.	6/15/64	X2	A.M.		
	X3	DET. D MTG WAS .090 DIA & "C" SINK 82° X .177 DIA. "A" HOLE WAS .169 DIA & "C" SINK 82° X .337 DIA.	6/23/64	X3	hda		
	Ø	ORIGINAL RELEASE FOR PRODUCTION	6/25/64	Ø	A.M.		

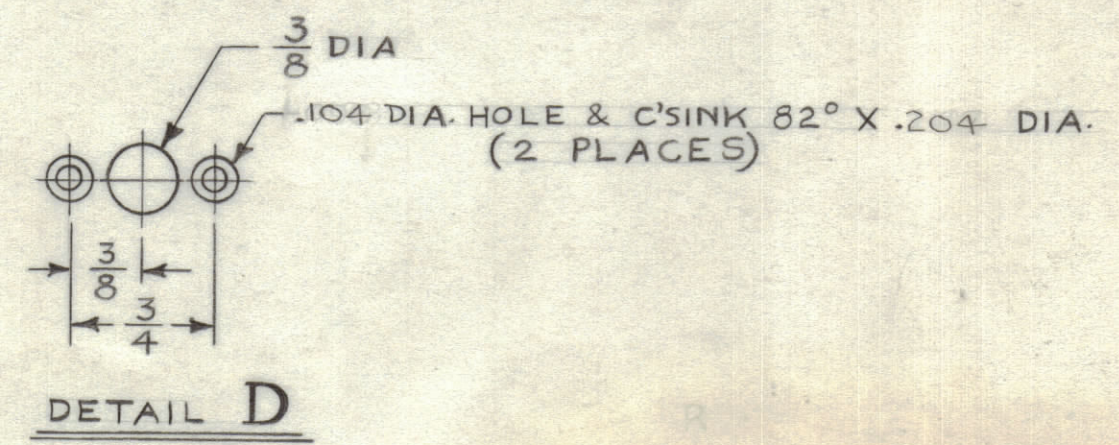


METAL STAMP TMG
P/N 1/8 HIGH, AS SHOWN,
WITH LATEST REVISION
LETTER.



LEGEND		
HOLE	DESCRIPTION	REQD
A	.144 DIA HOLE & CSINK 82° X .284 DIA	3
B	3/16 DIA	2
C	.250-.253 DIA	6
D	SEE DETAIL	6

- UNLESS OTHERWISE SPECIFIED:
1. USE MATERIAL THICKNESS FOR MAXIMUM RADIUS ON ALL BENDS.
 2. ALL ANGULAR BENDS 90°.
 3. REMOVE ALL BURRS AND SHARP EDGES.
 4. MOUNT INSERTS AFTER FINISHING.



6	1	NT-129-1032-4	NUT, ROUND, SWAGE TYPE	C
REQ'D.	ITEM	PART NUMBER	DESCRIPTION	SYMBOL
M. GELLMAN LIST OF MATERIAL				
MATERIAL .062 THICK 5052-H32 ALUMINUM			THE TECHNICAL MATERIEL CORP. MAMARONECK, NEW YORK	
FINISH 5404 IRIDITE 14 2 AL COAT			TITLE PLATE, SIDE-LEFT	
UNLESS OTHERWISE SPECIFIED DIMENSIONS ARE IN INCHES AND INCLUDE CHEMICALLY APPLIED OR PLATED FINISHES			DRAWN <i>R. Peters</i>	DATE 1-21-64
DECIMALS .X ± .05 .XX ± .01 .XXX ± .005			CHECKED <i>hda</i>	DATE 6-23-64
FRACTIONS ± 1/64 ANGLES ± 0° 30'			ELECT. DES. <i>hda</i>	DATE
TOLERANCES			MECH. DES. <i>M. Gellman</i>	DATE 6-29-64
THE CONTENTS OF THIS DRAWING ARE THE EXCLUSIVE PROPERTY OF THE TECHNICAL MATERIEL CORP. ITS UNAUTHORIZED USE OR REPRODUCTION IN WHOLE OR IN PART IS STRICTLY FORBIDDEN.			DATE	
NOTES			SHEET	
			MS3709	
			REV. LTR.	

MS 3709
Ø