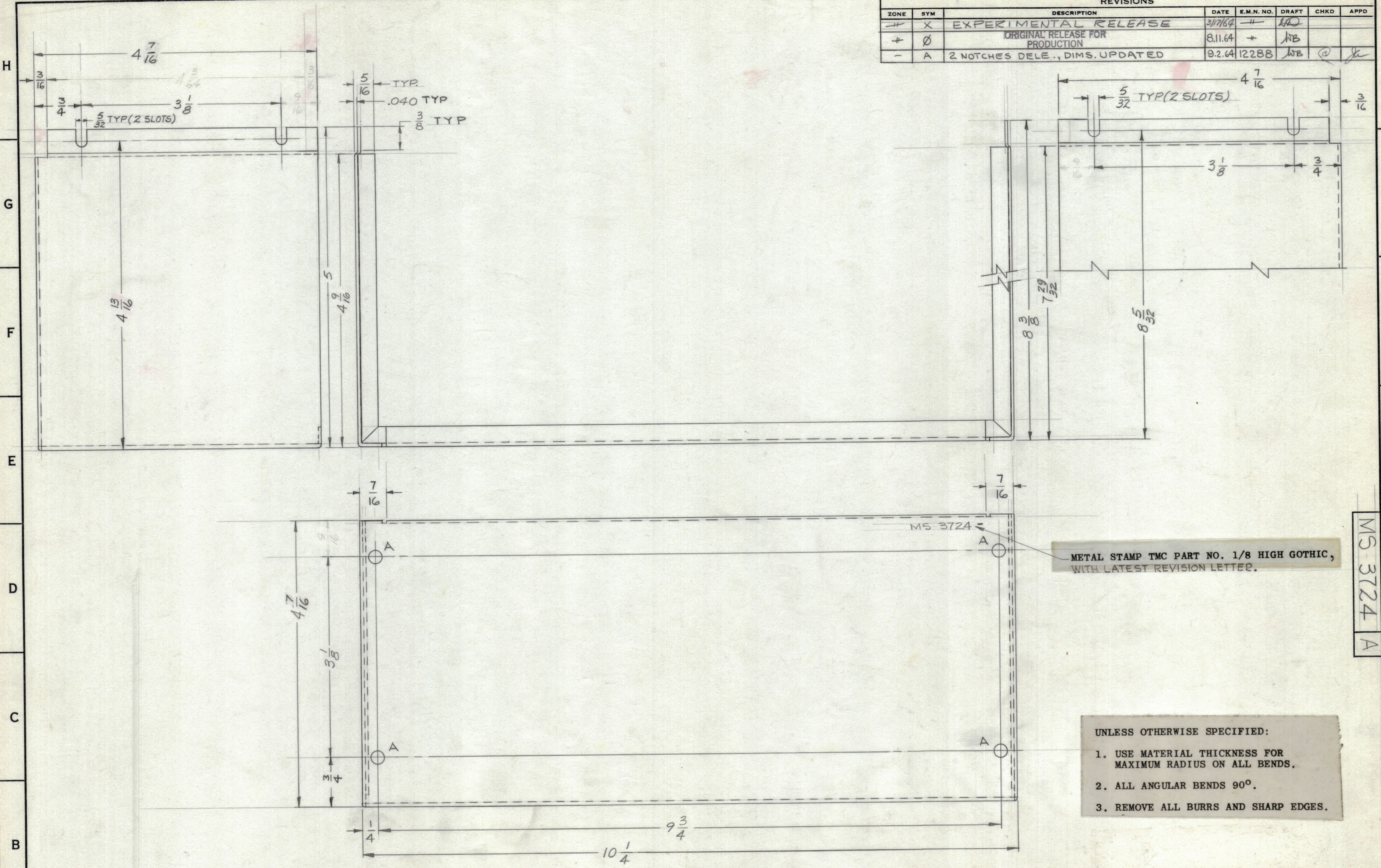


REVISIONS						
ZONE	SYM	DESCRIPTION	DATE	E.M.N. NO.	DRAFT	CHKD
-	X	EXPERIMENTAL RELEASE	3/17/64	-4-	LAD	
+	Ø	ORIGINAL RELEASE FOR PRODUCTION	8.11.64	+	NB	
-	A	2 NOTCHES DELE., DIMS. UPDATED	9.2.64	12288	NB	@



METAL STAMP TMC PART NO. 1/8 HIGH GOTHIC, WITH LATEST REVISION LETTER.

- UNLESS OTHERWISE SPECIFIED:
1. USE MATERIAL THICKNESS FOR MAXIMUM RADIUS ON ALL BENDS.
 2. ALL ANGULAR BENDS 90°.
 3. REMOVE ALL BURRS AND SHARP EDGES.

HOLE LEGEND		
HOLE	DESCRIPTION	REQ
A	3/16 DIA	4

REQ'D.	ITEM	PART NUMBER	DESCRIPTION	SYMBOL
	T. KRUY	E31128	LIST OF MATERIAL	
MATERIAL			THE TECHNICAL MATERIEL CORP.	
.040 THK ALUMINUM			MAMARONECK, NEW YORK	
5052-H32			TITLE	
FINISH			COVER, OVEN WRAPAROUND	
S404 YEL IRIDITE			DRAWN <i>Adams</i>	
UNLESS OTHERWISE SPECIFIED			DATE 9/11/64	
DIMENSIONS ARE IN INCHES AND INCLUDE			CHECKED @	
CHEMICALLY APPLIED OR PLATED FINISHES			DATE 9/12/64	
DECIMALS			ELECT. DES. <i>Junger</i>	
.X ± .05			DATE 9/12/64	
.XX ± .01			MECH. DES.	
.XXX ± .005			DATE	
TOLERANCES			MS-3724	
FRACTIONS ± 1/64			SHEET	
ANGLES ± 0° 30'			REV. LTR.	
			A	

HFR-2A		
Q'TY/UNIT	MODEL USED ON	ASS'Y. NO.
SCALE 1:1	CODE A	
THE CONTENTS OF THIS DRAWING ARE THE EXCLUSIVE PROPERTY OF THE TECHNICAL MATERIEL CORP. ITS UNAUTHORIZED USE OR REPRODUCTION IN WHOLE OR IN PART IS STRICTLY FORBIDDEN.		

NOTES

MS 3724 A