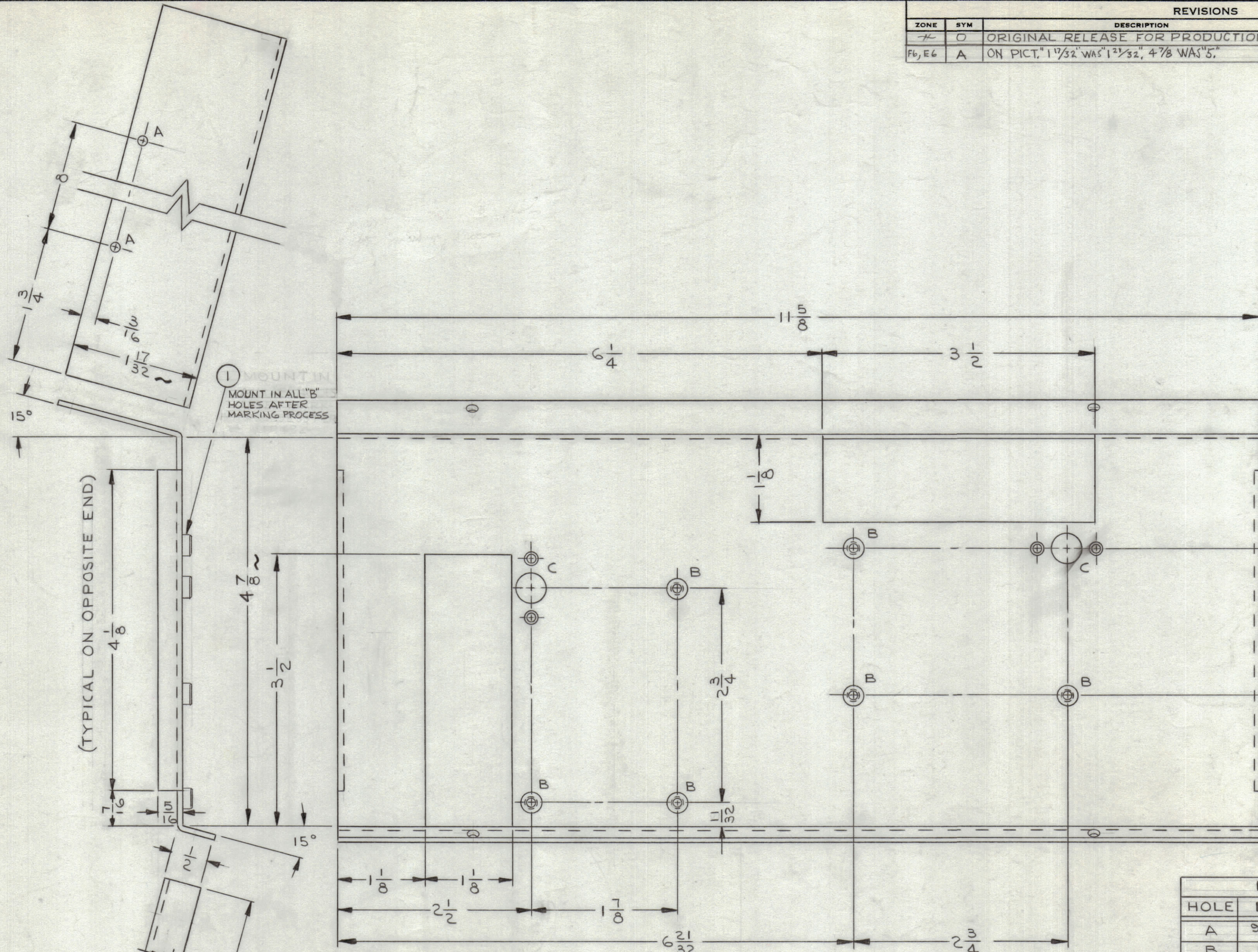


REVISIONS							
ZONE	SYM	DESCRIPTION	DATE	E.M.N. NO.	DRAFT	CHKD	APPD
-	O	ORIGINAL RELEASE FOR PRODUCTION	6-1-64	O	A.M.		
F6, E6	A	ON PICT. "1 17/32" WAS "1 21/32", 4 7/8 WAS "5"	11-9-64	12884	J.L.		



METAL STAMP TMC PART NO.
 1/8 HIGH GOTHIC.
 W/LATEST REVISION LETTER

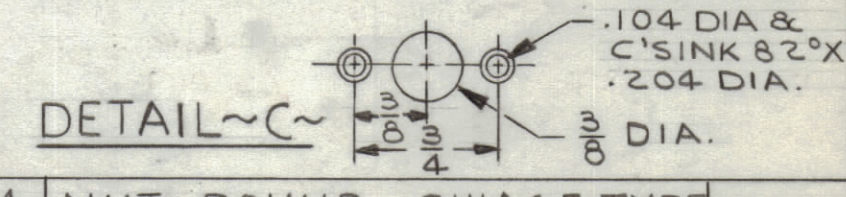
MS-3727A

HOLE LEGEND		
HOLE	DESCRIPTION	REQ'D
A	3/64 DIA.	4
B	.191-194 DIA.	6

- UNLESS OTHERWISE SPECIFIED:**
- USE MATERIAL THICKNESS FOR MAXIMUM RADIUS ON ALL BENDS.
 - ALL ANGULAR BENDS 90°.
 - REMOVE ALL BURRS AND SHARP EDGES.
 - MOUNT INSERTS AFTER FINISHING & MARKING PROCESS PER LD1482.

- FINISH NOTES:**
- S404 - IRIDITE 14-2 AL-COAT.

REF. LD-1482



REQ'D	ITEM	PART NUMBER	DESCRIPTION	SYMBOL
6	1	NT-129-632-4	NUT, ROUND, SWAGE TYPE	

M. GELLMAN LIST OF MATERIAL

MATERIAL .063 THK ALUMINUM 5052-H32	TITLE BRACKET, MOUNTING (TEST CARDS VLR-1)
FINISH SEE NOTE-1	
THE TECHNICAL MATERIEL CORP. MAMARONECK, NEW YORK	

UNLESS OTHERWISE SPECIFIED DIMENSIONS ARE IN INCHES AND INCLUDE CHEMICALLY APPLIED OR PLATED FINISHES	DRAWN J. LESHINSKI DATE 3/16/64	FINAL APPROVAL RJC DATE 6-1-64	DATE 6-1-64
DECIMALS .X ± .05 .XX ± .01 .XXX ± .005	TOLERANCES	FRACTIONS ± 1/64 ANGLES ± 0° 30'	ELECT. DES. MECH. DES. DATE 6-1-64

MS-3727A

Q'TY/UNIT	MODEL USED ON	ASS'Y. NO.
SCALE 1:1	VLR-1 CODE	

THE CONTENTS OF THIS DRAWING ARE THE EXCLUSIVE PROPERTY OF THE TECHNICAL MATERIEL CORP. ITS UNAUTHORIZED USE OR REPRODUCTION IN WHOLE OR IN PART IS STRICTLY FORBIDDEN.

NOTES