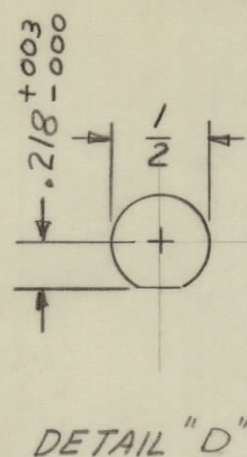
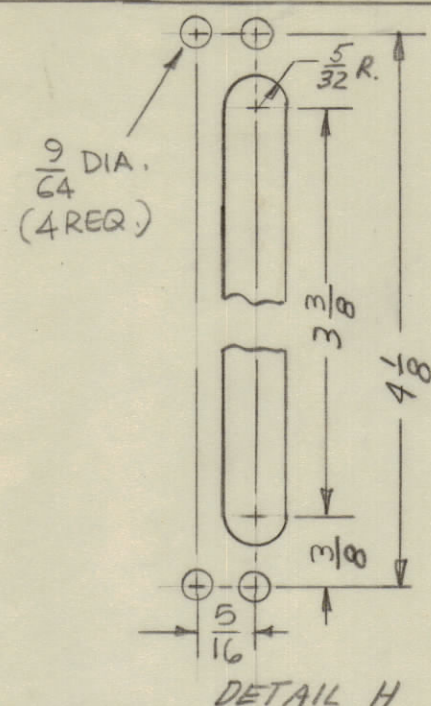
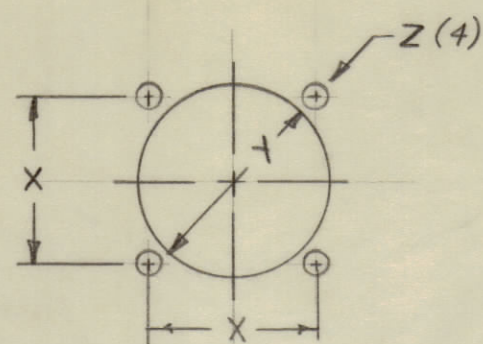


HOLE	DESCRIPTION	REQ
A	9/64 DIA.	4
B	11/64 DIA.	2
C	15/64 DIA.	4
D	SEE DETAIL	4
E		1
F		3
G		1
H	SEE DETAIL	1

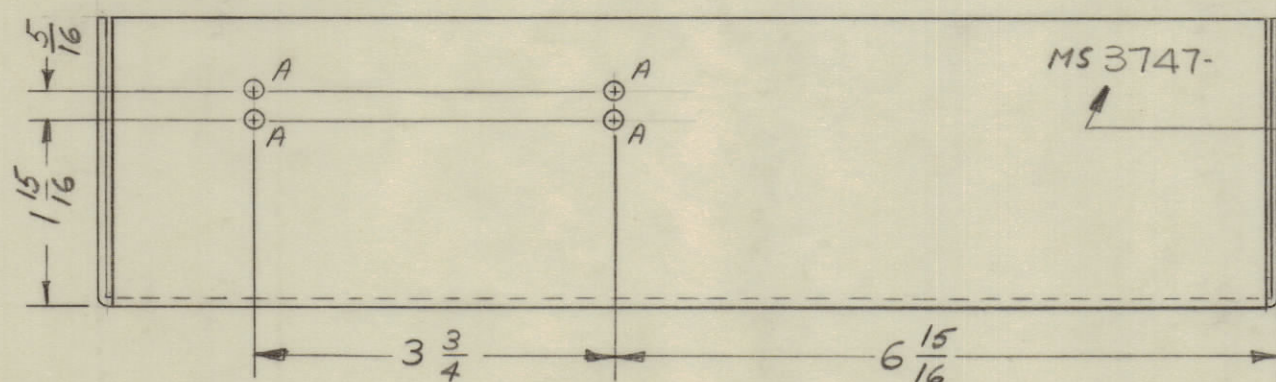


DETAIL	X	Y	Z
E	1-5/32	1-5/16	9/64
F	1-3/8	1-5/8	11/64
G	1-3/4	2-1/8	11/64

DETAIL E-F-G

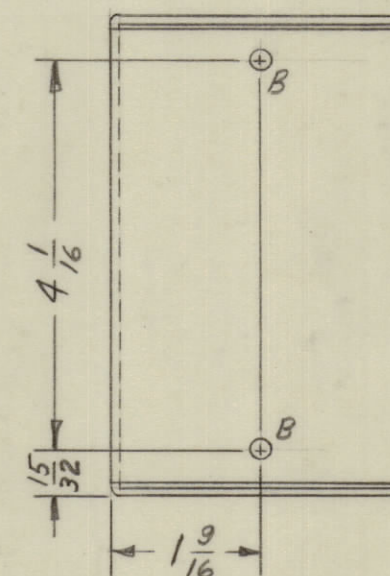
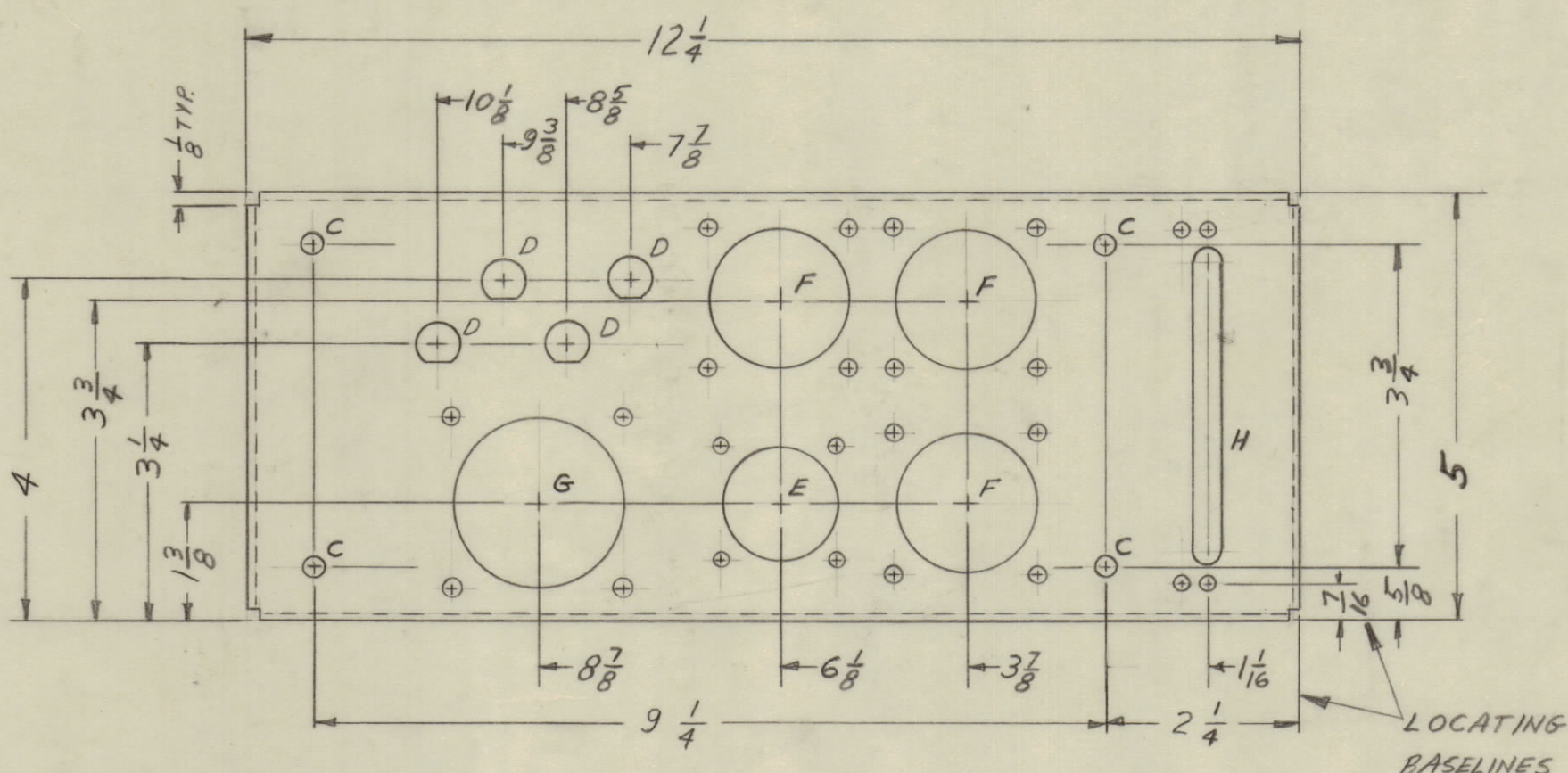
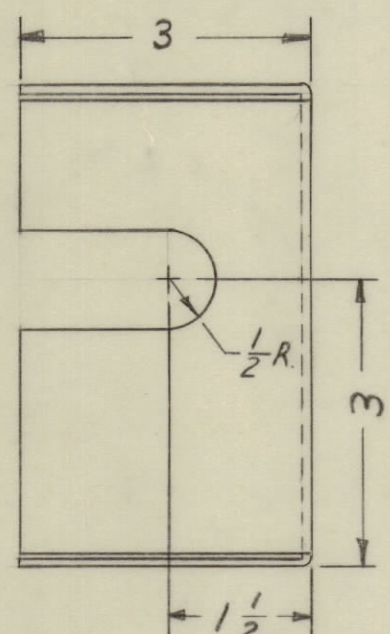


REVISIONS						
REV	DESCRIPTION	DATE	ENGR. NO.	DRAFT	CHKD	APPD
X	EXP. RELEASE	28 SEPT 66	X	DM	DM	DM
Ø	ORIGINAL RELEASE FOR PRODUCTION	12-14-66	Ø	RME		



MS3747-

MARK THE PIN
1/8" HIGH GOTHIC
W/LATEST REV.
LETTER.



MS3747 Ø

- UNLESS OTHERWISE SPECIFIED:
1. USE MATERIAL THICKNESS FOR MAXIMUM RADIUS ON ALL BENDS
 2. ALL ANGULAR BENDS 90 DEGREES
 3. REMOVE ALL BURRS AND SHARP EDGES

REF: LD1492-

REQ'D	ITEM	PART NUMBER	DESCRIPTION	SYMBOL
BUDETTI LIST OF MATERIAL				
MATERIAL		THE TECHNICAL MATERIEL CORP.		
.081 ALUMINUM 5052-H32		MAMARONECK, NEW YORK		
FINISH		TITLE		
5404 VEL IRIDITE		CHASSIS TERMINAL		
UNLESS OTHERWISE SPECIFIED DIMENSIONS ARE IN INCHES AND INCLUDE CHEMICALLY APPLIED OR PLATED FINISHES		DRAWN	DATE	FINAL APPROVAL
		DM	27 SEP 66	ØB
		CHECKED	DATE	
		DM		
DECIMALS		ELECT. DES.	DATE	
.X ± .05		DM	20 DEC 66	
.XX ± .01		MECH. DES.	DATE	
.XXX ± .005		NLC	11-29-66	
FRACTIONS		SHEET		
± 1/64		MS3747-Ø		
ANGLES		REV. LTR.		
± 0° 30'				

QTY.	USED ON	DATE
1	RAK III-2	