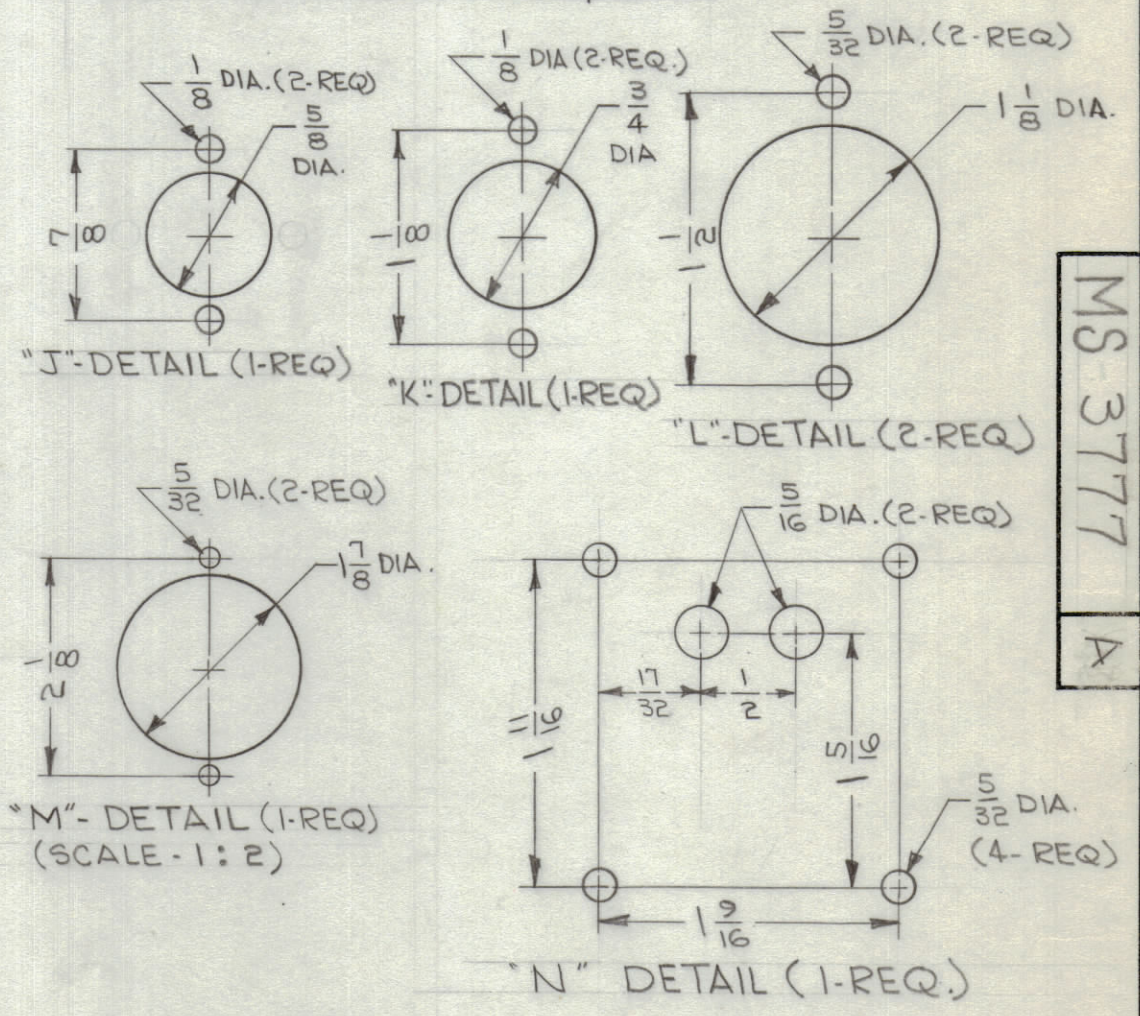


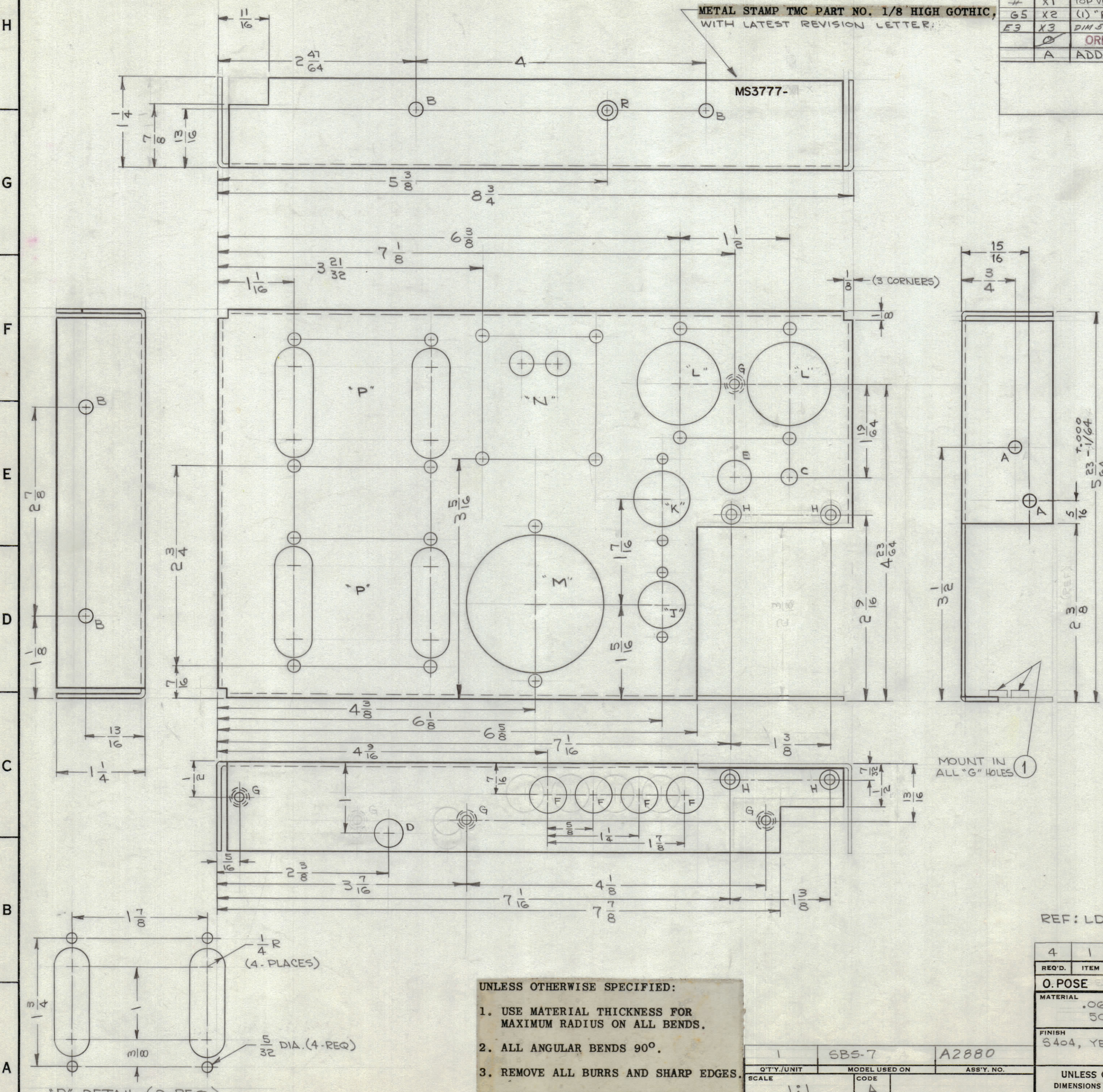
REVISIONS						
ZONE	SYM	DESCRIPTION	DATE	E.M.N. NO.	DRAFT	CHKD
-	X	EXPER. RELEASE	4-20-64	1		
-	X1	TOP VIEW, 7/8 x 11/16 NOTCH ADDED; "N" DETAIL, DIM 1/2 WAS 1/4	5-6-64	2		
G5	X2	(1) "R" HOLE WAS (1) "H" HOLE	5-15-64	3		
E3	X3	DIM 5-23/64+000-1/64 WAS 5-23/64+000-.005	9-8-65	4		
		ORIGINAL RELEASE FOR PRODUCTION	4/1/65			
A		ADDED 1 "A" HOLE	11-15-66	17243	RME	

LEGEND		
HOLE	DESCRIPTION	REQ.
A	5/32 DIA.	2
B	11/64 DIA.	4
C	13/64 DIA.	1
D	3/8 DIA.	1
E	7/16 DIA.	1
F	1/2 DIA.	4
G	.191-.194 DIA.	4
H	.120 DIA. HOLE, C'SINK 82° TO .230	4
J	SEE DETAIL	1
K	SEE DETAIL	1
L	SEE DETAIL	2
M	SEE DETAIL	1
N	SEE DETAIL	1
P	SEE DETAIL	2
R	.144 DIA. HOLE, C'SINK 82° TO .284 DIA.	1



MS 3777  
A

METAL STAMP TMC PART NO. 1/8 HIGH GOTHIC, WITH LATEST REVISION LETTER:



- UNLESS OTHERWISE SPECIFIED:
- USE MATERIAL THICKNESS FOR MAXIMUM RADIUS ON ALL BENDS.
  - ALL ANGULAR BENDS 90°.
  - REMOVE ALL BURRS AND SHARP EDGES.
  - MOUNT INSERTS AFTER FINISHING.

NOTES

1	SBS-7	A2880
Q'TY./UNIT	MODEL USED ON	ASS'Y. NO.
SCALE 1:1	CODE A	

4	1	NT 129-632-4	NUT, ROUND, SWAGE TYPE	G
REQ'D.	ITEM	PART NUMBER	DESCRIPTION	SYMBOL
O. POSE LIST OF MATERIAL				
MATERIAL .064, ALUMINUM 5052-H32			THE TECHNICAL MATERIEL CORP. MAMARONECK, NEW YORK	
FINISH S404, YELLOW IRIDITE			TITLE CHASSIS, ELECTRICAL, EQUIPMENT REGULATOR	
UNLESS OTHERWISE SPECIFIED DIMENSIONS ARE IN INCHES AND INCLUDE CHEMICALLY APPLIED OR PLATED FINISHES		DRAWN G. L. ...	DATE 4-20-64	FINAL APPROVAL M. M. ...
DECIMALS .X ± .05 .XX ± .01 .XXX ± .005		ELECT. DES. ...	DATE 10/29/65	DATE 10/30/65
FRACTIONS TOLERANCES ± 1/64 ANGLES ± 0° 30'		MECH. DES. ...	DATE 9-29-65	
			SHEET	REV. LTR.