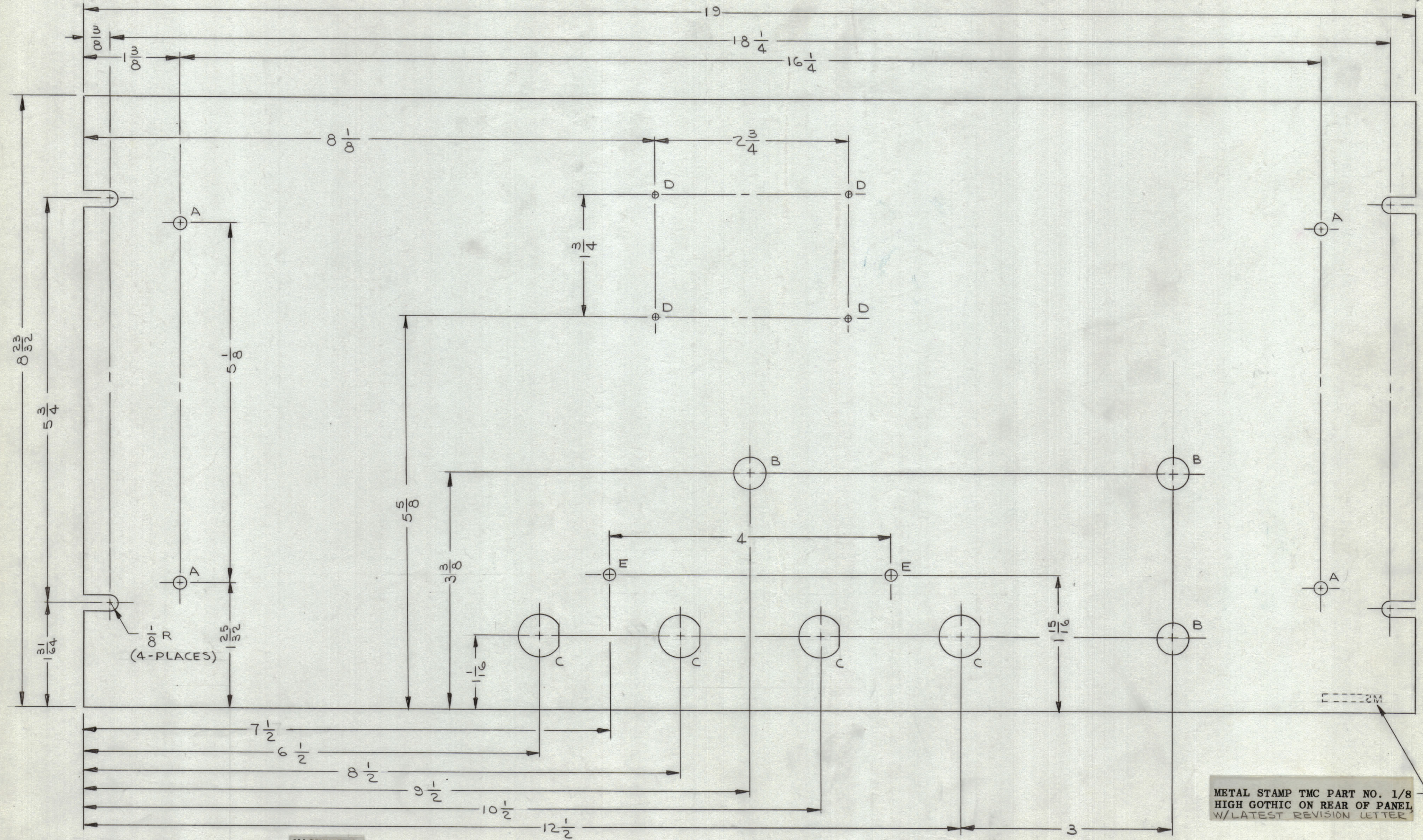


REVISIONS						
ZONE	SYM	DESCRIPTION	DATE	E.M.N. NO.	DRAFT	CHKD APPD
	X	EXPERIMENTAL RELEASE	5/27/64	X	JL	
	X1	ADDED "D" HOLES	9/9/64	X1	JL	W.J.
	X2	ADDED "E" HOLES; "D" HOLES WERE .093	11/5/64	X2	JL	W.M. W.J.
	X3	"B" HOLE QTY WAS (1)	12/7/64	X3	JL	J.M. W.J.
	Ø	ORIGINAL RELEASE FOR PRODUCTION	2-10-65	Ø	JL	JCB



MS 38411

METAL STAMP TMC PART NO. 1/8 HIGH GOTHIC ON REAR OF PANEL W/LATEST REVISION LETTER

HOLE	DESCRIPTION	REQ'D
A	13/64 DIA	4
B	15/32 DIA	3
C	SEE DETAIL	4
D	NO. 48 (.0760) DR.	4
E	3/16 DIA	2

MACHINING:

- MILL ALL EDGES.
- HOLES MUST BE DRILLED, UNLESS OTHERWISE SPECIFIED.
- LATERAL BOW OF PANEL MUST BE KEPT TO .031 TOLERANCE.
- PANEL MUST BE FREE OF ALL MACHINING MARKS, GOUGES AND SCRATCHES. IF NECESSARY, SAND FRONT OF PANEL WITH NO. 120 GRIT SANDPAPER.

FINISH NOTES:

- S404 - IRIDITE 14-2 AL-COAT.
- S114 - ZINC CHROMATE PRIMER) FRONT AND
- S115 - SMOOTH GRAY ENAMEL) EDGES ONLY

NOTES

1	RTTD-1	A3702
QTY./UNIT	MODEL USED ON	ASS'Y. NO.
SCALE	CODE	
1:1	A	

THE CONTENTS OF THIS DRAWING ARE THE EXCLUSIVE PROPERTY OF THE TECHNICAL MATERIEL CORP. ITS UNAUTHORIZED USE OR REPRODUCTION IN WHOLE OR IN PART IS STRICTLY FORBIDDEN.

REF.: LD1589

REQ'D.	ITEM	PART NUMBER	DESCRIPTION	SYMBOL
F. E. EATON LIST OF MATERIAL				
MATERIAL			THE TECHNICAL MATERIEL CORP.	
3/16 THK ALUMINUM			MAMARONECK, NEW YORK	
2024-T3			TITLE	
FINISH			PANEL, FRONT	
SEE NOTES				
UNLESS OTHERWISE SPECIFIED DIMENSIONS ARE IN INCHES AND INCLUDE CHEMICALLY APPLIED OR PLATED FINISHES		DRAWN	DATE	FINAL APPROVAL
		J. LESHINSKI	5/27/64	JL
		CHECKED	DATE	
		JCB	2/9/65	
		ELECT. DES.	DATE	
		W. JORDAN	2/8/65	
		MECH. DES.	DATE	
			2/8/65	
DECIMALS		FRACTIONS		
.X ± .05		± 1/64		
.XX ± .01		ANGLES ± 0° 30'		
.XXX ± .005				