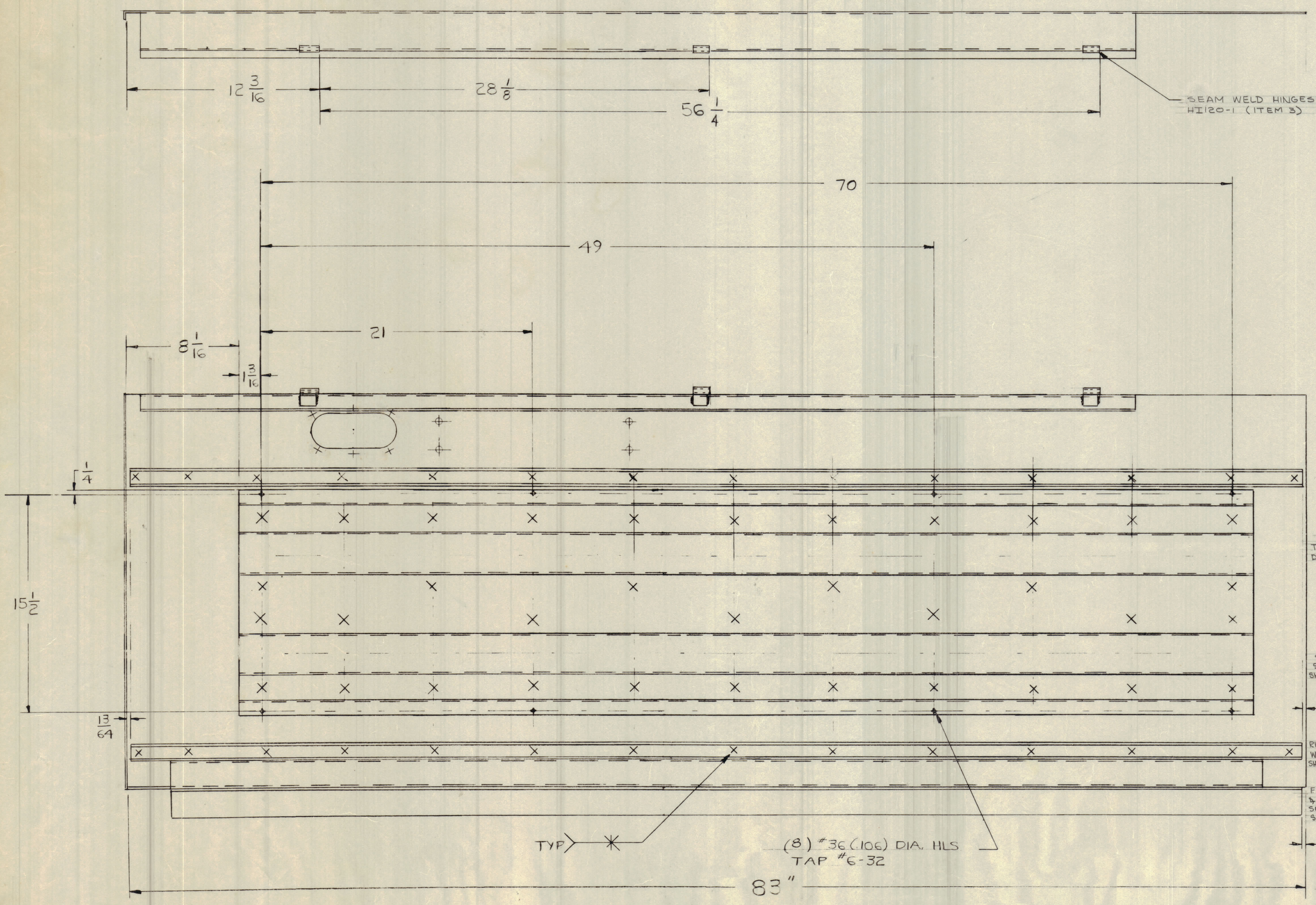
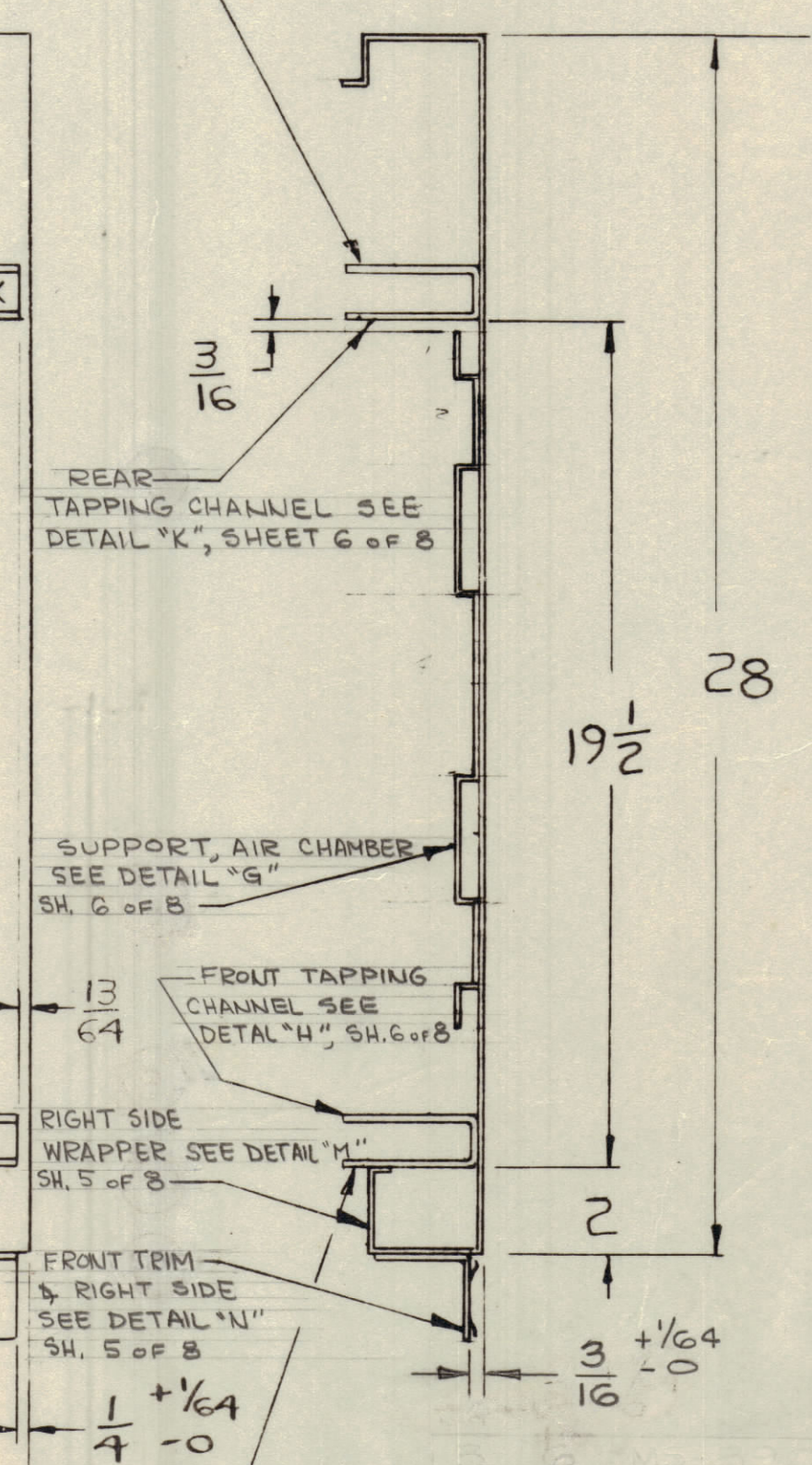


REVISIONS							
ZONE	SYM	DESCRIPTION	DATE	E.M.N. NO.	DRAFT	CHKD	APPD
X		EXPER. RELEASE	10-15-64	X			
Ø		ORIGINAL RELEASE FOR PRODUCTION	11-25-64	Ø	92		



SEAM WELD HINGES
HI20-1 (ITEM 3)

10-32 TAP HLS IN THIS LEG



TYP * (8) #36 (106) DIA. HLS
TAP #6-32

#10-32 TAPPED HOLES
IN THIS LEG

Ø MS 3884

NOTES

1	RAK 102-1 MS 3883
QTY./UNIT	MODEL USED OR
SCALE	CODE
	A

THE CONTENTS OF THIS DRAWING ARE THE EXCLUSIVE PROPERTY OF THE TECHNICAL MATERIEL CORP. ITS UNAUTHORIZED USE OR REPRODUCTION IN WHOLE OR IN PART IS STRICTLY FORBIDDEN.

REQ'D.	ITEM	PART NUMBER	DESCRIPTION	SYMBOL
			STURMER	
LIST OF MATERIAL				
MATERIAL			THE TECHNICAL MATERIEL CORP.	
SEE SHEETS 5 & 6			MAMARONECK, NEW YORK	
FINISH			TITLE	
			CABINET, ELECTRICAL EQUIPMENT	
			(RIGHT SIDE SUB-ASSY)	
UNLESS OTHERWISE SPECIFIED	DRAWN	DATE	FINAL APPROVAL	DATE
DIMENSIONS ARE IN INCHES AND INCLUDE	CHECKED	DATE		
CHEMICALLY APPLIED OR PLATED FINISHES				
DECIMALS	ELECT. DES.	DATE	MS 3884	
1/164	NECH. DES.	DATE		
.XX ± .01				
.XXX ± .005				
TOLERANCES				
ANGLES				
± 0° 30'				