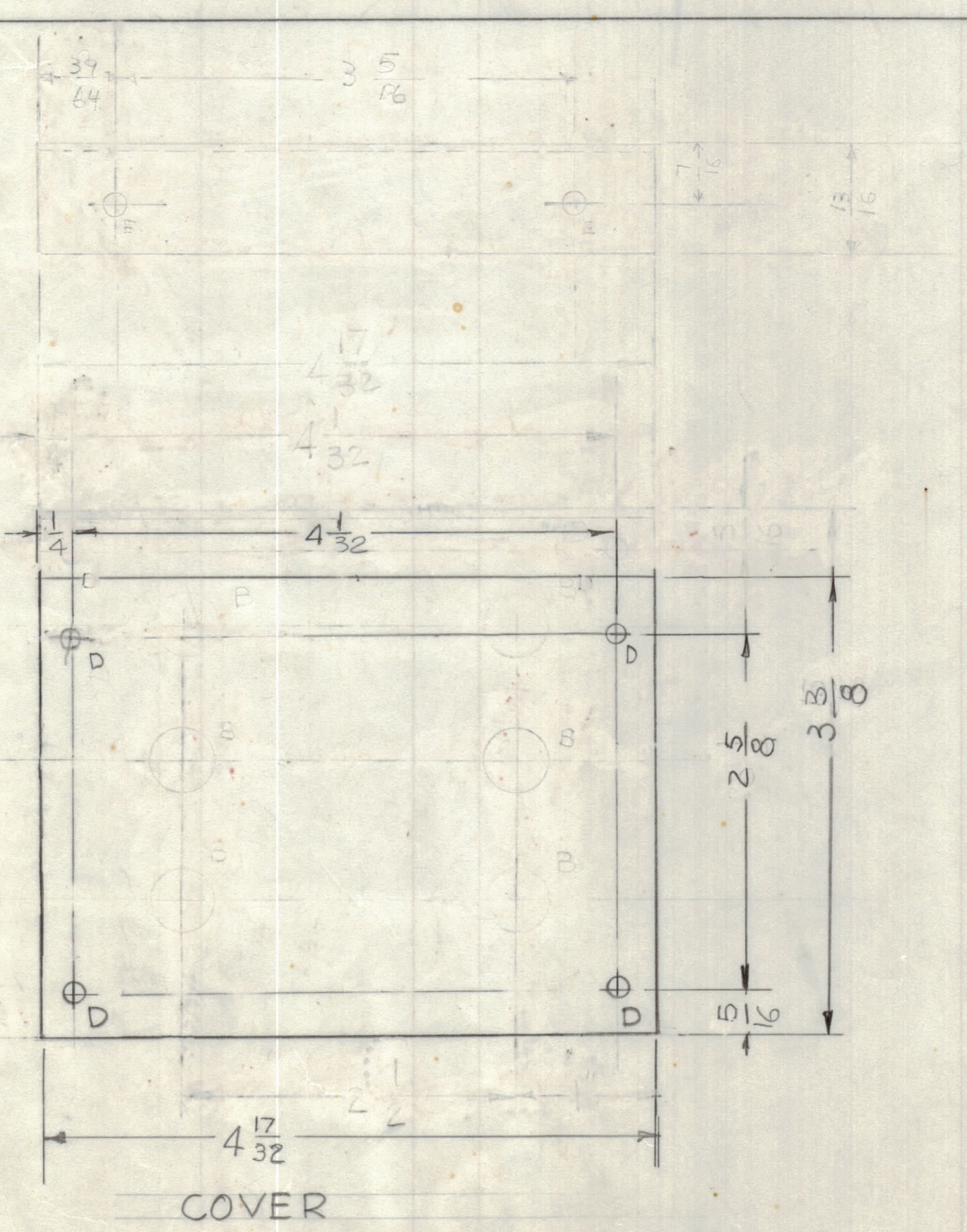
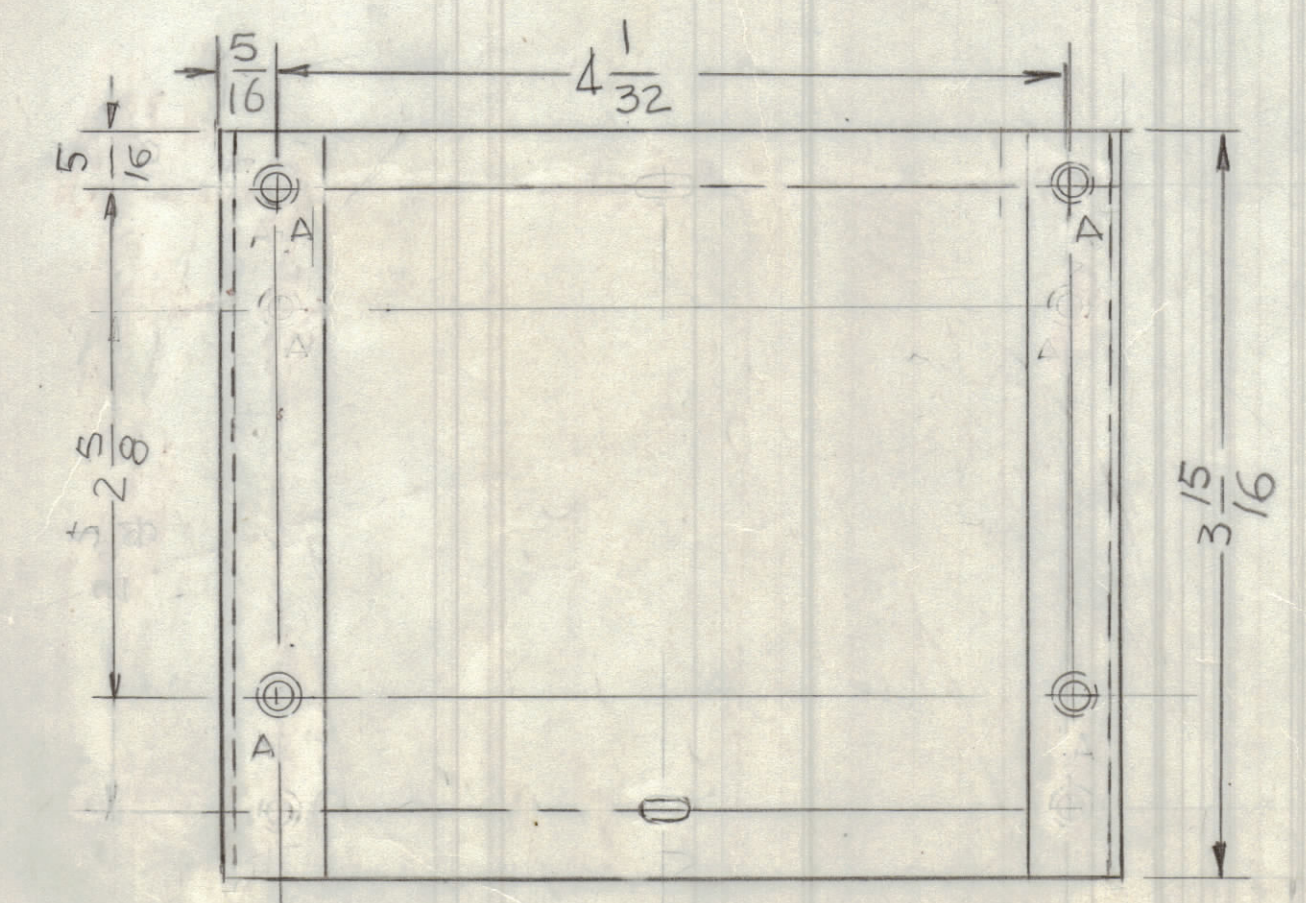
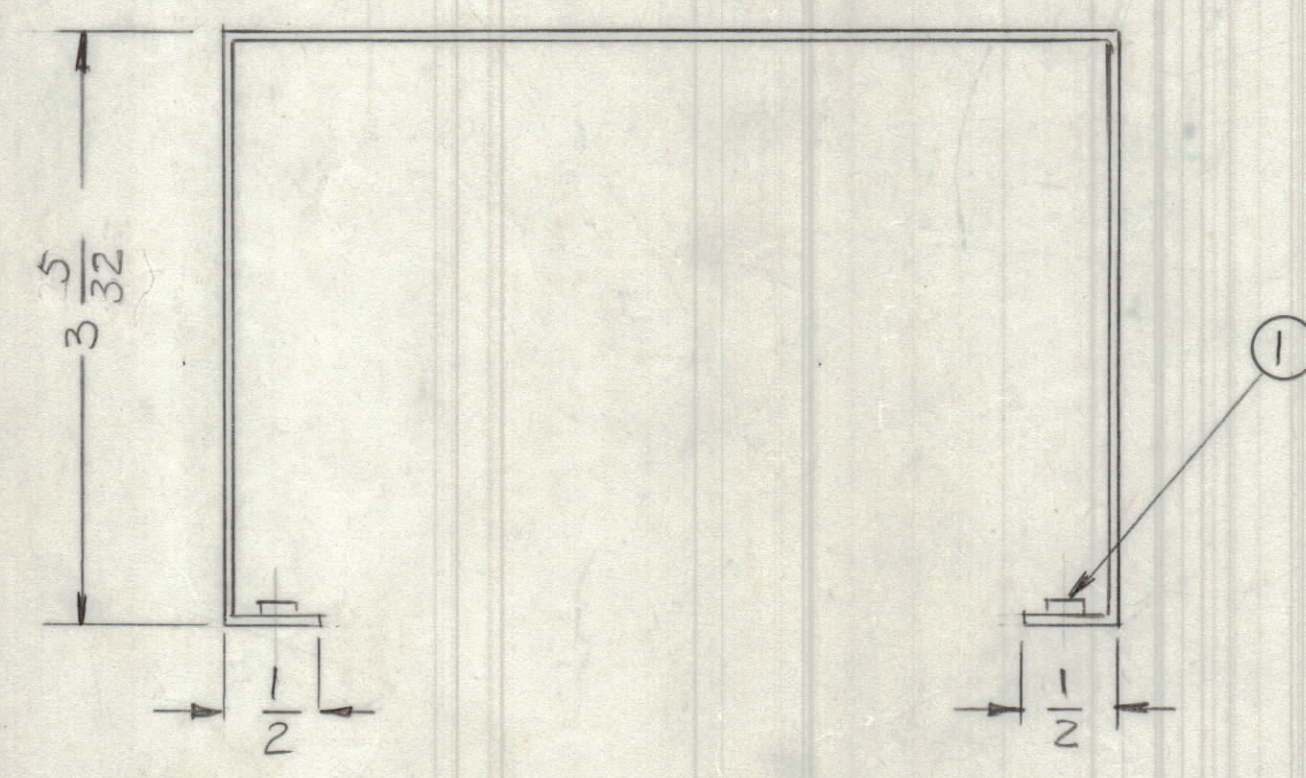
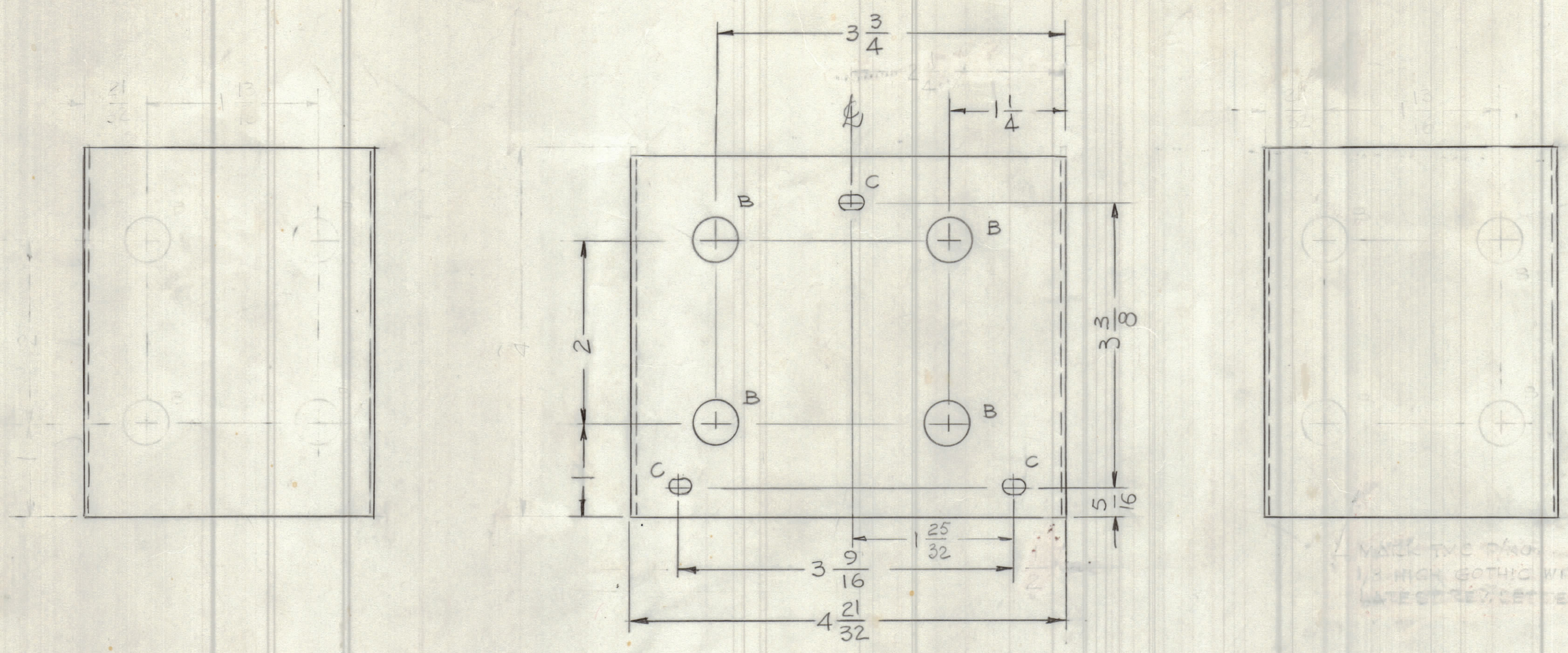


REVISIONS							
E.M.N.O.	DRAFT	CHKD	ZONE	LTR	DESCRIPTION	DATE	APPROVED
21858	GDL			D	REVISED & REDRAWN FROM 4 SIZE	1-7-81	
	GDL			E	REMOVED 1/16" LIP 4" DIM TO 3 15/16		
				F	REMOVED 10 B HOLES ADD LIP TO COVER 2 E HOLES		
	GDL			E	DIMS COVER UPDATED - TWO A HOLE RELOC	10-27-92	
	GDL			H	DIMS 2 1/4 DEL & DIM 1 3/8 ADD METAL STAMP NOTE DEL'D	1-19-93	

UNLESS OTHERWISE SPECIFIED:

1. USE MATERIAL THICKNESS FOR MAXIMUM RADIUS ON ALL BENDS.
2. ALL ANGULAR BENDS 90 DEGREES.
3. REMOVE ALL BURRS AND SHARP EDGES.
4. MOUNT INSERTS AFTER FINISHING.



- HOLES -
- A - .161 - .164 DIA 4 REQ'D
 - B - 1/2 DIA 6 REQ'D
 - C - 11/64 X 11/32 SLOT 3 REQ'D
 - D - 11/64 DIA 4 REQ'D
 - E - 7/32 DIA 2 REQ'D

QTY. REQ.	ITEM	PART NO.	DESCRIPTION	SYMBOL
4	1	NT129-0440-3	NUT, ROUND	

THE TECHNICAL MATERIEL CORP.
MAMARONECK, NEW YORK

COVER, WRAP AROUND

1	AZ 102	
QTY / UNIT	MODEL USED ON	ASSY NO.
	APPLICATION	
	CODE	

UNLESS OTHERWISE SPECIFIED DIMENSIONS ARE IN INCHES AND INCLUDE CHEMICALLY APPLIED OR PLATED FINISHES	FINAL APPROVAL <i>GB</i>	DATE 1-7-81
TOLERANCES ON	ELECT. DES.	DATE
DECIMALS .X ± .05 .XX ± .01 .XXX ± .005	CHECKED	DATE
FRACTIONS ± 1/64 ANGLES ± 0° -30'	DRAWN GDL	DATE 1-7-81

MATERIAL 05174K ALUM.	SIZE	CODE	IDENT NO.	DWG NO.	ISSUE
FINISH 5404 VEL. IRIDITE	D	82679	MS 3922		H
	SCALE 1:1				SHEET OF

NOTICE TO PERSONS RECEIVING THIS DRAWING
THE TECHNICAL MATERIEL CORPORATION claims proprietary right in the material disclosed herein. This drawing is issued in confidence for engineering information only and may not be reproduced or used to manufacture anything shown hereon without permission from THE TECHNICAL MATERIEL CORPORATION to the user. This drawing is loaned for mutual assistance and is subject to recall at any time.

MS3922 H

A

N9990