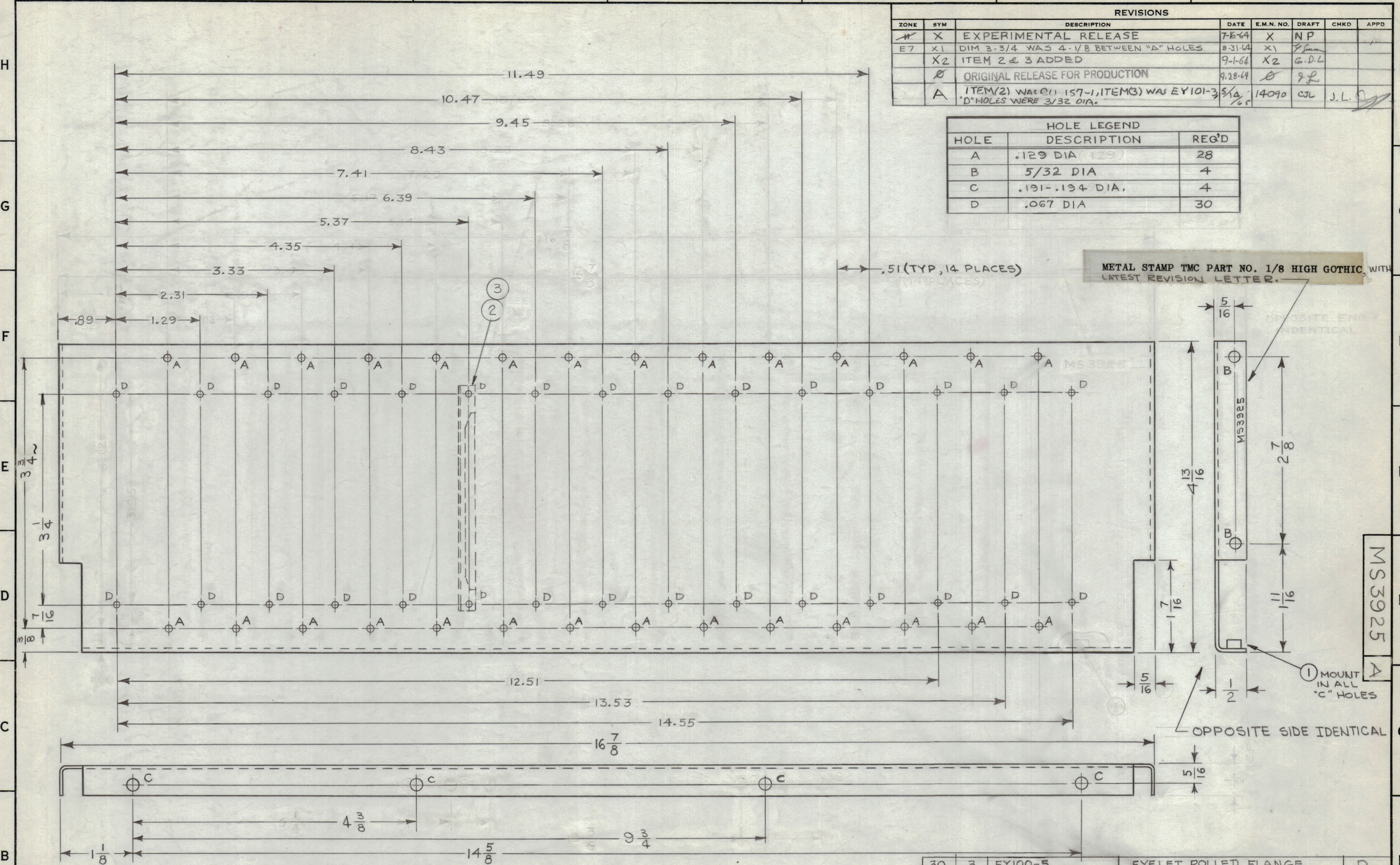


REVISIONS						
ZONE	SYM	DESCRIPTION	DATE	E.M.N. NO.	DRAFT	CHKD
X	X	EXPERIMENTAL RELEASE	7-6-64	X	NP	
E7	X1	DIM 3-3/4 WAS 4-1/8 BETWEEN "A" HOLES	8-31-64	X1	<i>E. Gellman</i>	
	X2	ITEM 2 & 3 ADDED	9-1-64	X2	G.D.L.	
	Ø	ORIGINAL RELEASE FOR PRODUCTION	9-28-64	Ø	9L	
A	A	ITEM(2) WAS Ø 1-157-1, ITEM(3) WAS EY101-3 "D" HOLES WERE 3/32 DIA.	5/12/65	14090	CJL	J.L.

HOLE LEGEND		
HOLE	DESCRIPTION	REQ'D
A	.129 DIA	28
B	5/32 DIA	4
C	.191-.194 DIA.	4
D	.067 DIA	30



METAL STAMP TMC PART NO. 1/8 HIGH GOTHIC, WITH LATEST REVISION LETTER.

MS3925
A

UNLESS OTHERWISE SPECIFIED:
 1. USE MATERIAL THICKNESS FOR MAXIMUM RADIUS ON ALL BENDS
 2. ALL ANGULAR BENDS 90 DEGREES
 3. REMOVE ALL BURRS AND SHARP EDGES
 4. MOUNT INSERTS AFTER FINISHING

REQ'D.	ITEM	PART NUMBER	DESCRIPTION	SYMBOL
30	3	EY100-5	EYELET, ROLLED FLANGE	D
15	2	CU157-4	RETAINER, P.C. BOARD	D
4	1	NT129-632-4	NUT, ROUND, SWAGE TYPE	C

M. GELLMAN LIST OF MATERIAL
 MATERIAL .064 ALUMINUM 5052-H32
 FINISH S404 YELLOW IRIDITE
 THE TECHNICAL MATERIEL CORP. MAMARONECK, NEW YORK
 TITLE GUIDE SUPPORT, FRONT

1 LFSB-1
 QTY./UNIT MODEL USED ON ASS'Y. NO.
 SCALE 1:1 CODE A
 THE CONTENTS OF THIS DRAWING ARE THE EXCLUSIVE PROPERTY OF THE TECHNICAL MATERIEL CORP. ITS UNAUTHORIZED USE OR REPRODUCTION IN WHOLE OR IN PART IS STRICTLY FORBIDDEN.

UNLESS OTHERWISE SPECIFIED DIMENSIONS ARE IN INCHES AND INCLUDE CHEMICALLY APPLIED OR PLATED FINISHES
 DECIMALS .X ± .05 XX ± .01 XXX ± .005 FRACTIONS ± 1/64 ANGLES ± 0° 30'
 DRAWN *M. Peters* DATE 7/16/64
 CHECKED *@* DATE 7/15/64
 ELECT. DES. DATE
 MECH. DES. DATE
 FINAL APPROVAL *RAC* DATE
 SHEET MS3925 A REV. LTR.