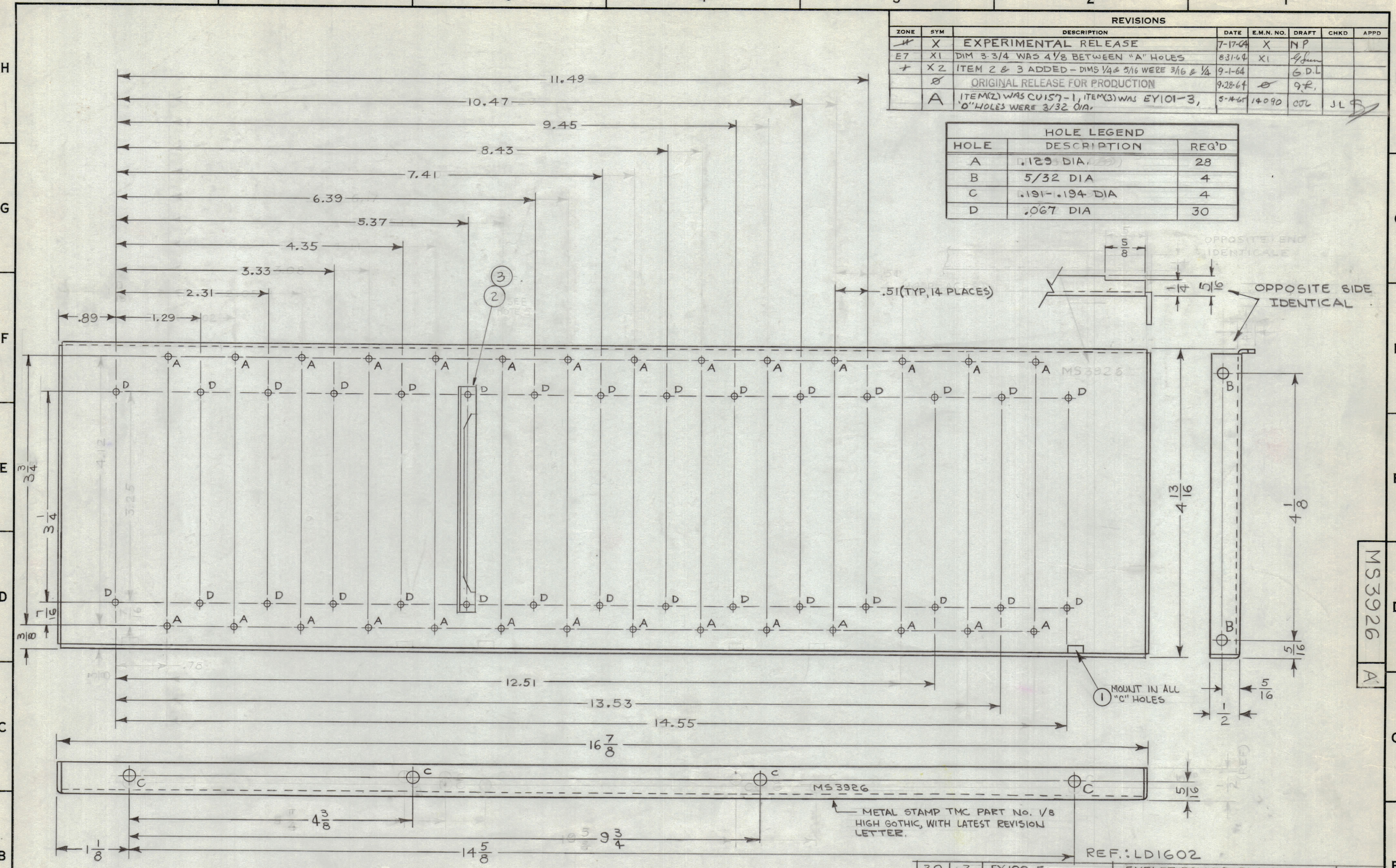


REVISIONS						
ZONE	SYM	DESCRIPTION	DATE	E.M.N. NO.	DRAFT	CHKD
X	X	EXPERIMENTAL RELEASE	7-17-64	X	NP	
E7	X1	DIM 3-3/4 WAS 4 1/8 BETWEEN "A" HOLES	8-31-64	X1	g.f.	
X2	X2	ITEM 2 & 3 ADDED - DIMS 1/4 & 5/16 WERE 3/16 & 1/4	9-1-64		G.D.L.	
		ORIGINAL RELEASE FOR PRODUCTION	9-28-64		g.f.	
A		ITEM(2) WAS CUI57-1, ITEM(3) WAS EY101-3, 'O' HOLES WERE 3/32 DIA.	5-14-65	14090	OTL	JL

HOLE LEGEND		
HOLE	DESCRIPTION	REQ'D
A	.129 DIA.	28
B	5/32 DIA	4
C	.191-.194 DIA	4
D	.067 DIA	30



NOTE: FOR BEND RADIUS USE

UNLESS OTHERWISE SPECIFIED:

1. USE MATERIAL THICKNESS FOR MAXIMUM RADIUS ON ALL BENDS
2. ALL ANGULAR BENDS 90 DEGREES
3. REMOVE ALL BURRS AND SHARP EDGES
4. MOUNT INSERTS AFTER FINISHING

REQ'D.	ITEM	PART NUMBER	DESCRIPTION	SYMBOL
30	3	EY100-5	EYELET, ROLLED FLANGE	D
15	2	CUI57-4	RETAINER, RC. BOARD	D
4	1	NT129-632-4	NUT, ROUND, SWAGE TYPE	C

M. GELLMAN		LIST OF MATERIAL	
MATERIAL .064 ALUMINUM 505 5052-H32		THE TECHNICAL MATERIEL CORP. MAMARONECK, NEW YORK	
FINISH 3404-YELLOW IRIDITE		TITLE GUIDE SUPPORT, REAR	
UNLESS OTHERWISE SPECIFIED DIMENSIONS ARE IN INCHES AND INCLUDE CHEMICALLY APPLIED OR PLATED FINISHES	DRAWN <i>A. Peters</i> DATE 7/17/64	FINAL APPROVAL <i>OTL</i>	DATE
TOLERANCES DECIMALS .X ± .05 .XX ± .01 .XXX ± .005 FRACTIONS ± 1/64 ANGLES ± 0° 30'	CHECKED <i>@</i> DATE 9-15-64	MS3926 A	
	ELECT. DES. DATE	MECH. DES. <i>M. Gellman</i> DATE 9-28-64	SHEET
			REV. LTR.

1	LLFSB-1	ASSY. NO.
Q'TY./UNIT	MODEL USED ON	
SCALE 1:1	CODE A	
THE CONTENTS OF THIS DRAWING ARE THE EXCLUSIVE PROPERTY OF THE TECHNICAL MATERIEL CORP. ITS UNAUTHORIZED USE OR REPRODUCTION IN WHOLE OR IN PART IS STRICTLY FORBIDDEN.		

NOTES