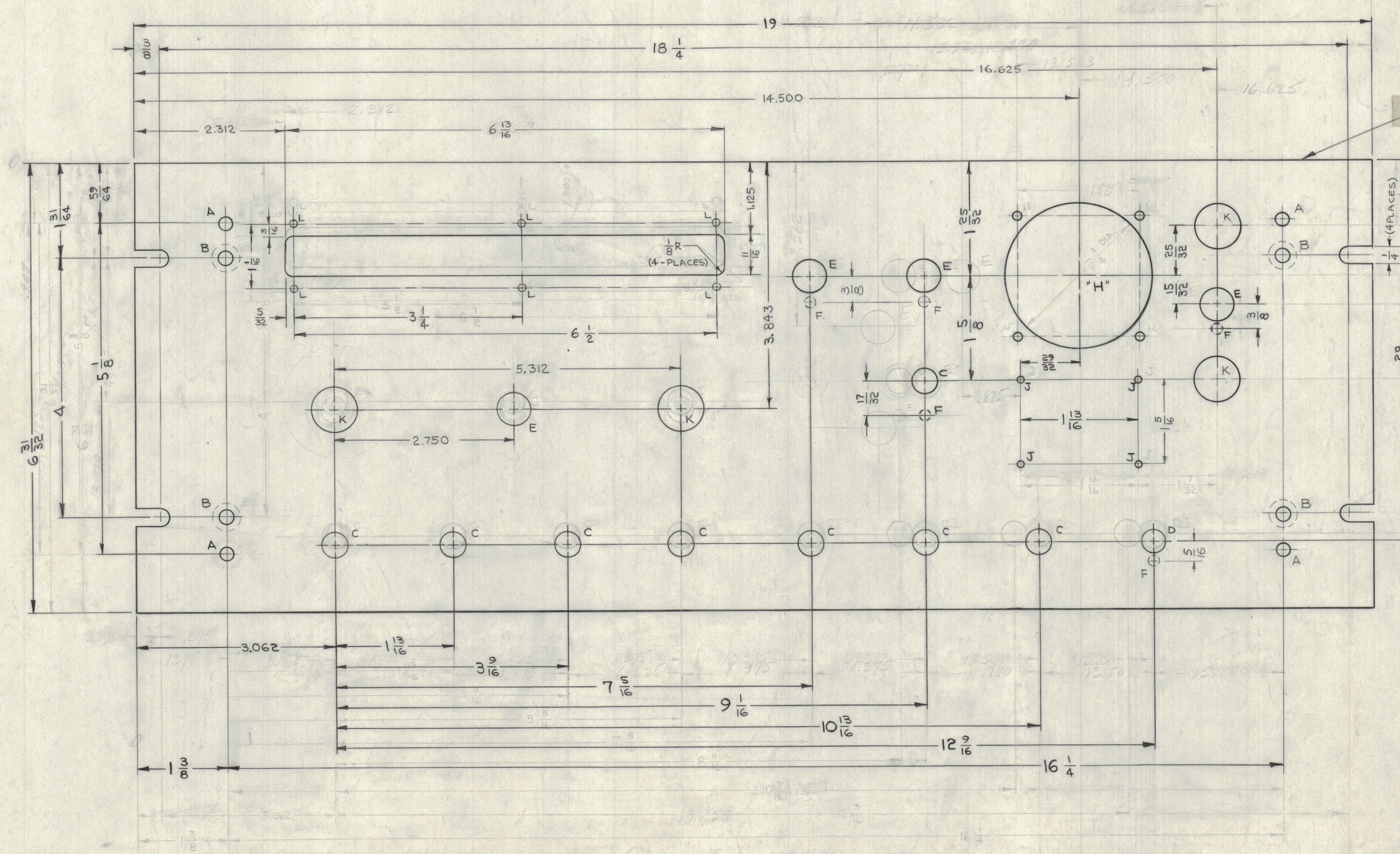
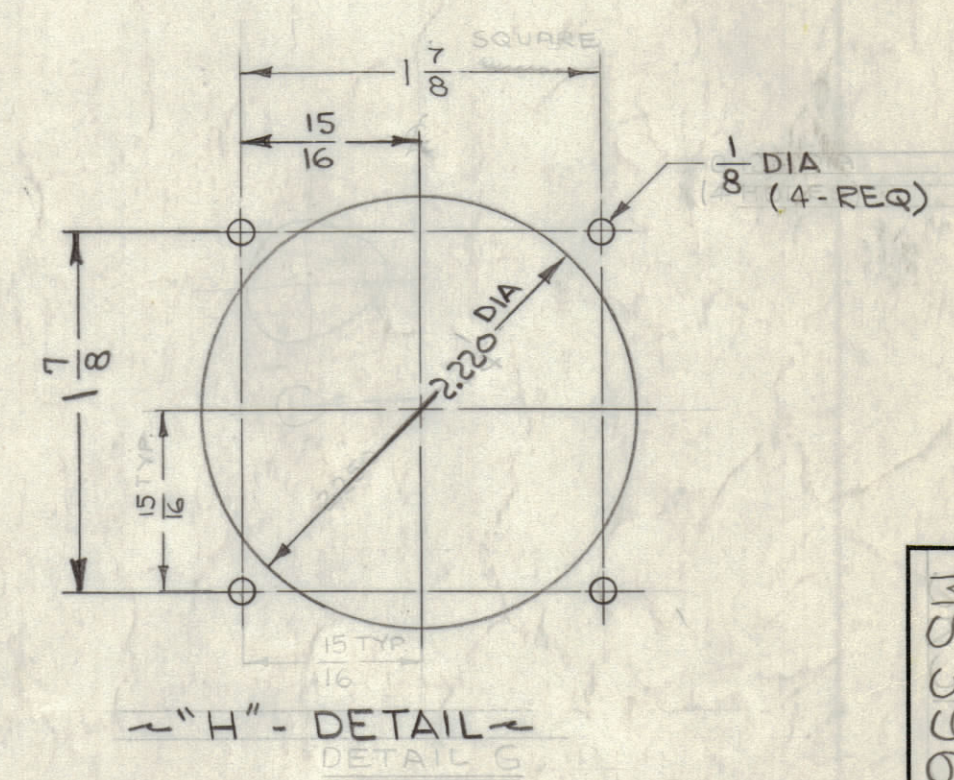


REVISIONS						
ZONE	SYM	DESCRIPTION	DATE	E.M.N. NO.	DRAFT	CHKD
	X	EXPERIMENTAL RELEASE	6.13.64		WJB	
E8	X1	6" L HOLES RELOCATED DIM. 1 WAS 1/8", DIM 2/16 WAS 3/8"	6.24.64		WJB	
E4-CA E8	X2	3" F HOLES ADDED - DEEP OF F HOLES WAS 1/16" 2" L HOLES RELOCATED	7.2.64		WJB	
D.E.9.8.6	X3	6" L WAS 4.750, 3/32 WAS 1/8", 1/16 W. 3/8, 1" W. 1", "L" WAS 2.4 DIA	7.9.64		WJB	
	X	ORIGINAL RELEASE FOR PRODUCTION	8.3.64		WJB	
D2	A	DET "H", 2.220 DIA. HOLE WAS 2 1/4 DIA	2.10.65	13420	WJB	

HOLE	DESCRIPTION	REQ
A	.7/32 DIA	4
B	.196 DIA., C'SINK 82° TO .390 DIA. ON REAR	4
C	3/8 DIA.	8
D	25/64 DIA.	1
E	1/2 DIA.	4
F	.156 DIA. ON REAR, 3/32 DR	5
G	DELETED	
H	SEE DETAIL	1
J	.076 DIA.	4
K	11/16 DIA	4
L	TAP 3-48	6



METAL STAMP TMC PART NO. 1/8 HIGH GOTHIC ON REAR OF PANEL WITH LATEST REVISION LETTER.



FINISH NOTES:

- S404 - IRIDITE 14-2 AL-COAT.
- S114 - ZINC CHROMATE PRIMER) FRONT AND
- S115 - SMOOTH GRAY ENAMEL) EDGES ONLY

MACHINING:

- MILL ALL EDGES.
- HOLES MUST BE DRILLED, UNLESS OTHERWISE SPECIFIED.
- LATERAL BOW OF PANEL MUST BE KEPT TO .031 TOLERANCE.
- PANEL MUST BE FREE OF ALL MACHINING MARKS, GOUGES AND SCRATCHES. IF NECESSARY, SAND FRONT OF PANEL WITH NO. 120 GRIT SANDPAPER.

NOTES

1	VLEB-1	
QTY./UNIT	MODEL USED ON	ASSY. NO.
SCALE	CODE	
1:1	A	

REF: LD1581

REQ'D.	ITEM	PART NUMBER	DESCRIPTION	SYMBOL
GELLMAN LIST OF MATERIAL SK3136-MS-1				
MATERIAL		THE TECHNICAL MATERIEL CORP.		
3/16THK ALUMINUM		MAMARONECK, NEW YORK		
2024-T3		TITLE		
FINISH		PANEL, FRONT		
SEE FINISH NOTES		DRAWN		
UNLESS OTHERWISE SPECIFIED		DATE		
DIMENSIONS ARE IN INCHES AND INCLUDE		DATE		
CHEMICALLY APPLIED OR PLATED FINISHES		DATE		
DECIMALS		ELECT. DES.		
XX ± .05		DATE		
XXX ± .01		DATE		
ANGLES		DATE		
XXX ± .005		DATE		
TOLERANCES		DATE		
± 1/64		DATE		
± .005		DATE		

MS 3960 A