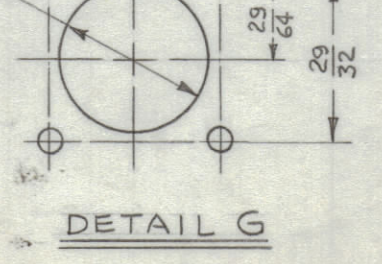
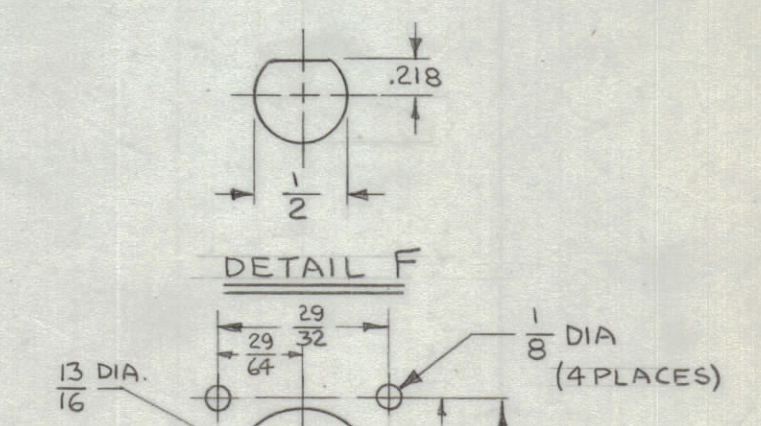
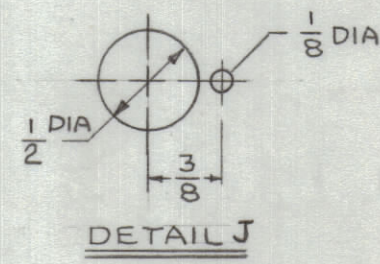
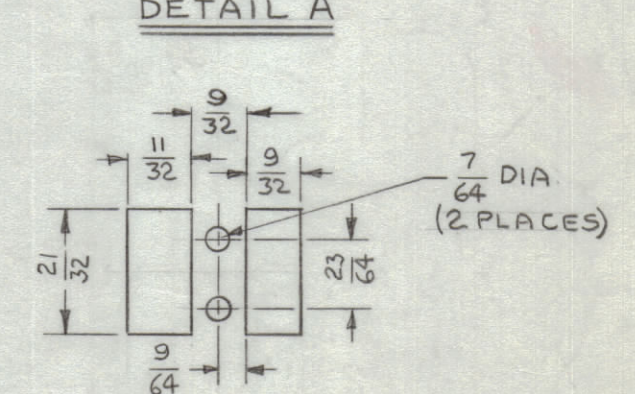
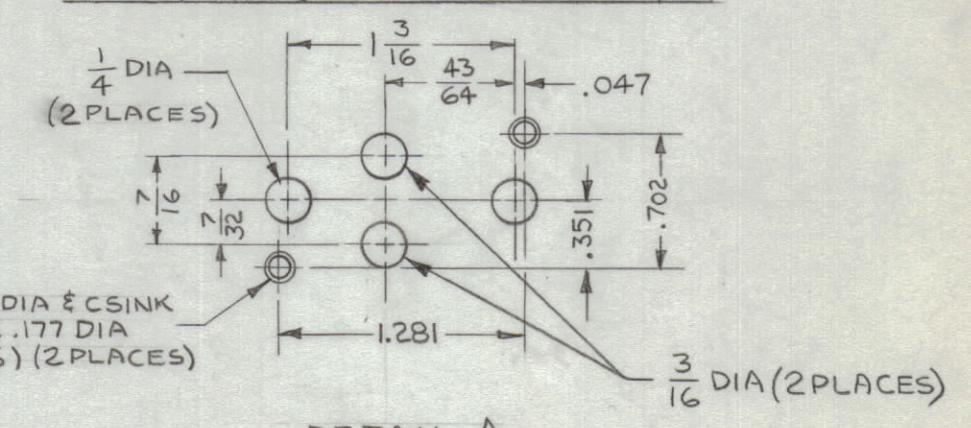
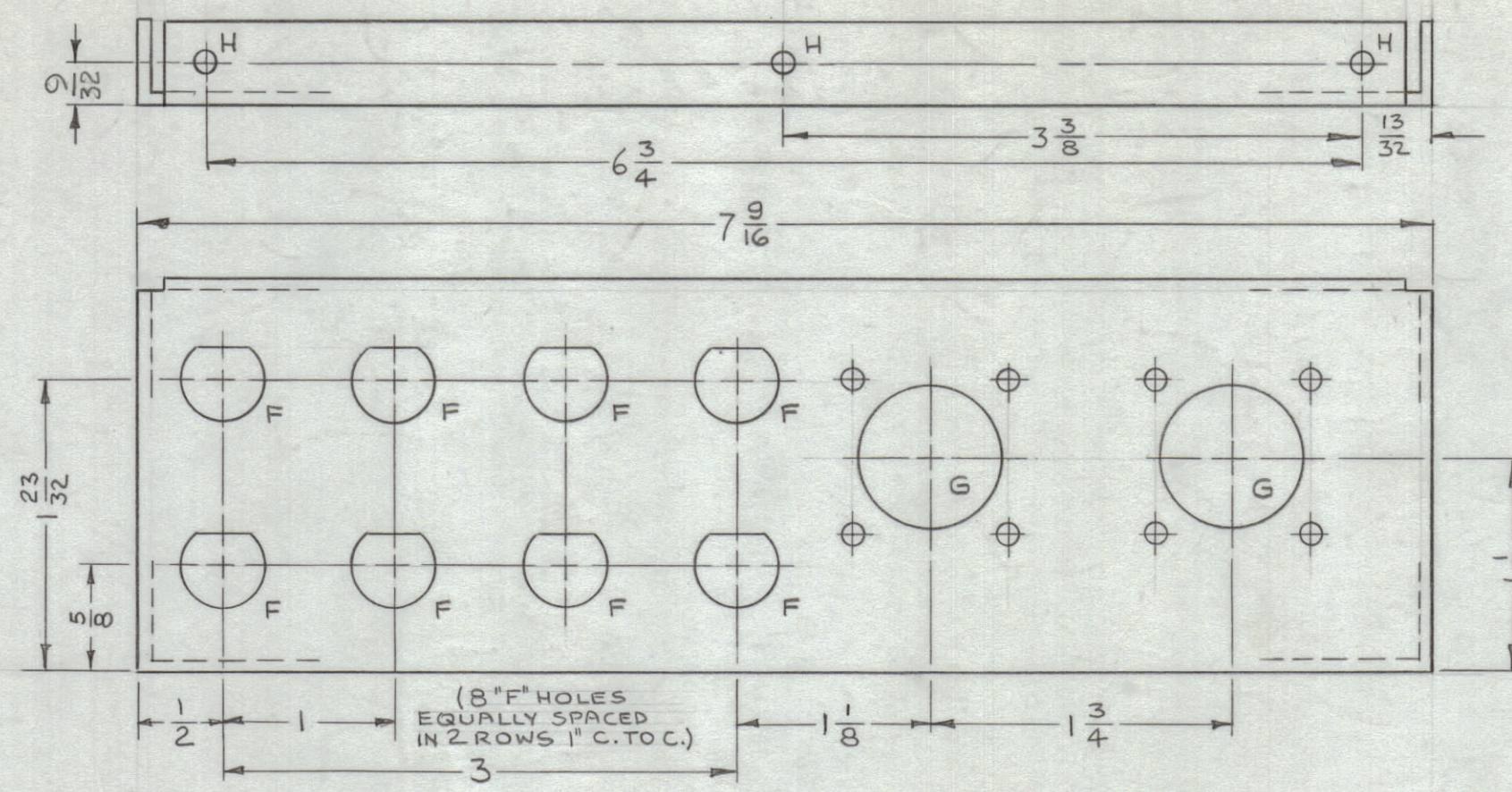
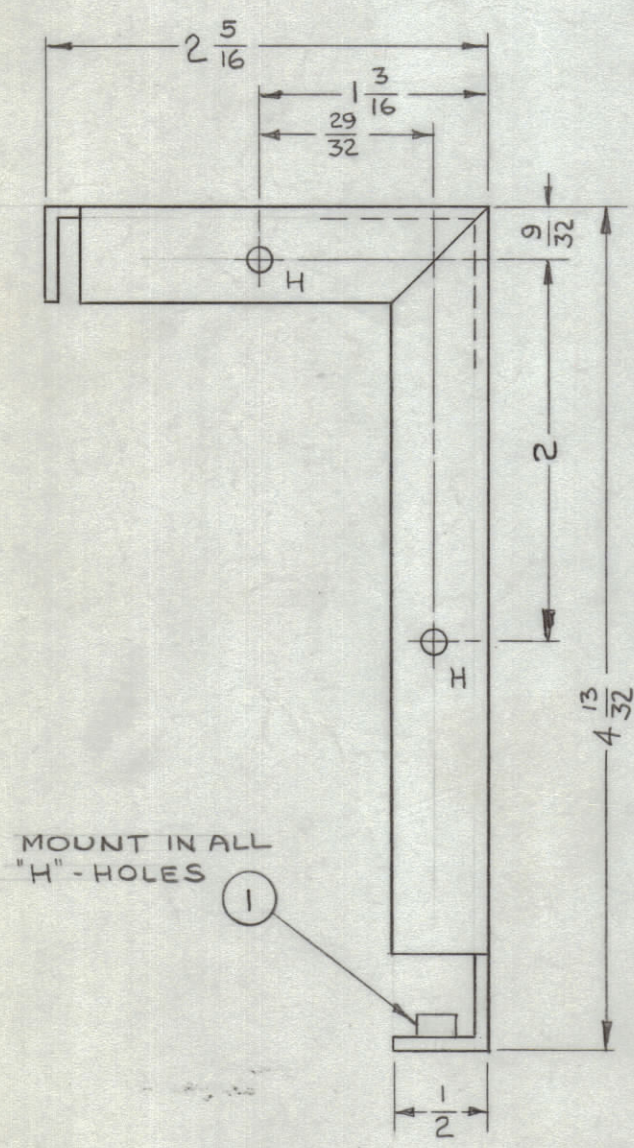


REVISIONS						
ZONE	SYM	DESCRIPTION	DATE	E.M.N. NO.	DRAFT	CHKD
#	X	EXPERIMENTAL RELEASE	6.15.64		WJB	
#	X1	ON TOP LIP 9/32 WAS 1/4 - DIM. FOR "E" HOLE 3" WAS 3/16 - DIM. 15/16 ADDED	7.2.64		G.D.L.	
#	X2	ONE C HOLE RELOCATED QUAN. OF C HOLES WAS 8	7-10-64		SPB	
#	Ø	ORIGINAL RELEASE FOR PRODUCTION	8.3.64		WJB	
#	A	CLERICAL CHANGE	12.30.64		WJB	
C4	B	"L" HOLE LOC. DIM. ADD.	2.3.65	13388	WJB	
D5	C	"C" HOLE LOC. DIM. ADD.	3.29.65	13739	WJB	

HOLE	DESCRIPTION	REQ.
A	SEE DETAIL	3
B	SEE DETAIL	1
C	5/32 DIA	9
D	9/32 DIA	1
E	1" DIA	2
F	SEE DETAIL	8
G	SEE DETAIL	2
H	.161-.164 DIA.	7
J	SEE DETAIL	1
K	7/32 DIA.	1
L	13/64 (.203) DIA.	1



METAL STAMP TMC PART NO. 1/8 HIGH GOTHIC, WITH LATEST REVISION LETTER.



MOUNT IN ALL "H" HOLES

- UNLESS OTHERWISE SPECIFIED:
1. USE MATERIAL THICKNESS FOR MAXIMUM RADIUS ON ALL BENDS.
  2. ALL ANGULAR BENDS 90°.
  3. REMOVE ALL BURRS AND SHARP EDGES.
  4. MOUNT INSERTS AFTER FINISHING.

NOTES

1	VLRB-1	
Q'TY/UNIT	MODEL USED ON	ASSY. NO.
SCALE	CODE	
1:1	A	
THE CONTENTS OF THIS DRAWING ARE THE EXCLUSIVE PROPERTY OF THE TECHNICAL MATERIEL CORP. ITS UNAUTHORIZED USE OR REPRODUCTION IN WHOLE OR IN PART IS STRICTLY FORBIDDEN.		

REF: LD1586

7	1	NT129-440-4	NUT, ROUND SWAGE TYPE	H
REQ'D.	ITEM	PART NUMBER	DESCRIPTION	SYMBOL
GELLMAN		LIST OF MATERIAL		SK3136-MS-3
MATERIAL		THE TECHNICAL MATERIEL CORP.		
.081 ALUMINUM 5052 H32		MAMARONECK, NEW YORK		
FINISH		TITLE		
5404 YELLOW IRIDITE		CHASSIS (POWER SUPPLY)		
UNLESS OTHERWISE SPECIFIED DIMENSIONS ARE IN INCHES AND INCLUDE CHEMICALLY APPLIED OR PLATED FINISHES		DRAWN	DATE	FINAL APPROVAL
DECIMALS .X ± .05 .XX ± .01 .XXX ± .005		WJB	6.15.64	RJC
FRACTIONS ± 1/64 ANGLES ± 0° 30'		CHECKED	DATE	
TOLERANCES		WJB	8-3-64	
		ELECT. DES.	DATE	
		MECH. DES.	DATE	
		WJB	7-3-64	
		SHEET		

MS3961

REV. LTR.