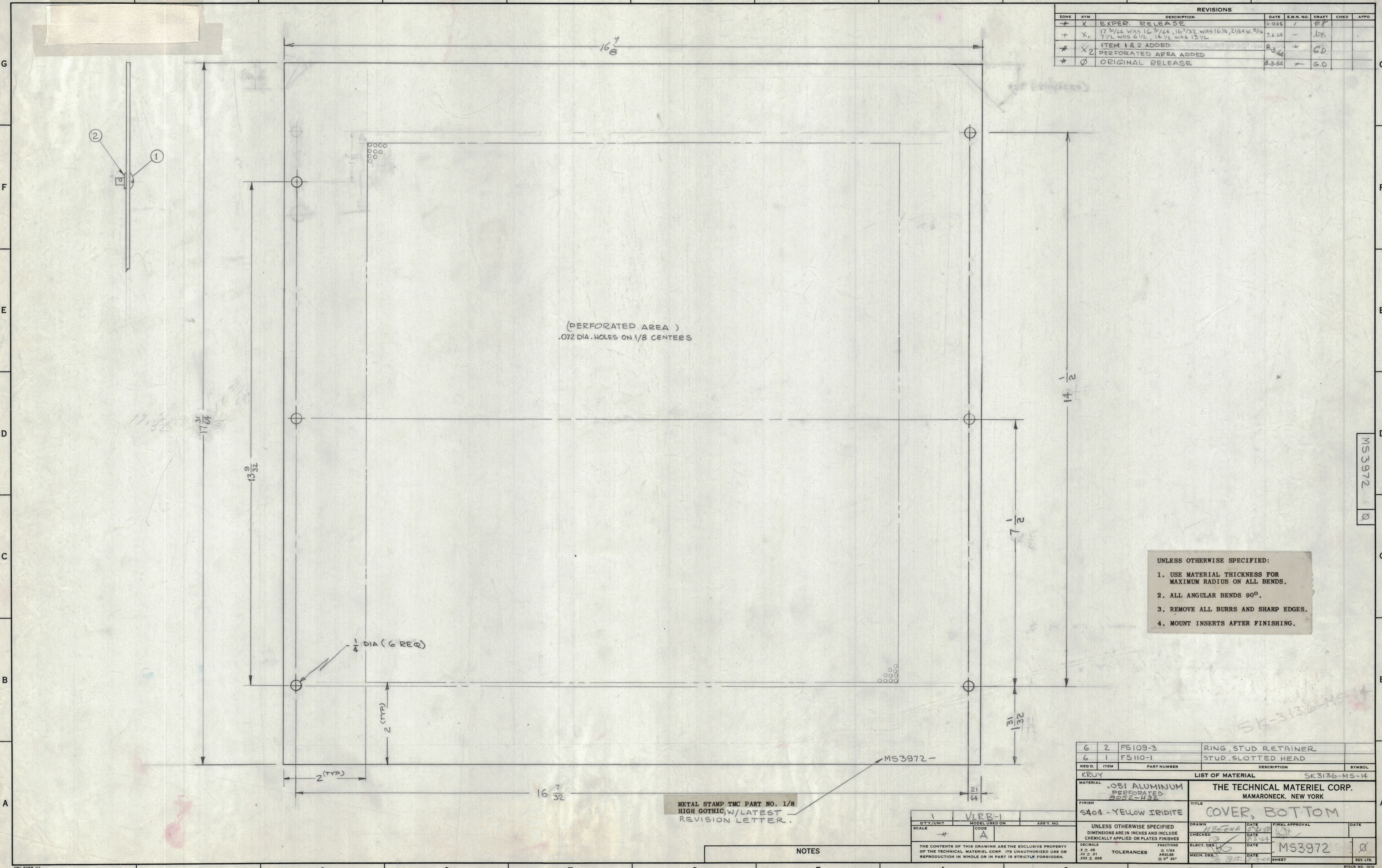


REVISIONS						
ZONE	SYM	DESCRIPTION	DATE	E.M.N. NO.	DRAFT	APPD
+	X	EXPER. RELEASE	6-18-64	1	EP	
+	X1	17 31/64 WAS 16 31/64, 16 7/32 WAS 16 1/8, 21 1/4 WAS 21 1/8	7-6-64		WFB	
+	X2	ITEM 1 & 2 ADDED FOR REPRODUCTION	8-3-64		GD	
+	Ø	PERFORATED AREA ADDED	8-3-64		GD	
+	Ø	ORIGINAL RELEASE	8-3-64		GD	



- UNLESS OTHERWISE SPECIFIED:
1. USE MATERIAL THICKNESS FOR MAXIMUM RADIUS ON ALL BENDS.
 2. ALL ANGULAR BENDS 90°.
 3. REMOVE ALL BURRS AND SHARP EDGES.
 4. MOUNT INSERTS AFTER FINISHING.

REQ'D.	ITEM	PART NUMBER	DESCRIPTION	SYMBOL
6	2	FS109-3	RING, STUD RETAINER	
6	1	FS110-1	STUD, SLOTTED HEAD	

MATERIAL		LIST OF MATERIAL	
.051 ALUMINUM PERFORATED 5052-H32		SK3136-MS-14	
FINISH S404-YELLOW IRIDITE		TITLE COVER, BOTTOM	

QTY./UNIT	MODEL USED ON	ASBY. NO.
1	VLRB-1	

SCALE	CODE	DATE	DATE	DATE
1	A	8-2-64	8-2-64	8-2-64

DECIMALS	FRACTIONS	ELECT. DES.	DATE	DATE
.x ± .05	± 1/64	WFB	8-2-64	8-2-64
.xx ± .01	± 1/32	GD	8-3-64	8-3-64
.xxx ± .005	± 0° 30'			

UNLESS OTHERWISE SPECIFIED	DIMENSIONS ARE IN INCHES AND INCLUDE	CHEMICALLY APPLIED OR PLATED FINISHES
TOLERANCES		

THE CONTENTS OF THIS DRAWING ARE THE EXCLUSIVE PROPERTY OF THE TECHNICAL MATERIEL CORP. ITS UNAUTHORIZED USE OR REPRODUCTION IN WHOLE OR IN PART IS STRICTLY FORBIDDEN.	STOCK NO. 1015
MS3972 -	MS3972 - Ø

NOTES

MS3972

SK-3136-MS-14