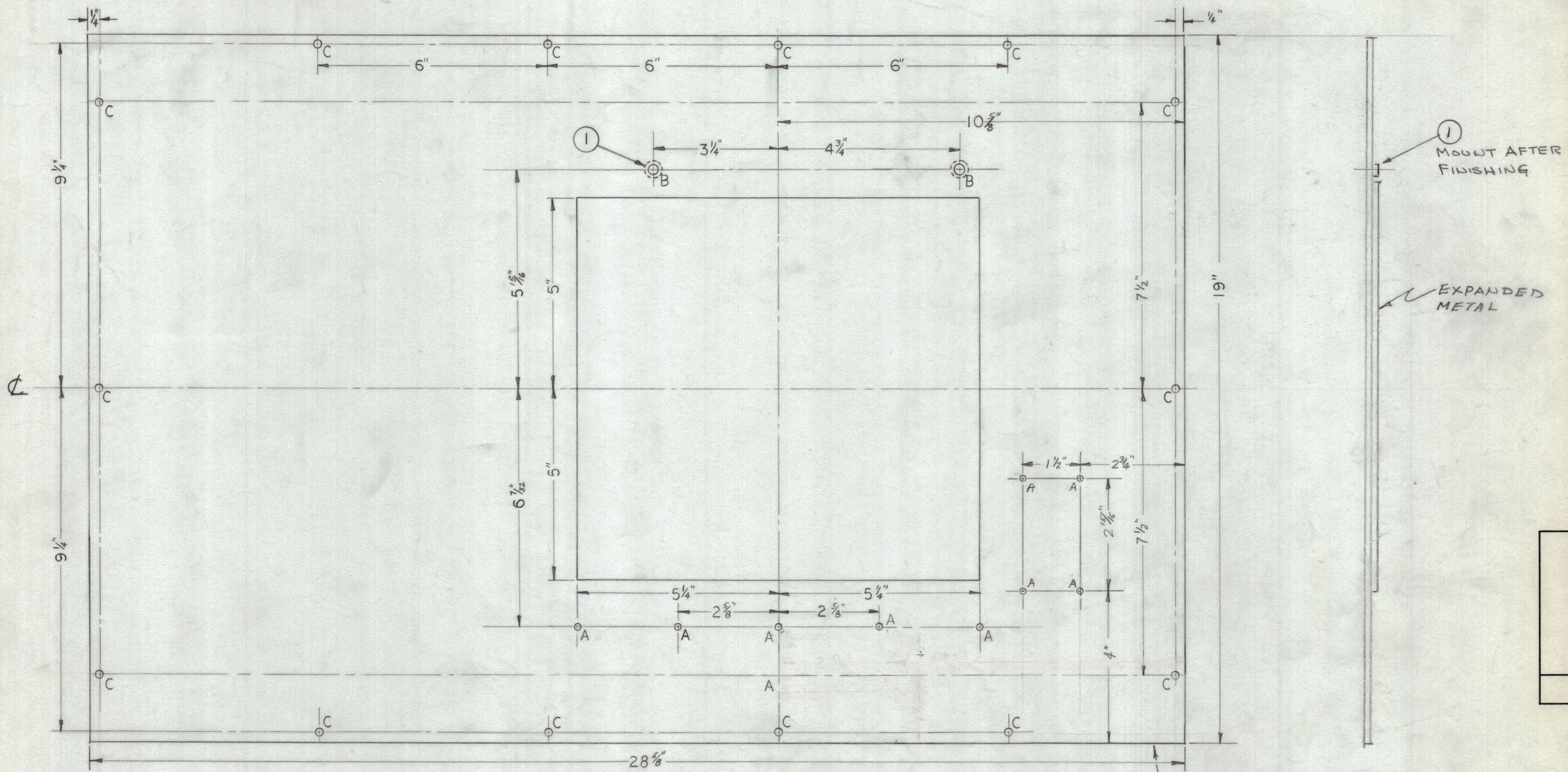


PRELIMINARY DRAWING

REVISIONS						
ZONE	SYM	DESCRIPTION	DATE	E.M.N. NO.	DRAFT	CHKD APPD
XI		'B' HLS WERE 1/4 DIA 'C' HLS WERE 13/64 DIA.				
		ORIGINAL RELEASE FOR PRODUCTION	12/8/65			



- A - 1/64" DIA. 9 REQ.
- B - .250 DIA. +MT. NT129-1032-3 2 REQ. REVERSE SIDE
- C - 15/64" DIA. 14 REQ.

FABRICATION NOTE:
 10" X 10 1/2" CUT OUT COVERED
 W/ EXPANDED METAL ON
 REVERSE SIDE

METAL STAMP TMC
 PT NO 1/8 HIGH
 GOTHIC, ON REVERSE
 SIDE, W/LATEST
 REVISION LETTER.

REF. MS 4024

NOTES

1	RAK 106	A-4081
Q'TY./UNIT	MODEL USED ON	ASS'Y. NO.
SCALE	CODE	

THE CONTENTS OF THIS DRAWING ARE THE EXCLUSIVE PROPERTY OF THE TECHNICAL MATERIEL CORP. ITS UNAUTHORIZED USE OR REPRODUCTION IN WHOLE OR IN PART IS STRICTLY FORBIDDEN.

2	1	NT129-1032-3	NUT, ROUND, SWAGE TYPE	
REQ'D.	ITEM	PART NUMBER	DESCRIPTION	SYMBOL
STURMER LIST OF MATERIAL				
MATERIAL			THE TECHNICAL MATERIEL CORP. MAMARONECK, NEW YORK	
0016 GA. STEEL			TITLE PANEL REAR	
FINISH DEGREASE, S114, S520			DRAWN MHS DATE 12-3-65	
UNLESS OTHERWISE SPECIFIED DIMENSIONS ARE IN INCHES AND INCLUDE CHEMICALLY APPLIED OR PLATED FINISHES			FINAL APPROVAL [Signature] DATE 12/6/65	
DECIMALS .X ± .05 .XX ± .01 .XXX ± .005			ELECT. DES. [Signature] DATE 11/3/65	
FRACTIONS TOLERANCES ± 1/64 ANGLES ± 0° 30'			MECH. DES. [Signature] DATE 11/3/65	
			SHEET MS 4025	
			REV. LTR.	