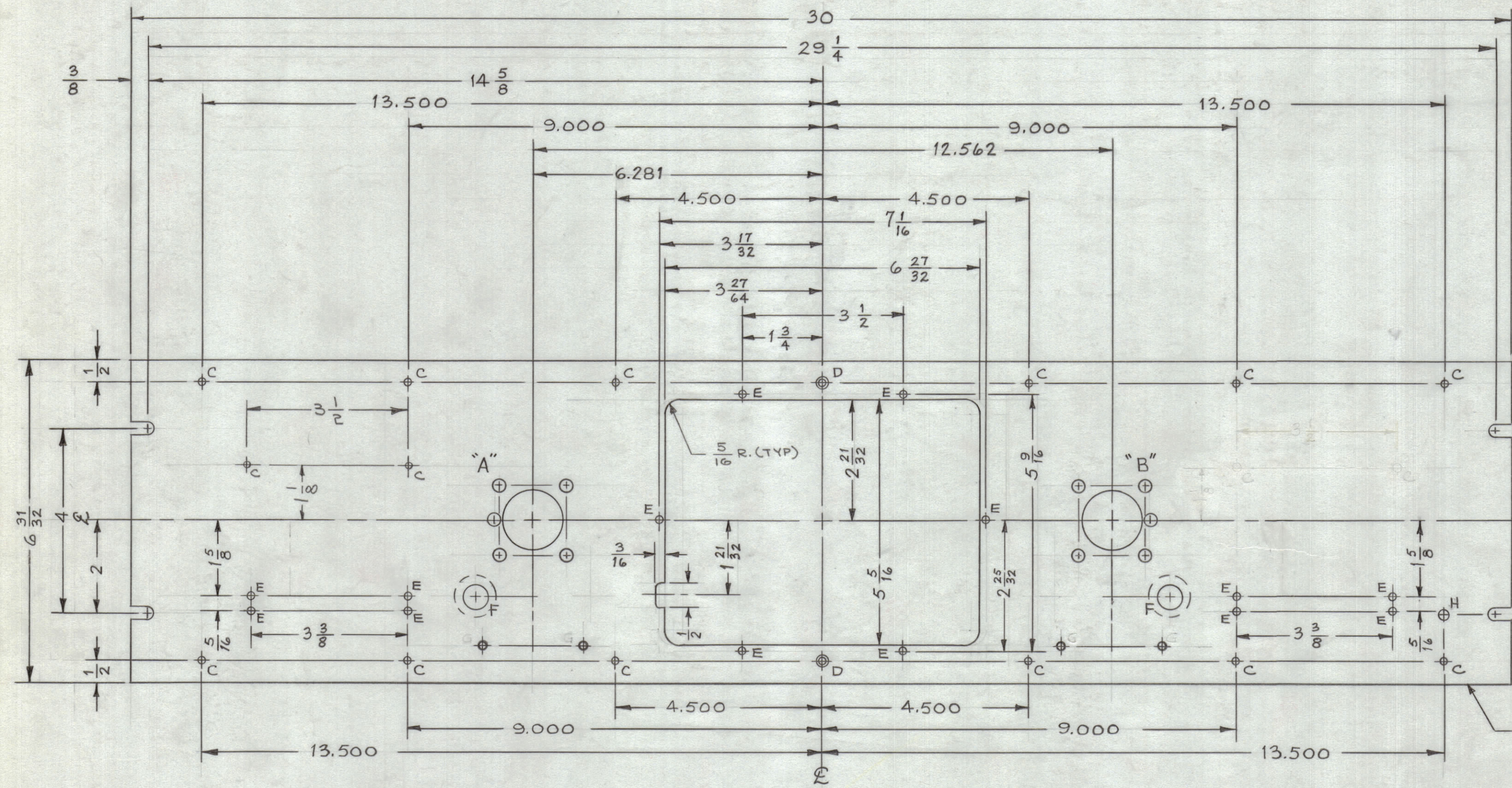
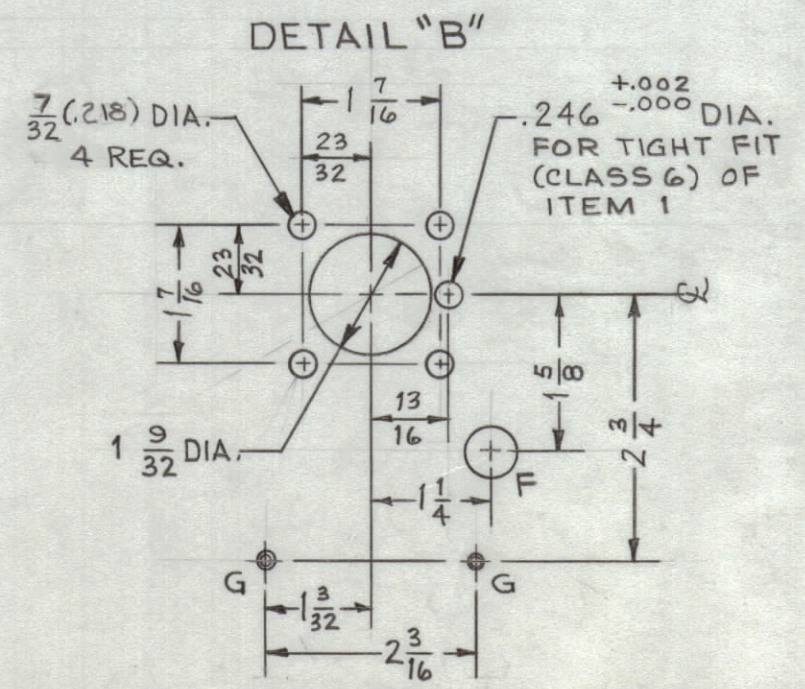
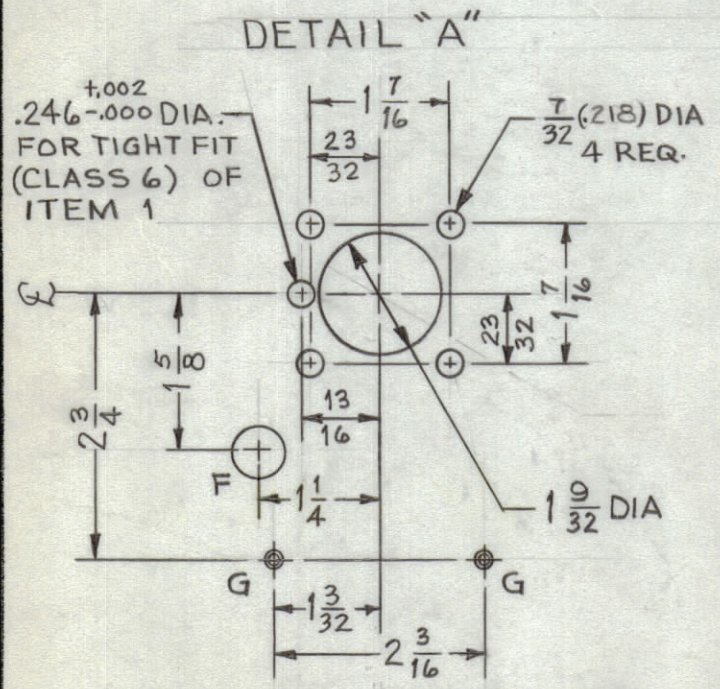


| REVISIONS | | | | | | |
|-----------|-----|--|----------|------------|--------------------|--------------------|
| ZONE | SYM | DESCRIPTION | DATE | E.M.N. NO. | DRAFT | APPD |
| | | ORIGINAL RELEASE FOR PRODUCTION | 10-13-64 | | G.D.L. | |
| # | A | (2) "C" HOLES RELOCATED; ON "A" & "B" DETAIL, 7/32 DIA HOLES WERE 3/32; 5/16 R ADDED TO DE. CUTOUT (2) "F" HOLES WERE 1/2 DIA. | 3-22-65 | 13678 | <i>[Signature]</i> | <i>[Signature]</i> |



METAL STAMP TMC PART NO. MS-4027 ON REAR OF PANEL 1/8 HIGH GOTHIC, W/LATEST REVISIONS.



LEGEND

| HOLE | DESCRIPTION | REQ. |
|------|--|------|
| A | DETAIL "A" | 1 |
| B | DETAIL "B" | 1 |
| C | .144 DIA. | 14 |
| D | .144 DIA. C'SINK 82° TO .284 DIA. | 2 |
| E | 1/8 (.125) DIA. | 14 |
| F | 7/16 DIA. C'BORE FR. REAR 7/8 DIA X 3/32 DEEP | 2 |
| G | DRILL & TAP FOR 3-48 & C'SINK 82° TO .204 DIA. (FRONT OF PANEL) | 4 |
| H | 13/64 DIA. | 1 |

MACHINING:

- MILL ALL EDGES.
- HOLES MUST BE DRILLED, UNLESS OTHERWISE SPECIFIED.
- LATERAL BOW OF PANEL MUST BE KEPT TO .031 TOLERANCE.
- PANEL MUST BE FREE OF ALL MACHINING MARKS, GOUGES AND SCRATCHES. IF NECESSARY, SAND FRONT OF PANEL WITH NO. 120 GRIT SANDPAPER.

NOTE 1. MOUNT ITEM 1 AS SHOWN AFTER FINISHING (2 PLACES).

FINISH NOTES:

- S404 - IRIDITE 14-2 AL-COAT.
- S114 - ZINC CHROMATE (PRIMER) FRONT AND
- S115 - SMOOTH GRAY ENAMEL) EDGES ONLY

NOTES

REF: LD 1807

| | | | | |
|---|------|-------------|--|------------------------|
| 2 | 1 | BB-115 | BEARING, OILITE | |
| REQ'D. | ITEM | PART NUMBER | DESCRIPTION | SYMBOL |
| MARTINENGO LIST OF MATERIAL | | | | |
| MATERIAL ALUMINUM - 3/16 2024-T3 | | | THE TECHNICAL MATERIEL CORP. MAMARONECK, NEW YORK | |
| FINISH SEE NOTES | | | TITLE PANEL, FRONT | |
| UNLESS OTHERWISE SPECIFIED DIMENSIONS ARE IN INCHES AND INCLUDE CHEMICALLY APPLIED OR PLATED FINISHES | | | DRAWN M TANTILLO | DATE 7-15-64 |
| DECIMALS .X ± .05 .XX ± .01 .XXX ± .005 | | | CHECKED @ | DATE 10-13-64 |
| FRACTIONS ± 1/64 ANGLES ± 0° 30' | | | ELECT. DES. DATE | FINAL APPROVAL DATE |
| TOLERANCES | | | MECH. DES. DATE | MS-4027 |
| SCALE 1:2 | | | CODE A | ASS'Y. NO. |
| THE CONTENTS OF THIS DRAWING ARE THE EXCLUSIVE PROPERTY OF THE TECHNICAL MATERIEL CORP. ITS UNAUTHORIZED USE OR REPRODUCTION IN WHOLE OR IN PART IS STRICTLY FORBIDDEN. | | | | |
| SHEET | | | | REV. LTR. A |

MS-4027 A