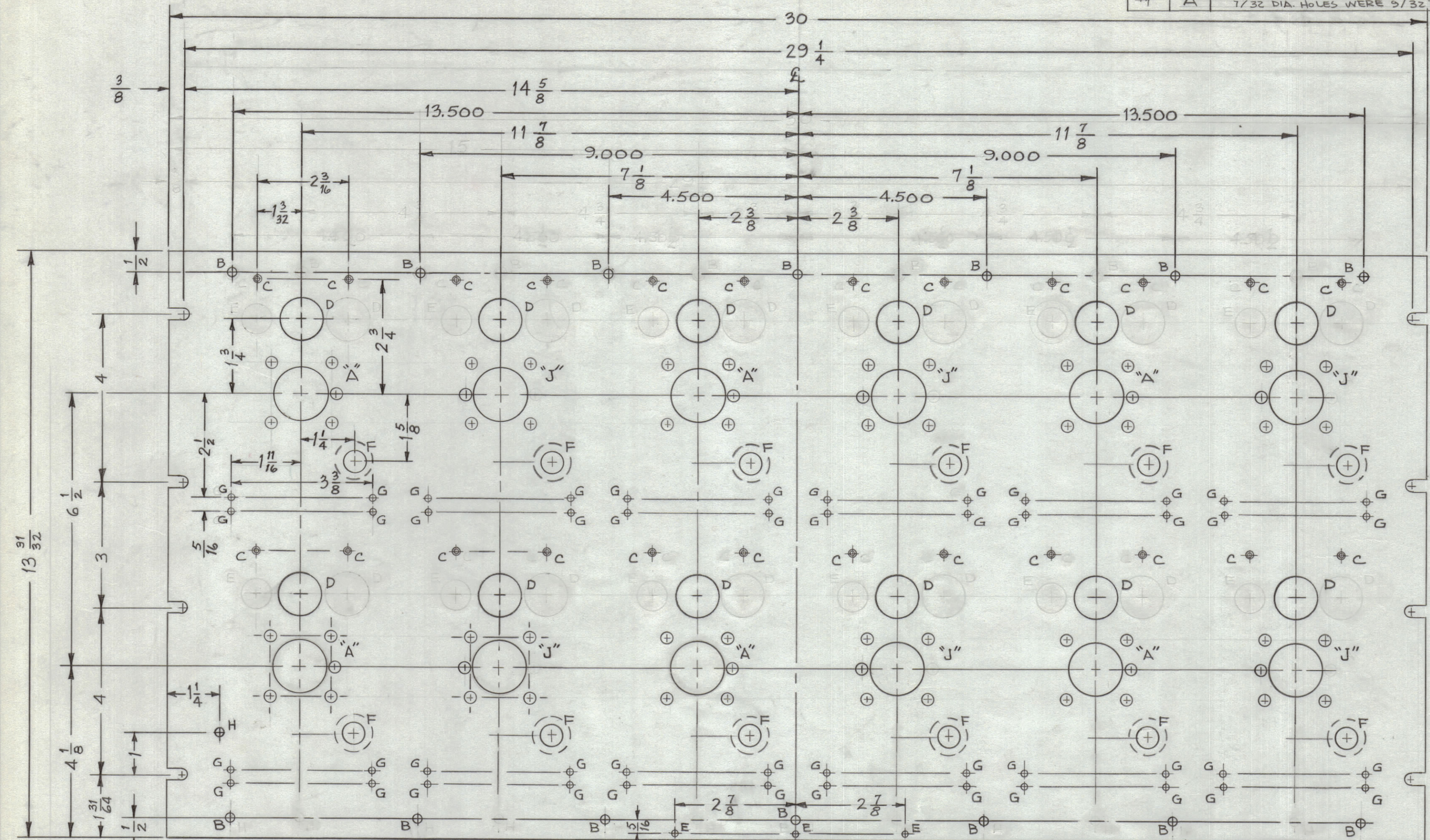


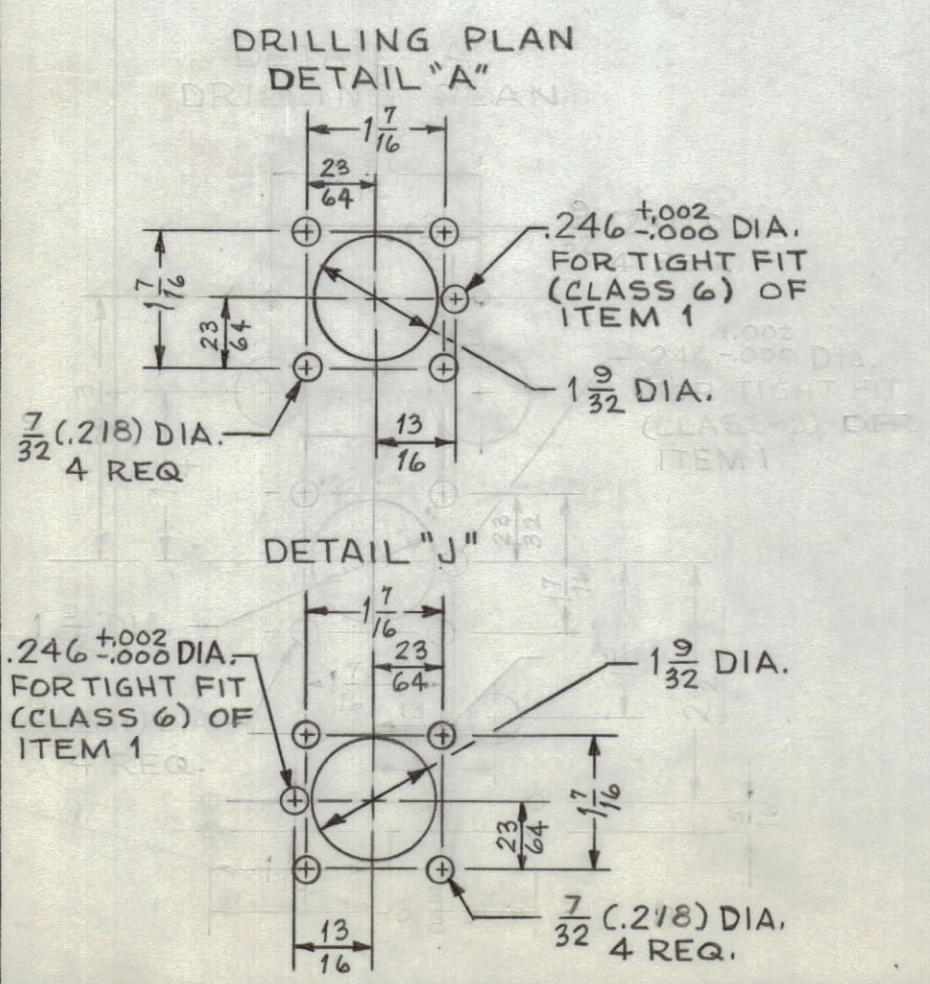
REVISIONS						
ZONE	SYM	DESCRIPTION	DATE	E.M.N. NO.	DRAFT	CHKD APPD
		ORIGINAL RELEASE FOR PRODUCTION	10-13-64		G.D.L.	
-4	A	(12) "F" HOLES WERE 1/2 DIA; ON "A" & "J" DETAILS, 7/32 DIA. HOLES WERE 3/32 DIA.	3-22-65	13681	<i>[Signature]</i>	



ITEM 1
(SEE NOTE 1)

METAL STAMP TMC PART NO. MS-4028 ON REAR OF PANEL 1/8 HIGH GOTHIC W/LATEST REVISION

MS-4028 A



MACHINING:

- MILL ALL EDGES.
- HOLES MUST BE DRILLED, UNLESS OTHERWISE SPECIFIED.
- LATERAL BOW OF PANEL MUST BE KEPT TO .031 TOLERANCE.
- PANEL MUST BE FREE OF ALL MACHINING MARKS, GOUGES AND SCRATCHES. IF NECESSARY SAND FRONT OF PANEL WITH No. 120 GRIT SANDPAPER.

FINISH NOTES:

- S404 - IRIDITE 14-2 AL-COAT.
- S114 - ZINC CHROMATE PRIMER } FRONT AND
- S115 - SMOOTH GRAY ENAMEL } EDGES ONLY

NOTE:

- MOUNT ITEM 1 AS SHOWN AFTER FINISHING (12 PLACES).
- TOLERANCE ARE NOT ACCUMULATIVE

HOLE	DESCRIPTION	REQ
A	SEE DETAIL "A"	6
B	.144 DIA.	14
C	DRILL & TAP FOR 3-48 & C'SK 82° TO .204 DIA. (FRONT OF PANEL)	24
D	1.000 DIA.	12
E	.070 DIA.	3
F	7/16 DIA. C-BORE FR. REAR 7/8 DIA. 3/32 DEEP	12
G	1/8 (.125) DIA.	48
H	13/64 DIA.	1
J	SEE DETAIL "J"	6
K	.070 DIA.	3

12		1	BB-115	BEARING, OILITE
REQ'D.	ITEM	PART NUMBER	DESCRIPTION	SYMBOL
MARTINENGO LIST OF MATERIAL				
MATERIAL		THE TECHNICAL MATERIEL CORP.		
ALUMINUM 3/16		MAMARONECK, NEW YORK		
2024-T3		TITLE		
SEE NOTES		PANEL, FRONT ANTERNA		
UNLESS OTHERWISE SPECIFIED DIMENSIONS ARE IN INCHES AND INCLUDE CHEMICALLY APPLIED OR PLATED FINISHES		DRAWN	DATE	FINAL APPROVAL
		M. TANTILLO	7-28-64	<i>[Signature]</i>
		CHECKED	DATE	
			10-13-64	
DECIMALS: .X ± .05, .XX ± .01, .XXX ± .005		ELECT. DES.	DATE	
FRACTIONS: ± 1/64 ANGLES: ± 0° 30'		MECH. DES.	DATE	
TOLERANCES			10-13-64	
			SHEET	
			MS-4028	
			REV. LTR.	A

THE CONTENTS OF THIS DRAWING ARE THE EXCLUSIVE PROPERTY OF THE TECHNICAL MATERIEL CORP. ITS UNAUTHORIZED USE OR REPRODUCTION IN WHOLE OR IN PART IS STRICTLY FORBIDDEN.