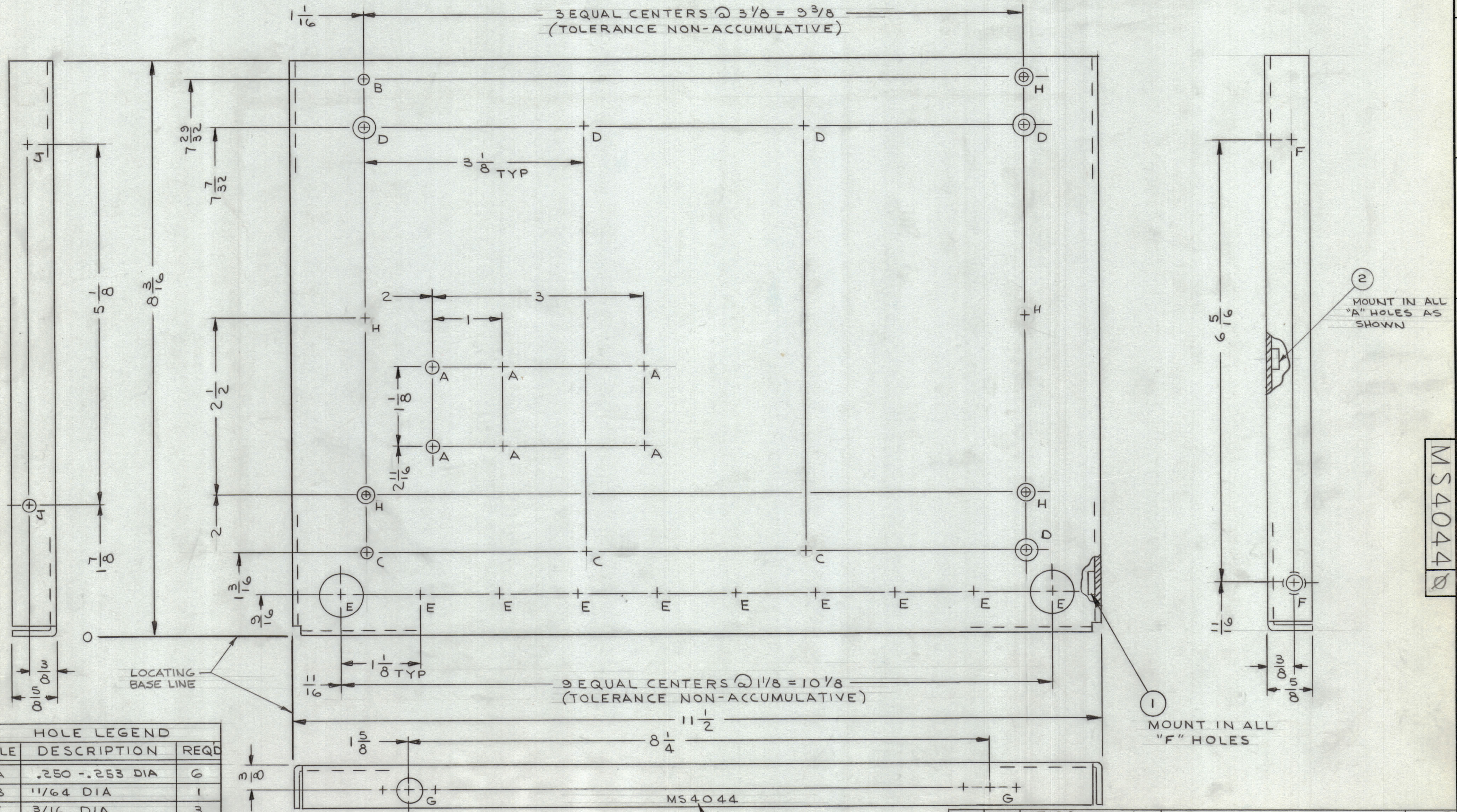
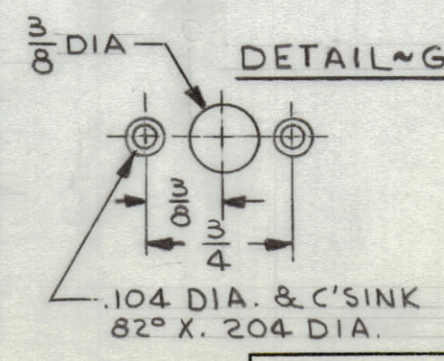


REVISIONS						
ZONE	SYM	DESCRIPTION	DATE	E.M.N. NO.	DRAFT	CHKD APPD
	X3	REDRAWN & REVISED	12/2/64	X3	JL	
	X4	(2) "I" HOLES WERE "A" HOLES; ITEM (2) ADDED	1/9/65	X4	J.M.	W.J.
		ORIGINAL RELEASE FOR PRODUCTION	12/65		J.M.	



HOLE LEGEND		
HOLE	DESCRIPTION	REQD
A	.250 -.253 DIA	6
B	11/64 DIA	1
C	3/16 DIA	3
D	.169 DIA & C'SINK 82° X .337 DIA	5
E	5/8 DIA	10
F	.221-.224 DIA	2
G	SEE DETAIL	2
H	.144 DIA & C'SINK 82° X .284 DIA	5
J	13/64 DIA	2



- UNLESS OTHERWISE SPECIFIED:
- USE MATERIAL THICKNESS FOR MAXIMUM RADIUS ON ALL BENDS
  - ALL ANGULAR BENDS 90 DEGREES
  - REMOVE ALL BURRS AND SHARP EDGES
  - MOUNT INSERTS AFTER FINISHING

NOTES

1	RTMU-1	A3909
Q'TY./UNIT	MODEL USED ON	ASS'Y. NO.
SCALE	CODE	
1:1	A	

THE CONTENTS OF THIS DRAWING ARE THE EXCLUSIVE PROPERTY OF THE TECHNICAL MATERIEL CORP. ITS UNAUTHORIZED USE OR REPRODUCTION IN WHOLE OR IN PART IS STRICTLY FORBIDDEN.

METAL STAMP TMC PART NO. 1/8 HIGH GOTHIC W/LATEST REV. LETTER.

REQ'D.	ITEM	PART NUMBER	DESCRIPTION	SYMBOL
6	2	NT129-1032-4	NUT, PLAIN, SPLINE	A
2	1	NT-129-832-4	NUT, PLAIN, SPLINE TYPE	F

F. E. EATON		LIST OF MATERIAL	
MATERIAL .081 THK ALUMINUM 5052-H32		THE TECHNICAL MATERIEL CORP. MAMARONECK, NEW YORK	
FINISH YELLOW IRIDITE PER S404		TITLE PLATE, SIDE-RIGHT	
UNLESS OTHERWISE SPECIFIED DIMENSIONS ARE IN INCHES AND INCLUDE CHEMICALLY APPLIED OR PLATED FINISHES		DRAWN J. LESHINSKI	
DECIMALS .X ± .05 .XX ± .01 .XXX ± .005		DATE 12/2/64	
FRACTIONS ± 1/64 ANGLES ± 0° 30'		CHECKED @	
TOLERANCES		DATE 1/18/65	
		ELECT. DES. W. JORDAN	
		MECH. DES. W. JORDAN	
		DATE 11/18/65	
		SHEET	
		REV. LTR.	

MS4044

2 MOUNT IN ALL "A" HOLES AS SHOWN

1 MOUNT IN ALL "F" HOLES