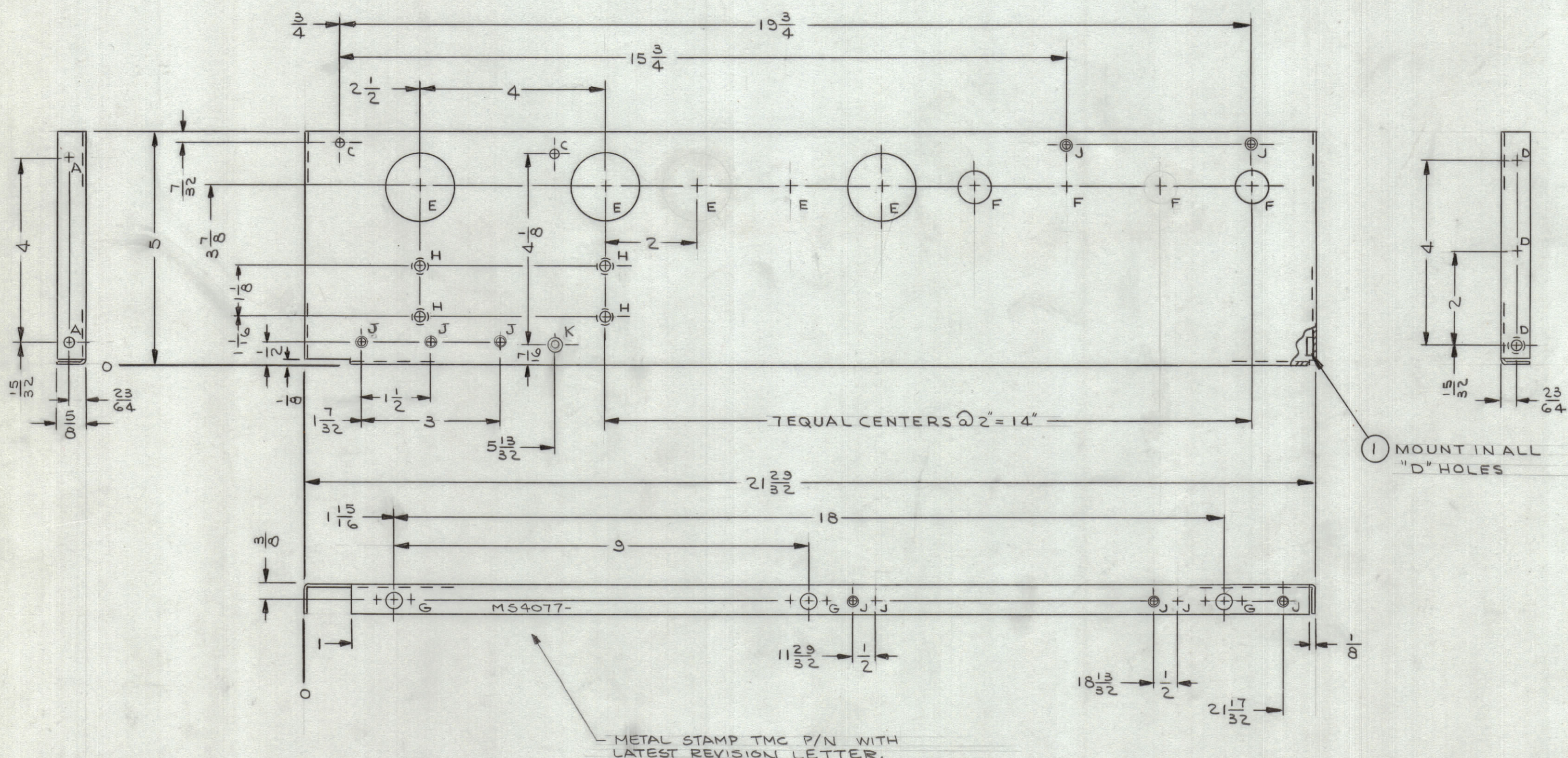
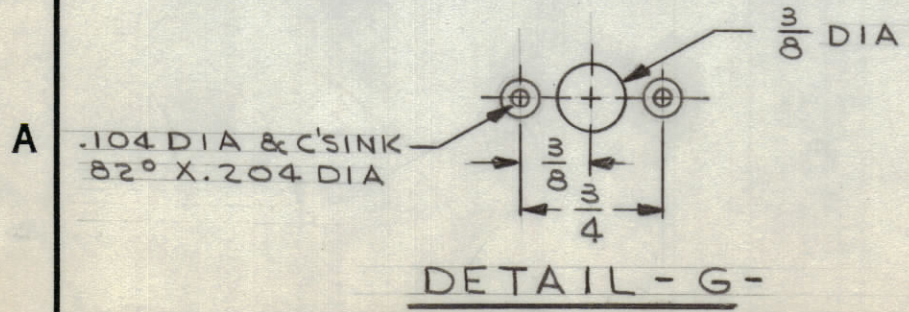


REVISIONS						
ZONE	SYM	DESCRIPTION	DATE	E.M.N. NO.	DRAFT	CHKD APPD
	X <sub>3</sub>	REDRAWN, NO CHANGES	1/14/65		JL	J.M.
	Ø	ORIGINAL RELEASE FOR PRODUCTION	2/2/65	Ø	H.A.	J.M.
	A	3" HOLES CHG TO 5" HOLES, 1" HOLE DEL. 1" HOLE ADDED	8-3/65	14585	E	J.B. J.C.C.



HOLE LEGEND		
HOLE	DESCRIPTION	REQ'D
A	13/64 DIA	2
B	DELETED	
C	3/16 DIA	2
D	.221-.224 DIA	3
E	1/2 DIA	5
F	3/4 DIA	4
G	SEE DETAIL	3
H	.196 DIA & C'SINK 82° X .390 DIA	4
J	.144 DIA & C'SINK 82° X .284 DIA	10
K	.109 DIA & C SINK 82° X .337 DIA	1



- UNLESS OTHERWISE SPECIFIED:
1. USE MATERIAL THICKNESS FOR MAXIMUM RADIUS ON ALL BENDS
  2. ALL ANGULAR BENDS 90 DEGREES
  3. REMOVE ALL BURRS AND SHARP EDGES
  4. MOUNT INSERTS AFTER FINISHING

NOTES

1	RTIA-1	A 4059
Q'TY./UNIT	MODEL USED ON	ASS'Y. NO.
SCALE	CODE	
1:2	A	

THE CONTENTS OF THIS DRAWING ARE THE EXCLUSIVE PROPERTY OF THE TECHNICAL MATERIEL CORP. ITS UNAUTHORIZED USE OR REPRODUCTION IN WHOLE OR IN PART IS STRICTLY FORBIDDEN.

REQ'D.	ITEM	PART NUMBER	DESCRIPTION	SYMBOL
3	1	NT 129-832-4	NUT, PLN., SPLINE	D

F.E. EATON LIST OF MATERIAL

MATERIAL	.081THK ALUMINUM 5052-H32	THE TECHNICAL MATERIEL CORP. MAMARONECK, NEW YORK
FINISH	YELLOW IRIDITE PER S404	TITLE
		PLATE, SIDE-RIGHT

DRAWN	J. LESHINSKI	DATE	1/14/65	FINAL APPROVAL		DATE	
CHECKED	J.M.	DATE	2/19/65				
ELECT. DES.		DATE	2/18/65				
MECH. DES.	W. JORDAN	DATE	2/18/65				

MS 4077-A

MS4077A