

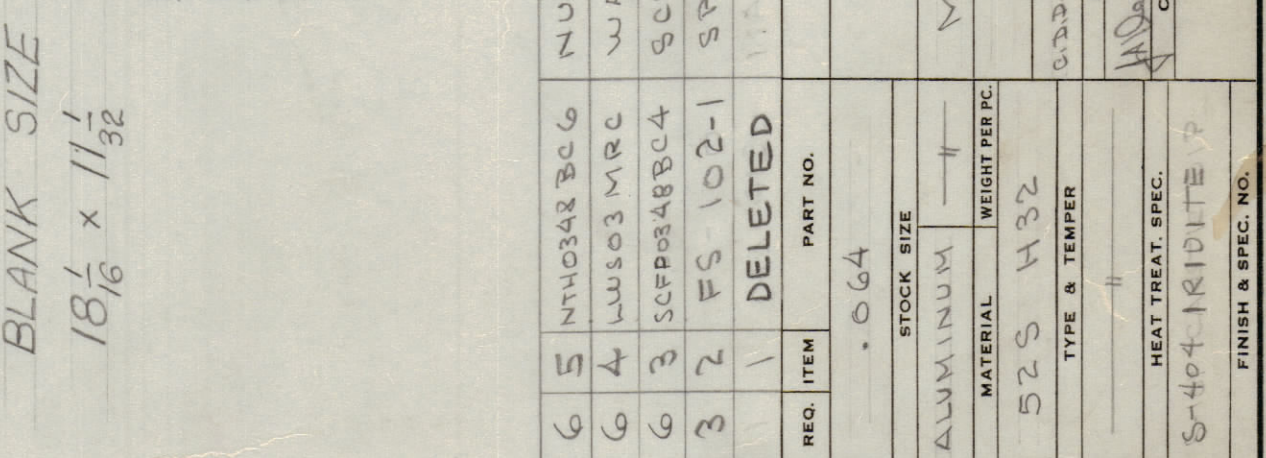
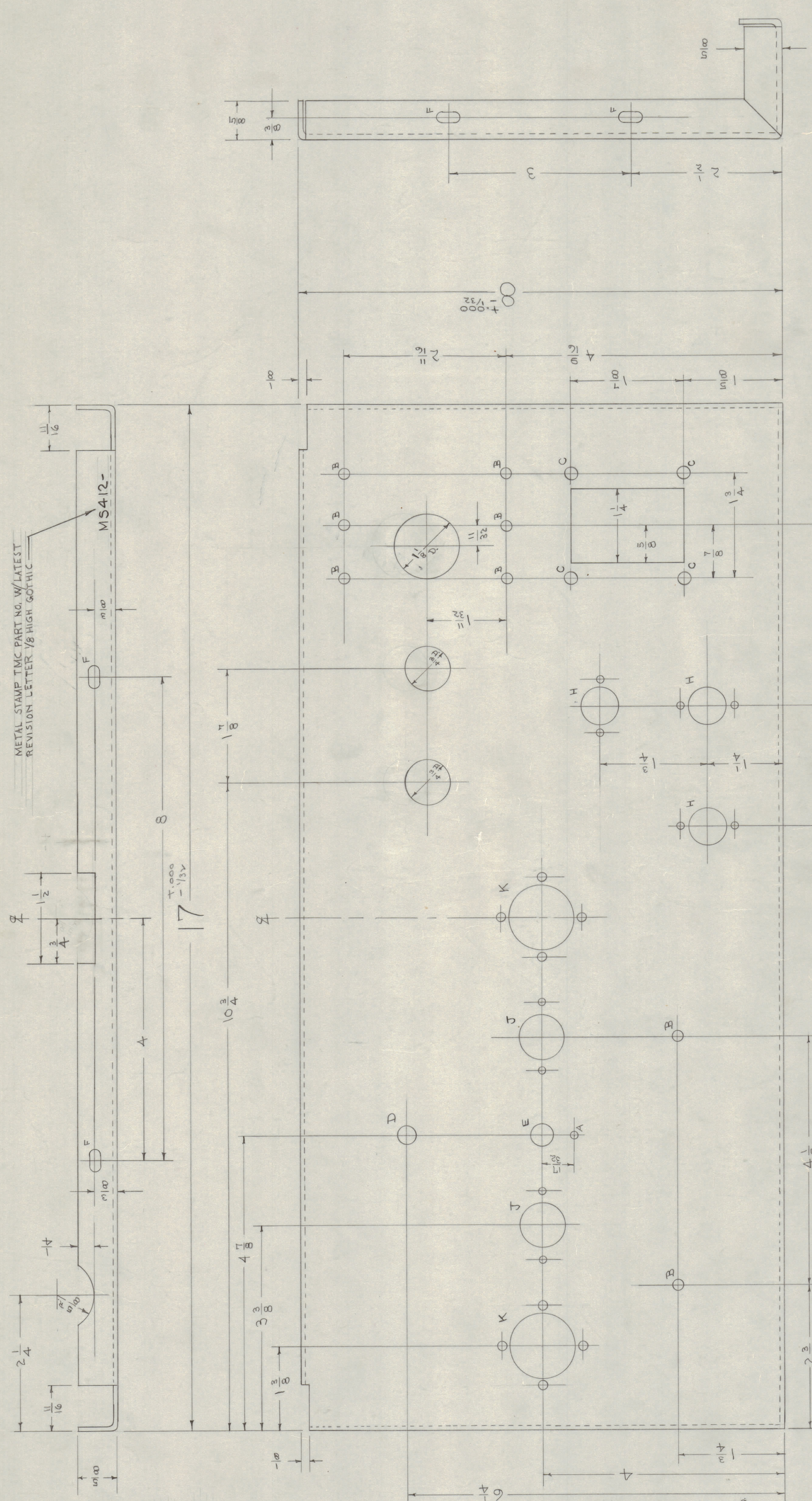
PROPERTY OF: THE TECHNICAL MATERIEL CORPORATION MAMARONECK, NEW YORK

NOTICE TO PERSONS RECEIVING THIS DRAWING
 THE TECHNICAL MATERIEL CORPORATION claims proprietary right in the material disclosed herein. This drawing is issued in confidence for engineering information only and may not be reproduced or used to manufacture any machine, part or process without the permission of THE TECHNICAL MATERIEL CORPORATION in writing. This permission is granted for mutual assistance and is subject to recall at any time.

THE TECHNICAL MATERIEL CORPORATION
 MAMARONECK, NEW YORK

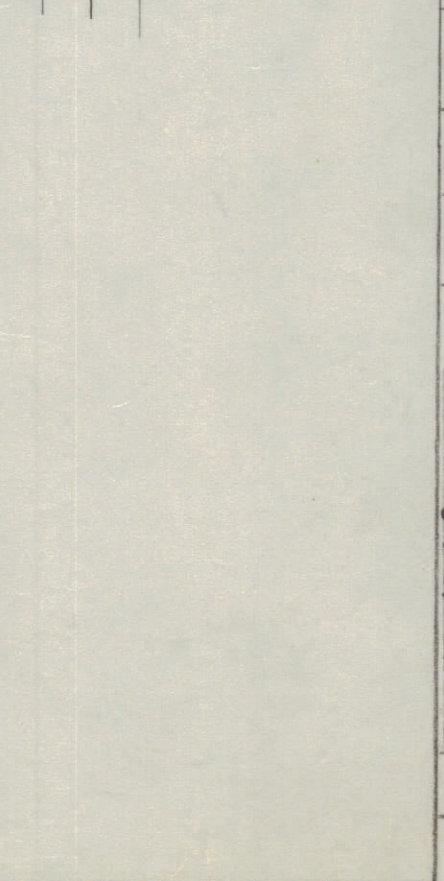
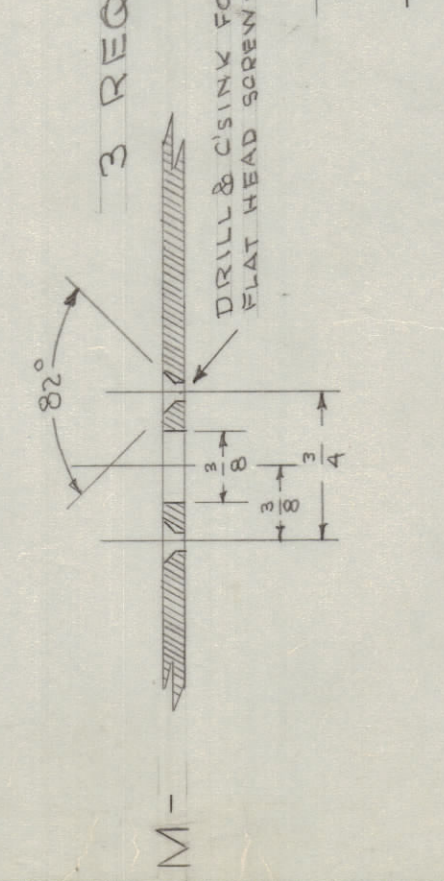
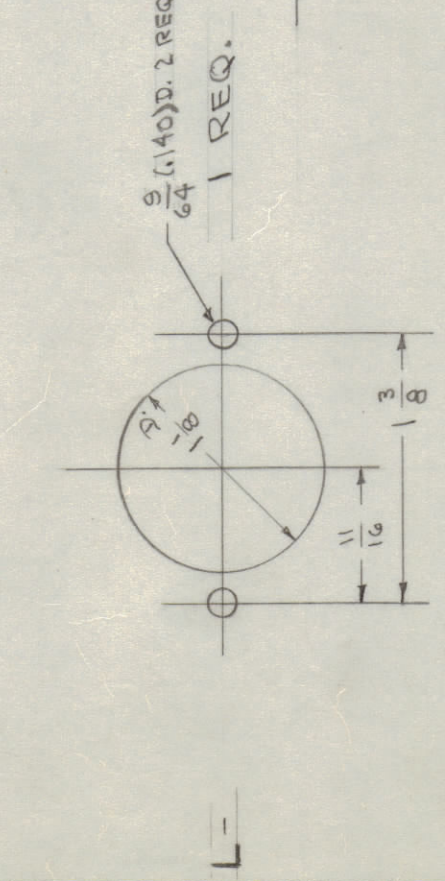
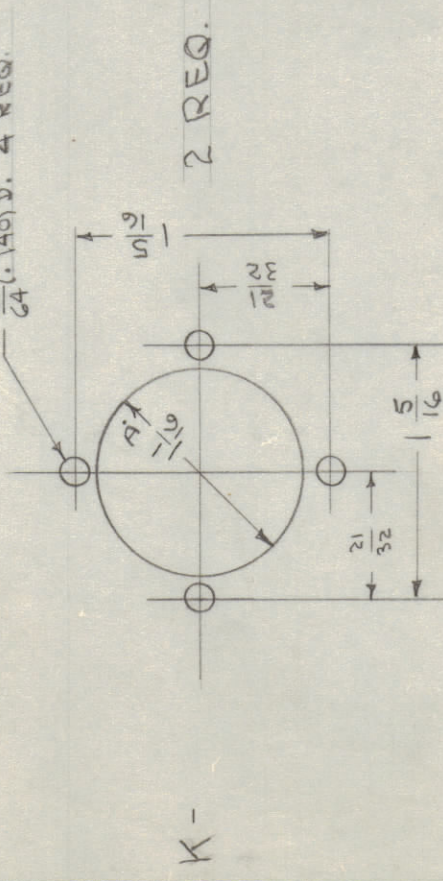
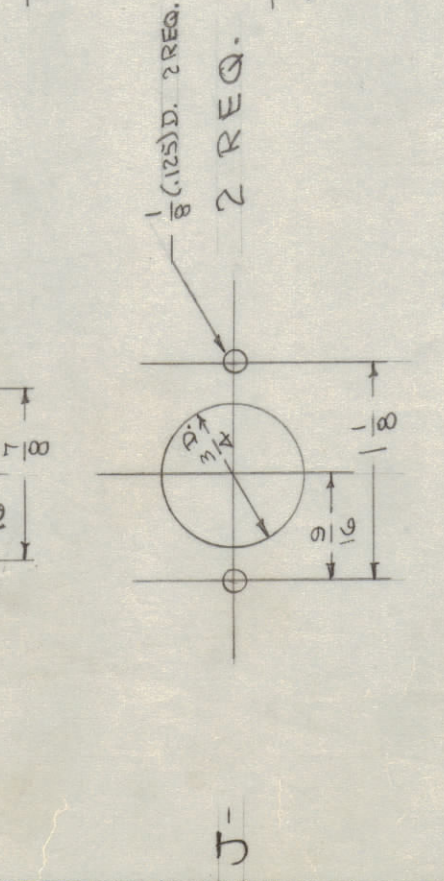
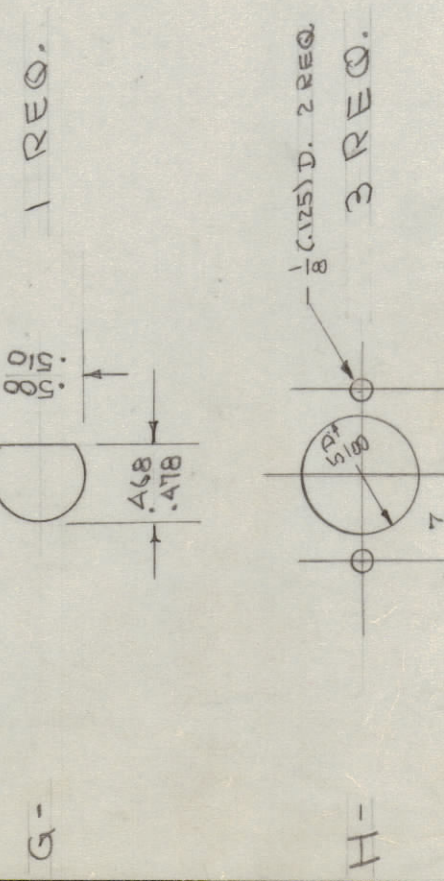
6	5	NH0348 BC6	NUTS HEX.
6	4	LW503 MRC	WASHER, LOCK
6	3	SCFP848BC4	SCREWS, MACHINE
3	2	FS 102-1	SPRING CLIP
1	1	DELETED	
REQ. ITEM	PART NO.		SYMBOL
*064			
STOCK SIZE			
ALUMINUM			
MATERIAL			
52S H32			
TYPE & TEMPER			
HEAT TREAT. SPEC.			
S-404-1R10ITE ?			
FINISH & SPEC. NO.			

THE TECHNICAL MATERIEL CORP.		NEW YORK	
MAMARONECK		NEW YORK	
MAIN CHASSIS ASSY.			
023-1021023	KZ	MECH. DES. APP.	WJZ
DRAWN		ELEC. DES. APP.	
HJD	H.J.J.	CHECKED	
PROJECT NO. 170		ASSEMBLY NO. A-817	DATE 9-16-54
MODEL RSM-2	USED ON	RES. PER UNIT	



IF IT IS FOUND DESIRABLE TO CHANGE ANY TOLERANCE OR OTHER DETAIL SPECIFIED ON THIS DRAWING NOTIFY THE DESIGNER IMMEDIATELY BY RETURNING THE DRAWING WITH PROPOSAL FOR CHANGE TO THE DESIGNER'S OFFICE.
 UNLESS SPECIFICALLY NOTED OTHERWISE, THE TOLERANCES SPECIFIED ON THIS DRAWING SHALL BE AS FOLLOWS:

- A - 9/64 (.140) D. 9 HOLES REQ.
- B - 1/64 (.015) D. 9 "
- C - 3/64 (.0468) D. 4 "
- D - 5/16 (.312) D. 1 "
- E - 5/8 (.625) D. 1 "
- F - 1/64 (.015) D. 10 SLOTS "



ISSUE ITEM	CHANGED FROM	DATE	EN. NO.	CHECKER	ENG. APP.
1	2" HEIGHT DIM. ADDED	9/14/54			
2					
3					
4					
5					