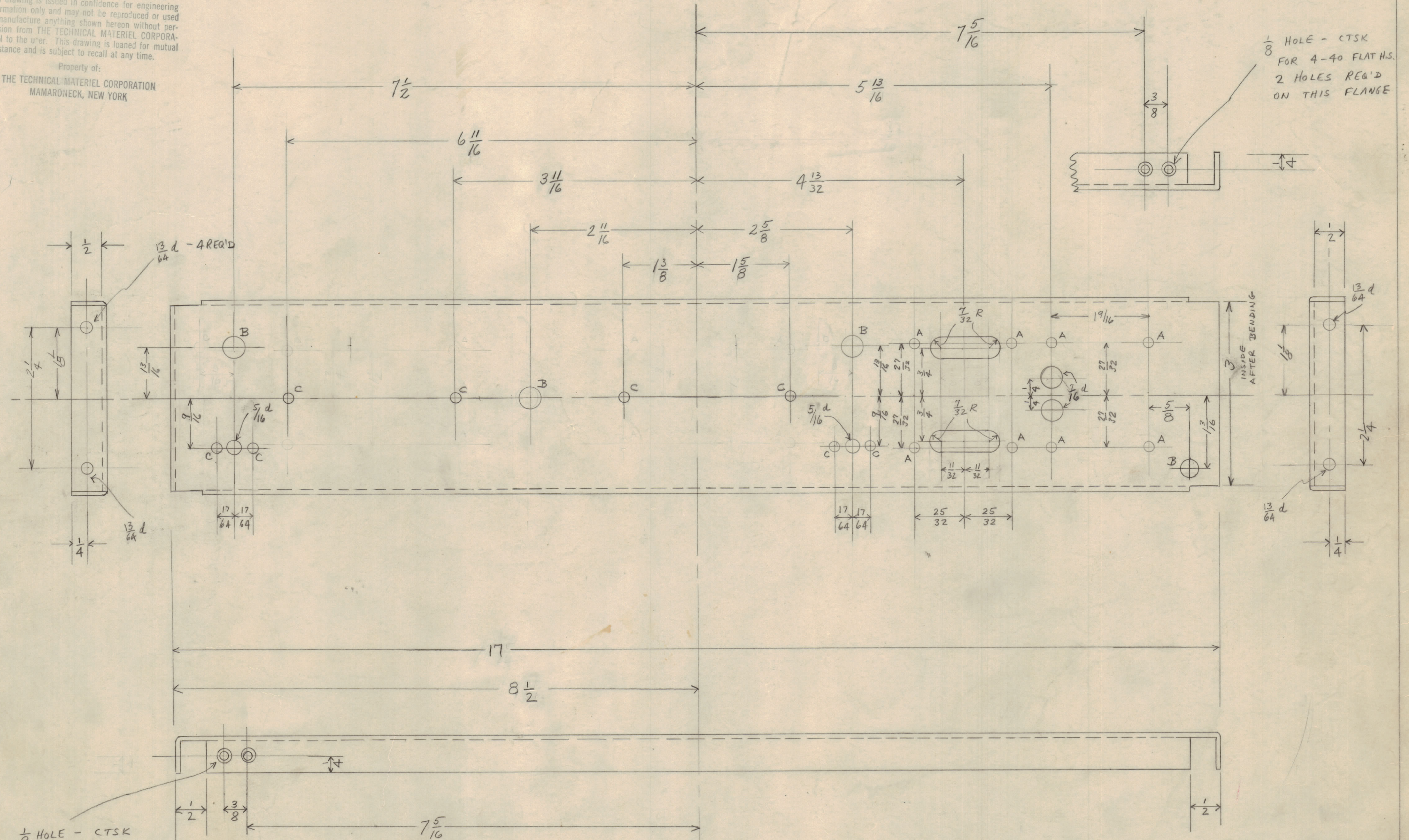


NOTICE TO PERSONS RECEIVING THIS DRAWING
 THE TECHNICAL MATERIEL CORPORATION claims proprietary right in the material disclosed hereon. This drawing is issued in confidence for engineering information only and may not be reproduced or used to manufacture anything shown hereon without permission from THE TECHNICAL MATERIEL CORPORATION to the user. This drawing is loaned for mutual assistance and is subject to recall at any time.

Property of:
 THE TECHNICAL MATERIEL CORPORATION
 MAMARONECK, NEW YORK



A = $\frac{1}{64}$ PUNCH - 8 REQ'D
 B = $\frac{3}{8} d$ 4 REQ'D
 C = $\frac{9}{64}$ PUNCH 8 REQ'D

ONE PER UNIT
 USE: 16 GA $\frac{1}{4}$ HARD ALUM
 FINISH: ALKALI ETCH & LACQUER
 MAT SIZE 4" X 17 $\frac{15}{16}$

CENTER DECK TONE TERMINAL TRANSMIT TKM-TC	
THE TECHNICAL MATERIEL CORPORATION MAMARONECK, NEW YORK	
DATE: JAN 19, 1951	CHKD. R.B.
DRAWN: P.B.	APPD. <i>fm</i>
SHEET. OF	NO. MS-420
WAS CMS018 1/27/54	